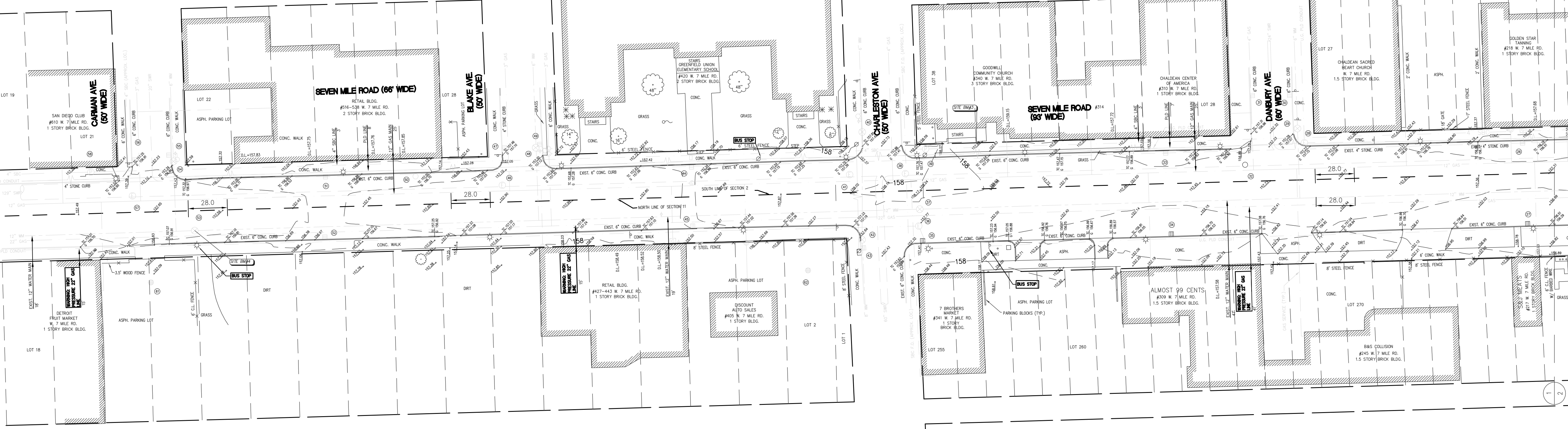
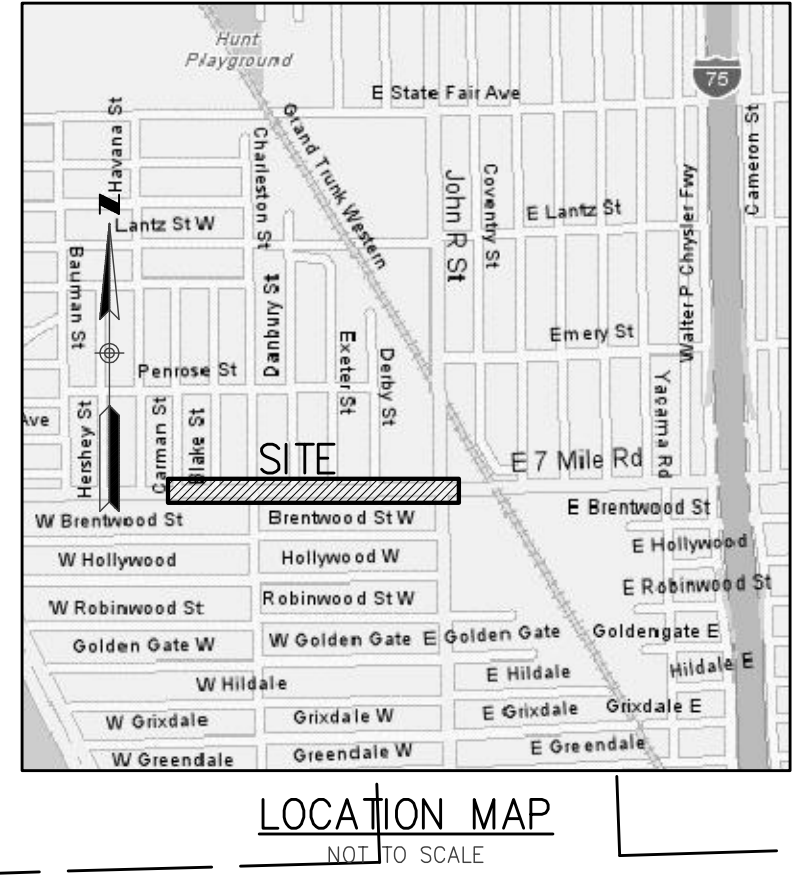


### LEGEND

- GAS
- SANITARY SEWER (SAN)
- STORM SEWER (STM)
- WATERMAIN (WM)
- OVERHEAD WIRE
- UNDERGROUND ELECTRIC (ELEC.)
- UNDERGROUND PHONE (PH)
- UNDERGROUND CABLE (CBL)
- MANHOLE
- CATCH BASIN
- SEWER CLEAN OUT
- GAS METER
- GAS SHUT OFF VALVE
- VALVE BOX
- GATE VALVE & WELL
- WATER SHUT OFF VALVE
- FIRE HYDRANT
- SPRINKLER VALVE BOX
- LAWN SPRINKLER HEAD
- HAND HOLE
- ELECTRIC RISER OR METER
- TELEPHONE RISER
- AIR CONDITION UNIT
- CABLE TV RISER
- UTILITY POLE
- UTILITY POLE WITH TRANSFORMER
- UTILITY POLE W/ LAMP EXTENSION (ARROW INDICATES DIRECTION OF ARM)
- LIGHT POLE
- LIGHT POLE WITH LAMP EXTENSION
- TRAFFIC SIGNAL
- POLE WITH TRAFFIC SIGNAL (OVER ROAD)
- CUY WIRE
- GROUND LEVEL OR DECORATIVE LIGHTING
- FLAG POLE
- PHONE OR PHONE BOOTH
- CHAIN LINK FENCE (CL.)
- WOOD FENCE
- WOODEN WIRE FENCE (W.W.)
- GUARD RAIL
- METAL OR CONC. POST
- METAL BOX
- SIGN
- WATER FOUNTAIN
- PARKING METER
- BILLBOARD OR LARGE SIGN
- BASKETBALL HOOP
- BOULDER
- STATUE OR SCULPTURE
- BENCH
- INV. INVERT ELEVATION
- CMP CORRUGATED METAL PIPE
- CULVERT
- DITCH BANK/TOP OF SLOPE
- PROPERTY LINES
- STUMP
- CONIFEROUS TREE
- DECIDUOUS TREE
- DECIDUOUS SHRUB
- CONIFEROUS SHRUB
- SECTION CORNER
- TRAVERSE POINT
- STRUCTURE NUMBER
- SDA POINT No.
- SPOT ELEVATION
- TC TOP OF CURB ELEVATION
- G GUTTER ELEVATION
- TP TOP OF PAVEMENT ELEVATION
- EM EDGE OF METAL ELEVATION
- TW TOP OF WALK ELEVATION
- OR GROUND ELEVATION
- U.G. UNDERGROUND
- F.O. FIBER OPTIC
- CONC. CONCRETE
- ASPH. ASPHALT
- L.S. LANDSCAPED
- F.F. FINISH FLOOR ELEVATION
- D.L. DOOR LEDGE ELEVATION
- F.I. FOUND IRON
- F.M. FOUND MONUMENT
- F.P.K. FOUND P.K. NAIL
- S.I. SET IRON W/SDA CAP
- S.P.K. SET P.K. NAIL
- S.P.K./TAG SET P.K. NAIL W/SDA TAG
- MAG SET MAGNETIC NAIL
- MAG/TAG SET MAGNETIC NAIL W/SDA TAG
- M RECORDED
- R RECORD
- C CALCULATED



### BENCHMARK DESCRIPTIONS

<b>MASTER BM#37-255</b>	TOP OF DISC IN HAND HOLE FOR CITY OF DETROIT CONTROL LOCATED AT THE NORTHEAST CORNER OF 7 MILE RD. AND JOHN R. ST.	ELEV.=157.03
<b>SOURCE:</b>	CITY OF DETROIT	
<b>SITE BM#1</b>	SET MAG NAIL IN NORTH FACE OF A LIGHT POLE LOCATED AT THE SOUTHWEST CORNER OF JOHN R. ST. AND BRENTWOOD AVE.	ELEV.=157.83
<b>SITE BM#2</b>	CHISELED "X" IN THE SOUTHWEST CORNER OF A CATCH BASIN RIM LOCATED IN FRONT OF THE WEST ENTRANCE DRIVE TO THE COMMUNITY HEALTH CENTER PARKING LOT. (SDA MH# 22)	ELEV.=156.30
<b>SITE BM#3</b>	SCRIBED "X" IN THE SOUTHWEST CORNER OF THE LOWER CONCRETE STEP OF THE EAST STAIRWAY TO THE GOODWILL COMMUNITY CHAPEL LOCATED AT THE NORTHEAST CORNER OF 7 MILE RD. AND CHARLESTON AVE.	ELEV.=158.82
<b>SITE BM#4</b>	CHISELED "X" IN THE SOUTH RIM OF A GATE VALVE AND WELL MANHOLE LOCATED IN THE MIDDLE OF THE EAST LANE OF 7 MILE RD. 150' EAST OF THE CENTERLINE OF CARMAN AVE. (SDA MH# 53)	ELEV.=157.30
<b>SITE BM#5</b>	ARROW ON HYDRANT LOCATED AT THE SOUTH SIDE OF BRENTWOOD AVE. AND IN FRONT OF HOUSE #71 AND #73.	ELEV.=161.84

### EXISTING STRUCTURE TABLE

1 GATE VALVE & WELL RIM=156.81	16 SQUARE CATCH BASIN RIM=156.89 NO PIPES VISIBLE - FILLED W/ WATER TOP/WATER @ 153.04 BOTTOM/STRUCTURE @ 151.54	29 GATE VALVE & WELL RIM=157.43	42 GATE VALVE & WELL RIM=157.25	54 GATE VALVE & WELL RIM=157.33	68 GATE VALVE & WELL RIM=157.02
2 SQUARE CATCH BASIN RIM=156.55	17 PUBLIC LIGHTING MANHOLE RIM=157.24	30 SQUARE CATCH BASIN RIM=156.74 NO PIPES VISIBLE - FILLED W/ WATER TOP/WATER @ 153.14 BOTTOM/STRUCTURE @ 150.84	43 SQUARE CATCH BASIN RIM=157.02 NO PIPES VISIBLE - FILLED W/ WATER TOP/WATER @ 153.62 BOTTOM/STRUCTURE @ 152.42	55 SQUARE CATCH BASIN RIM=156.73	69 GATE VALVE & WELL RIM=156.60
3 PUBLIC LIGHTING MANHOLE RIM=156.61	18 SQUARE CATCH BASIN RIM=156.72 NO PIPES VISIBLE - FILLED W/ WATER TOP/WATER @ 153.12 BOTTOM/STRUCTURE @ 150.72	31 SQUARE CATCH BASIN RIM=156.72 NO PIPES VISIBLE - FILLED W/ WATER TOP/WATER @ 152.86 BOTTOM/STRUCTURE @ 151.66	44 SQUARE CATCH BASIN RIM=156.76 NO PIPES VISIBLE - FILLED W/ WATER TOP/WATER @ 153.16 BOTTOM/STRUCTURE @ 151.96	56 SQUARE CATCH BASIN RIM=156.77 NO PIPES VISIBLE - FILLED W/ DIRT TOP/DIRT @ 153.47	70 SEWER MANHOLE
4 GATE VALVE & WELL RIM=156.53	19 GATE VALVE & WELL RIM=157.51	32 MANHOLE RIM=157.35	45 SQUARE CATCH BASIN RIM=156.76 NO PIPES VISIBLE - FILLED W/ WATER TOP/WATER @ 153.16 BOTTOM/STRUCTURE @ 151.96	57 PUBLIC LIGHTING MANHOLE RIM=157.36	71 SEWER MANHOLE
5 PHONE MANHOLE RIM=157.36	20 SEWER MANHOLE RIM=156.64	33 SQUARE CATCH BASIN RIM=156.66 NO PIPES VISIBLE - FILLED W/ WATER TOP/WATER @ 152.66 BOTTOM/STRUCTURE @ 151.51	46 PUBLIC LIGHTING MANHOLE RIM=157.57	58 PHONE MANHOLE RIM=157.30	72 SQUARE CATCH BASIN RIM=156.27
6 MANHOLE RIM=157.27	21 SQUARE CATCH BASIN RIM=156.23 NO PIPES VISIBLE - FILLED W/ WATER TOP/WATER @ 152.60 BOTTOM/STRUCTURE @ 151.43	34 SQUARE CATCH BASIN RIM=156.42 NO PIPES VISIBLE - FILLED W/ WATER TOP/WATER @ 153.17 BOTTOM/STRUCTURE @ 149.72	47 SQUARE CATCH BASIN RIM=157.08 NO PIPES VISIBLE - FILLED W/ DIRT TOP/DIRT @ 154.83	59 GATE VALVE & WELL RIM=157.38	
7 GATE VALVE & WELL RIM=157.29	22 SQUARE CATCH BASIN RIM=156.30 NO PIPES VISIBLE - FILLED W/ WATER TOP/WATER @ 152.95 BOTTOM/STRUCTURE @ 150.35	35 SQUARE CATCH BASIN RIM=156.55 NO PIPES VISIBLE - FILLED W/ DIRT TOP/DIRT @ 156.55	48 GATE VALVE & WELL RIM=157.24	60 ROUND CATCH BASIN RIM=157.00 NO PIPES VISIBLE - FILLED W/ WATER TOP/WATER @ 154.25 BOTTOM/STRUCTURE @ 153.15	
8 PHONE MANHOLE RIM=157.59	23 PHONE MANHOLE RIM=157.24	36 PUBLIC LIGHTING MANHOLE RIM=157.63	49 SQUARE CATCH BASIN RIM=157.15 NO PIPES VISIBLE - FILLED W/ DIRT TOP/DIRT @ 152.90	61 ROUND CATCH BASIN RIM=157.15	
9 GATE VALVE & WELL RIM=157.91	24 GATE VALVE & WELL RIM=157.35	37 GATE VALVE & WELL RIM=157.99	50 SQUARE CATCH BASIN RIM=156.73 NO PIPES VISIBLE - FILLED W/ DIRT TOP/DIRT @ 155.23	62 ROUND CATCH BASIN RIM=157.74	
10 SEWER MANHOLE RIM=158.99	25 PUBLIC LIGHTING MANHOLE RIM=157.38	38 PUBLIC LIGHTING MANHOLE RIM=157.94	51 SQUARE CATCH BASIN RIM=156.30 NO PIPES VISIBLE - FILLED W/ WATER TOP/WATER @ 152.70 BOTTOM/STRUCTURE @ 150.50	63 PUBLIC LIGHTING MANHOLE RIM=157.09	
11 PUBLIC LIGHTING MANHOLE RIM=158.46	26 SQUARE CATCH BASIN RIM=156.51 NO PIPES VISIBLE - FILLED W/ WATER TOP/WATER @ 152.56 BOTTOM/STRUCTURE @ 151.51	39 PHONE MANHOLE RIM=157.95	52 SQUARE CATCH BASIN RIM=156.53 NO PIPES VISIBLE - FILLED W/ WATER TOP/WATER @ 153.57 BOTTOM/STRUCTURE @ 151.25	64 ROUND CATCH BASIN RIM=159.22	
12 PUBLIC LIGHTING MANHOLE RIM=158.46	27 SQUARE CATCH BASIN RIM=156.20 NO PIPES VISIBLE - FILLED W/ WATER TOP/WATER @ 152.85 BOTTOM/STRUCTURE @ 151.15	40 GATE VALVE & WELL RIM=157.43	53 GATE VALVE & WELL RIM=157.32	65 ROUND CATCH BASIN RIM=157.34	
13 PUBLIC LIGHTING MANHOLE RIM=157.99	28 PUBLIC LIGHTING MANHOLE RIM=157.34	41 PUBLIC LIGHTING MANHOLE RIM=157.75		66 PUBLIC LIGHTING MANHOLE RIM=159.42	
14 SQUARE CATCH BASIN RIM=157.04 NO PIPES VISIBLE - FILLED W/ WATER TOP/WATER @ 153.19 BOTTOM/STRUCTURE @ 151.49				67 PUBLIC LIGHTING MANHOLE RIM=157.37	

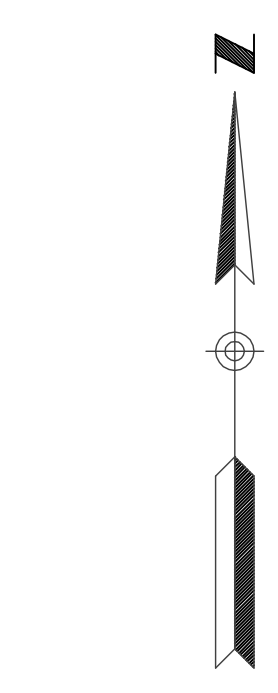
### UTILITY PROVIDERS

DETROIT EDISON	: HELEN LEE	(313) 235-6597
MICHCON (DTE)	: DRAFTING CLERK	(313) 577-7236
SBC	: JEFF COLLARD	(586) 466-1024
COMCAST CABLE	: DIANE S. BARNES	(313) 934-2600
DET. PUBLIC LIGHTING	: ANDREW CRAWFORD	(313) 267-7220
WATER/SEWER/STORM (CITY OF DETROIT)	: Le SHAWN SAMUEL	(313) 964-9519

### SEWER NOTE

SDA HAS MADE A REASONABLE AND PRUDENT ATTEMPT TO IDENTIFY THE OUTLETS FOR STORM WATER DRAINAGE AND SANITARY SEWER. THE OUTLETS FOR THIS SITE MAY BE MASKED BY TRAPS IN THE STRUCTURES AND/OR BLIND TAPS DIRECTLY INTO THE TRUNK LINES.

THE SEWERS IN DETROIT ARE PART OF A COMBINED STORM/SANITARY SYSTEM. WHERE SDA HAS NOT BEEN ABLE TO PROPERLY DETERMINE WHETHER A PARTICULAR LINE IS "STORM" OR "SANITARY", WE HAVE LABELED THE UTILITY AS SEWER (SWR).



SCALE 1" = 40'



220 W. CONGRESS, SUITE 400  
DETROIT, MI 48226  
PHONE: (313) 967-4700  
FAX: (313) 967-4707

905 SOUTH BLVD. EAST  
ROCHESTER HILLS, MI 48307  
PHONE: (248) 844-5400  
FAX: (248) 844-5404

2505 W. JEFFERSON  
TRENTON, MI 48183  
PHONE: (734) 671-4344  
FAX: (734) 671-4347

www.spaldingdecker.com

**3 WORKING DAYS BEFORE YOU DIG CALL MISS DIG 1-800-482-7171**

For free location of public utility lines

NOTE: UTILITY INFORMATION ON THIS DRAWING MAY BE FROM INFORMATION DISCLOSED TO THIS FIRM BY THE VARIOUS UTILITY COMPANIES, CITY/COUNTY AGENCIES AND OTHER VARIOUS SOURCES. UNDERGROUND UTILITIES WHICH ARE ON PRIVATE PROPERTY ARE USUALLY NOT DELINEATED UPON A UTILITY COMPANY'S PUBLISHED PLANS. THEIR LOCATION, IF SHOWN UPON THIS SURVEY, ARE APPROXIMATED FROM FOUND PAINT MARKS/STAKES, ETC. AS LOCATED BY THIS FIRM FROM SOURCES WHICH ARE UNKNOWN. NO GUARANTEE IS GIVEN AS TO THE COMPLETENESS OR ACCURACY THEREOF.

PRIOR TO CONSTRUCTION, ALL LOCATIONS AND DEPTHS OF EXISTING UTILITIES (IN CONFLICT WITH PROPOSED IMPROVEMENTS) SHALL BE VERIFIED IN THE FIELD. CALL MISS DIG 3 WORKING DAYS PRIOR TO CONSTRUCTION.

COPYRIGHT © 2005 SPALDING DECKER ASSOCIATES, INC. THIS DRAWING AND THE SUBJECT WATER CONTAINED THEREIN IS PROPRIETARY AND IS NOT TO BE USED OR REPRODUCED WITHOUT WRITTEN PERMISSION OF SPALDING DECKER ASSOCIATES, INC.

### 7 MILE ROAD STREETSCAPE CARMEN TO JOHN R. DETROIT, MI

### TOPOGRAPHICAL SURVEY

SECTION 1, 2, 11, 12 PRIVATE CLAIM  
TOWN 1 SOUTH RANGE 11 EAST  
CITY OF DETROIT  
WAYNE COUNTY

NO.	DATE	REVISION
1.	11-18-05	ADDED UNDERGROUND PUBLIC LIGHTING UTILITIES

DRAWER T. JUDSON	DATE 10-20-05
CHECKED M. DeDECKER	DATE 10-20-05
FIELD LEADER R. KARYO	PROJECT SURVEYOR M. DeDECKER
PROJECT MANAGER M. DeDECKER	DEPARTMENT MANAGER G. PLATZ

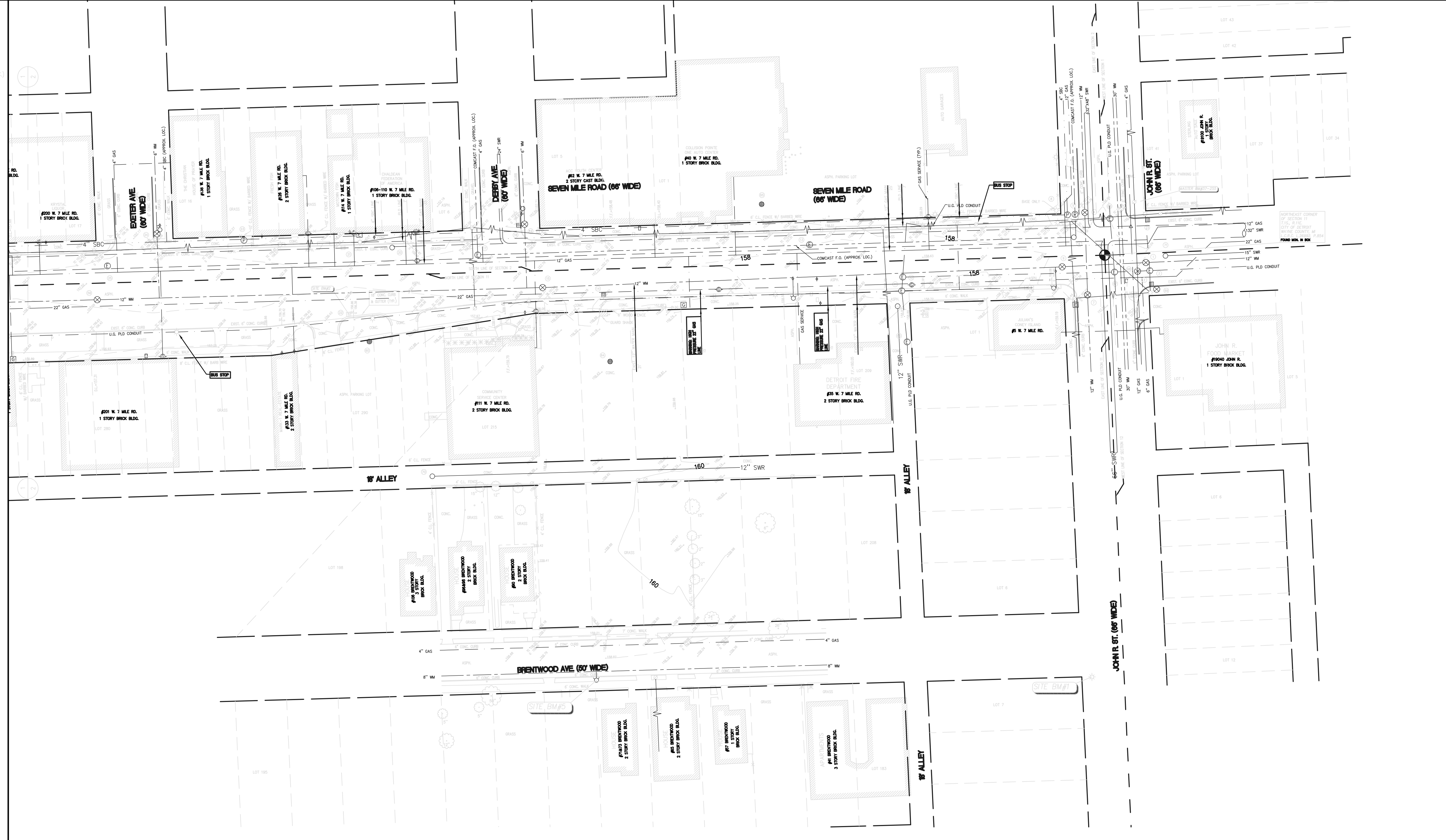
VERIFY SCALES

BAR IS ONE INCH ON ORIGINAL DRAWING IF NOT ONE INCH ON THIS SHEET, ADJUST SCALES ACCORDINGLY

JOB NO. UI05-007	DRAWING NO. UI05007TP
SCALE: 1" = 40'	SHEET NO. 1 OF 2

### LEGEND

- GAS
- SANITARY SEWER (SAN)
- STORM SEWER (STM)
- WATERMAIN (WM)
- OVERHEAD WIRE
- UNDERGROUND ELECTRIC (ELEC.)
- UNDERGROUND PHONE (PH)
- UNDERGROUND CABLE (CBL)
- MANHOLE
- CATCH BASIN
- SEWER CLEAN OUT
- GAS METER
- GAS SHUT OFF VALVE
- VALVE BOX
- GATE VALVE & WELL
- WATER SHUT OFF VALVE
- FIRE HYDRANT
- SPRINKLER VALVE BOX
- ALARM SPRINKLER HEAD
- HAND HOLE
- ELECTRIC RISER OR METER
- TELEPHONE RISER
- CABLE TV RISER
- AIR CONDITION UNIT
- UTILITY POLE
- UTILITY POLE WITH TRANSFORMER
- UTILITY POLE W/ LAMP EXTENSION (ARROW INDICATES DIRECTION OF ARM)
- LIGHT POLE
- LIGHT POLE WITH LAMP EXTENSION
- TRAFFIC SIGNAL
- POLE WITH TRAFFIC SIGNAL (OVER ROAD)
- 20' WIRE
- 30' POLE
- GROUND LEVEL OR DECORATIVE LIGHTING
- FLAG POLE
- PHONE OR PHONE BOOTH
- CHAIN LINK FENCE (CL)
- WOOD FENCE
- WOODEN WIRE FENCE (W.W)
- GUARD RAIL
- METAL OR CONC. POST
- MAILBOX
- SIGN
- WATER FOUNTAIN
- PARKING METER
- BILLBOARD OR LARGE SIGN
- BASKETBALL HOOP
- BOULDER
- STATUE OR SCULPTURE
- BENCH
- INVERT ELEVATION
- CORROGATED METAL PIPE
- CENTERLINE OF DITCH
- CULVERT
- DITCH BANK/TOP OF SLOPE
- PROPERTY LINES
- TREE
- CONIFEROUS TREE
- DECIDUOUS TREE
- DECIDUOUS SHRUB
- CONIFEROUS SHRUB
- SECTION CORNER
- TRAVERSE POINT
- STRUCTURE NUMBER
- SDA POINT No.
- SPOT ELEVATION
- TOP OF CURB ELEVATION
- GUTTER ELEVATION
- TOP OF PAVEMENT ELEVATION
- EDGE OF METAL ELEVATION
- TOP OF WALK ELEVATION
- TOP OF WALL ELEVATION
- GROUND ELEVATION
- U.G. UNDERGROUND
- F.O. FIBER OPTIC
- CONC. CONCRETE
- ASPH. ASPHALT
- L.S. LANDSCAPED
- F.F. FINISH FLOOR ELEVATION
- D.L. DOOR LEDGE ELEVATION
- F.I. FOUND IRON
- F.M. FOUND MONUMENT
- F.P.K. FOUND P.K. NAIL
- S.I. SET IRON W/SDA CAP
- S.P.K. SET P.K. NAIL
- S.P.K./TAG SET P.K. NAIL W/SDA TAG
- MAG. SET MAGNETIC NAIL
- MAG/TAG SET MAGNETIC NAIL W/SDA TAG
- W. MEASURED
- R. RECORD
- C. CALCULATED



### 7 MILE ROAD STREETScape CARMEN TO JOHN R. DETROIT, MI

TOPOGRAPHICAL SURVEY

SECTION 1, 2, 11, 12 PRIVATE CLAIM  
TOWN 1 SOUTH RANGE 11 EAST  
CITY OF DETROIT  
WAYNE COUNTY

NO.	DATE	REVISION
1	11-18-05	ADDED UNDERGROUND PUBLIC LIGHTING UTILITIES

DATE FOR T. JUDSON 10-20-05  
CHECKED M. DeDECKER DATE 10-20-05  
FIELD LEADER R. KARYO PROJECT SURVEYOR M. DeDECKER  
PROJECT MANAGER M. DeDECKER DEPARTMENT MANAGER G. PLATZ

**SURVEYOR'S STATEMENT**

WE HEREBY STATE THAT ALL INFORMATION SHOWN HEREON IS TRUE AND CORRECT TO THE BEST OF OUR KNOWLEDGE AND BELIEF AND IS FROM ACTUAL FIELD MEASUREMENTS UNLESS OTHERWISE NOTED.

**SURVEYOR'S COMMENTS**

- SPALDING D&D ASSOCIATES, INC. (SDA) HAS PERFORMED THIS TOPOGRAPHICAL SURVEY IN OCTOBER, 2005, FOR THE DESIGN OF STREETScape IMPROVEMENTS AND PAVEMENT UPGRADES ALONG SEVEN MILE ROAD AND A PROPOSED PARK BETWEEN SEVEN MILE AND BRENTWOOD. THE SCOPE OF SERVICES INCLUDED SHOWING UNDERGROUND UTILITIES BASED UPON A COMBINATION OF FIELD MEASUREMENTS AND RECORD INFORMATION. INVERT ELEVATIONS OF UTILITY PIPES WERE NOT MEASURED, WITH THE EXCEPTION OF CATCH BASINS. MOST OF THESE CATCH BASINS HOLD WATER, AND THEREFORE THE ACTUAL PIPES, IF ANY, ARE UNDERWATER AND WERE NOT ACCESSIBLE FOR MEASUREMENTS.
- WE WERE NOT FURNISHED WITH DEED INFORMATION AND THE LIMITS OF OWNERSHIP FOR THE PARK AREA BETWEEN SEVEN MILE AND BRENTWOOD ARE UNKNOWN. WE HAVE ACCURATELY DEPICTED THE UNDERLYING LOT LINES AND NUMBERS.

MICHAEL F. H. D&D  
PROFESSIONAL SURVEYOR No. 44282

SCALE 1" = 40'

JOB NO. UI05-007 DRAWING NO. UI05007TP  
SCALE: 1" = 40' SHEET NO. 2 OF 2



220 W. CONGRESS, SUITE 400  
DETROIT, MI 48226  
PHONE: (313) 967-4700  
FAX: (313) 967-4707

905 SOUTH BLVD. EAST  
ROCHESTER HILLS, MI 48307  
PHONE: (248) 844-5400  
FAX: (248) 844-5404

2505 W. JEFFERSON  
TRENTON, MI 48183  
PHONE: (734) 671-4344  
FAX: (734) 671-4347

www.spaldingd&d.com

**3 WORKING DAYS BEFORE YOU DIG CALL MISS DIG 1-800-482-7171**

For the location of public utility lines

NOTE: UTILITY INFORMATION ON THIS DRAWING MAY BE FROM INFORMATION DISCLOSED TO THIS FIRM BY THE VARIOUS UTILITY COMPANIES, CITY/COUNTY AGENCIES AND OTHER VARIOUS SOURCES. UNDERGROUND UTILITIES WHICH ARE ON PRIVATE PROPERTY ARE USUALLY NOT DELINEATED UPON A UTILITY COMPANY'S PUBLISHED PLANS. THEIR LOCATION, IF SHOWN UPON THIS SURVEY, ARE APPROXIMATED FROM FOUND PAINT MARKS/STAKES, ETC. AS LOCATED BY THIS FIRM FROM SOURCES WHICH ARE UNKNOWN. NO GUARANTEE IS GIVEN AS TO THE COMPLETENESS OR ACCURACY THEREOF.

PRIOR TO CONSTRUCTION, ALL LOCATIONS AND DEPTHS OF EXISTING UTILITIES IN CONFLICT WITH PROPOSED IMPROVEMENTS SHALL BE VERIFIED IN THE FIELD. CALL MISS DIG 3 WORKING DAYS PRIOR TO CONSTRUCTION.

COPYRIGHT © 2005 SPALDING D&D ASSOCIATES, INC. THIS DRAWING AND THE SUBJECT MATTER CONTAINED THEREON IS PROPRIETARY AND IS NOT TO BE USED OR REPRODUCED WITHOUT WRITTEN PERMISSION OF SPALDING D&D ASSOCIATES, INC.

**7 MILE ROAD STREETScape CARMEN TO JOHN R. DETROIT, MI**

**TOPOGRAPHICAL SURVEY**

NO.	DATE	REVISION
1	11-18-05	ADDED UNDERGROUND PUBLIC LIGHTING UTILITIES

DATE FOR T. JUDSON 10-20-05  
CHECKED M. DeDECKER DATE 10-20-05  
FIELD LEADER R. KARYO PROJECT SURVEYOR M. DeDECKER  
PROJECT MANAGER M. DeDECKER DEPARTMENT MANAGER G. PLATZ

**SURVEYOR'S STATEMENT**

WE HEREBY STATE THAT ALL INFORMATION SHOWN HEREON IS TRUE AND CORRECT TO THE BEST OF OUR KNOWLEDGE AND BELIEF AND IS FROM ACTUAL FIELD MEASUREMENTS UNLESS OTHERWISE NOTED.

**SURVEYOR'S COMMENTS**

- SPALDING D&D ASSOCIATES, INC. (SDA) HAS PERFORMED THIS TOPOGRAPHICAL SURVEY IN OCTOBER, 2005, FOR THE DESIGN OF STREETScape IMPROVEMENTS AND PAVEMENT UPGRADES ALONG SEVEN MILE ROAD AND A PROPOSED PARK BETWEEN SEVEN MILE AND BRENTWOOD. THE SCOPE OF SERVICES INCLUDED SHOWING UNDERGROUND UTILITIES BASED UPON A COMBINATION OF FIELD MEASUREMENTS AND RECORD INFORMATION. INVERT ELEVATIONS OF UTILITY PIPES WERE NOT MEASURED, WITH THE EXCEPTION OF CATCH BASINS. MOST OF THESE CATCH BASINS HOLD WATER, AND THEREFORE THE ACTUAL PIPES, IF ANY, ARE UNDERWATER AND WERE NOT ACCESSIBLE FOR MEASUREMENTS.
- WE WERE NOT FURNISHED WITH DEED INFORMATION AND THE LIMITS OF OWNERSHIP FOR THE PARK AREA BETWEEN SEVEN MILE AND BRENTWOOD ARE UNKNOWN. WE HAVE ACCURATELY DEPICTED THE UNDERLYING LOT LINES AND NUMBERS.

MICHAEL F. H. D&D  
PROFESSIONAL SURVEYOR No. 44282

SCALE 1" = 40'

JOB NO. UI05-007 DRAWING NO. UI05007TP  
SCALE: 1" = 40' SHEET NO. 2 OF 2