

CITY OF DETROIT TOPOGRAPHIC SURVEY

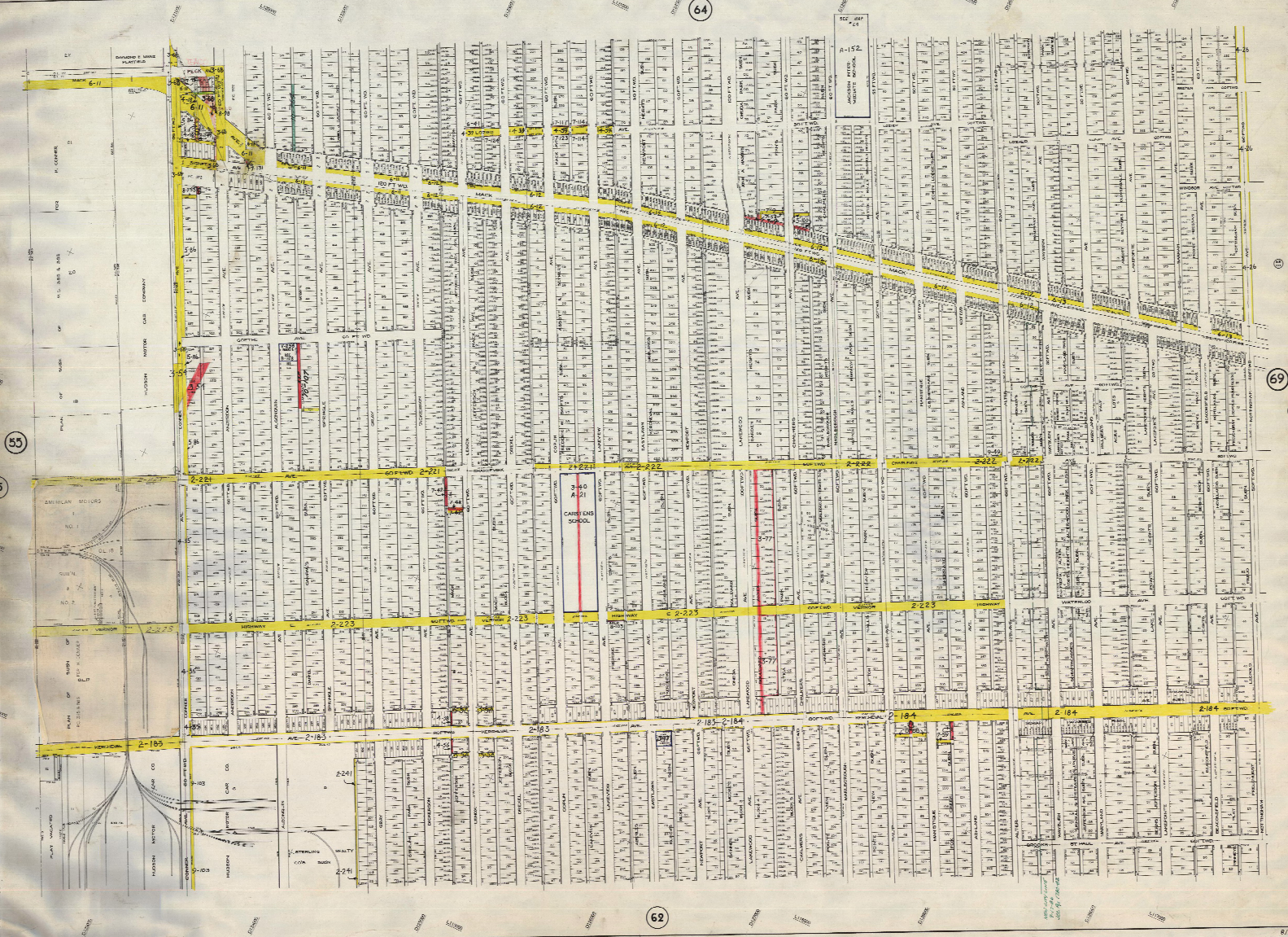
DETAIL MAP SHEET

SCALE: 1 INCH = 200 FEET

CARL D. WARNER, COMMISSIONER OF PUBLIC WORKS
GEORGE R. THOMPSON, CITY ENGINEER

64

A-152



55

55

69

69

62