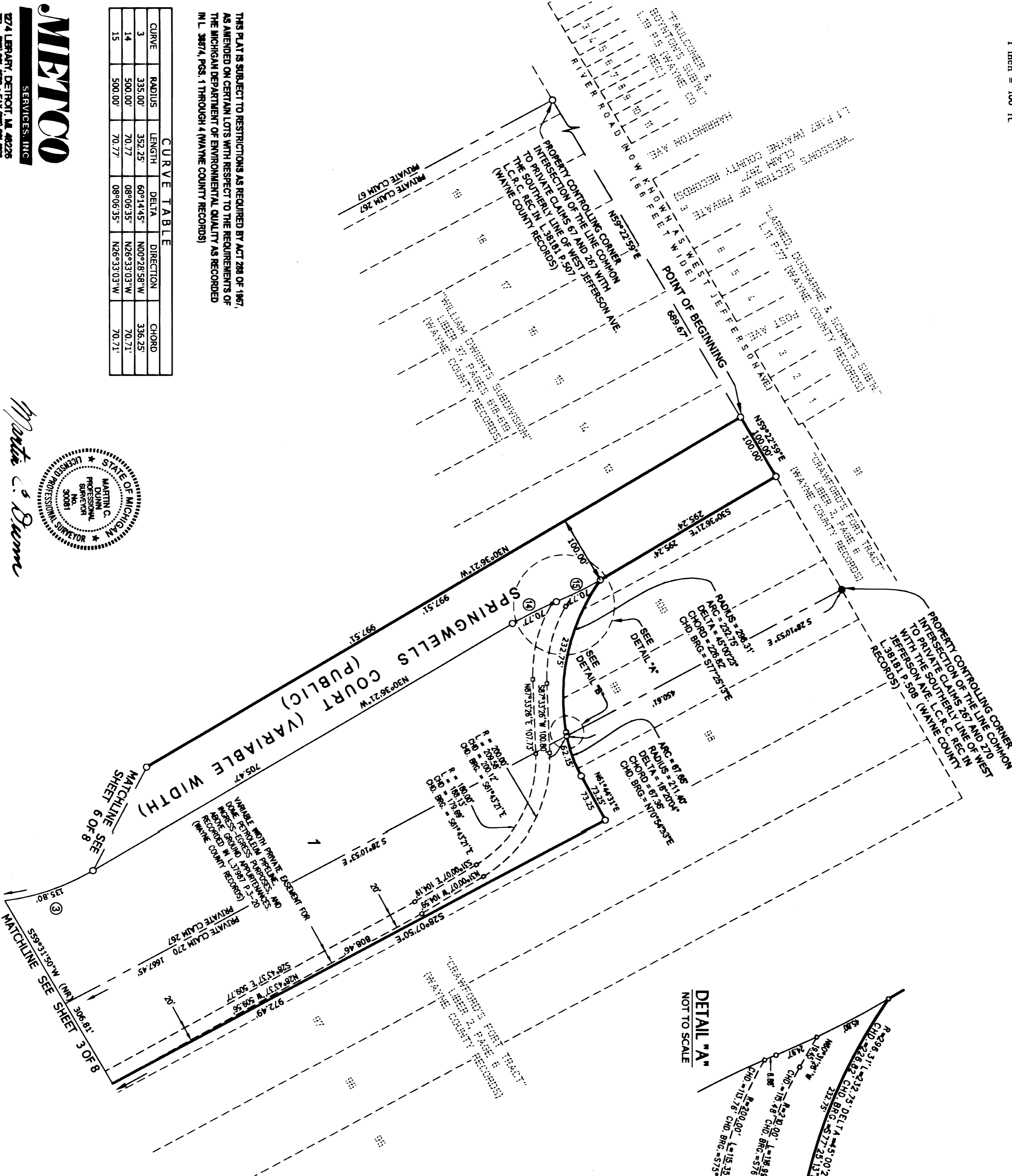
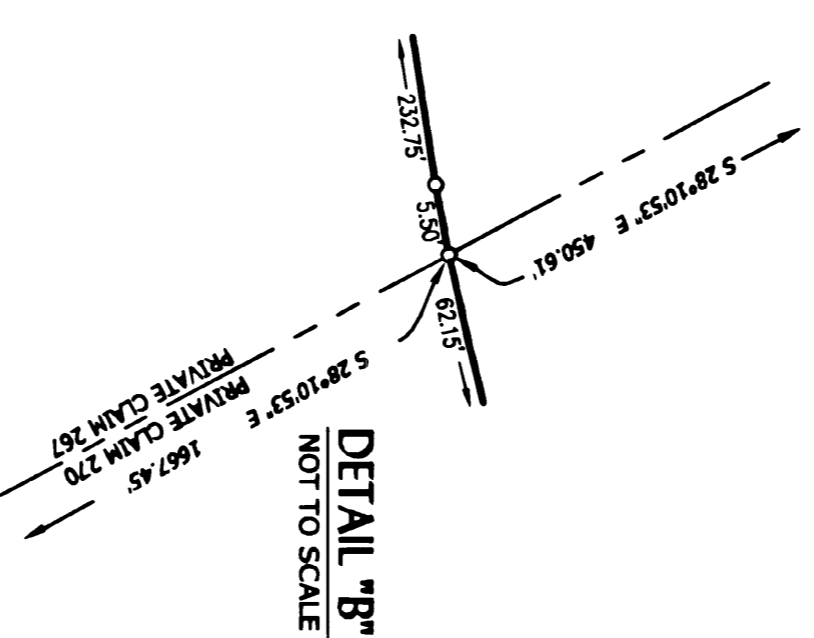
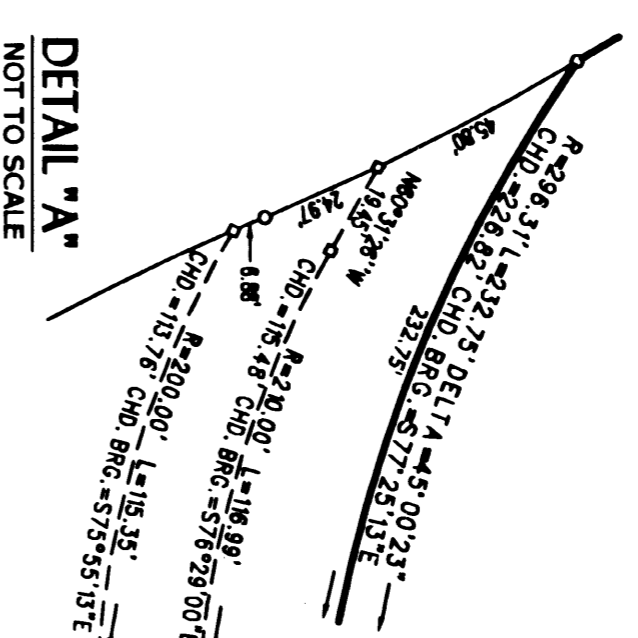
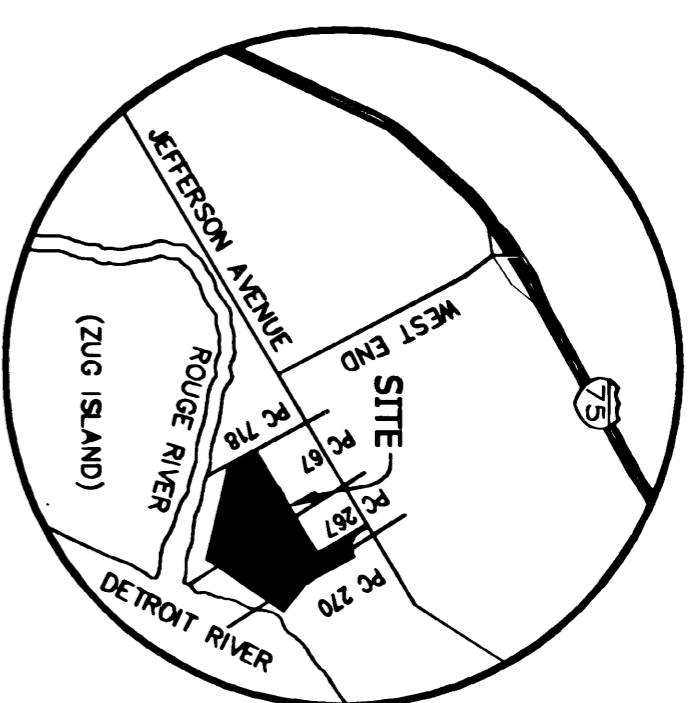


"AMENDED PLAT OF THE VACATED PORTIONS OF LOTS 13 TO 19 INCLUSIVE, OF WILLIAM DWIGHTS SUBDIVISION OF THE FRONTS OF PRIVATE CLAIMS 267, 270 AND 268" AND THE VACATED PORTIONS OF LOTS 95 TO 101, INCLUSIVE, OF CRAWFORD'S FORT TRACT, BEING PRIVATE CLAIM 270, THE EAST PART OF PRIVATE CLAIM 267, AND THE WEST PART OF PRIVATE CLAIM NO. 268, AND PARTS OF PRIVATE CLAIMS 67 AND 267"

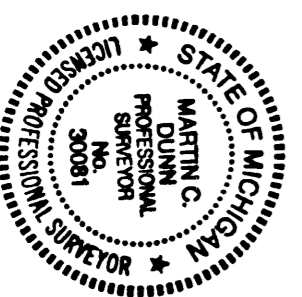
LOCATION MAP  
NOT TO SCALE



THIS PLAT IS SUBJECT TO RESTRICTIONS AS REQUIRED BY ACT 288 OF 1967, AS AMENDED ON CERTAIN LOTS WITH RESPECT TO THE REQUIREMENTS OF THE MICHIGAN DEPARTMENT OF ENVIRONMENTAL QUALITY AS RECORDED IN L. 3874, PGS. 1 THROUGH 4 (WAYNE COUNTY RECORDS)

CURVE TABLE

CURVE	RADIUS	LENGTH	DELTA	DIRECTION	CHORD
3	335.00'	352.25'	60°14'45"	N00°28'58"W	336.25'
14	500.00'	70.77'	08°06'35"	N26°33'03"W	70.71'
15	500.00'	70.77'	08°06'35"	N26°33'03"W	70.71'

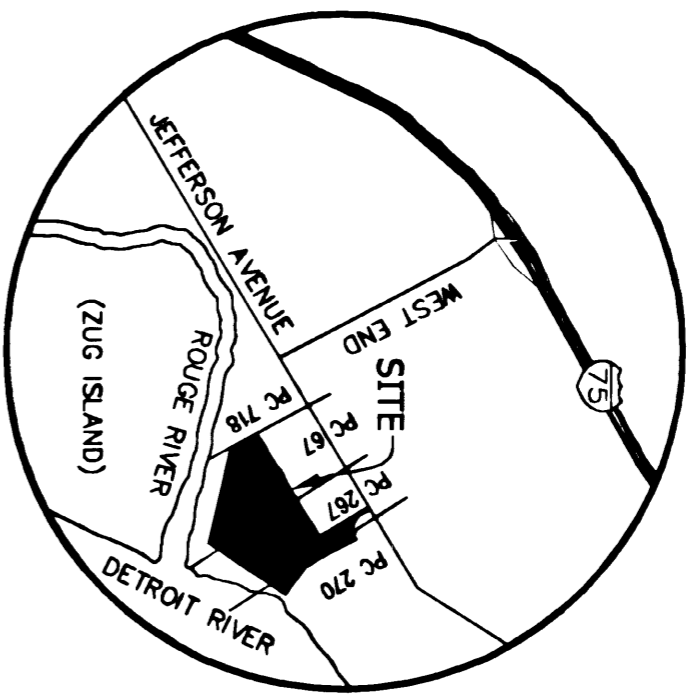
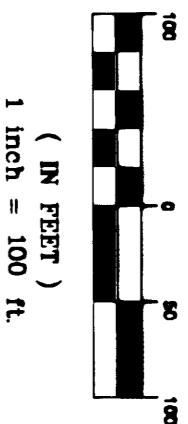
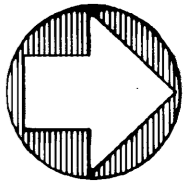


*Martin C. Quinn*

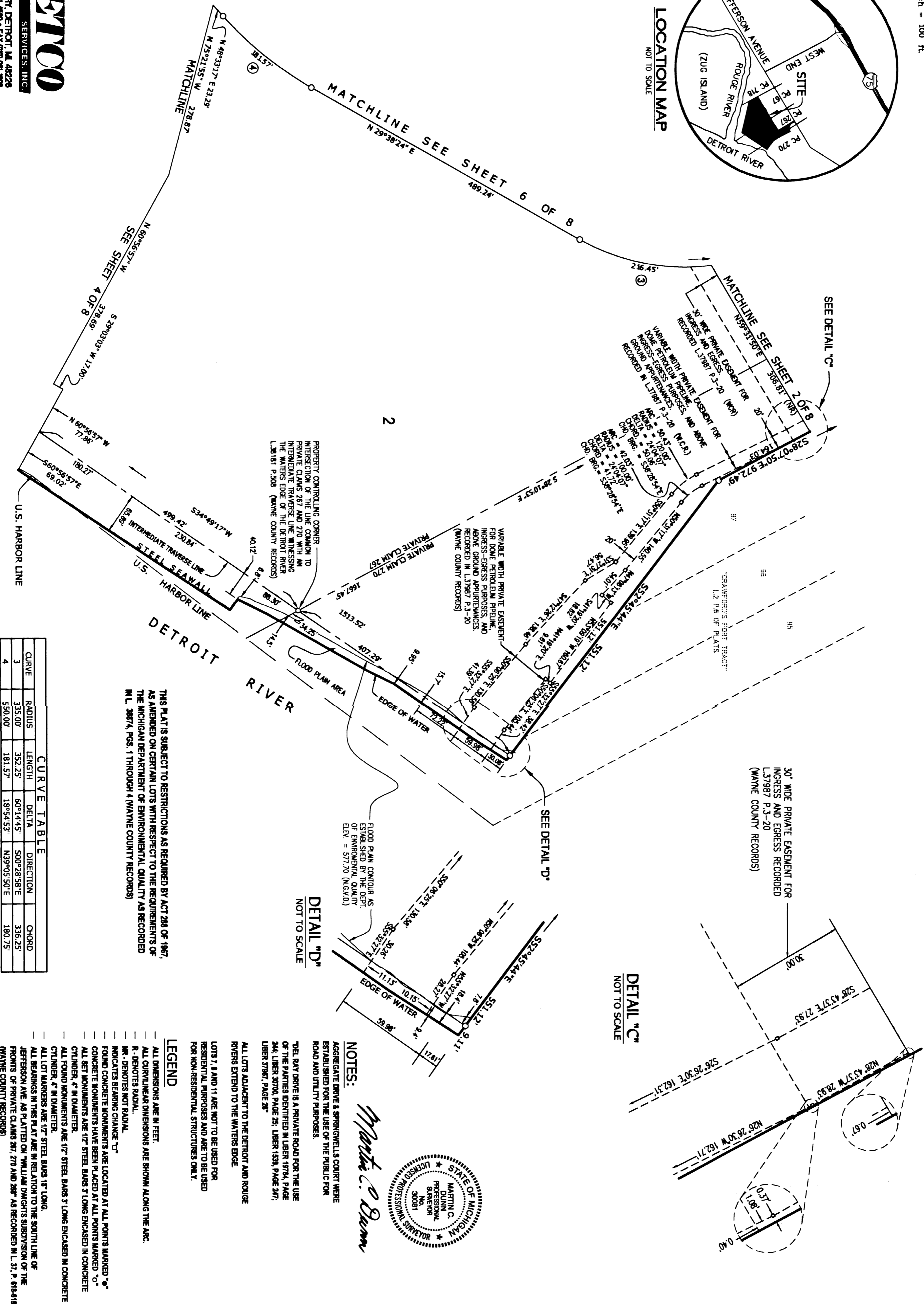
**MEMCO**  
SERVICES, INC.  
274 LIBRARY, DETROIT, MI 48226  
TEL - (313) 961-4330 • FAX (313) 961-7888  
WWW.MEMCOVCSA.COM

**NOTES:**  
AGGREGATE DRIVE & SPRINGWELLS COURT WHERE ESTABLISHED FOR THE USE OF THE PUBLIC FOR ROAD AND UTILITY PURPOSES.  
THE RAY DRIVE IS A PRIVATE ROAD FOR THE USE OF THE PARTIES IDENTIFIED IN LIBER 1974, PAGE 244; LIBER 3070, PAGE 24; LIBER 159, PAGE 247; LIBER 5797, PAGE 28"  
ALL LOTS ADJACENT TO THE DETROIT AND ROUGE RIVERS EXTEND TO THE WATERS EDGE.  
LOTS 7, 8 AND 11 ARE NOT TO BE USED FOR RESIDENTIAL PURPOSES AND ARE TO BE USED FOR NON-RESIDENTIAL STRUCTURES ONLY.

**LEGEND**  
ALL DIMENSIONS ARE IN FEET.  
ALL CURVILINEAR DIMENSIONS ARE SHOWN ALONG THE ARC.  
R - DENOTES RADIAL.  
NR - DENOTES NOT RADIAL.  
INDICATES BEARING CHANGE "C"  
FOUND CONCRETE MONUMENTS ARE LOCATED AT ALL POINTS MARKED "O"  
CONCRETE MONUMENTS HAVE BEEN PLACED AT ALL POINTS MARKED "O"  
ALL SET MONUMENTS ARE 1/2" STEEL BARS 3" LONG ENCASED IN CONCRETE CYLINDER 4" IN DIAMETER.  
ALL FOUND MONUMENTS ARE 1/2" STEEL BARS 3" LONG ENCASED IN CONCRETE CYLINDER 4" IN DIAMETER.  
ALL LOT MARKERS ARE 1/2" STEEL BARS 18" LONG.  
ALL BEARINGS IN THIS PLAT ARE IN RELATION TO THE SOUTHLINE OF THE JEFFERSON AVE. AS PLATTED ON "WILLIAM DWIGHTS SUBDIVISION OF THE FRONTS OF PRIVATE CLAIMS 267, 270 AND 268" AS RECORDED IN L. 37, P. 818-819 (WAYNE COUNTY RECORDS)



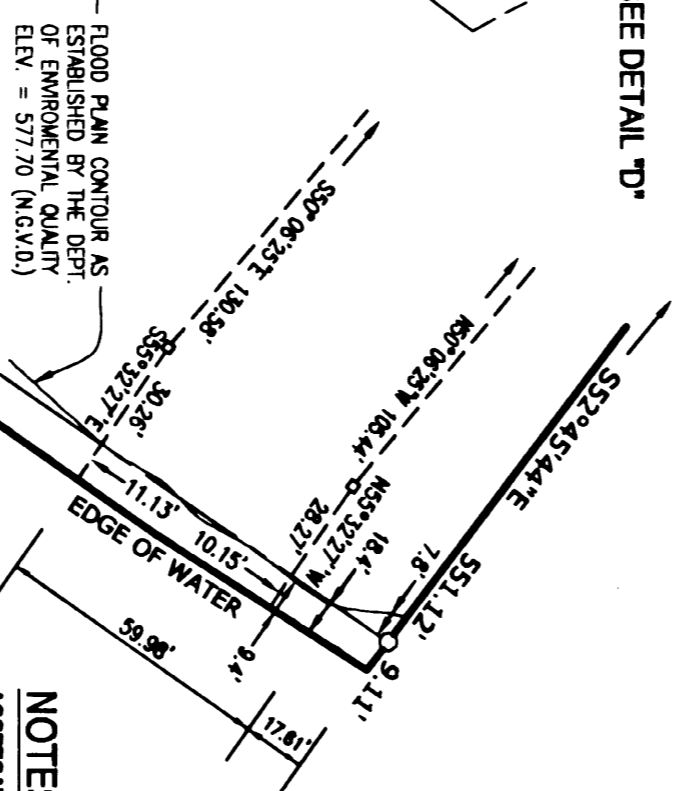
"AMENDED PLAT OF THE VACATED PORTIONS OF LOTS 13 TO 19 INCLUSIVE, OF WILLIAM DWIGHTS SUBDIVISION OF THE FRONTS OF PRIVATE CLAIMS 267, 270 AND 268" AND THE VACATED PORTIONS OF LOTS 95 TO 101, INCLUSIVE, OF CRAWFORD'S FORT TRACT, BEING PRIVATE CLAIM 270, THE EAST PART OF PRIVATE CLAIM 267, AND THE WEST PART OF PRIVATE CLAIM NO. 268, AND PARTS OF PRIVATE CLAIMS 67 AND 267"



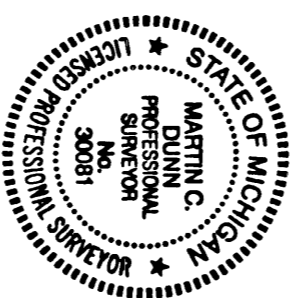
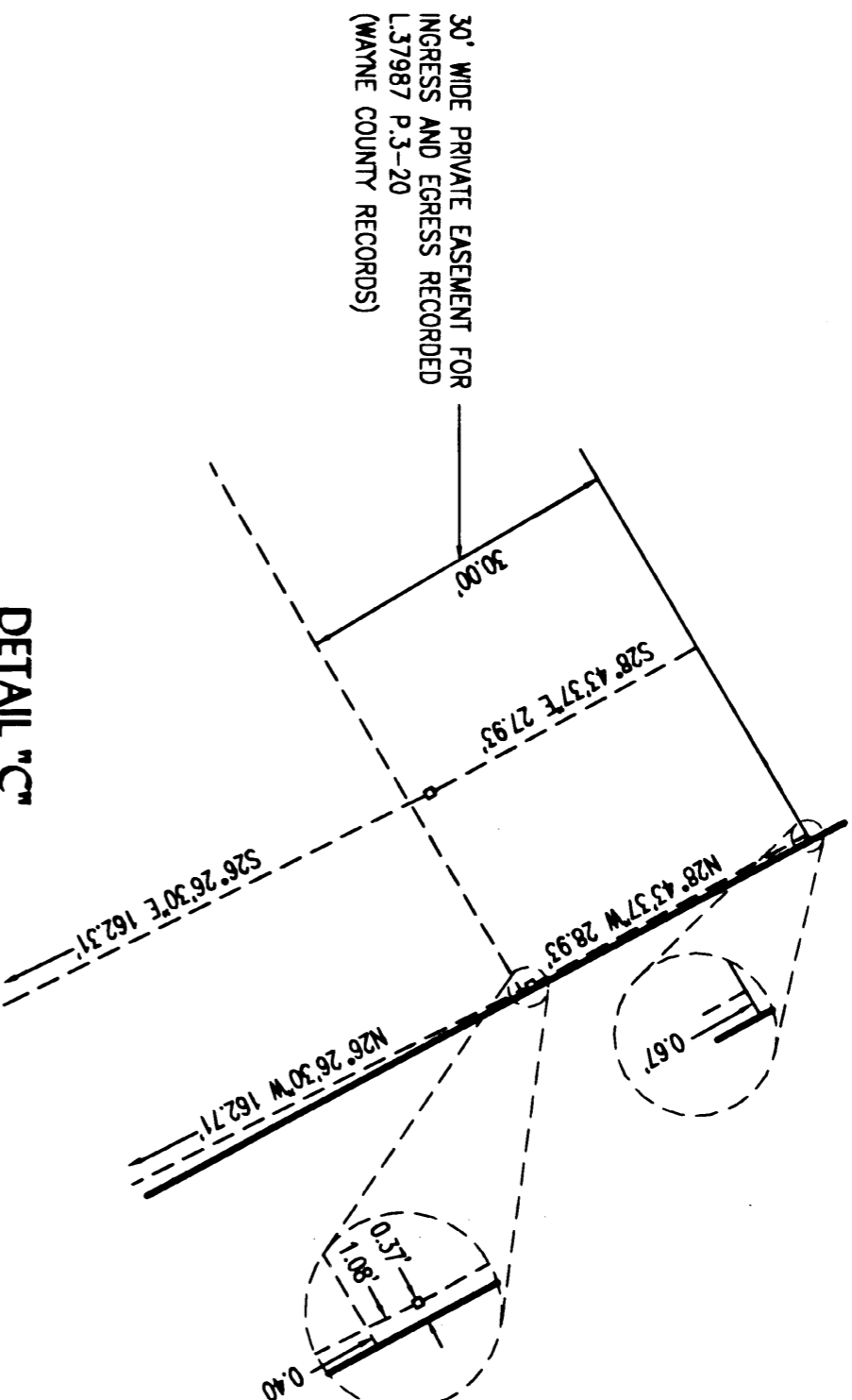
CURVE TABLE				
CURVE	RADIUS	LENGTH	DELTA	CHORD
3	335.00'	352.25'	60°14'45"	500°28'58"E 336.25'
4	550.00'	181.57'	18°54'53"	N39°05'50"E 180.75'

THIS PLAT IS SUBJECT TO RESTRICTIONS AS REQUIRED BY ACT 288 OF 1967, AS AMENDED ON CERTAIN LOTS WITH RESPECT TO THE REQUIREMENTS OF THE MICHIGAN DEPARTMENT OF ENVIRONMENTAL QUALITY AS RECORDED IN L. 38174, PGS. 1 THROUGH 4 (WAYNE COUNTY RECORDS)

DETAIL "D"  
NOT TO SCALE



DETAIL "C"  
NOT TO SCALE



*Martin C. Damm*

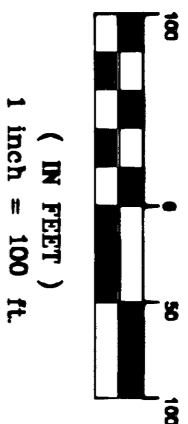
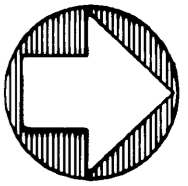
NOTES:

- AGGREGATE DRIVE & SPRINGWELLS COURT WERE ESTABLISHED FOR THE USE OF THE PUBLIC FOR ROAD AND UTILITY PURPOSES.
- THE BAY DRIVE IS A PRIVATE ROAD FOR THE USE OF THE PARTIES IDENTIFIED IN LIBER 18704, PAGE 244, LIBER 37004, PAGE 28, LIBER 1539, PAGE 247, LIBER 37967, PAGE 28"
- ALL LOTS ADJACENT TO THE DETROIT AND ROUGE RIVERS EXTEND TO THE WATERS EDGE.
- LOTS 7, 8 AND 11 ARE NOT TO BE USED FOR RESIDENTIAL PURPOSES AND ARE TO BE USED FOR NON-RESIDENTIAL STRUCTURES ONLY.

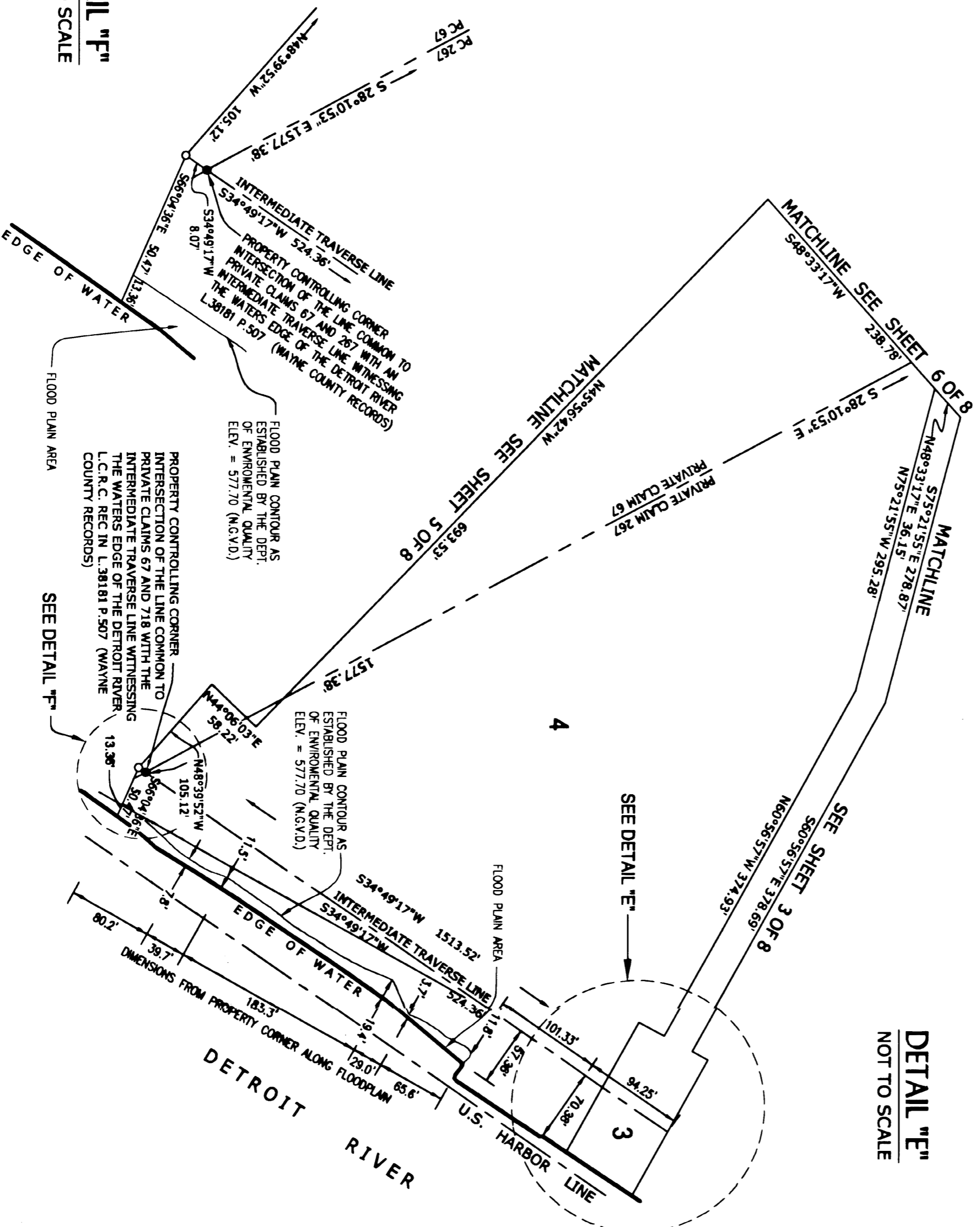
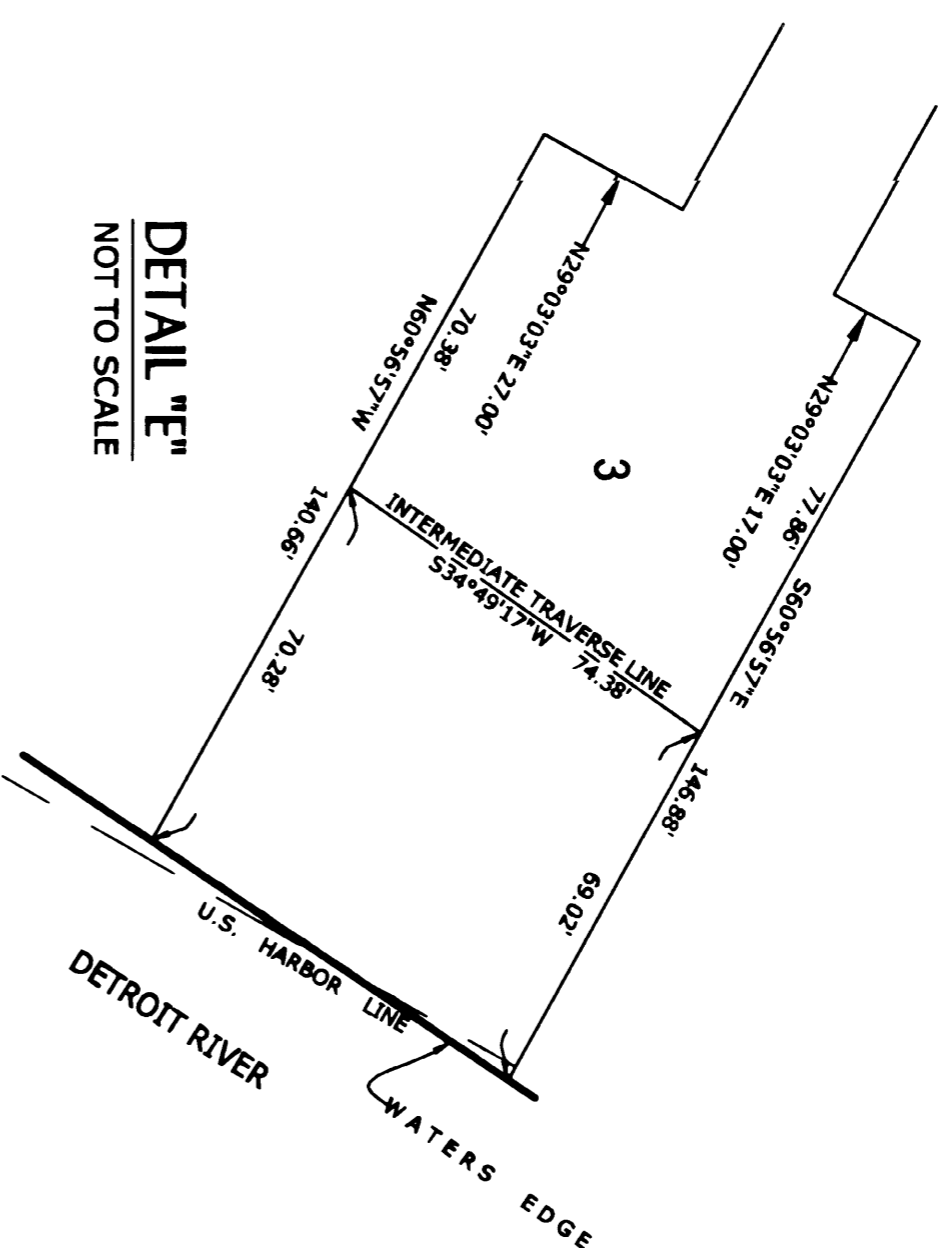
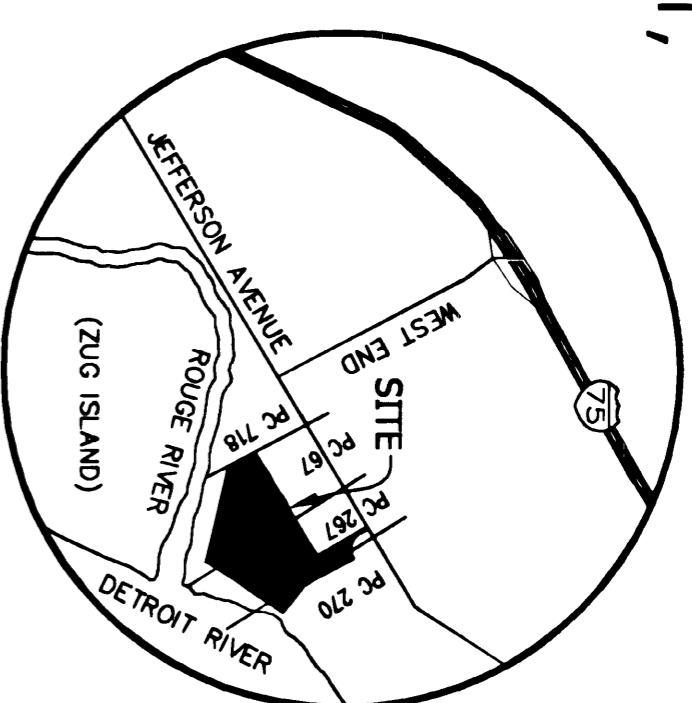
LEGEND

- ALL DIMENSIONS ARE IN FEET.
- ALL CURVILINEAR DIMENSIONS ARE SHOWN ALONG THE ARC.
- R - DENOTES RADIAL.
- WR - DENOTES NOT RADIAL.
- INDICATES BEARING CHANGE "C"
- FOUND CONCRETE MONUMENTS ARE LOCATED AT ALL POINTS MARKED "C"
- CONCRETE MONUMENTS HAVE BEEN PLACED AT ALL POINTS MARKED "O"
- ALL SET MONUMENTS ARE 1/2" STEEL BARS 5' LONG ENCASED IN CONCRETE CYLINDER, 4" IN DIAMETER.
- ALL FOUND MONUMENTS ARE 1/2" STEEL BARS 3' LONG ENCASED IN CONCRETE CYLINDER, 4" IN DIAMETER.
- ALL LOT MARKERS ARE 1/2" STEEL BARS 18" LONG.
- ALL BEARINGS IN THIS PLAT ARE IN RELATION TO THE SOUTH LINE OF JEFFERSON AVE. AS PLATTED ON "WILLIAM DWIGHTS SUBDIVISION OF THE FRONTS OF PRIVATE CLAIMS 267, 270 AND 268" AS RECORDED IN L. 37, P. 818-819 (WAYNE COUNTY RECORDS)

**METCO**  
SERVICES, INC.  
274 LERARY, DETROIT, MI 48226  
TEL - (313) 961-6500 & FAX (313) 961-1038  
www.metcoenv.com



"AMENDED PLAT OF THE VACATED PORTIONS OF LOTS 13 TO 19 INCLUSIVE, OF WILLIAM DWIGHTS SUBDIVISION OF THE FRONTS OF PRIVATE CLAIMS 267, 270 AND 268" AND THE VACATED PORTIONS OF LOTS 95 TO 101, INCLUSIVE, OF CRAWFORD'S FORT TRACT, BEING PRIVATE CLAIM 270, THE EAST PART OF PRIVATE CLAIM 267, AND THE WEST PART OF PRIVATE CLAIM NO. 268, AND PARTS OF PRIVATE CLAIMS 67 AND 267"



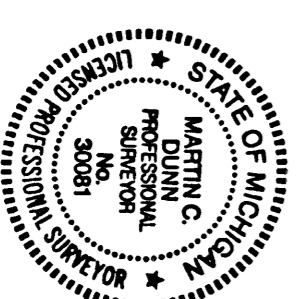
THIS PLAT IS SUBJECT TO RESTRICTIONS AS REQUIRED BY ACT 286 OF 1967, AS AMENDED ON CERTAIN LOTS WITH RESPECT TO THE REQUIREMENTS OF THE MICHIGAN DEPARTMENT OF ENVIRONMENTAL QUALITY AS RECORDED IN L. 38874, PGS. 1 THROUGH 4 (WAYNE COUNTY RECORDS)

**NOTES:**

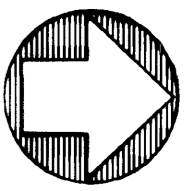
- AGGREGATE DRIVE & SPRINGWELLS COURT WERE ESTABLISHED FOR THE USE OF THE PUBLIC FOR ROAD AND UTILITY PURPOSES.
- 78L BAY DRIVE IS A PRIVATE ROAD FOR THE USE OF THE PARTIES IDENTIFIED IN LIBER 1974, PAGE 244; LIBER 3070A, PAGE 24; LIBER 1539, PAGE 347; LIBER 37967, PAGE 28"
- ALL LOTS ADJACENT TO THE DETROIT AND ROUGE RIVERS EXTEND TO THE WATERS EDGE.
- LOTS 7, 8 AND 11 ARE NOT TO BE USED FOR RESIDENTIAL PURPOSES AND ARE TO BE USED FOR NON-RESIDENTIAL STRUCTURES ONLY.

**LEGEND**

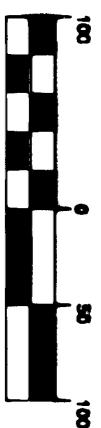
- ALL DIMENSIONS ARE IN FEET.
- ALL CURVILINEAR DIMENSIONS ARE SHOWN ALONG THE ARC.
- R - DENOTES RADIAL.
- WM - DENOTES NOT RADIAL.
- INDICATES BEARING CHANGE "C"
- FOUND CONCRETE MONUMENTS ARE LOCATED AT ALL POINTS MARKED "O"
- CONCRETE MONUMENTS HAVE BEEN PLACED AT ALL POINTS MARKED "O"
- ALL SET MONUMENTS ARE 1/2" STEEL BARS 3" LONG ENCASED IN CONCRETE CYLINDER, 4" IN DIAMETER.
- ALL FOUND MONUMENTS ARE 1/2" STEEL BARS 3" LONG ENCASED IN CONCRETE CYLINDER, 4" IN DIAMETER.
- ALL LOT MARKERS ARE 1/2" STEEL BARS 18" LONG.
- ALL BEARINGS IN THIS PLAT ARE IN RELATION TO THE SOUTH LINE OF JEFFERSON AVE. AS PLATTED ON "WILLIAM DWIGHTS SUBDIVISION OF THE FRONTS OF PRIVATE CLAIMS 267, 270 AND 268" AS RECORDED IN L. 37, P. 618-619 (WAYNE COUNTY RECORDS)



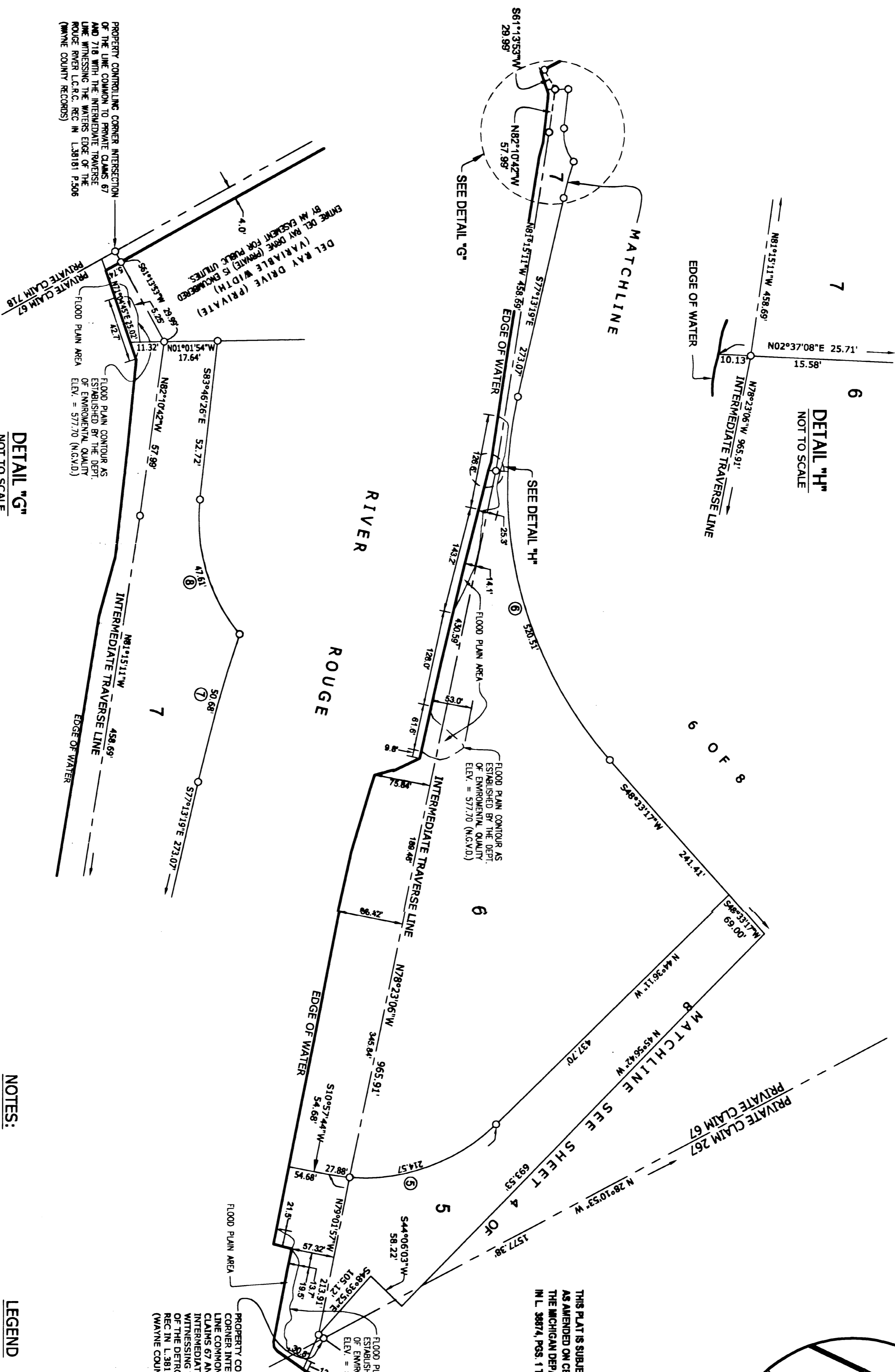
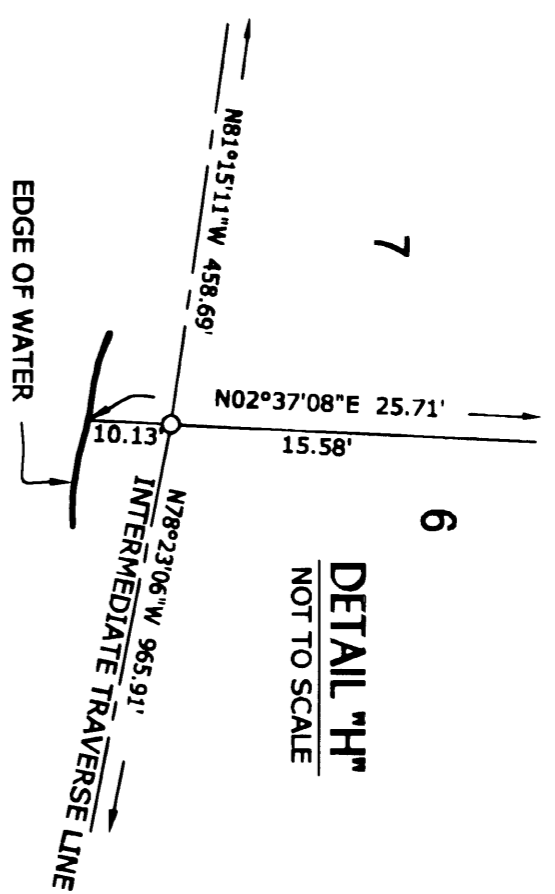
*Martin C. Dunn*



( IN FEET )  
1 inch = 100 ft.

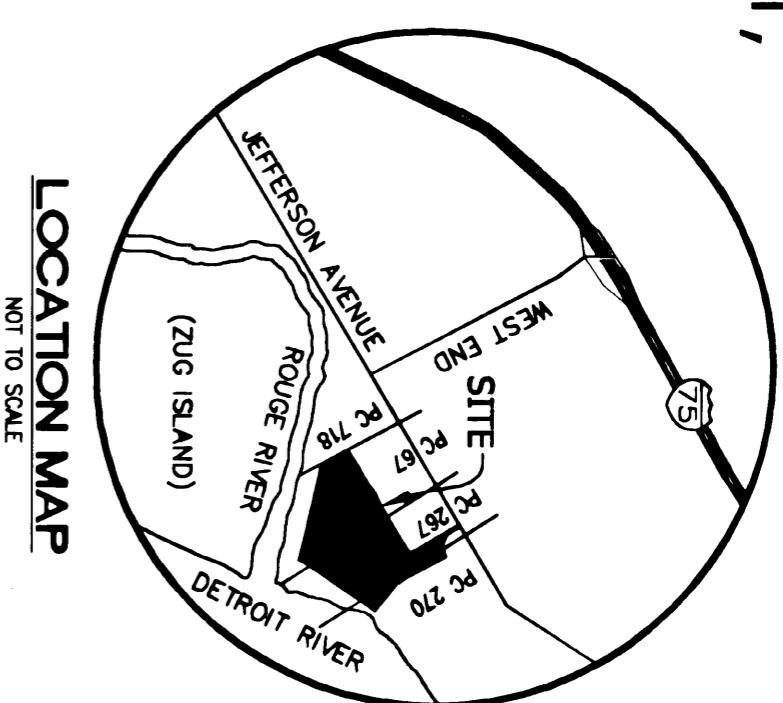


"AMENDED PLAT OF THE VACATED PORTIONS OF LOTS 13 TO 19 INCLUSIVE, OF WILLIAM DWIGHTS SUBDIVISION OF THE FRONTS OF PRIVATE CLAIMS 267, 270 AND 268" AND THE VACATED PORTIONS OF LOTS 95 TO 101, INCLUSIVE, OF CRAWFORD'S FORT TRACT, BEING PRIVATE CLAIM 270, THE EAST PART OF PRIVATE CLAIM 267, AND THE WEST PART OF PRIVATE CLAIM NO. 268, AND PARTS OF PRIVATE CLAIMS 67 AND 267"



DETAIL 'G'  
NOT TO SCALE

CURVE TABLE					
CURVE	RADIUS	LENGTH	DELTA	DIRECTION	CHORD
5	250.00'	242.45'	49°10'37"	N16°49'14"W	233.06'
6	550.00'	520.51'	54°13'24"	N75°39'59"E	501.30'
7	545.00'	50.68'	05°19'42"	S74°33'28"E	50.67'
8	60.00'	47.61'	45°27'52"	N73°36'35"E	46.37'



THIS PLAT IS SUBJECT TO RESTRICTIONS AS REQUIRED BY ACT 208 OF 1967, AS AMENDED ON CERTAIN LOTS WITH RESPECT TO THE REQUIREMENTS OF THE MICHIGAN DEPARTMENT OF ENVIRONMENTAL QUALITY AS RECORDED IN L. 98874, PGS. 1 THROUGH 4 (WAYNE COUNTY RECORDS)

PROPERTY CONTROLLING CORNER INTERSECTION OF THE LINE COMMON TO PRIVATE CLAIMS 67 AND 267 WITH THE INTERMEDIATE TRAVERSE LINE WITNESSING THE WATERS EDGE OF THE DETROIT RIVER L.C.R.C. REC IN L. 38181 P. 507 (WAYNE COUNTY RECORDS)

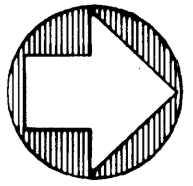


*Martin C. Blum*

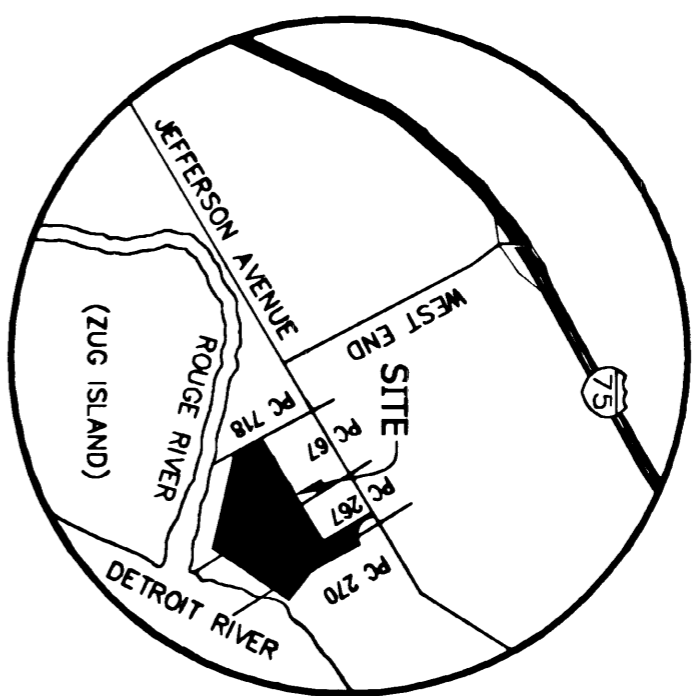
NOTES:  
AGGREGATE DRIVE & SPRINGWELLS COURT WERE ESTABLISHED FOR THE USE OF THE PUBLIC FOR ROAD AND UTILITY PURPOSES.  
DEL RAY DRIVE IS A PRIVATE ROAD FOR THE USE OF THE PARTIES IDENTIFIED IN LIBER 1974, PAGE 24; LIBER 2070, PAGE 25; LIBER 1539, PAGE 27; LIBER 3797, PAGE 28.  
ALL LOTS ADJACENT TO THE DETROIT AND ROUGE RIVERS EXTEND TO THE WATERS EDGE.  
LOTS 7, 8 AND 11 ARE NOT TO BE USED FOR RESIDENTIAL PURPOSES AND ARE TO BE USED FOR NON-RESIDENTIAL STRUCTURES ONLY.

LEGEND  
ALL DIMENSIONS ARE IN FEET.  
ALL CURVILINEAR DIMENSIONS ARE SHOWN ALONG THE ARC.  
R - DENOTES RADIAL.  
RW - DENOTES NOT RADIAL.  
INDICATES BEARING CHANGE "±"  
FOUND CONCRETE MONUMENTS ARE LOCATED AT ALL POINTS MARKED "o"  
CONCRETE MONUMENTS HAVE BEEN PLACED AT ALL POINTS MARKED "o"  
ALL SET MONUMENTS ARE 1/2" STEEL BARS 5' LONG ENCASED IN CONCRETE CYLINDER, 4" IN DIAMETER  
ALL FOUND MONUMENTS ARE 1/2" STEEL BARS 5' LONG ENCASED IN CONCRETE CYLINDER, 4" IN DIAMETER  
ALL LOT MARKERS ARE 1/2" STEEL BARS 18" LONG.  
ALL BEARINGS IN THIS PLAT ARE IN RELATION TO THE SOUTH LINE OF JEFFERSON AVE. AS PLATTED ON "WILLIAM DWIGHTS SUBDIVISION OF THE FRONTS OF PRIVATE CLAIMS 267, 270 AND 268" AS RECORDED IN L. 37, P. 616419 (WAYNE COUNTY RECORDS)

**METRO**  
SERVICES, INC.  
2724 LIBRARY, DETROIT, MI 48226  
TEL: (313) 961-4500 • FAX: (313) 961-7888  
WWW.METROSERVICES.COM



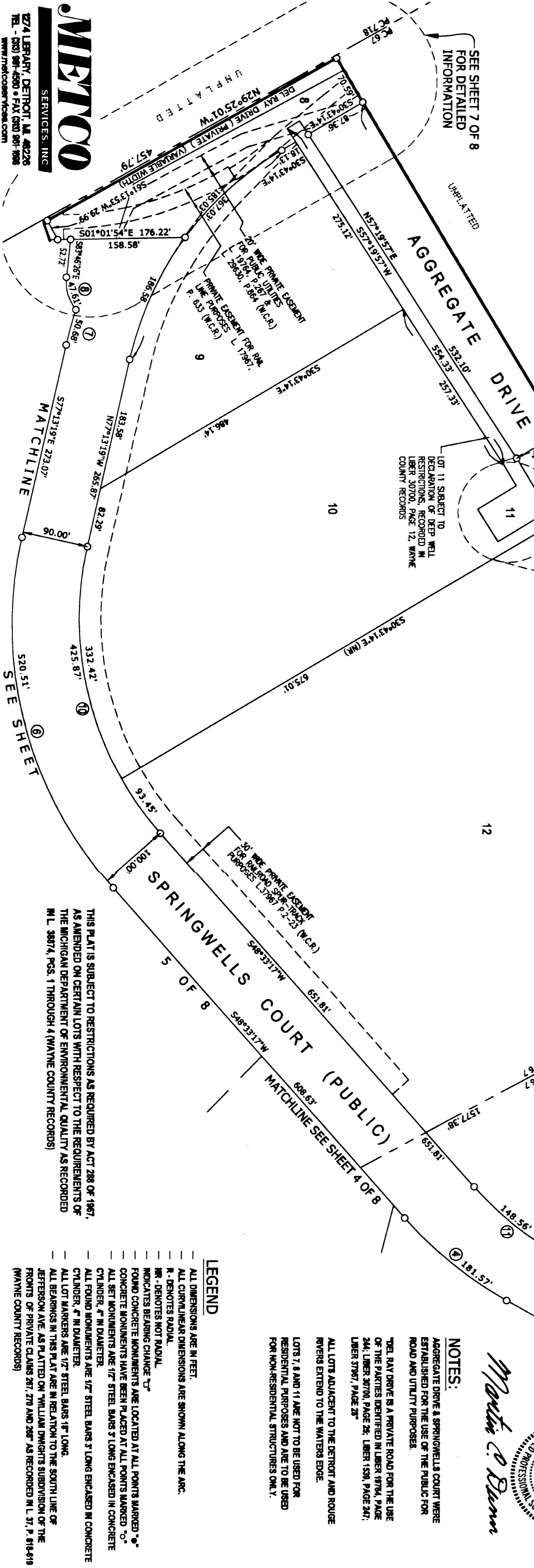
( IN FEET )  
1 inch = 100 ft



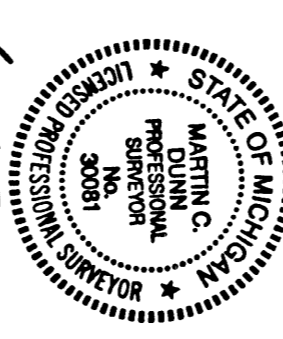
LOCATION MAP  
NOT TO SCALE

CURVE	RADIUS	LENGTH	DELTA	DIRECTION	CHORD
3	335.00'	352.25'	60°14'45"	S00°28'58"E	336.25'
4	550.00'	181.57'	18°54'53"	N39°05'50"E	180.75'
6	550.00'	520.51'	54°13'24"	N75°39'59"E	501.30'
7	545.00'	50.68'	05°19'42"	S74°33'28"E	50.65'
8	60.00'	47.61'	45°27'52"	S73°36'35"W	46.37'
9	455.00'	367.03'	46°13'06"	S54°06'46"E	357.16'
10	450.00'	425.87'	54°13'24"	N75°39'59"E	410.15'
11	451.08'	148.56'	18°52'09"	N39°05'50"E	147.88'
12	245.00'	257.61'	60°14'45"	N00°28'58"W	245.91'

"AMENDED PLAT OF THE VACATED PORTIONS OF LOTS 13 TO 19 INCLUSIVE, OF WILLIAM DWIGHTS SUBDIVISION OF THE FRONTS OF PRIVATE CLAIMS 267, 270 AND 268" AND THE VACATED PORTIONS OF LOTS 95 TO 101, INCLUSIVE, OF CRAWFORD'S FORT TRACT, BEING PRIVATE CLAIM 270, THE EAST PART OF PRIVATE CLAIM 267, AND THE WEST PART OF PRIVATE CLAIM NO. 268, AND PARTS OF PRIVATE CLAIMS 67 AND 267"



NOTES:  
AGGREGATE DRIVE & SPRINGWELLS COURT WERE ESTABLISHED FOR THE USE OF THE PUBLIC FOR ROAD AND UTILITY PURPOSES.  
DELRAY DRIVE IS A PRIVATE ROAD FOR THE USE OF THE PARTIES IDENTIFIED IN LIBER 197A, PAGE 24; LIBER 30700, PAGE 26; LIBER 159, PAGE 247; LIBER 37867, PAGE 28.  
ALL LOTS ADJACENT TO THE DETROIT AND ROUGE RIVERS EXTEND TO THE WATERS EDGE.  
LOTS 7, 8 AND 11 ARE NOT TO BE USED FOR RESIDENTIAL PURPOSES AND ARE TO BE USED FOR NON-RESIDENTIAL STRUCTURES ONLY.

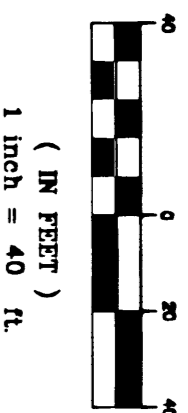
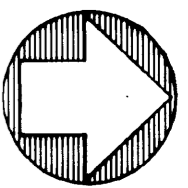


LEGEND

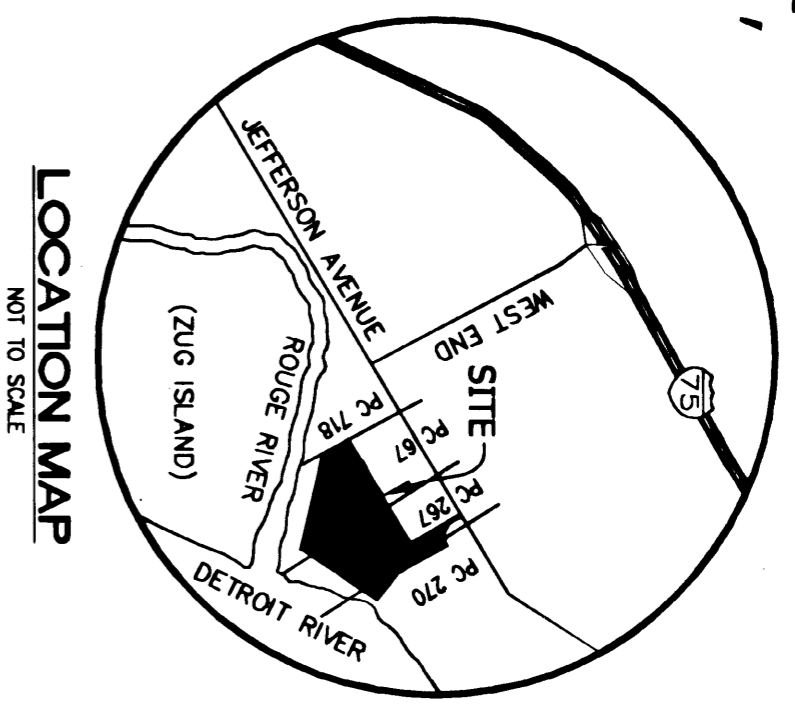
- ALL DIMENSIONS ARE IN FEET.
- ALL CURVILINEAR DIMENSIONS ARE SHOWN ALONG THE ARC.
- P - DENOTES RADIAL.
- RM - DENOTES NOT RADIAL.
- INDICATES BEARING CHANGE "C".
- FOUND CONCRETE MONUMENTS ARE LOCATED AT ALL POINTS MARKED "C".
- CONCRETE MONUMENTS HAVE BEEN PLACED AT ALL POINTS MARKED "O".
- ALL SET MONUMENTS ARE 1/2" STEEL BARS 3" LONG ENCASED IN CONCRETE CYLINDER, 4" IN DIAMETER.
- ALL FOUND MONUMENTS ARE 1/2" STEEL BARS 3" LONG ENCASED IN CONCRETE CYLINDER, 4" IN DIAMETER.
- ALL LOT MARKERS ARE 1/2" STEEL BARS 18" LONG.
- ALL BEARINGS IN THIS PLAT ARE IN RELATION TO THE SOUTH LINE OF THE JEFFERSON AVE. AS PLATTED ON "WILLIAM DWIGHTS SUBDIVISION OF THE FRONTS OF PRIVATE CLAIMS 267, 270 AND 268" AS RECORDED IN L. 37, P. 614-619 (WAYNE COUNTY RECORDS)

THIS PLAT IS SUBJECT TO RESTRICTIONS AS REQUIRED BY ACT 288 OF 1967, AS AMENDED ON CERTAIN LOTS WITH RESPECT TO THE REQUIREMENTS OF THE MICHIGAN DEPARTMENT OF ENVIRONMENTAL QUALITY AS RECORDED IN L. 38674, PGS. 1 THROUGH 4 (WAYNE COUNTY RECORDS)

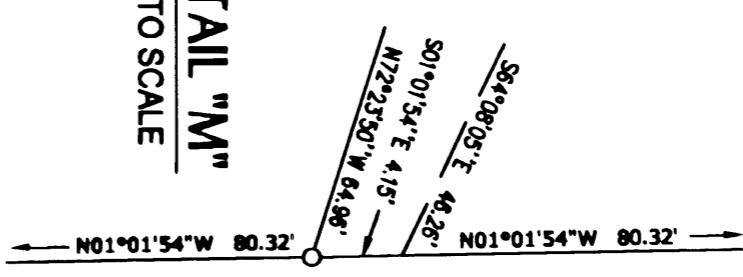
**MEMCO** SERVICES INC.  
274 LIBRARY, DETROIT, MI 48226  
TEL - (313) 987-4500 • FAX (313) 987-7088  
WWW.MEMCOINC.COM



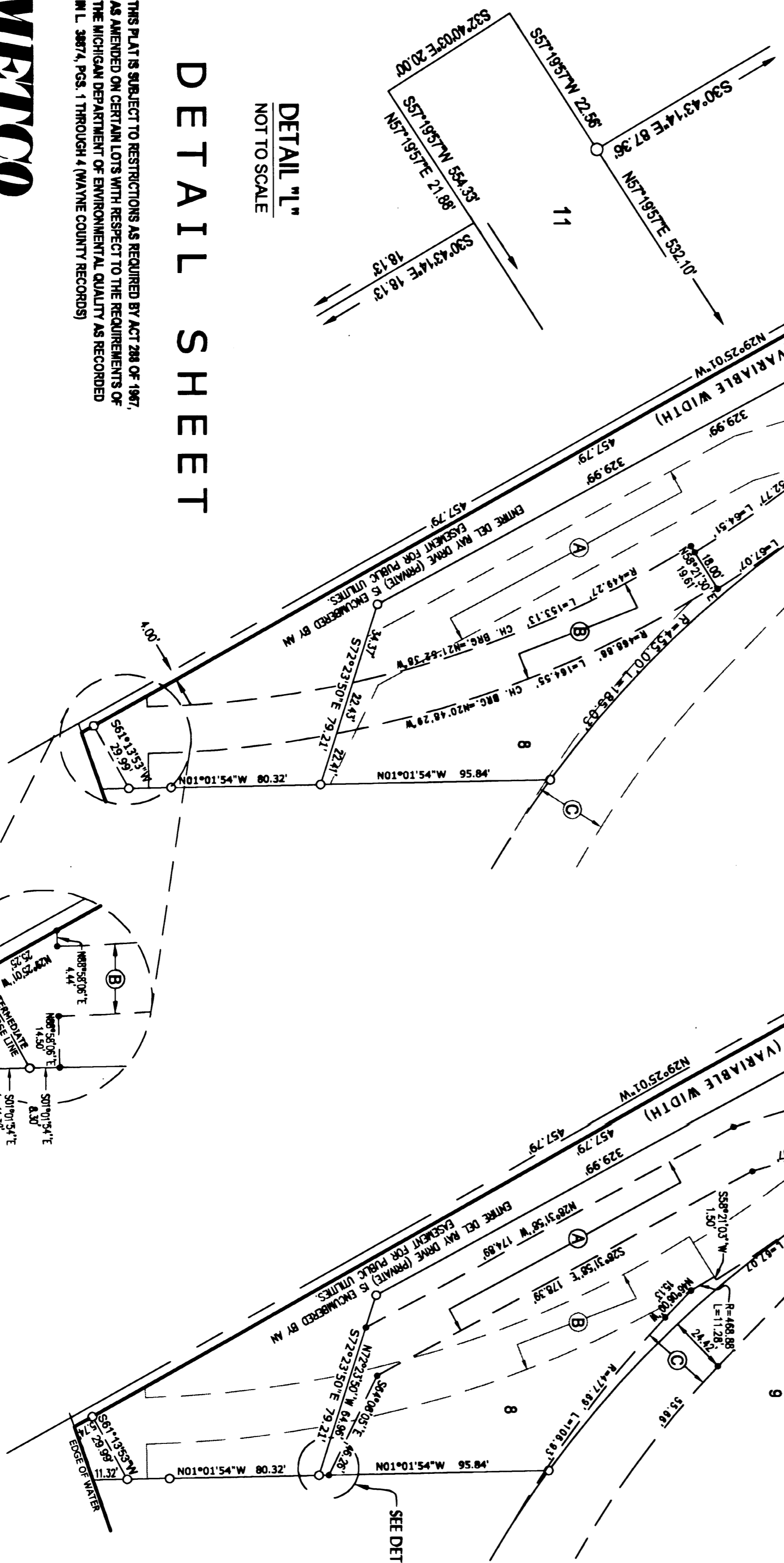
"AMENDED PLAT OF THE VACATED PORTIONS OF LOTS 13 TO 19 INCLUSIVE, OF WILLIAM DWIGHTS SUBDIVISION OF THE FRONTS OF PRIVATE CLAIMS 267, 270 AND 268" AND THE VACATED PORTIONS OF LOTS 95 TO 101, INCLUSIVE, OF CRAWFORD'S FORT TRACT, BEING PRIVATE CLAIM 270, THE EAST PART OF PRIVATE CLAIM 267, AND THE WEST PART OF PRIVATE CLAIM NO. 268, AND PARTS OF PRIVATE CLAIMS 67 AND 267"



DETAIL "M"  
NOT TO SCALE



DETAIL "L"  
NOT TO SCALE



DETAIL SHEET

THIS PLAT IS SUBJECT TO RESTRICTIONS AS REQUIRED BY ACT 288 OF 1967, AS AMENDED ON CERTAIN LOTS WITH RESPECT TO THE REQUIREMENTS OF THE MICHIGAN DEPARTMENT OF ENVIRONMENTAL QUALITY AS RECORDED IN L. 38674, PGS. 1 THROUGH 4 (MAVNE COUNTY RECORDS)

CURVE TABLE					
CURVE	RADIUS	LENGTH	DELTA	CHORD	
9	455.00	367.03	46°13'06"	554°06'46"E	357.16

**METCO**  
SERVICES, INC.  
274 LIBERTY, DETROIT, MI 48226  
TEL - (313) 961-6500 • FAX (313) 961-1888  
WWW.METCOENGINEERING.COM

- Ⓐ 20' WIDE PRIVATE EASEMENT FOR PUBLIC UTILITIES  
L. 19764, P. 267 & L. 29630, P. 864 (MCR)
- Ⓑ VARIABLE WIDTH PRIVATE EASEMENT FOR RAIL LINE PURPOSES  
L. 17967, P. 633 (WCR)
- Ⓒ 30' WIDE PRIVATE EASEMENT FOR RAILROAD SPUR-TRACK PURPOSES  
L. 37967, P. 2-23 (MCR)

NOTES:  
AGGREGATE DRIVE & SPRINGWELLS COURT WERE ESTABLISHED FOR THE USE OF THE PUBLIC FOR ROAD AND UTILITY PURPOSES.  
DEL RAY DRIVE IS A PRIVATE ROAD FOR THE USE OF THE PARTIES IDENTIFIED IN LIBER 19764, PAGE 244; LIBER 37900, PAGE 25; LIBER 1539, PAGE 247; LIBER 3787, PAGE 27.  
ALL LOTS ADJACENT TO THE DETROIT AND ROUGE RIVERS ADJACENT TO THE WATERS EDGE.  
LOTS 7, 8 AND 11 ARE NOT TO BE USED FOR RESIDENTIAL PURPOSES AND ARE TO BE USED FOR NON-RESIDENTIAL STRUCTURES ONLY.

*Martin C. Duman*  
MARTIN C. DUMAN  
REGISTERED PROFESSIONAL SURVEYOR  
NO. 30081  
STATE OF MICHIGAN

LEGEND  
ALL DIMENSIONS ARE IN FEET.  
ALL CURVILINEAR DIMENSIONS ARE SHOWN ALONG THE ARC.  
R - DENOTES RADIAL.  
NR - DENOTES NOT RADIAL.  
INDICATES BEARING CHANGE "C"  
FOUND CONCRETE MONUMENTS ARE LOCATED AT ALL POINTS MARKED "C"  
CONCRETE MONUMENTS HAVE BEEN PLACED AT ALL POINTS MARKED "O"  
ALL SET MONUMENTS ARE 1/2" STEEL BARS 5' LONG ENCASED IN CONCRETE CYLINDER, 4" IN DIAMETER.  
ALL FOUND MONUMENTS ARE 1/2" STEEL BARS 5' LONG ENCASED IN CONCRETE CYLINDER, 4" IN DIAMETER.  
ALL LOT MARKERS ARE 1/2" STEEL BARS 18" LONG.  
ALL BEARINGS IN THIS PLAT ARE IN RELATION TO THE SOUTH LINE OF JEFFERSON AVE. AS PLATTED ON "WILLIAM DWIGHTS SUBDIVISION OF THE FRONTS OF PRIVATE CLAIMS 267, 270 AND 268" AS RECORDED IN L. 37, P. 618-619 (MAVNE COUNTY RECORDS)

LIBER 121 PAGE 69  
SHEET 8 OF 8

**"AMENDED PLAT OF THE VACATED PORTIONS OF LOTS 13 TO 19 INCLUSIVE, OF WILLIAM DWIGHTS SUBDIVISION OF THE FRONTS OF PRIVATE CLAIMS 267, 270 AND 268" AND THE VACATED PORTIONS OF LOTS 95 TO 101, INCLUSIVE, OF CRAWFORD'S FORT TRACT, BEING PRIVATE CLAIM 267, AND THE WEST PART OF PRIVATE CLAIM 270, THE EAST PART OF PRIVATE CLAIM 267, AND THE WEST PART OF PRIVATE CLAIM NO. 268, AND PARTS OF PRIVATE CLAIMS 67 AND 267"**

**SURVEYOR'S CERTIFICATE**

I, MARTIN C. DUNN, SURVEYOR CERTIFY:

THAT I HAVE SURVEYED, DIVIDED AND MAPPED THE LAND SHOWN ON THIS PLAT DESCRIBED AS FOLLOWS:

AMENDED PLAT OF THE VACATED PART OF LOTS 13 TO 19 INCLUSIVE, OF "WILLIAM DWIGHTS SUBDIVISION OF THE FRONTS OF PRIVATE CLAIMS 267, 270 AND 268" AND THE VACATED PORTIONS OF LOTS 95 TO 101, INCLUSIVE OF "CRAWFORD'S FORT TRACT, BEING PRIVATE CLAIM 270, THE EAST PART OF PRIVATE CLAIM 267, AND THE WEST PART OF PRIVATE CLAIM NO. 268", AND PARTS OF PRIVATE CLAIMS 67 AND 267, BEING MORE PARTICULARLY DESCRIBED AS:

COMMENCING AT THE INTERSECTION OF THE LINE COMMON TO PRIVATE CLAIMS 67 AND 267 WITH THE SOUTHERLY LINE OF WEST JEFFERSON AVENUE; THENCE N59°22'59"E ALONG THE SOUTHERLY LINE OF SAID WEST JEFFERSON AVENUE 689.67 FEET TO THE POINT OF BEGINNING;

THENCE CONTINUING N59°22'59"E ALONG THE SOUTHERLY LINE OF SAID WEST JEFFERSON AVENUE 100.00 FEET; THENCE S30°36'21"E 295.24 FEET TO A POINT OF CURVATURE TO THE LEFT;

THENCE ALONG SAID CURVE, TO THE LEFT, HAVING A RADIUS OF 296.31 FEET AND ARC LENGTH OF 232.75 FEET, A DELTA ANGLE OF 45°00'23" A CHORD BEARING OF S77°25'12"E, AND A CHORD DISTANCE OF 226.82 FEET TO A POINT OF COMPOUND CURVATURE;

THENCE ALONG SAID CURVE, TO THE LEFT, HAVING A RADIUS OF 211.40 FEET, AN ARC LENGTH OF 67.79 FEET, A DELTA ANGLE OF 18°21'39", A CHORD BEARING OF N7°05'32"E, AND A CHORD DISTANCE OF 67.46 FEET;

THENCE N61°44'31"E 73.11 FEET;

THENCE S28°07'50"E 972.49 FEET;

THENCE S57°45'44"E 551.12 FEET TO AN INTERMEDIATE TRAVERSE LINE WITNESSING THE WATERS EDGE OF THE DETROIT RIVER;

THENCE S34°49'17"W ALONG SAID INTERMEDIATE TRAVERSE LINE 1513.52 FEET TO AN INTERMEDIATE TRAVERSE LINE WITNESSING THE WATERS EDGE OF THE ROUGE RIVER;

THENCE ALONG SAID INTERMEDIATE TRAVERSE LINE THE FOLLOWING (5) FIVE COURSES: N79°01'57"W 213.91 FEET; N78°23'06"W 965.91 FEET; THENCE N81°15'11"W 458.69 FEET; THENCE N82°10'42"W 57.99 FEET; THENCE S61°13'53"W 29.99 FEET TO THE INTERSECTION OF SAID INTERMEDIATE TRAVERSE LINE WITH A LINE 4 FEET EAST OF AND PARALLEL TO THE WESTERLY LINE OF PRIVATE CLAIM 67;

THENCE N29°25'01"W ALONG SAID LINE 4 FEET EAST OF AND PARALLEL TO THE WESTERLY LINE OF PRIVATE CLAIM 67, A DISTANCE OF 457.79 FEET;

THENCE N59°16'46"E 2101.95 FEET;

THENCE N30°36'21"W 997.51 FEET TO THE POINT OF BEGINNING. CONTAINING 12 LOTS NUMBERED 1 THROUGH 12 AND CONTAINING 76,240 AC. GROSS TO WATERS EDGE (72,694 AC. NET TO INTERMEDIATE TRAVERSE LINE) MORE OR LESS.

THAT I HAVE, IN DETERMINING THE TYPE, WIDTH AND LOCATION OF ANY UTILITY EASEMENTS SHOWN, CONTACTED ALL UTILITY COMPANIES THAT PROVIDE SERVICES TO THIS SUBDIVISION. I HAVE REVIEWED THE POLICY OF TITLE INSURANCE AND CAUSED TO BE SEARCHED, THE RECORDS OF THE REGISTER OF DEEDS FOR ANY RECORDED EASEMENTS BURDENING THE SUBJECT LANDS WHICH WERE CREATED BETWEEN THE DATE OF ISSUANCE OF TITLE POLICY AND THE SUBMITTAL DATE OF THE AMENDED PLAT AND HAVE PROVIDED A COPY OF THESE RECORDS TO THE MICHIGAN DEPARTMENT OF CONSUMER AND INDUSTRY SERVICES UPON SUBMISSION OF THE AMENDED PLAT.

THAT ALL LOTS ADJACENT TO THE DETROIT AND ROUGE RIVERS EXTEND TO THE WATERS EDGE.

THAT I HAVE MADE SUCH SURVEY, LAND DIVISION AND PLAT BY THE DIRECTION OF THE OWNERS OF SUCH LAND, THAT SUCH PLAT IS A CORRECT REPRESENTATION OF ALL EXTERIOR BOUNDARIES OF THE LAND SURVEYED AND THE SUBDIVISION OF IT.

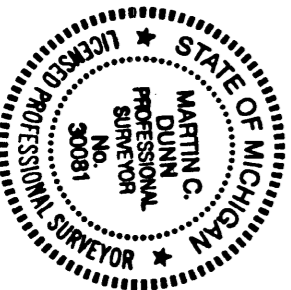
THAT THE REQUIRED MONUMENTS AND LOT MARKERS HAVE BEEN LOCATED IN THE GROUND.

THAT THE ACCURACY OF THE SURVEY IS WITHIN THE LIMITS REQUIRED BY SECTION 126 OF THE ACT.

THAT THE BEARINGS SHOWN ON THE PLAT ARE EXPRESSED AS REQUIRED BY SECTION 126 (3) OF THE ACT AND ARE EXPLAINED IN THE LEGEND.)

METCO SERVICES INC.

*Martin C. Dunn*  
MARTIN C. DUNN #30081  
VICE-PRESIDENT

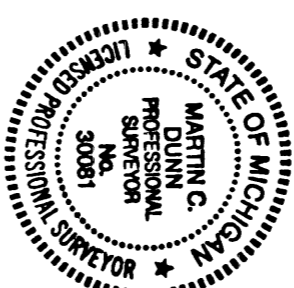


DATE: 4/5/04

I, MARTIN C. DUNN, SURVEYOR:

DO HEREBY CERTIFY THAT THIS "AMENDED PLAT OF THE VACATED PORTIONS OF LOTS 13 THROUGH 19 INCLUSIVE, OF WILLIAM DWIGHTS SUBDIVISION OF THE FRONTS OF PRIVATE CLAIMS 267, 270, AND 268, AND THE VACATED PORTIONS OF LOTS 95 TO 101, INCLUSIVE, OF CRAWFORD'S FORT TRACT, BEING PRIVATE CLAIM 270, THE EAST PART OF PRIVATE CLAIM 267, AND THE WEST PART OF PRIVATE CLAIM NO. 268, AND PARTS OF PRIVATE CLAIMS 67 AND 267" IS A TRUE AND EXACT COPY OF OF THE PLAT ATTACHED TO THE PETITION WHICH WAS APPROVED AND ADOPTED ON MAY 16, 2003 IN THE CIRCUIT COURT FOR THE COUNTY OF WAYNE, STATE OF MICHIGAN, IN TESTIMONY WHEREOF, I HAVE HERETO SET MY HAND AND OFFICIAL SEAL AT THE CITY OF DETROIT, COUNTY OF WAYNE, STATE OF MICHIGAN, THIS 5th DAY OF MAY, 2004. (C.C. FILE #01-135188-CH)

*Martin C. Dunn*  
MARTIN C. DUNN, P.S. 30081  
VICE-PRESIDENT  
METCO SERVICES  
1274 LIBRARY  
DETROIT, MICHIGAN 48226



I, CATHY M. GARRETT, COUNTY CLERK:

DO HEREBY CERTIFY THAT THIS "AMENDED PLAT OF THE VACATED PORTIONS OF LOTS 13 THROUGH 19 INCLUSIVE, OF WILLIAM DWIGHTS SUBDIVISION OF THE FRONTS OF PRIVATE CLAIMS 267, 270, AND 268, AND THE VACATED PORTIONS OF LOTS 95 TO 101, INCLUSIVE, OF CRAWFORD'S FORT TRACT, BEING PRIVATE CLAIM 270, THE EAST PART OF PRIVATE CLAIM 267, AND THE WEST PART OF PRIVATE CLAIM NO. 268, AND PARTS OF PRIVATE CLAIMS 67 AND 267" IS A TRUE AND EXACT COPY OF OF THE PLAT ATTACHED TO THE PETITION WHICH WAS APPROVED AND ADOPTED ON MAY 16, 2003 IN THE CIRCUIT COURT FOR THE COUNTY OF WAYNE, STATE OF MICHIGAN, IN TESTIMONY WHEREOF, I HAVE HERETO SET MY HAND AND OFFICIAL SEAL AT THE CITY OF DETROIT, COUNTY OF WAYNE, STATE OF MICHIGAN, THIS 7th DAY OF MAY, 2004. (C.C. FILE #01-135188-CH)

*Cathy M. Garrett*  
CATHY M. GARRETT  
COUNTY CLERK

**RECORDING CERTIFICATE**

STATE OF MICHIGAN)  
COUNTY OF WAYNE)

THIS PLAT WAS RECEIVED FOR RECORD ON THE 11th DAY OF MAY, 2004  
AT 12:13 PM, AND IS RECORDED IN LIBER 121 OF PLATS ON PAGES 62-69

*Bernard J. Youngblood*  
BERNARD J. YOUNGBLOOD  
REGISTER OF DEEDS

**EXAMINED AND APPROVED**  
DATE May 10, 2004  
BY Wayward R. Dyer  
WAYWARD R. DYER, P.S., DIRECTOR  
OFFICE OF LAND SURVEY  
AND RECONSTRUCTION