

Janice M. Winfrey
City Clerk

City of Detroit
OFFICE OF THE CITY CLERK

Andre P. Gilbert II
Deputy City Clerk

DEPARTMENT PETITION REFERENCE COMMUNICATION

To: The Department or Commission Listed Below

From: Janice M Winfrey, Detroit City Clerk

The following petition is herewith referred to you for report and recommendation to the City Council.

In accordance with that body's directive, kindly return the same with your report in duplicate within four (4) weeks.

Petition No.	2026-081
Name of Petitioner	Detroit & Northern, LLC
Description of Petition	Petition requesting a door that will swing out into the public east-west alley adjacent to the parcel commonly known as 1133 Griswold St.
Type of Petition	Alley Vacation/Encroachment/Utility Vacation
Submission Date	04/29/26
Concerned Departments	Buildings, Safety Engineering, and Environmental Department (BSEED), Detroit Department of Transportation (DDOT), Detroit Fire Department (DFD), Detroit Health Department (DHD), General Services Department (GSD), Media Services Department, Municipal Parking Department, Police Department (DPD)
Petitioner Contact	Ana Navarrete Giffels Webster 28 W. Adams Suite 1200 Detroit, MI 48226 313-962-4442 (P) 313-850-1443 (M) anavarrete@giffelswebster.com



**CITY OF DETROIT
DEPARTMENT OF PUBLIC WORKS
CITY ENGINEERING DIVISION**

**COLEMAN A. YOUNG MUNICIPAL CENTER
2 WOODWARD AVE. SUITE 601
DETROIT, MICHIGAN 48226
PHONE: (313) 224-3949 TTY: 711
WWW.DETROITMI.GOV**

To: Clerk's Office
From: The Department of Public Works
City Engineering Division
MapsandRecordsBureau@DetroitMI.Gov
(313) 224-3970

Petitioner:
Detroit & Northern LLC
1133 Griswold St.
Detroit, MI, 48226

On behalf of the above-mentioned petitioner the Department of Public Works: City Engineering Division is submitting a petition request for the action below. The petitioner has received a project consultation from the Department of Public Works: City Engineering Division and has been advised the following:

Type of action recommended:

The petitioner Detroit & Northern LLC is requesting a door that will swing out into the public east-west alley adjacent to the parcel commonly known as 1133 Griswold St.

Raven Wright
Supervisor of Maps & Records
Department of Public Works
City Engineering Division
313-224-3985



**CITY OF DETROIT
DEPARTMENT OF PUBLIC WORKS
CITY ENGINEERING DIVISION**

**COLEMAN A. YOUNG MUNICIPAL CENTER
2 WOODWARD AVE. SUITE 601
DETROIT, MICHIGAN 48226
PHONE: (313) 224-3949 TTY: 711
WWW.DETROITMI.GOV**



March 16, 2026

**Honorable Detroit City Council
C/o Detroit City Clerk
200 Coleman A. Young Municipal Center
2 Woodward Avenue
Detroit, Michigan 48226**

RE: Giffels Webster - Petition requesting encroachment into the public Alley right-of-way, between Griswold Street and Shelby Street.

Giffels Webster, 28 W. Adams, Suite 1200, Detroit, Michigan 48226 on behalf of Detroit & Northern LLC, 401 S Washington sq. Suite 102, Lansing, Michigan respectfully requests the following encroachment into the public rights-of-way of the Alley bounded by Griswold Street, Michigan Avenue, Shelby Street, and State St.

- Proposed encroachment for out swinging door into the public Alley rights-of-way. Limits of the encroachment can be found on the attached exhibit.

If you should have any questions, please do not hesitate to contact me at (P) 313.962.4442 (M) 313.850.1443 or at anavarrete@giffelswebster.com.

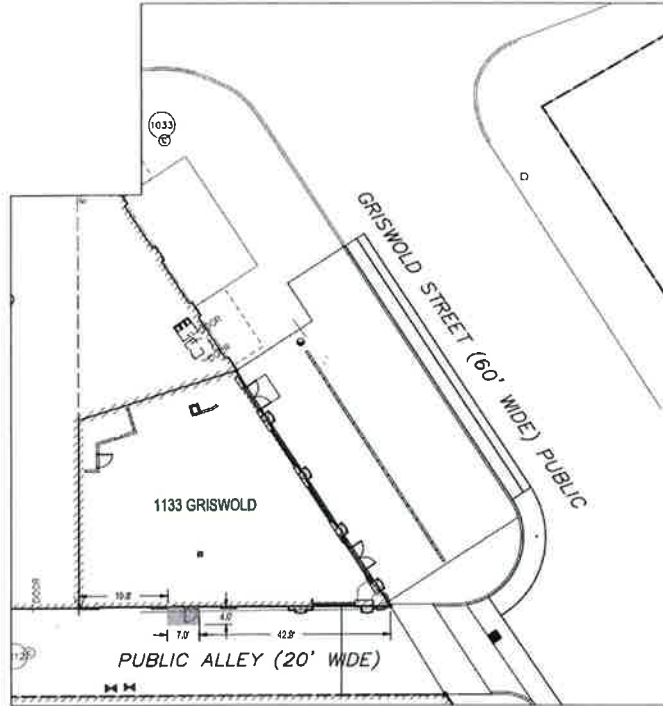
Respectfully,

Ana Navarrete
Project Manager
Giffels Webster



CITY OF DETROIT
DEPARTMENT OF PUBLIC WORKS
CITY ENGINEERING DIVISION

COLEMAN A. YOUNG MUNICIPAL CENTER
2 WOODWARD AVE. SUITE 601
DETROIT, MICHIGAN 48226
PHONE: (313) 224-3949 TTY: 711
WWW.DETROITMI.GOV



PROPOSED ENCROACHMENT FOR OUT SWINGING DOORS INTO THE PUBLIC ALLEY
RIGHT OF WAY, ENCROACHMENT FROM 0'-0" TO 10'-0" ABOVE GRADE.

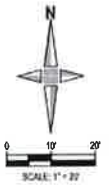


EXHIBIT A - ALLEY DOOR
2026-03-16



**CITY OF DETROIT
DEPARTMENT OF PUBLIC WORKS
CITY ENGINEERING DIVISION**

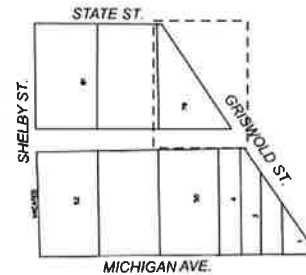
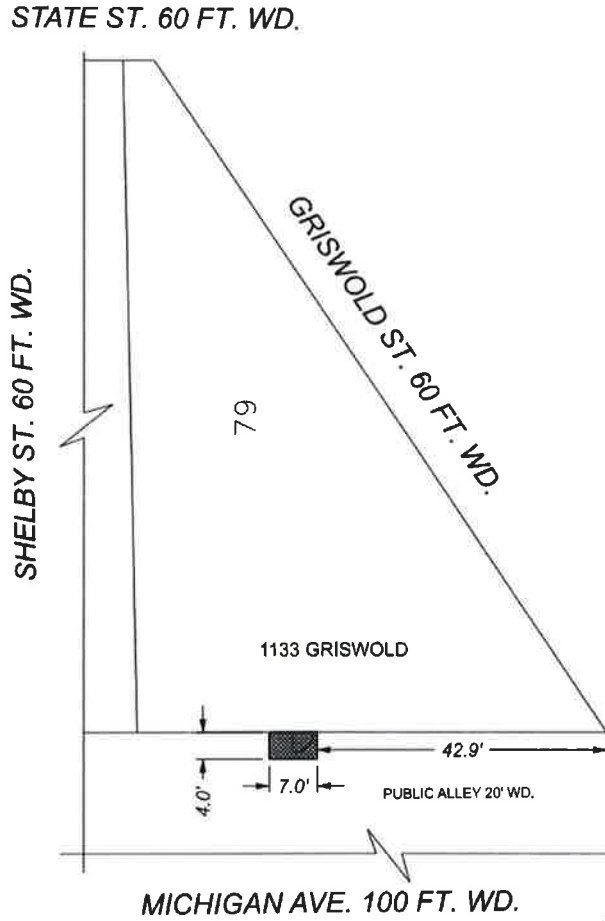
**COLEMAN A. YOUNG MUNICIPAL CENTER
2 WOODWARD AVE. SUITE 601
DETROIT, MICHIGAN 48226
PHONE: (313) 224-3949 TTY: 711
WWW.DETROITMI.GOV**



CITY OF DETROIT
DEPARTMENT OF PUBLIC WORKS
CITY ENGINEERING DIVISION

COLEMAN A. YOUNG MUNICIPAL CENTER
2 WOODWARD AVE. SUITE 601
DETROIT, MICHIGAN 48226
PHONE: (313) 224-3949 TTY: 711
WWW.DETROITMI.GOV

MAP-26-25



 - REQUEST ENCROACHMENT
 (FOR OUT SWINGING DOORS)

(FOR OFFICE USE ONLY)

CARTO 28 B

DRAWN BY	LC
DATE	3/25/2026
CHECKED	AP
APPROVED	GE

**REQUEST ENCROACHMENT INTO
 THE EAST/WEST ALLEY BOUNDED BY
 GRISWOLD ST., STATE ST., SHELBY ST.,
 AND MICHIGAN AVE. AT
 1133 GRISWOLD**

CITY OF DETROIT
CITY ENGINEERING DIVISION
MAPS & RECORDS BUREAU

JOB NO. 26-25

DRWG. NO.



**CITY OF DETROIT
DEPARTMENT OF PUBLIC WORKS
CITY ENGINEERING DIVISION**

**COLEMAN A. YOUNG MUNICIPAL CENTER
2 WOODWARD AVE. SUITE 601
DETROIT, MICHIGAN 48226
PHONE: (313) 224-3949 TTY: 711
WWW.DETROITMI.GOV**
