



CITY OF DETROIT
DEPARTMENT OF PUBLIC WORKS
CITY ENGINEERING DIVISION

COLEMAN A. YOUNG MUNICIPAL CENTER
2 WOODWARD AVE. SUITE 601
DETROIT, MICHIGAN 48226
PHONE: (313) 224-3949 TTY: 711
WWW.DETROITMI.GOV

To: Clerk's Office
From: The Department of Public Works
City Engineering Division
MapsandRecordsBureau@DetroitMI.Gov
(313) 224-3970

Petitioner:
Detroit & Northern, LLC
401 S Washington Sq., Ste 102
Lansing, MI 48933

On behalf of the above-mentioned petitioner the Department of Public Works: City Engineering Division is submitting a petition request for the below mentioned action. The petitioner has received a project consultation from the Department of Public Works: City Engineering Division and has been advised the following:

Type of action recommended:

Petition to request for several encroachments within the easterly part of Griswold St. and the northerly part of the east-west public alley adjacent to the parcel commonly known as 1133 Griswold St. for out-swinging doors, a concrete sidewalk with non-standard slope and an existing concrete curb. This is also to advise of the removal of the below-grade storm pipe approved on Petition No. x2024-264 approved on 9/17/2024.

Georgine Gersdorff
Manager II
Department of Public Works
City Engineering Division
313-224-3985



CITY OF DETROIT
DEPARTMENT OF PUBLIC WORKS
CITY ENGINEERING DIVISION

COLEMAN A. YOUNG MUNICIPAL CENTER
2 WOODWARD AVE. SUITE 601
DETROIT, MICHIGAN 48226
PHONE: (313) 224-3949 TTY: 711
WWW.DETROITMI.GOV



December 08, 2025

Honorable Detroit City Council
C/o Detroit City Clerk
200 Coleman A. Young Municipal Center
2 Woodward Avenue
Detroit, Michigan 48226

RE: Giffels Webster - Petition requesting revision to encroachment x2024-264.

Giffels Webster, 28 W. Adams, Suite 1200, Detroit, Michigan 48226 on behalf of Detroit & Northern LLC, 401 S Washington sq. Suite 102, Lansing, Michigan respectfully requests the following revision to encroachment x2024-264 in the public rights-of-way of the block bounded by Griswold Street, Michigan Avenue, State Street, Washington Boulevard:

- Proposed at grade encroachment for non-standard pavement slopes in the Griswold Street right-of-way. Limits of the encroachment can be found on the attached exhibit.
- Remove below grade encroachment for a storm pipe in the Griswold Street right-of-way. Limits of the encroachment to be removed can be found on the attached exhibit.

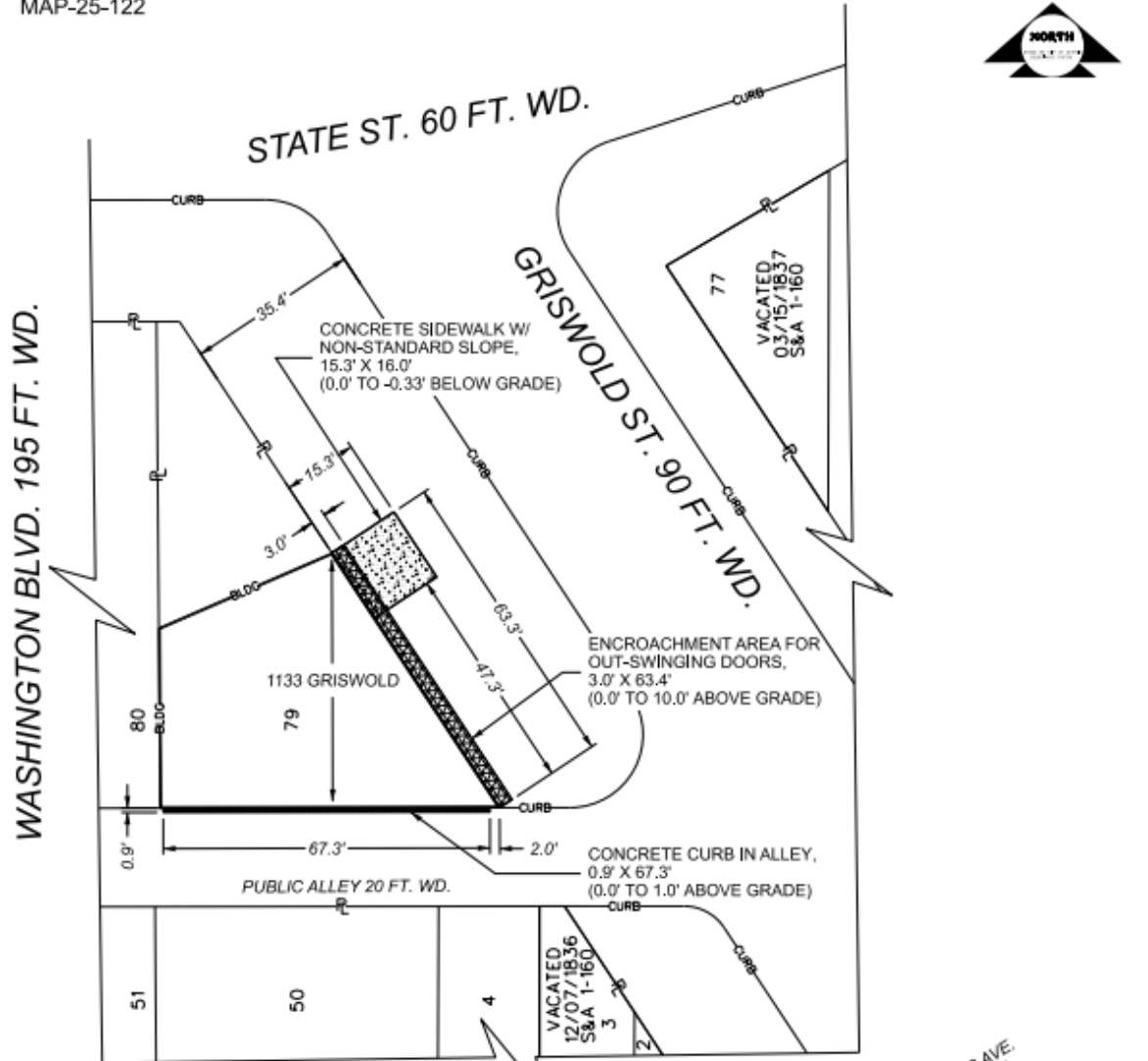
If you should have any questions, please do not hesitate to contact me at (P) 313.962.4442 (M) 313.980.1469 or at mmarks@giffelswebster.com.

Respectfully,

Michael Marks, PE
Treasurer | Partner
Giffels Webster



MAP-25-122



MICHIGAN AVE. (US-12) 100 FT. WD.

- REQUEST ENCROACHMENT (FOR CONCRETE CURB)
- REQUEST ENCROACHMENT (FOR OUT-SWINGING DOORS)
- REQUEST ENCROACHMENT (FOR NON-STANDARD PAVEMENT)



(FOR OFFICE USE ONLY)

DRAWN BY	TS	REQUEST ENCROACHMENT INTO GRISWOLD ST. AND THE E/W PUBLIC ALLEY BETWEEN MICHIGAN AVE., STATE ST, SHELBY ST., AND GRISWOLD ST.	CITY OF DETROIT
DATE	02/04/2026		CITY ENGINEERING DIVISION MAPS & RECORDS BUREAU
CHECKED	AP/LC		JOB NO. 25-122
APPROVED	GE		DRWG. NO.

CARTO 28 B