

MAP-25-63

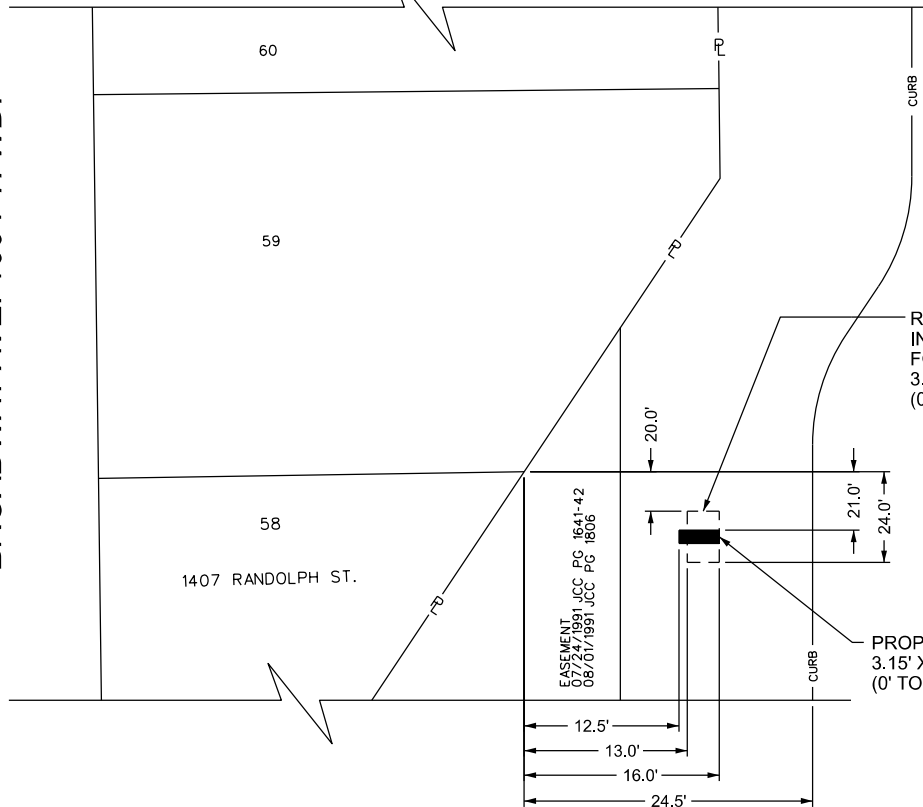
E. GRAND RIVER AVE. 60 FT. WD.

BROADWAY AVE. 100 FT. WD.

CENTER ST. 60 FT. WD.

RANDOLPH ST. 48 FT. WD.

GRATIOT AVE. 120 FT. WD.



REMOVE EX. PLA LIGHT FOUNDATION
 INSTALL PROPOSED SPREAD
 FOOTING WITH PIER
 3.0' X 5.0' X 5.0'
 (0' TO 5.0' BELOW GRADE)

PROPOSED IKE KIOSK
 3.15' X 8.25' X 1.04'
 (0' TO 8.25' ABOVE GRADE)

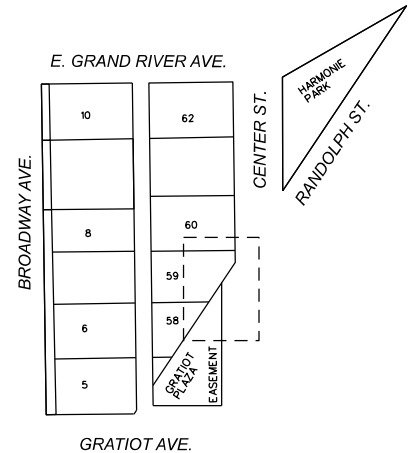
EASEMENT
 07/24/1991 JCC PG 1641-42
 08/01/1991 JCC PG 1806

1407 RANDOLPH ST.

- REQUEST ENCROACHMENT
 (FOR FOOTING)

- REQUEST ENCROACHMENT
 (FOR IKE KIOSK)

(FOR OFFICE USE ONLY)



CARTO 28 A

DRAWN BY	AP
DATE	02/16/2026
CHECKED	LC/TS
APPROVED	GE

**REQUEST ENCROACHMENT INTO
 RANDOLPH ST. BETWEEN
 E. GRAND RIVER AVE. AND GRATIOT AVE.**

**CITY OF DETROIT
 CITY ENGINEERING DIVISION
 MAPS & RECORDS BUREAU**

JOB NO. 25-63

DRWG. NO. 065