

Janice M. Winfrey
City Clerk

City of Detroit
OFFICE OF THE CITY CLERK

Andre P. Gilbert II
Deputy City Clerk

DEPARTMENT PETITION REFERENCE COMMUNICATION

To: The Department or Commission Listed Below

From: Janice M Winfrey, Detroit City Clerk

The following petition is herewith referred to you for report and recommendation to the City Council.

In accordance with that body's directive, kindly return the same with your report in duplicate within four (4) weeks.

Petition No.	2026-031
Name of Petitioner	Rock Economic Development Group
Description of Petition	Petition to request encroachments within the westerly part of St. Antoine St. Adjacent to the parcel commonly known as 580 Clinton Ave. for existing tree grates and decorative pavers.
Type of Petition	Alley Vacation/Encroachment/Utility Vacation
Submission Date	02/26/26
Concerned Departments	Buildings, Safety Engineering, and Environmental Department (BSEED), Detroit Department of Transportation (DDOT), Detroit Fire Department (DFD), Detroit Health Department (DHD), General Services Department (GSD), Media Services Department, Municipal Parking Department, Police Department (DPD)
Petitioner Contact	Mark Luckhardt Rock Economic Development Group 630 Woodward Ave. Detroit, MI 48226 510.609.5639 markluckhardt@bedrockdetroit.com



**CITY OF DETROIT
DEPARTMENT OF PUBLIC WORKS
CITY ENGINEERING DIVISION**

**COLEMAN A. YOUNG MUNICIPAL CENTER
2 WOODWARD AVE. SUITE 601
DETROIT, MICHIGAN 48226
PHONE: (313) 224-3949 TTY: 711
WWW.DETROITMI.GOV**

To: Clerk's Office
From: The Department of Public Works
City Engineering Division
MapsandRecordsBureau@DetroitMI.Gov
(313) 224-3970

Petitioner:
Rock Economic Development Group
630 Woodward Ave.
Detroit, MI 48226

On behalf of the above-mentioned petitioner the Department of Public Works: City Engineering Division is submitting a petition request for the below mentioned action. The petitioner has received a project consultation from the Department of Public Works: City Engineering Division and has been advised the following:

Type of action recommended:

Petition to request encroachments within the westerly part of St. Antoine St. Adjacent to the parcel commonly known as 580 Clinton Ave. for existing tree grates and decorative pavers.

Georgine Gersdorff
Manager II
Department of Public Works
City Engineering Division
313-224-3985



CITY OF DETROIT
DEPARTMENT OF PUBLIC WORKS
CITY ENGINEERING DIVISION

COLEMAN A. YOUNG MUNICIPAL CENTER
2 WOODWARD AVE, SUITE 601
DETROIT, MICHIGAN 48226
PHONE: (313) 224-3949 TTY: 711
WWW.DETROITMI.GOV



Rock Economic Development Group

630 Woodward Ave

Detroit, MI 48226

510.609.5639

markluckhardt@bedrockdetroit.com

Date: October 1, 2025

To: City of Detroit – Maps and Records Department, 1 Woodward, 6th Floor, Detroit, MI 48226

Re: Application for Encroachment Permit – Tree Planting in Public Right-of-Way

Dear Permit Review Committee,

This letter serves as a formal Letter of Intent to request approval for an Encroachment Permit for trees planted in the public right-of-way adjacent to 570 Clinton St, Detroit, MI 48226 [Parcel ID Number 03000240-1, aka 580 Clinton St].

Encroachment Description

In October of 2024, Rock Economic Development Group took ownership of the Division 1 County Jail located at 570 Clinton St. Adjacent to that property, there are nine (9) existing tree grates with three (3) trees that occupy the public right-of-way (see attached site plan)

We are requesting to retain these trees and enter into a new encroachment permit with the city of Detroit as the new owners of the adjacent property.

We respectfully request your review and guidance regarding permit requirements, fees, and any additional documentation needed to move forward.

Thank you for your time and consideration. Please feel free to contact me at the phone or email listed above if you require additional information or documentation.

Sincerely,

Mark Luckhardt

SVP, Land Development

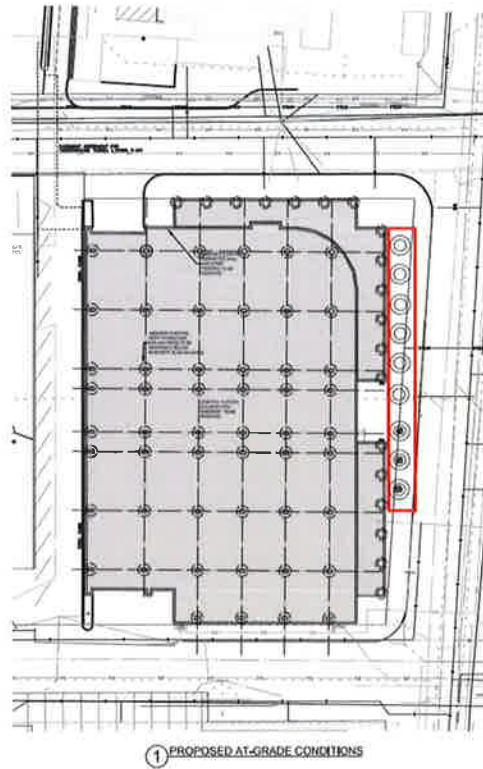
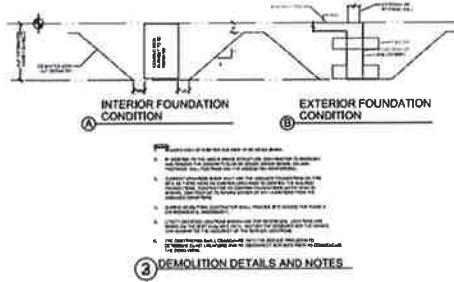
630 Woodward Ave
Detroit, MI 48226

BedrockDetroit.com



CITY OF DETROIT
DEPARTMENT OF PUBLIC WORKS
CITY ENGINEERING DIVISION

COLEMAN A. YOUNG MUNICIPAL CENTER
2 WOODWARD AVE. SUITE 601
DETROIT, MICHIGAN 48226
PHONE: (313) 224-3949 TTY: 711
WWW.DETROITMI.GOV



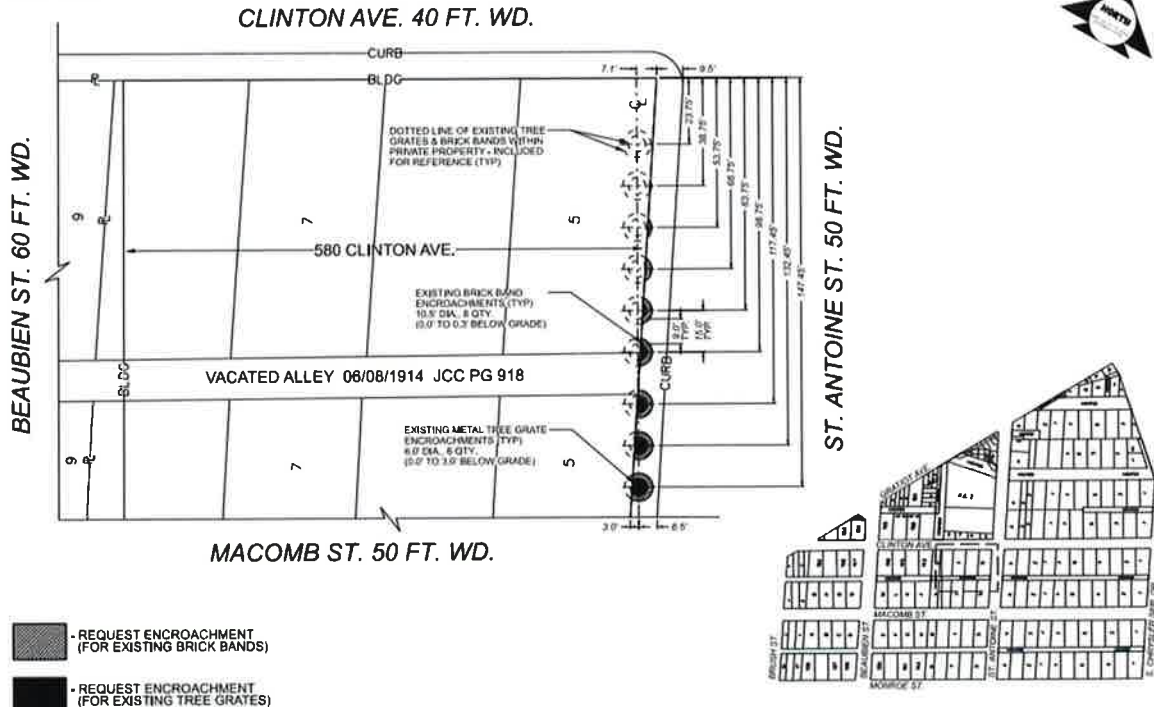
DRAWN BY: J. B. BROWN, P.E. & T. J. CLAYTON, P.E. DETROIT, MICHIGAN	
PROPOSED CONDITIONS - PARCEL D	
DATE	04/22/14
SCALE	AS SHOWN
PROJECT	COLEMAN A. YOUNG MUNICIPAL CENTER
NO.	001



CITY OF DETROIT
DEPARTMENT OF PUBLIC WORKS
CITY ENGINEERING DIVISION

COLEMAN A. YOUNG MUNICIPAL CENTER
2 WOODWARD AVE. SUITE 601
DETROIT, MICHIGAN 48226
PHONE: (313) 224-3949 TTY: 711
WWW.DETROITMI.GOV

MAP-25-95



- REQUEST ENCROACHMENT (FOR EXISTING BRICK BANDS)
- REQUEST ENCROACHMENT (FOR EXISTING TREE GRATES)

(FOR OFFICE USE ONLY)

CARTO 28 A

DRAWN BY	TS
DATE	10/10/2025
CHECKED	AP/LC
APPROVED	GE

**REQUEST ENCROACHMENTS
 INTO ST. ANTOINE ST.
 BETWEEN CLINTON AVE. AND MACOMB ST.
 AT 580 CLINTON AVE.**

CITY OF DETROIT CITY ENGINEERING DIVISION MAPS & RECORDS BUREAU	
JOB NO.	25-95
DRWG. NO.	