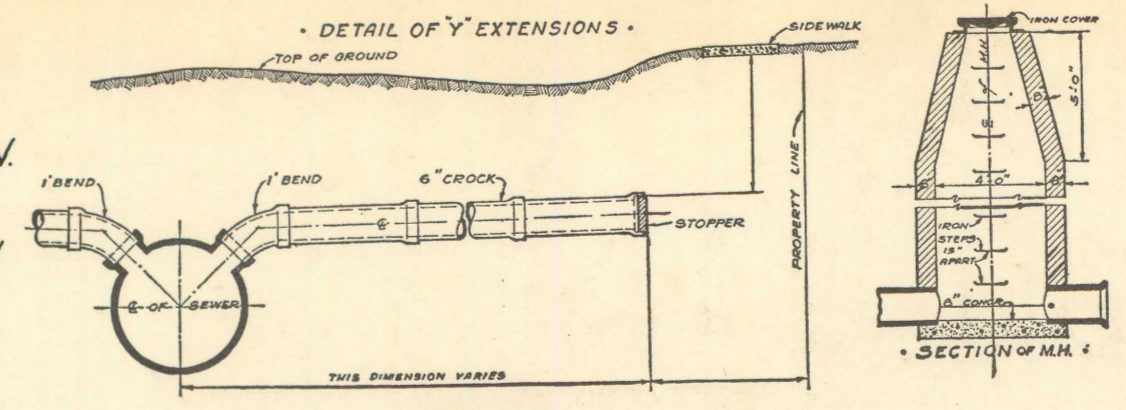


LATERAL SEWER IN STREET

IN AMITY FROM McCLELLAN TO ALLEY EAST OF McCLELLAN.
 TOTAL LENGTH OF SEWER 158.50 FT. M. OR L. { 1 Bend
 " " " 15" PIPE 158.50 " " " { 1 slant
 ONE MANHOLE WITH 14 IRON STEPS.

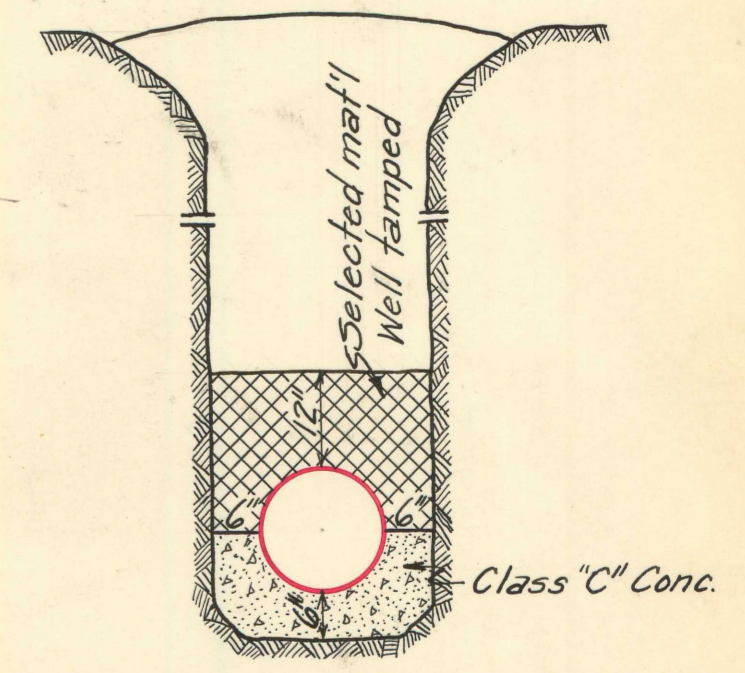
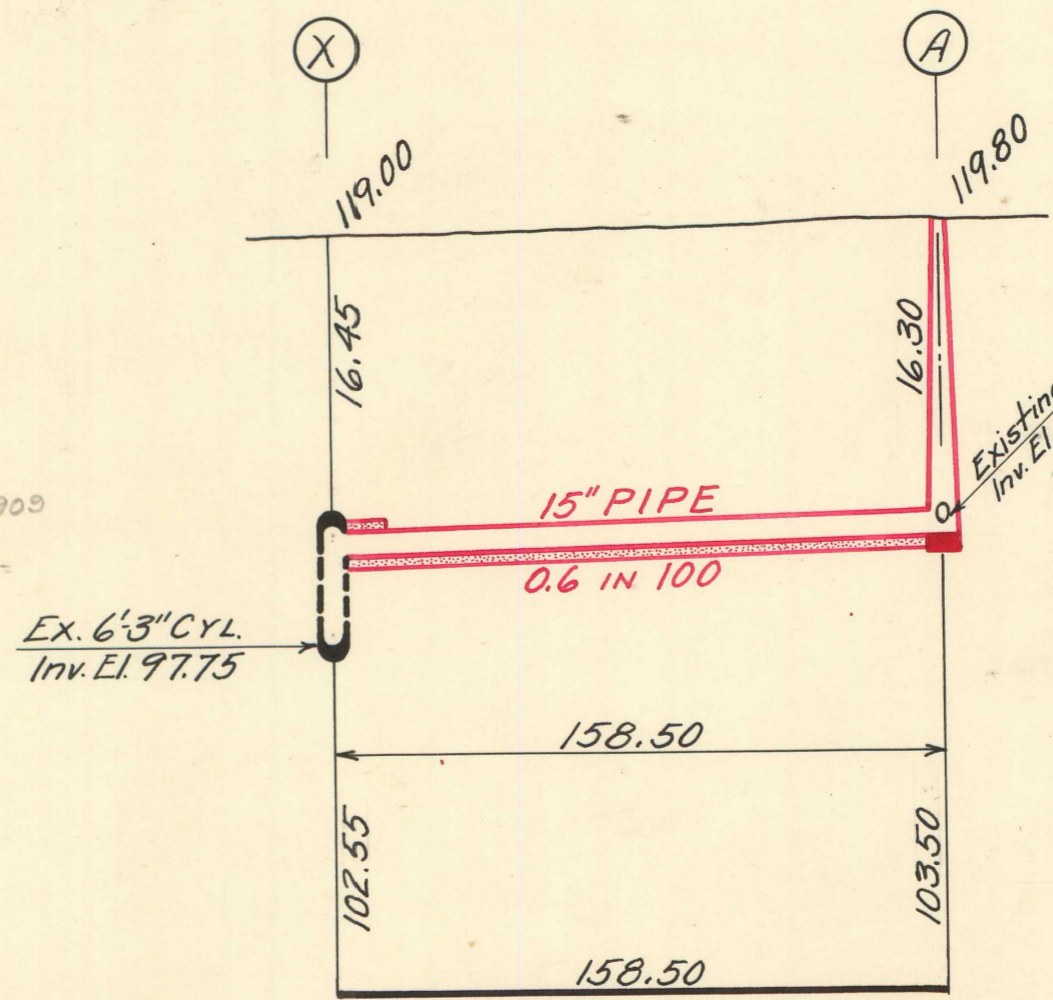
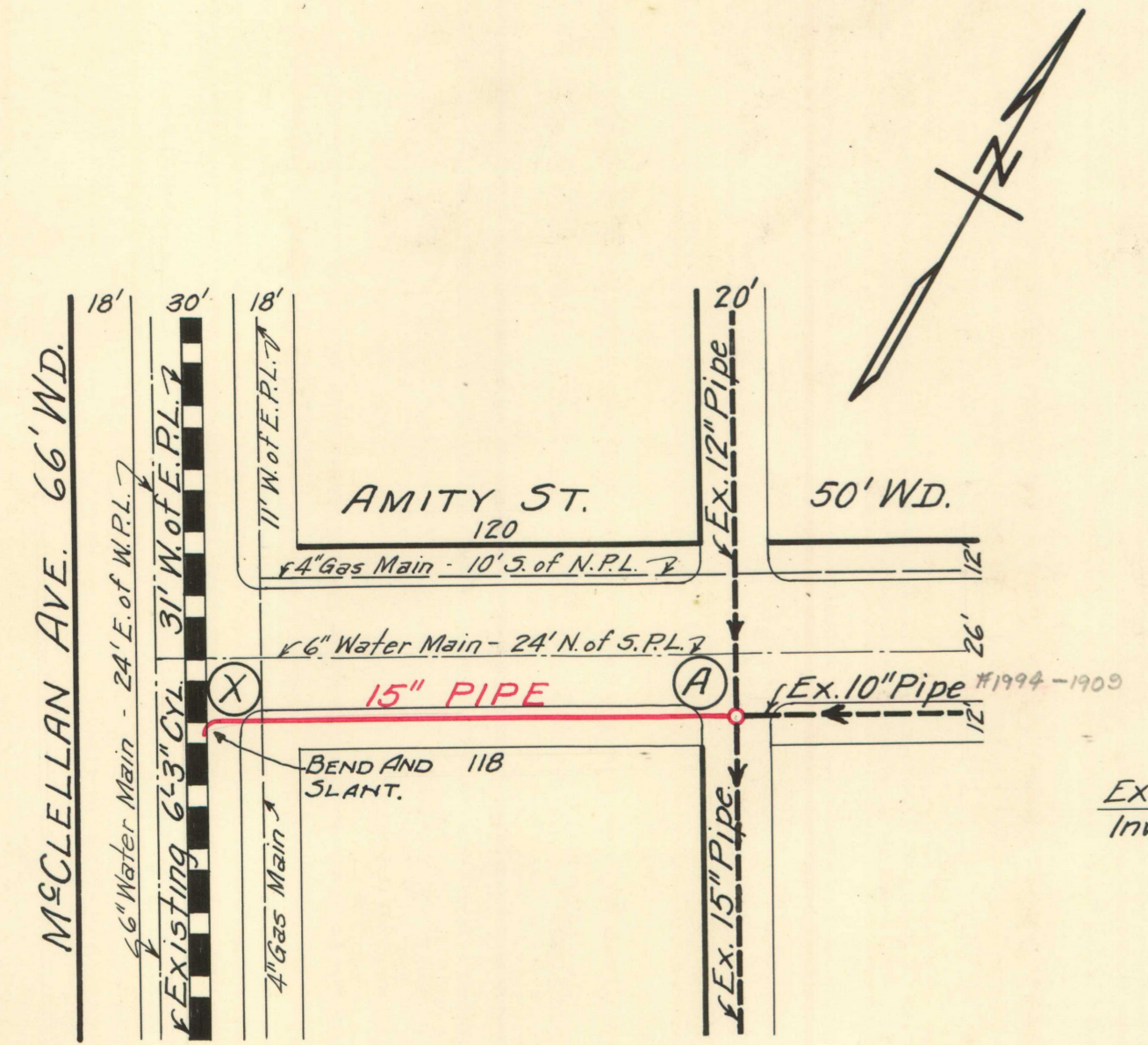


DEPARTMENT OF PUBLIC WORKS
 CITY ENGINEER'S OFFICE
 DETROIT, MICH.

SEWER No. 5759
 ROLL No. W.P.A.

PETITION No. _____ DATE _____
 RESOLUTION _____ BIDS OPENED _____
 CONTRACT CONF'D _____ COMPLETED _____
 TIME LIMIT _____
 CONT'R _____ PRICE _____
 B. M. _____

46597



METHOD OF LAYING PIPE IN OPEN CUT
 SEWER TO BE BUILT IN TUNNEL UNDER PAVEMENT IN McCLELLAN AVE. AND BACKFILLED WITH CLASS "C" CONCRETE.

NOTE--Contractor to furnish and set as markers for all connections 1/2 inch iron rods 2 feet long with 3 inch tile collar 6 inches long.

IMPORTANT NOTICE:—The location of all public utilities are taken from best available data: City is not responsible for variations from locations shown. Sidewalks, pavements, and other existing surface and underground public utilities, whether shown on drawings or not, must be adequately protected, and when damaged the contractor must restore them to their original status. Water mains and water service pipes if damaged, are to be repaired in a manner to meet the requirements of the Water Board. Sewer is to be built in tunnel under pavement, and backfilled with Class "C" concrete. Each bidder is expected to make his estimates of the facilities and difficulties attending the execution of the work, to do all necessary pumping and build or remove bulkheads when directed by City Engineer. All above costs to be borne by Contractors.

BOOKED BY M.E. MORNINGSIDES, 6-4-36, PAGE 55.

SCALE	VERTICAL 1"=10'	DRAWN	N.	CHECK	C.A.W.
	HORIZONTAL 1"=50'	TRACED	J.C.	NOTE BOOK	Paving Map.