



CITY OF DETROIT
DEPARTMENT OF PUBLIC WORKS
CITY ENGINEERING DIVISION

COLEMAN A. YOUNG MUNICIPAL CENTER
2 WOODWARD AVE. SUITE 601
DETROIT, MICHIGAN 48226
PHONE: (313) 224-3949 TTY: 711
WWW.DETROITMI.GOV

To: Clerk's Office
From: The Department of Public Works
City Engineering Division
MapsandRecordsBureau@DetroitMI.Gov
(313) 224-3970

Petitioner:
Category C Parcels Purchaser LLC
18633 Mack Ave.
Detroit, MI 48236

On behalf of the above-mentioned petitioner the Department of Public Works: City Engineering Division is submitting a petition request for the below mentioned action. The petitioner has received a project consultation from the Department of Public Works: City Engineering Division and has been advised the following:

Type of action recommended:

Petition to request the Outright Vacation of part of the 8.0' wide north-south public alley adjacent to the property commonly known as 2111 Parkview Ave. and the vacation with the reservation of a utility easement part of the 18.82' wide north-south public alley adjacent to the property commonly known as 2111 Parkview Ave.

Georgine Gersdorff
Manager II
Department of Public Works
City Engineering Division
313-224-3985



CITY OF DETROIT
DEPARTMENT OF PUBLIC WORKS
CITY ENGINEERING DIVISION

COLEMAN A. YOUNG MUNICIPAL CENTER
2 WOODWARD AVE. SUITE 601
DETROIT, MICHIGAN 48226
PHONE: (313) 224-3949 TTY: 711
WWW.DETROITMI.GOV



July 11, 2025

Honorable Detroit City Council
c/o Detroit City Clerk
2 Woodward Avenue
200 Coleman A. Young Municipal Center
Detroit, MI 48226

RE: 2111 Parkview Alley Vacations

Project Name: 9301 Kercheval Alley Vacation
Project No.: 20140.23D

Giffels Webster, 28 W. Adams, Suite 1200, Detroit, Michigan 48226 on behalf of Category C Parcels Purchaser, LLC, respectfully requests the following vacations within the block bound by Kercheval Avenue (80 feet wide), Parkview Avenue (60 feet wide), Amity Avenue (50 feet wide) and McClellan Street (66 feet wide).

- Vacation with easement of the 18.82-foot-wide public alley within the block bounded by Kercheval Avenue (80 feet wide), Parkview Avenue (60 feet wide), Amity Avenue (50 feet wide) and McClellan Street (66 feet wide), abutting Lot 7 and the southerly 9 feet of Lot 8, all inclusive of Yeman's and Sprague's Subdivision of part of P.C. 152 lying north of Jefferson Avenue, Hamtramck, Michigan, and recorded in Liber 13, Page 11, Plats, Wayne County Records.
- Outright vacation of the 8-foot-wide public alley within the block bounded by Kercheval Avenue (80 feet wide), Parkview Avenue (60 feet wide), Amity Avenue (50 feet wide) and McClellan Street (66 feet wide), beginning at the northern Kercheval Avenue right-of-way and extending 42.10 feet north.

See attached exhibit for further clarification. Giffels Webster has been asked to facilitate the requested vacations. We will be working with the City of Detroit's Department of Public Works – City Engineering Division, and all stakeholders, to achieve vacations that are satisfactory to all interested parties.

The requested vacation will neither impede pedestrian and vehicular traffic, nor will it interfere with the maintenance of the public rights-of-way, including utility companies, and Fire and Police Departments access.

If you should have any questions, please do not hesitate to contact Michael Darga by phone, at 313.962.4442 or by email at mdarga@giffelswebster.com.

Respectfully

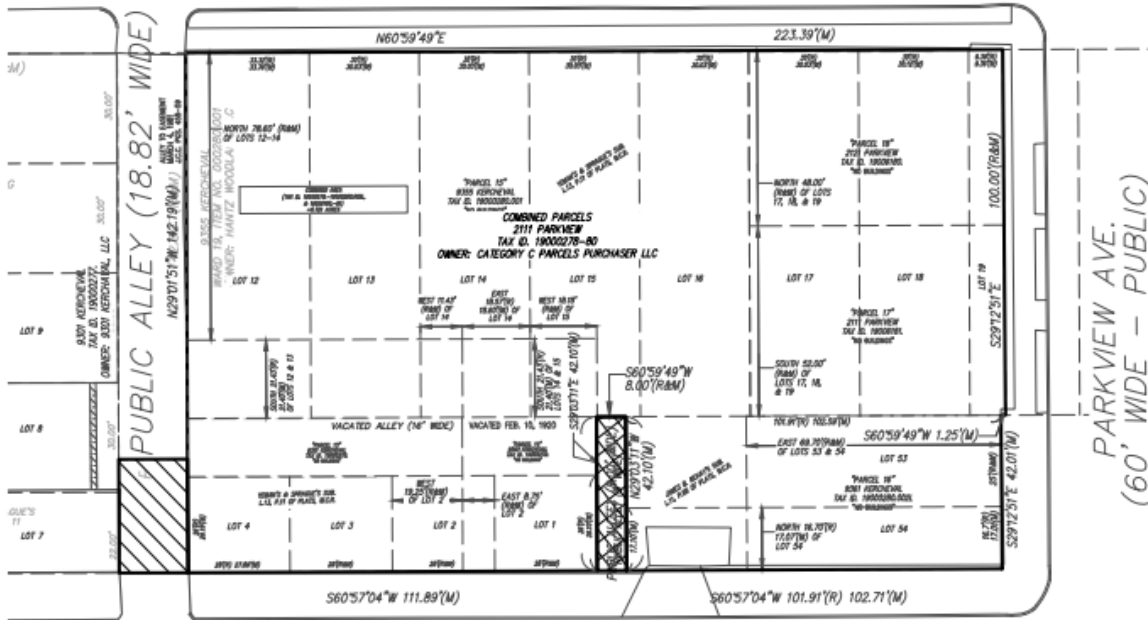
GIFFELS WEBSTER


Michael G. Darga, PE
Partner




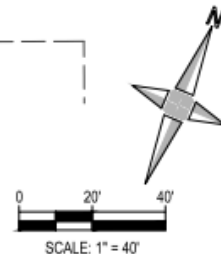
CITY OF DETROIT
DEPARTMENT OF PUBLIC WORKS
CITY ENGINEERING DIVISION

COLEMAN A. YOUNG MUNICIPAL CENTER
2 WOODWARD AVE. SUITE 601
DETROIT, MICHIGAN 48226
PHONE: (313) 224-3949 TTY: 711
WWW.DETROITMI.GOV



 PROPOSED ALLEY VACATION WITH EASEMENT

 PROPOSED OUTRIGHT VACATION





CITY OF DETROIT
 DEPARTMENT OF PUBLIC WORKS
 CITY ENGINEERING DIVISION

COLEMAN A. YOUNG MUNICIPAL CENTER
 2 WOODWARD AVE. SUITE 601
 DETROIT, MICHIGAN 48226
 PHONE: (313) 224-3949 TTY: 711
 WWW.DETROITMI.GOV

