

# City of Detroit

Janice M. Winfrey  
City Clerk

OFFICE OF THE CITY CLERK

Andre P. Gilbert II  
Deputy City Clerk

## DEPARTMENT PETITION REFERENCE COMMUNICATION

*To: The Department or Commission Listed Below*

*From: Janice M Winfrey, Detroit City Clerk*

---

The following petition is herewith referred to you for report and recommendation to the City Council.

In accordance with that body's directive, kindly return the same with your report in duplicate within four (4) weeks.

---

Petition No.	2026-021
Name of Petitioner	Wayne State University
Description of Petition	Petition to request Encroachment of Pedestrian Bridge across the Right-of-Way at E. Canfield Street.
Type of Petition	<b>Alley Vacation/Encroachment/Utility Vacation</b>
Submission Date	02/17/26
Concerned Departments	Media Services, Building & Safety Engineering, Police Department, Fire Department, Municipal Parking Department, Transportation Department, Health Department, General Services Department
Petitioner Contact	Kate Bond 119 State St. Suite 500 Detroit, MI 48202 (Ph) 313-305-9120 <a href="mailto:kbond@sda-eng.com">kbond@sda-eng.com</a>



**CITY OF DETROIT  
DEPARTMENT OF PUBLIC WORKS  
CITY ENGINEERING DIVISION**

**COLEMAN A. YOUNG MUNICIPAL CENTER  
2 WOODWARD AVE. SUITE 601  
DETROIT, MICHIGAN 48226  
PHONE: (313) 224-3949 TTY: 711  
WWW.DETROITMI.GOV**

---

To: Clerk's Office  
From: The Department of Public Works  
City Engineering Division  
MapsandRecordsBureau@DetroitMI.Gov  
(313) 224-3970

Petitioner:  
Wayne State University  
429 E. Canfield St.  
Detroit, MI, 48202

On behalf of the above-mentioned petitioner the Department of Public Works: City Engineering Division is submitting a petition request for the action below. The petitioner has received a project consultation from the Department of Public Works: City Engineering Division and has been advised the following:

Type of action recommended:

Wayne State University is proposing the construction of a new Health Sciences Research Building at 429 E. Canfield St. As part of this project, a connecting bridge is planned to link the new facility with the existing Scott Hall building. This application pertains to the proposed encroachment related to the construction of that bridge

Raven Wright  
Supervisor of Maps & Records  
Department of Public Works  
City Engineering Division  
313-224-3985



CITY OF DETROIT  
DEPARTMENT OF PUBLIC WORKS  
CITY ENGINEERING DIVISION

COLEMAN A. YOUNG MUNICIPAL CENTER  
2 WOODWARD AVE. SUITE 601  
DETROIT, MICHIGAN 48226  
PHONE: (313) 224-3949 TTY: 711  
WWW.DETROITMI.GOV

## SPALDING DeDECKER

May 23, 2025  
Honorable City Council of the City of Detroit  
Office of the City Clerk  
Room 200  
Coleman A. Young Municipal Center  
2 Woodward Avenue, Suite 601  
Detroit, Michigan 48226

**Subject:**  
Petition for Encroachment of Pedestrian Bridge across the Right-of-Way at E. Canfield Street

Honorable City Clerk:

On behalf of the property owner at 545 E. Canfield Street, currently under development as an Educational Research Center, we are writing to bring to request an encroachment into the City of Detroit Right-Of-Way.

A bridge will be constructed extending from Level 3 of the proposed building to the Level 3 of the existing Scott Hall located at 540 E Canfield St. This bridge will encroach upon the Canfield Right-Of-Way 60' in length and 16' in width, and no columns will be placed within the Right-Of-Way. The bridge will have a clearance of 30 feet from the road surface, and its structural height will be 18'8".

We have included an exhibit that highlights the dimensions of this proposed encroachment. (attached). The construction of this bridge is necessary to ensure smooth connectivity and flow between the two areas of the building campus.

Considering this, we respectfully request your approval for this encroachment to allow the construction of the bridge as part of the proposed site plan. Thank you for your time and consideration in this matter.

Should you have any questions or concerns, please do not hesitate to contact Kate Bond at 313-305-9120 or via email at [kbond@sda-eng.com](mailto:kbond@sda-eng.com)

Sincerely,



Kate Bond

Encl: Encroachment Exhibit



**CITY OF DETROIT  
DEPARTMENT OF PUBLIC WORKS  
CITY ENGINEERING DIVISION**

**COLEMAN A. YOUNG MUNICIPAL CENTER  
2 WOODWARD AVE. SUITE 601  
DETROIT, MICHIGAN 48226  
PHONE: (313) 224-3949 TTY: 711  
WWW.DETROITMI.GOV**

---

### **Health Sciences Research Building Pedestrian Bridge**

Wayne State University is creating a nationally recognized health sciences research building that will support the School of Medicine with the creation of world-class academic, research, and community engagement spaces. From the start, this project has sought to build on WSU's partnership and inextricable links to Detroit by fostering seamless connections across the campus and within the city. With a goal of making research visible, accessible, and participatory - the site is designed to be inclusive and accessible to all. Here, a sense of community and excitement is being created with a welcoming site that includes activated spaces and places for respite. The theme of science on display has guided decisions about everything from living lab raingardens to the building's prioritized fenestration and material composition. Rooms for community use such as a tech center and multi-purpose meeting rooms have been strategically located to have visual and physical connection to outdoor spaces.

Street level pedestrian experiences will be strengthened with a new landscaped streetscape, paths, gathering areas, and raingardens for stormwater management. A HAWK pedestrian passage across E. Canfield to the Medical campus at ground level currently exists just West of the parking structure entry drive. Additional and/or adjusted crossing locations have been considered by WSU and the design team. A MOGO station is under review for incorporation at a future date.

The pedestrian bridge is a critical connector to shared lab functions located in Elliman and Scott Hall, allowing the new building to provide state-of-the-art facilities and equipment without unnecessary redundancy. It also serves as a gateway to WSU and its medical and research hub. Care has been taken to create a visually compelling bridge that includes bird friendly fritted glass. Additionally, a gradient frit pattern on the glass from floor level (opaque) to eye level (transparent) is integral to the bridge design. Changeable graphics may be applied on the bridge face for WSU branding and messaging by using static window clings. Wood ceiling and linear lights create interest at the bridge underside, and an iconic W shaped structure supports the bridge at either end. Designed to achieve LEED certification, the bridge will also address sustainable practices for a healthy environment with minimized negative impacts on the built environment.

Images on the following pages illustrate the concepts outlined above.



**CITY OF DETROIT  
DEPARTMENT OF PUBLIC WORKS  
CITY ENGINEERING DIVISION**

**COLEMAN A. YOUNG MUNICIPAL CENTER  
2 WOODWARD AVE. SUITE 601  
DETROIT, MICHIGAN 48226  
PHONE: (313) 224-3949 TTY: 711  
[WWW.DETROITMI.GOV](http://WWW.DETROITMI.GOV)**

---

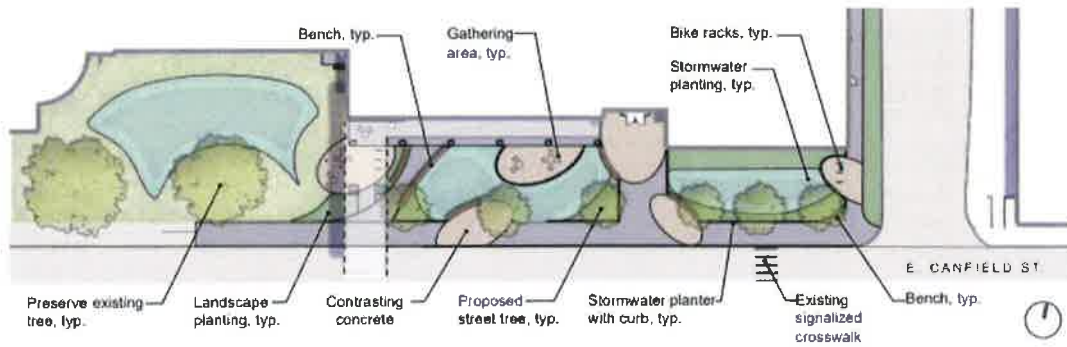


CITY OF DETROIT  
DEPARTMENT OF PUBLIC WORKS  
CITY ENGINEERING DIVISION

COLEMAN A. YOUNG MUNICIPAL CENTER  
2 WOODWARD AVE. SUITE 601  
DETROIT, MICHIGAN 48226  
PHONE: (313) 224-3949 TTY: 711  
WWW.DETROITMI.GOV



View from third floor of Scott Hall looking North



New Streetscape and Landscape at Building entry.



**CITY OF DETROIT  
DEPARTMENT OF PUBLIC WORKS  
CITY ENGINEERING DIVISION**

**COLEMAN A. YOUNG MUNICIPAL CENTER  
2 WOODWARD AVE. SUITE 601  
DETROIT, MICHIGAN 48226  
PHONE: (313) 224-3949 TTY: 711  
WWW.DETROITMI.GOV**



Approach from West on E. Canfield



View inside bridge walking toward new Research Building



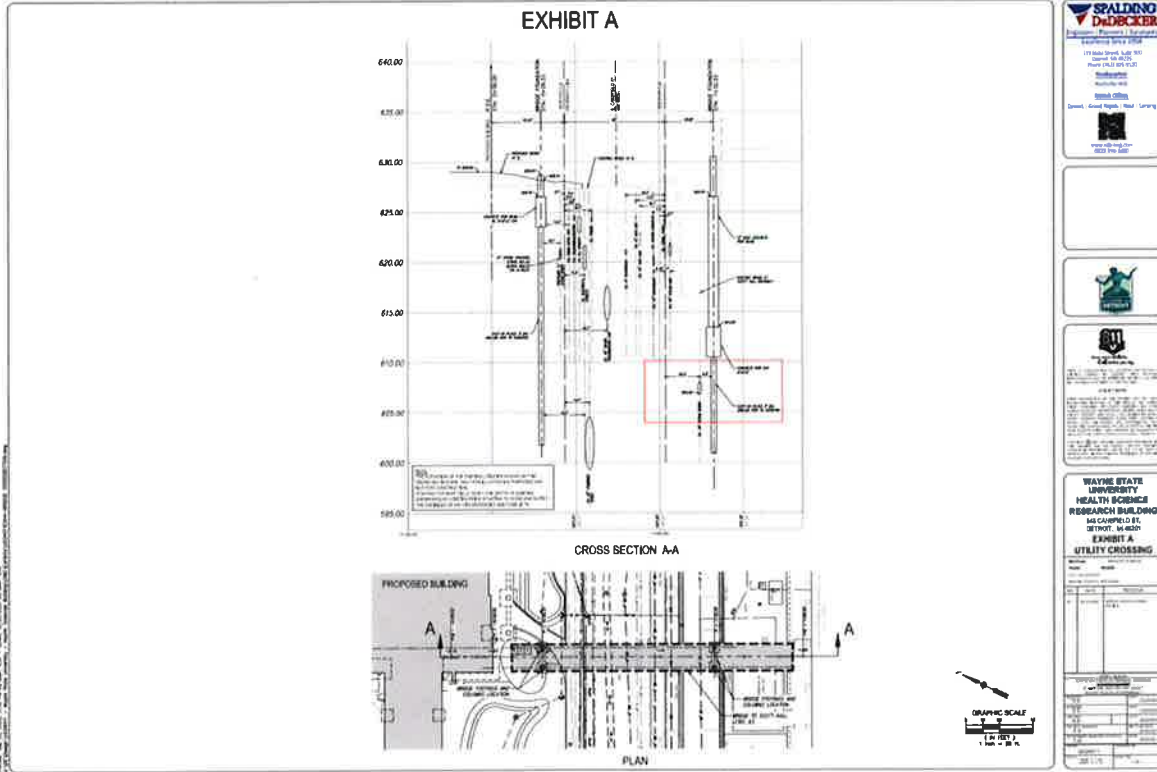






CITY OF DETROIT  
DEPARTMENT OF PUBLIC WORKS  
CITY ENGINEERING DIVISION

COLEMAN A. YOUNG MUNICIPAL CENTER  
2 WOODWARD AVE. SUITE 601  
DETROIT, MICHIGAN 48226  
PHONE: (313) 224-3949 TTY: 711  
WWW.DETROITMI.GOV



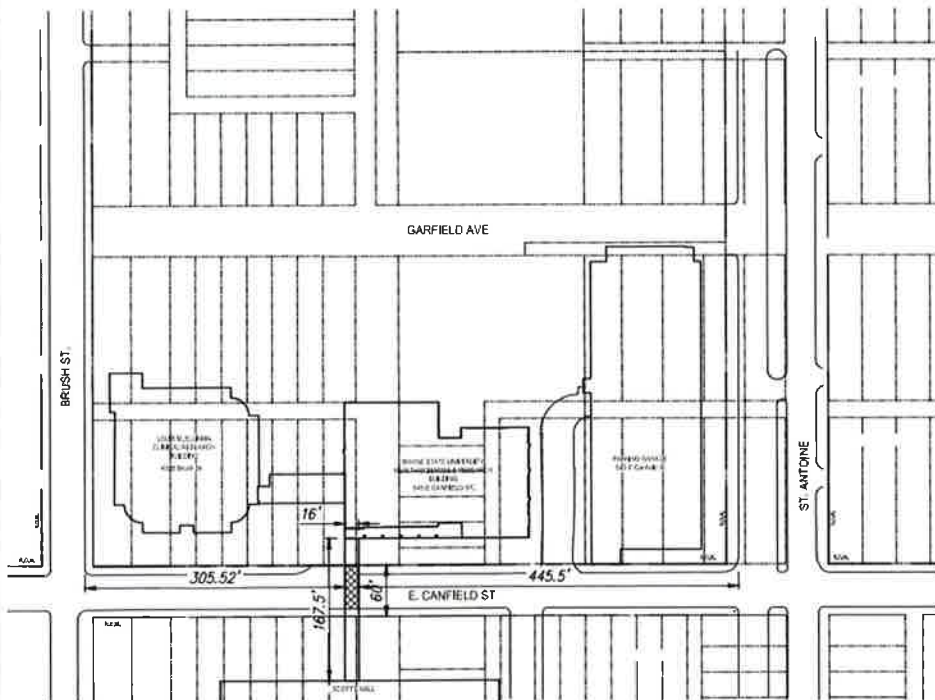


**CITY OF DETROIT**  
**DEPARTMENT OF PUBLIC WORKS**  
**CITY ENGINEERING DIVISION**


**COLEMAN A. YOUNG MUNICIPAL CENTER**  
**2 WOODWARD AVE. SUITE 601**  
**DETROIT, MICHIGAN 48226**  
**PHONE: (313) 224-3949 TTY: 711**  
**WWW.DETROITMI.GOV**

# EXHIBIT 1

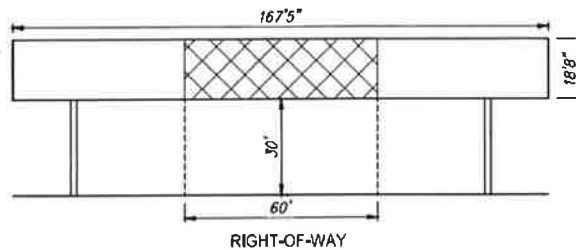
## BRIDGE ENCROACHMENT ON E CANFIELD ST



### LEGEND

 PROPOSED ENCROACHMENT

### CONCEPTUAL SECTION OF THE BRIDGE



ed: May 23, 2025, 12:53 PM by user: 1167 - Saved: 5/22/2025 by user: 1167  
 D:\Projects\UD24011 - Wayne State University - Health Sciences Building\DWG\Exhibits\UD24011EHPB-ROW - VACATION EXHIBIT.DWG



119 STATE ST., SUITE 500  
 Detroit, MI 48226  
 Phone (313) 305-9120



DRAWN: SN	DATE: 2025-05-23
CHECKED: KB	DATE: 2025-05-23
MANAGER: TDM	SCALE: 1" = 150'
JOB No. UD24011	SHEET: 1 OF 1
SECTION TOWN	NORTH RANGE EAST



**CITY OF DETROIT  
DEPARTMENT OF PUBLIC WORKS  
CITY ENGINEERING DIVISION**

**COLEMAN A. YOUNG MUNICIPAL CENTER  
2 WOODWARD AVE. SUITE 601  
DETROIT, MICHIGAN 48226  
PHONE: (313) 224-3949 TTY: 711  
[WWW.DETROITMI.GOV](http://WWW.DETROITMI.GOV)**

---