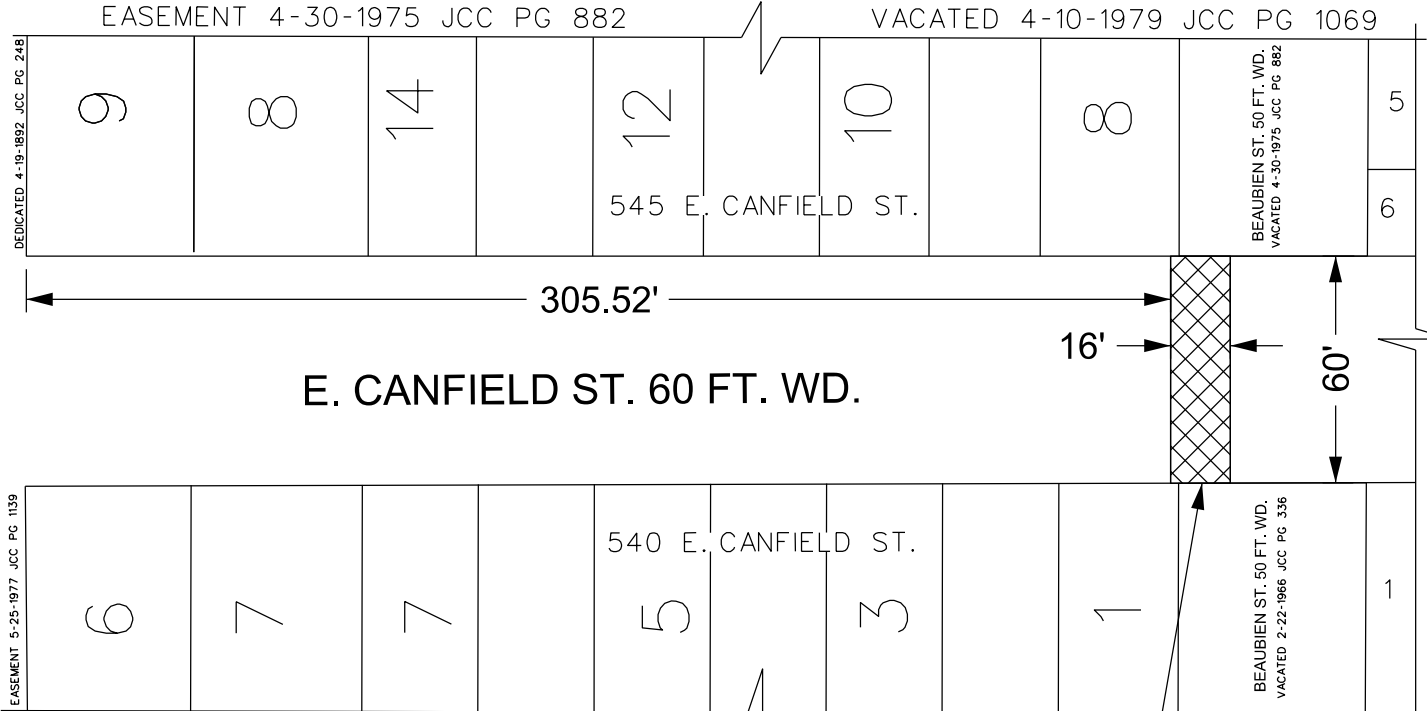


MAP-25-51

GARFIELD AVE. 60 FT. WD.



BRUSH ST. 60 FT. WD.

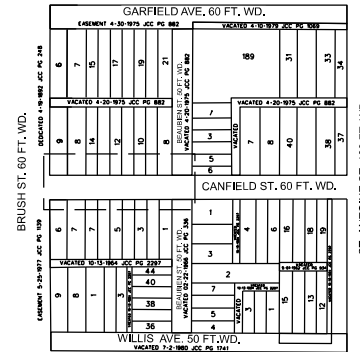


E. CANFIELD ST. 60 FT. WD.

WILLIS ST. 100 FT. WD.  
VACATED 7-2-1980 JCC PG 1741

ST. ANTOINE ST. 120 FT. WD.

PROPOSED PEDESTRIAN BRIDGE  
16' X 60' (30' TO 48' ABOVE GRADE)



 - REQUEST ENCROACHMENT  
(For Pedestrian Bridge)

(FOR OFFICE USE ONLY)

CARTO 30 F

B				
A				
DESCRIPTION	DRWN	CHKD	APPD	DATE
REVISIONS				
DRAWN BY	LC	CHECKED	AP/TS	
DATE	06-03-2025	APPROVED	GE	

REQUEST ENCROACHMENT FOR  
PEDESTRIAN BRIDGE OVER  
E. CANFIELD ST. BETWEEN BRUSH ST. AND ST. ANTOINE ST.

CITY OF DETROIT CITY ENGINEERING DIVISION SURVEY BUREAU	
JOB NO.	25-51
DRWG. NO.	