

## **Health Sciences Research Building Pedestrian Bridge**

Wayne State University is creating a nationally recognized health sciences research building that will support the School of Medicine with the creation of world-class academic, research, and community engagement spaces. From the start, this project has sought to build on WSU's partnership and inextricable links to Detroit by fostering seamless connections across the campus and within the city. With a goal of making research visible, accessible, and participatory - the site is designed to be inclusive and accessible to all. Here, a sense of community and excitement is being created with a welcoming site that includes activated spaces and places for respite. The theme of science on display has guided decisions about everything from living lab raingardens to the building's prioritized fenestration and material composition. Rooms for community use such as a tech center and multi-purpose meeting rooms have been strategically located to have visual and physical connection to outdoor spaces.

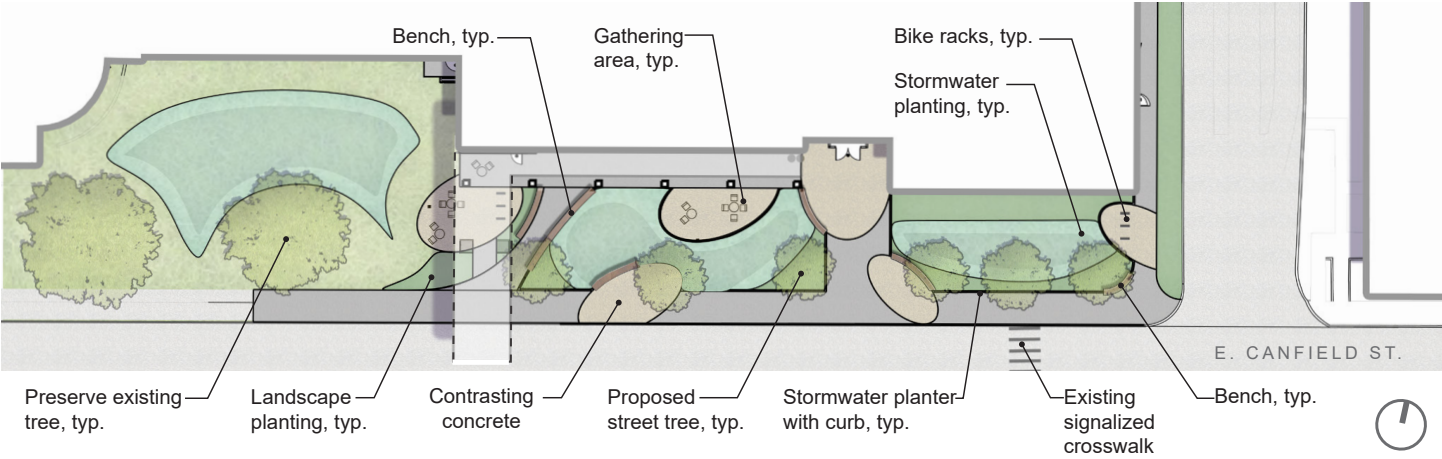
Street level pedestrian experiences will be strengthened with a new landscaped streetscape, paths, gathering areas, and raingardens for stormwater management. A HAWK pedestrian passage across E. Canfield to the Medical campus at ground level currently exists just West of the parking structure entry drive. Additional and/or adjusted crossing locations have been considered by WSU and the design team. A MOGO station is under review for incorporation at a future date.

The pedestrian bridge is a critical connector to shared lab functions located in Elliman and Scott Hall, allowing the new building to provide state-of-the-art facilities and equipment without unnecessary redundancy. It also serves as a gateway to WSU and its medical and research hub. Care has been taken to create a visually compelling bridge that includes bird friendly fritted glass. Additionally, a gradient frit pattern on the glass from floor level (opaque) to eye level (transparent) is integral to the bridge design. Changeable graphics may be applied on the bridge face for WSU branding and messaging by using static window clings. Wood ceiling and linear lights create interest at the bridge underside, and an iconic W shaped structure supports the bridge at either end. Designed to achieve LEED certification, the bridge will also address sustainable practices for a healthy environment with minimized negative impacts on the built environment.

Images on the following pages illustrate the concepts outlined above.



View from third floor of Scott Hall looking North



New Streetscape and Landscape at Building entry.



Approach from West on E. Canfield



View inside bridge walking toward new Research Building