

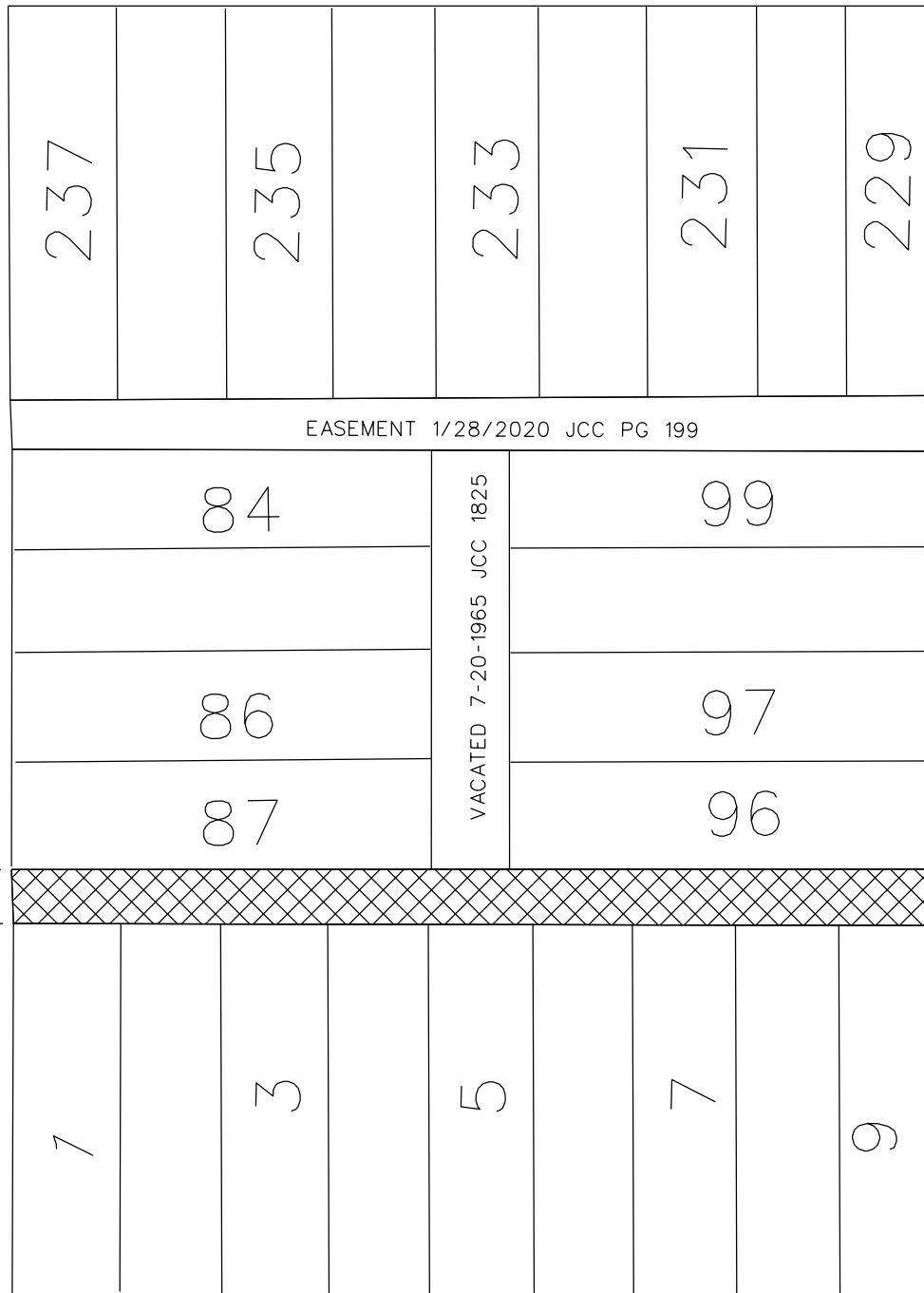
EAST GRAND BLVD. 150 FT. WD.



ST ANTOINE ST. 50 FT. WD.

OAKLAND AVE. 50 FT. WD.

16' →



EASEMENT 1/28/2020 JCC PG 199

VACATED 7-20-1965 JCC 1825

E. MILWAUKEE ST. 50 FT. WD.



- VACATION WITH EASEMENT

(FOR OFFICE USE ONLY)

CARTO 31 F

B						<p>REQUEST TO VACATE WITH EASEMENT THE EAST/WEST ALLEY BOUNDED BY ST. ANTOINE ST., E. MILWAUKEE ST., OAKLAND AVE., AND E. GRAND BLVD.</p>	<p>CITY OF DETROIT CITY ENGINEERING DIVISION SURVEY BUREAU</p>	
A								<p>JOB NO. 24-88</p>
DESCRIPTION		DRWN	CHKD	APPD	DATE			
REVISIONS		CHECKED		AP				
DRAWN BY	LC	APPROVED		RW		DRWG. NO.		
DATE	06-28-2024							