

Janice M. Winfrey  
City Clerk

**City of Detroit**  
OFFICE OF THE CITY CLERK

Andre P. Gilbert II  
Deputy City Clerk

**DEPARTMENT PETITION REFERENCE COMMUNICATION**

*To: The Department or Commission Listed Below*

*From: Janice M Winfrey, Detroit City Clerk*

---

The following petition is herewith referred to you for report and recommendation to the City Council.

In accordance with that body's directive, kindly return the same with your report in duplicate within four (4) weeks.

---

Petition No.	2025-268
Name of Petitioner	Clairmount Apartments LLC
Description of Petition	Petition to request encroachment into the northerly part of Clairmount Ave. for a below-grade 72 LF 8" SCH 40 PVC roof leader.
Type of Petition	<b>Alley Vacation/Encroachment/Utility Vacation</b>
Submission Date	10/13/25
Concerned Departments	Media Services, Building & Safety Engineering, Police Department, Fire Department, Municipal Parking Department, Transportation Department, Health Department, General Services Department
Petitioner Contact	Clairmount Apartments LLC 100 Clairmount Ave. Detroit, MI, 48202



**CITY OF DETROIT  
DEPARTMENT OF PUBLIC WORKS  
CITY ENGINEERING DIVISION**

**COLEMAN A. YOUNG MUNICIPAL CENTER  
2 WOODWARD AVE. SUITE 601  
DETROIT, MICHIGAN 48226  
PHONE: (313) 224-3949 TTY: 711  
WWW.DETROITMI.GOV**

---

To: Clerk's Office  
From: The Department of Public Works  
City Engineering Division  
MapsandRecordsBureau@DetroitMI.Gov  
(313) 224-3970

Petitioner:  
Clairmount Apartments LLC  
100 Clairmount Ave.  
Detroit, MI, 48202

On behalf of the above-mentioned petitioner the Department of Public Works: City Engineering Division is submitting a petition request for the action below. The petitioner has received a project consultation from the Department of Public Works: City Engineering Division and has been advised the following:

Type of action recommended:

Petition for encroachment into the northerly part of Clairmount Ave. for a below-grade 72 LF 8" SCH 40 PVC roof leader.

Raven Wright  
Supervisor of Maps & Records  
Department of Public Works  
City Engineering Division  
313-224-3985

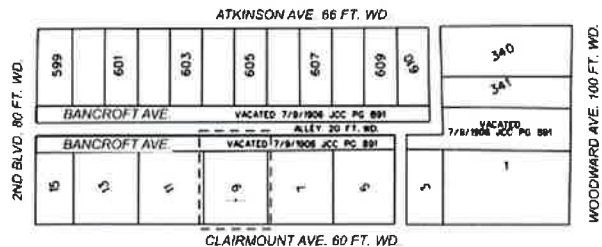
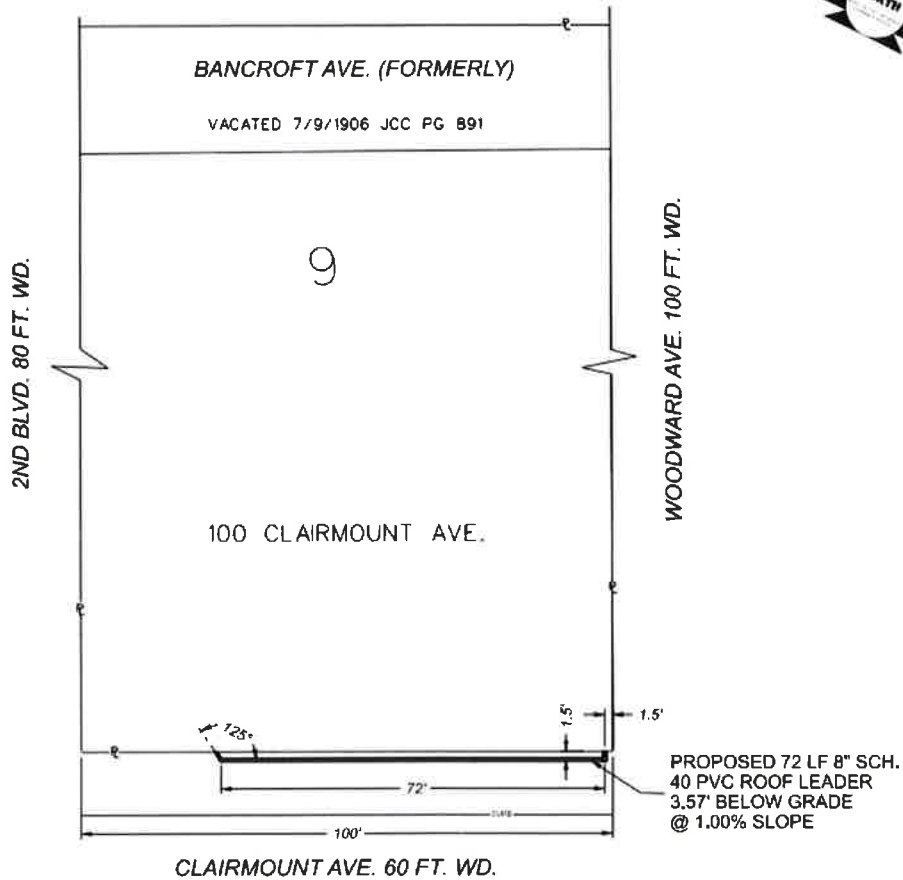
**COLEMAN A. YOUNG MUNICIPAL CENTER**  
**2 WOODWARD AVE. SUITE 601**  
**DETROIT, MICHIGAN 48226**  
**PHONE: (313) 224-3949 TTY: 711**  
**WWW.DETROITMI.GOV**



CITY OF DETROIT  
DEPARTMENT OF PUBLIC WORKS  
CITY ENGINEERING DIVISION

COLEMAN A. YOUNG MUNICIPAL CENTER  
2 WOODWARD AVE. SUITE 601  
DETROIT, MICHIGAN 48226  
PHONE: (313) 224-3949 TTY: 711  
WWW.DETROITMI.GOV

MAP-25-48



 - REQUEST ENCROACHMENT  
(For Stormwater Piping)

(FOR OFFICE USE ONLY)

CARTO 32 E

B				
A				
DESCRIPTION				
REVISIONS				
DRAWN BY	LC	CHECKED	AP/TS	
DATE	07/31/2025	APPROVED	GE	

REQUEST ENCROACHMENT INTO  
CLAIRMOUNT AVE. BETWEEN 2ND BLVD.  
AND WOODWARD AVE.  
AT 100 CLAIRMOUNT AVE.

CITY OF DETROIT	
CITY ENGINEERING DIVISION	
SURVEY BUREAU	
JOB NO.	25-48
DRWG. NO.	