



**CITY OF DETROIT  
DEPARTMENT OF PUBLIC WORKS  
CITY ENGINEERING DIVISION**

**COLEMAN A. YOUNG MUNICIPAL CENTER  
2 WOODWARD AVE. SUITE 601  
DETROIT, MICHIGAN 48226  
PHONE: (313) 224-3949 TTY: 711  
WWW.DETROITMI.GOV**

---

To: Clerk's Office  
From: The Department of Public Works  
City Engineering Division  
MapsandRecordsBureau@DetroitMI.Gov  
(313) 224-3970

Petitioner:  
Clairmount Apartments LLC  
100 Clairmount Ave.  
Detroit, MI, 48202

On behalf of the above-mentioned petitioner the Department of Public Works: City Engineering Division is submitting a petition request for the action below. The petitioner has received a project consultation from the Department of Public Works: City Engineering Division and has been advised the following:

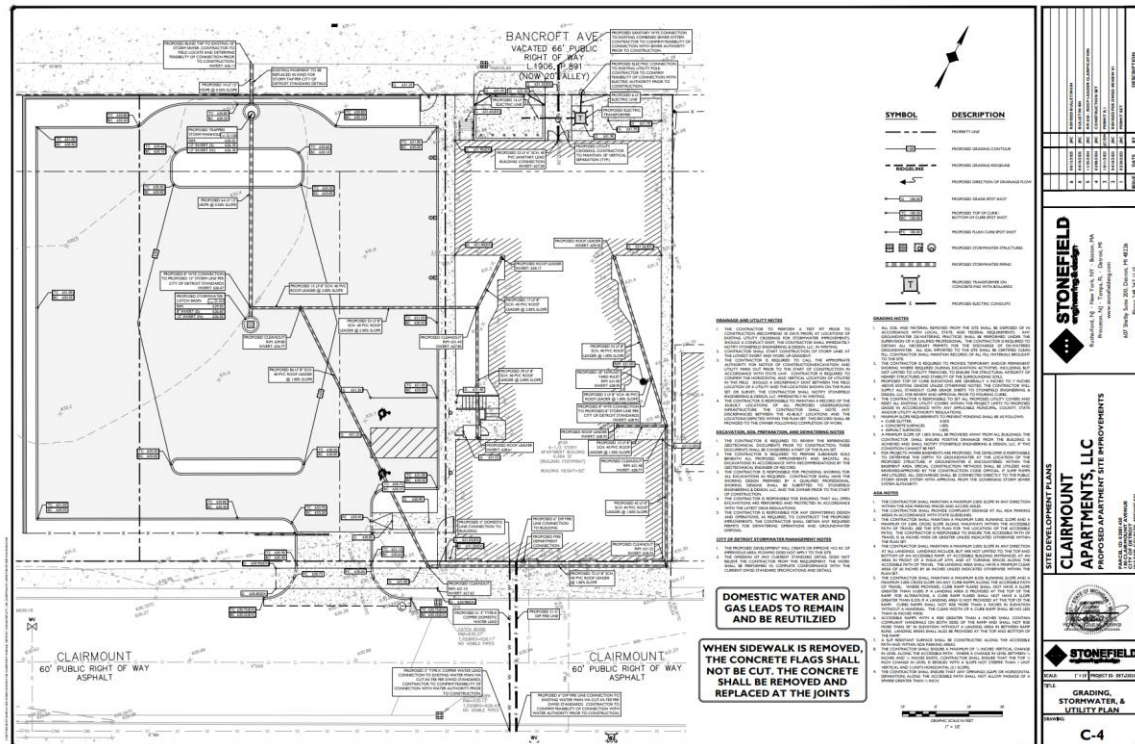
Type of action recommended:

Petition for encroachment into the northerly part of Clairmount Ave. for a below-grade 72 LF 8" SCH 40 PVC roof leader.

Raven Wright  
Supervisor of Maps & Records  
Department of Public Works  
City Engineering Division  
313-224-3985



**COLEMAN A. YOUNG MUNICIPAL CENTER**  
**2 WOODWARD AVE. SUITE 601**  
**DETROIT, MICHIGAN 48226**  
**PHONE: (313) 224-3949 TTY: 711**  
**WWW.DETROITMI.GOV**

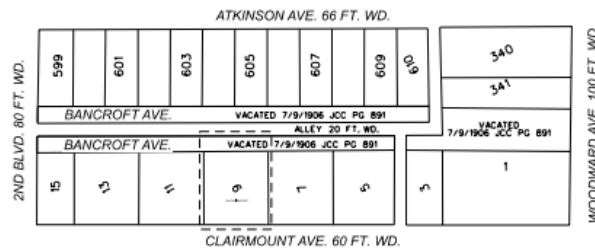
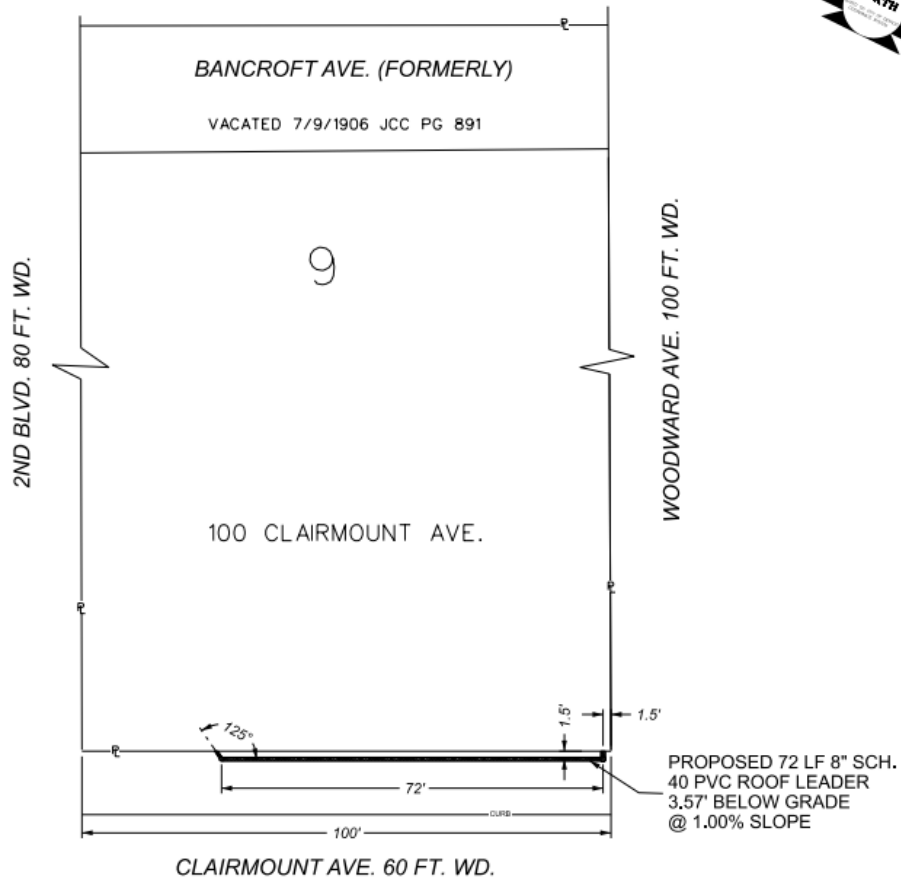




CITY OF DETROIT  
DEPARTMENT OF PUBLIC WORKS  
CITY ENGINEERING DIVISION

COLEMAN A. YOUNG MUNICIPAL CENTER  
2 WOODWARD AVE. SUITE 601  
DETROIT, MICHIGAN 48226  
PHONE: (313) 224-3949 TTY: 711  
WWW.DETROITMI.GOV

MAP-25-48



 - REQUEST ENCROACHMENT  
(For Stormwater Piping)

(FOR OFFICE USE ONLY)

CARTO 32 E

B					
A					
REVISIONS					
DESCRIPTION	REV	CHKD	APPD	DATE	
DRAWN BY	LC	CHECKED	AP/TS		
DATE	07/31/2025	APPROVED	GE		

REQUEST ENCROACHMENT INTO  
CLAIRMOUNT AVE. BETWEEN 2ND BLVD.  
AND WOODWARD AVE.  
AT 100 CLAIRMOUNT AVE.

CITY OF DETROIT	
CITY ENGINEERING DIVISION	
SURVEY BUREAU	
JOB NO.	25-48
DRWG. NO.	