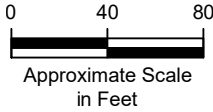


LEGEND

 = INVESTIGATION AREA



TITLE

PROPOSED SCOPE - 2024



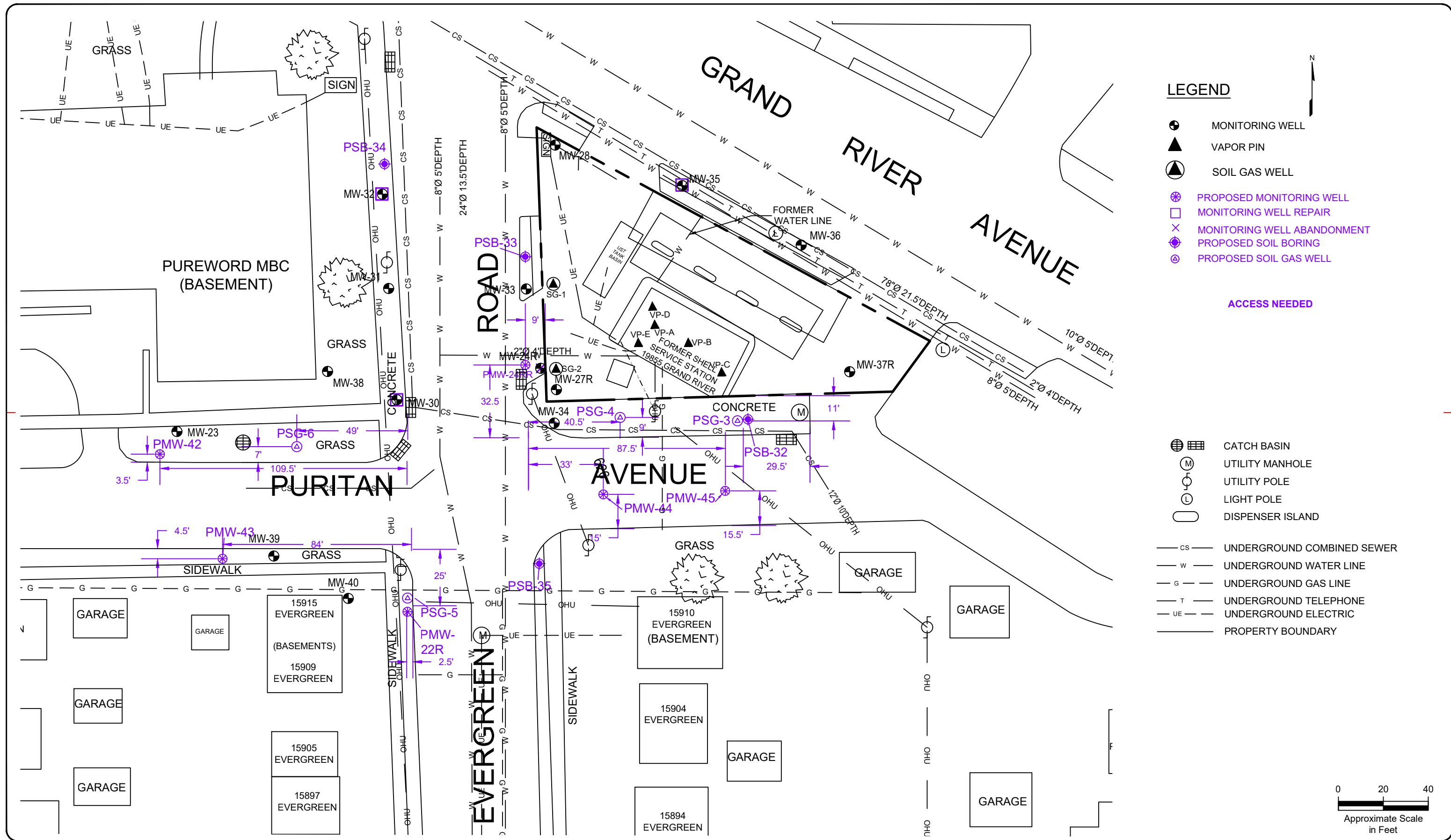
AECOM Technical Services, Inc.
Novi, Michigan, 248-204-5900

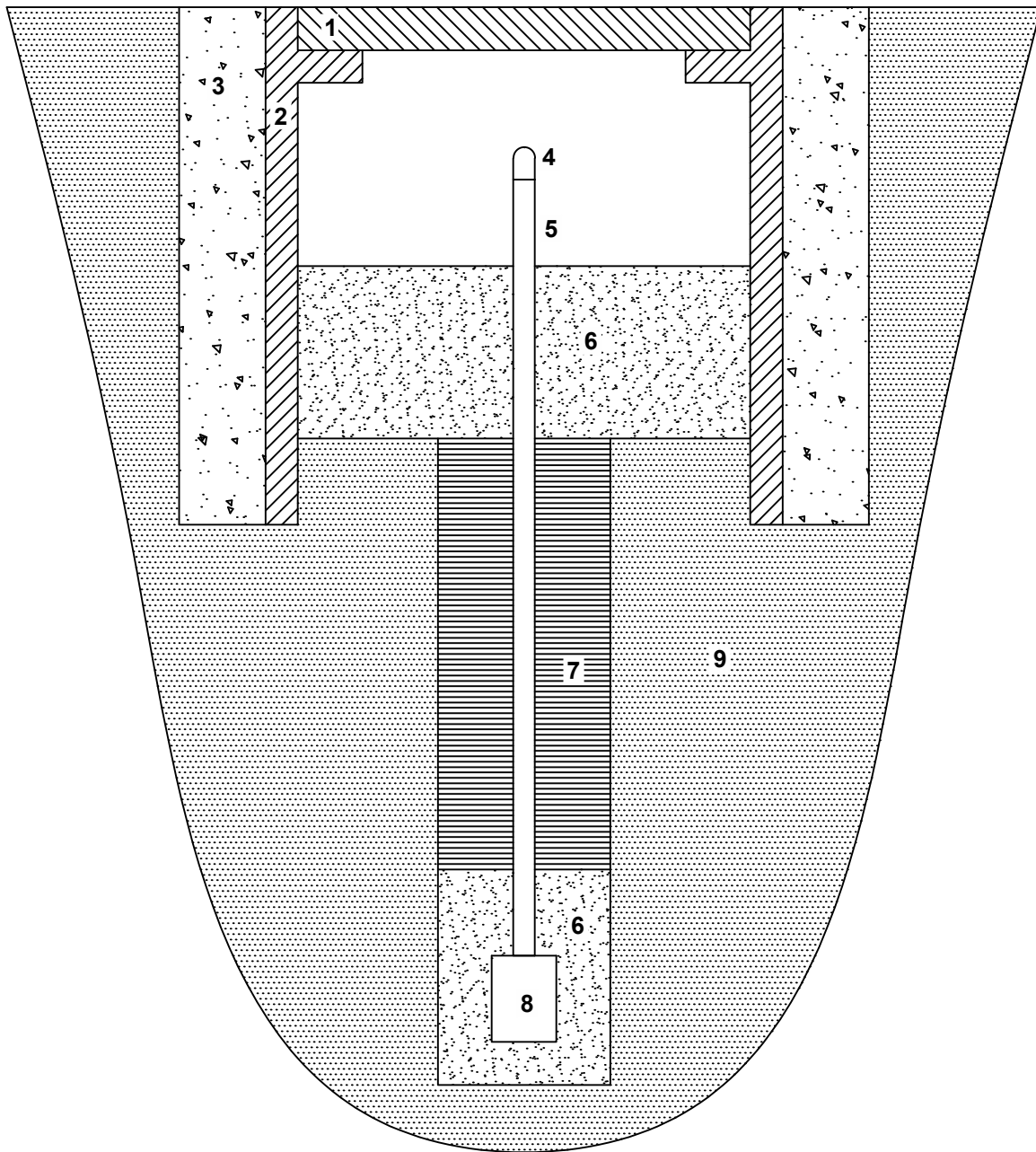
19855 Grand River Avenue
Detroit, Michigan 48223

NOTE: FOR INFORMATIONAL PURPOSES ONLY
NOT A PROFESSIONAL SURVEY
ALL LOCATIONS/DIMENSIONS ARE APPROXIMATE

DATE
04/15/24
DR. MT
CK. JTB

JOB NO. SOPUS
SKETCH NO. Fig. 1





Legend -

1. Bolted flushmount cover
2. Protective skirt
3. Concrete pad
4. Probe cap
5. Probe tubing (labeled in vault)
6. Sand pack
7. Bentonite seal
8. Soil gas probe screen
9. Native material

Notes -

Soil gas probe screens are 6-inches in length or less.

Multiple soil gas probes may be installed in the same location, each screen set in its own sand pack with bentonite between.

Not to scale; exact construction will vary depending on Site conditions.

TITLE

SOIL GAS PROBE CONSTRUCTION

AECOM

AECOM Technical Services, Inc.
Novi, Michigan, 248-204-5900

DATE
3/30/23

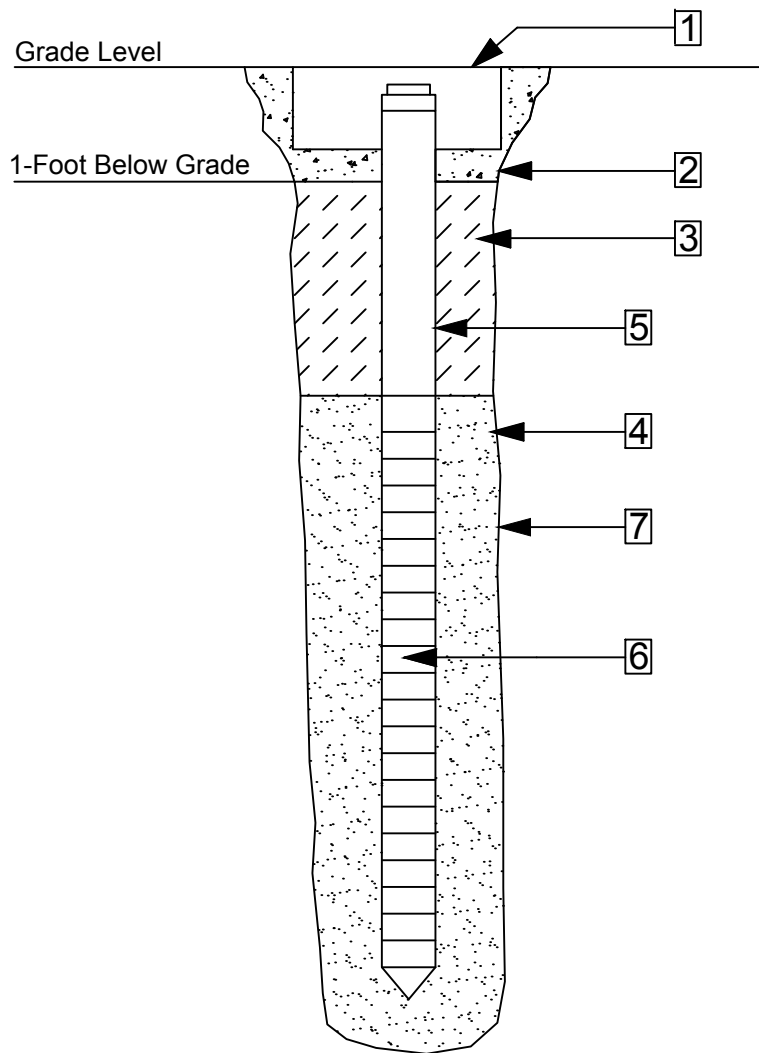
DR.
BM

CK.
JTB

JOB NO.
SOPUS

SKETCH NO.

App. A



1. 10-Inch Diameter Protective Cover
2. Concrete Seal
3. Bentonite Seal
4. Silica Sand
5. 2-Inch Diameter Casing
6. Screen Data
 - A. Type - Schedule 40 PVC
 - B. 10-Slot Screen Size
7. Borehole Drilled with 4 1/4-Inch Augers

TITLE

TYPICAL MONITORING WELL CONSTRUCTION DIAGRAM



AECOM Technical Services, Inc.
Novi, Michigan, 248-204-5900

DATE
11/06/21

JOB NO.
SOPUS

DR.
AB

SKETCH NO.

CK.
MR

App. A