

Janice M. Winfrey  
City Clerk

**City of Detroit**  
OFFICE OF THE CITY CLERK

Andre P. Gilbert II  
Deputy City Clerk

**DEPARTMENT PETITION REFERENCE COMMUNICATION**

*To: The Department or Commission Listed Below*

*From: Janice M Winfrey, Detroit City Clerk*

---

The following petition is herewith referred to you for report and recommendation to the City Council.

In accordance with that body's directive, kindly return the same with your report in duplicate within four (4) weeks.

---

Petition No.	2025-251
Name of Petitioner	City of Detroit – Water Board
Description of Petition	Petition to request an encroachment into the westerly part of Randolph St. for an existing sub-grade concrete parking garage.
Type of Petition	<b>Alley Vacation/Encroachment/Utility Vacation</b>
Submission Date	09/30/25
Concerned Departments	Media Services, Building & Safety Engineering, Police Department, Fire Department, Municipal Parking Department, Transportation Department, Health Department, General Services Department
Petitioner Contact	Georgine Gersdorff Manager II Department of Public Works City Engineering Division (Ph) 313-224-3985



**CITY OF DETROIT  
DEPARTMENT OF PUBLIC WORKS  
CITY ENGINEERING DIVISION**

**COLEMAN A. YOUNG MUNICIPAL CENTER  
2 WOODWARD AVE. SUITE 601  
DETROIT, MICHIGAN 48226  
PHONE: (313) 224-3949 TTY: 711  
WWW.DETROITMI.GOV**

---

To: Clerk's Office  
From: The Department of Public Works  
City Engineering Division  
MapsandRecordsBureau@DetroitMI.Gov  
(313) 224-3970

Petitioner:  
City of Detroit – Water Board  
735 Randolph St.  
Detroit, MI 48226

On behalf of the above-mentioned petitioner the Department of Public Works: City Engineering Division is submitting a petition request for the below mentioned action. The petitioner has received a project consultation from the Department of Public Works: City Engineering Division and has been advised the following:

Type of action recommended:

Petition to request an encroachment into the westerly part of Randolph St. for an existing sub-grade concrete parking garage.

Georgine Gersdorff  
Manager II  
Department of Public Works  
City Engineering Division  
313-224-3985



MAP-25-89



(FOR OFFICE USE ONLY)

<b>DRAWN BY</b>	TS
<b>DATE</b>	09/04/2025
<b>CHECKED</b>	AP/LC
<b>APPROVED</b>	GE

REQUEST ENCROACHMENT INTO  
RANDOLPH ST.  
AT 836 BATES ST.

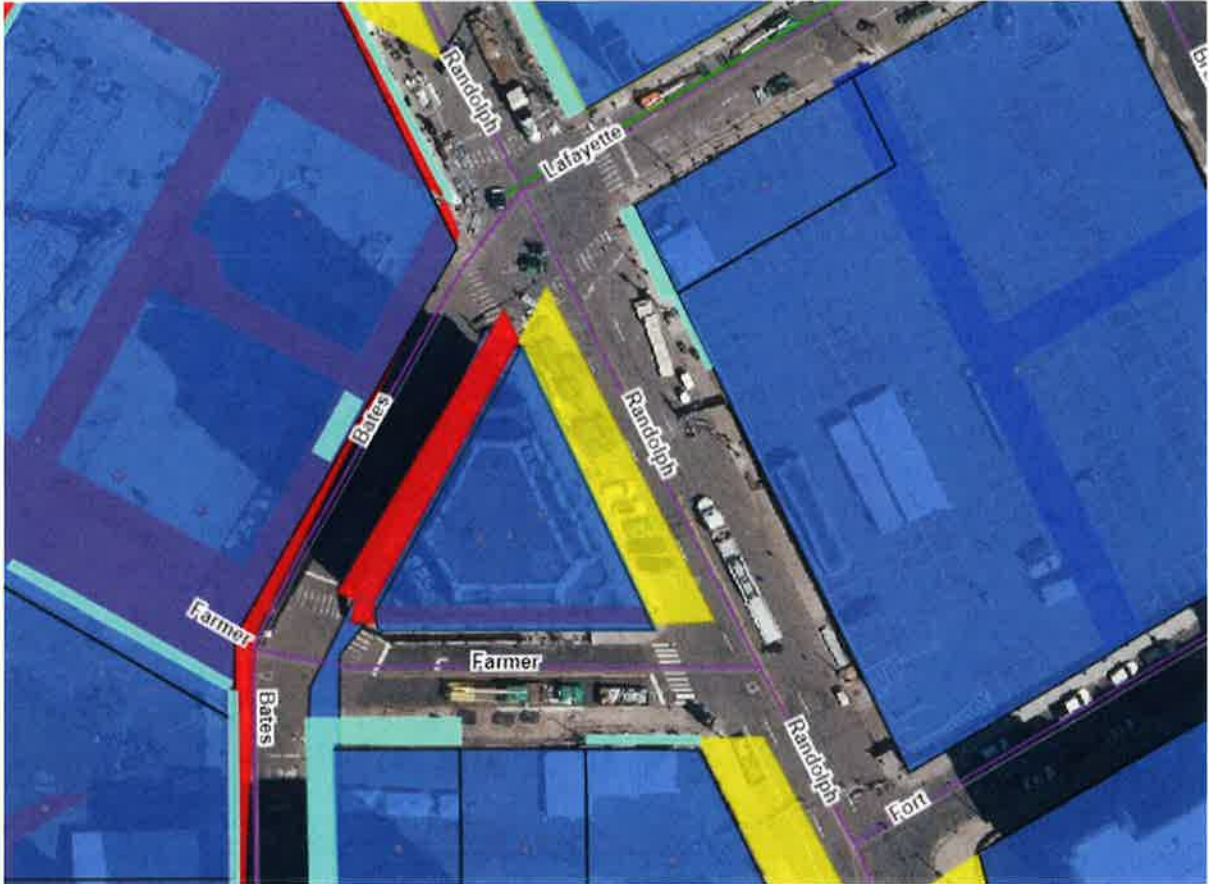
CARTO 28 F

<b>CITY OF DETROIT</b> <b>CITY ENGINEERING DIVISION</b> <b>MAPS &amp; RECORDS BUREAU</b>	
<b>JOB NO.</b>	<b>25-89</b>
<b>DRWG. NO.</b>	

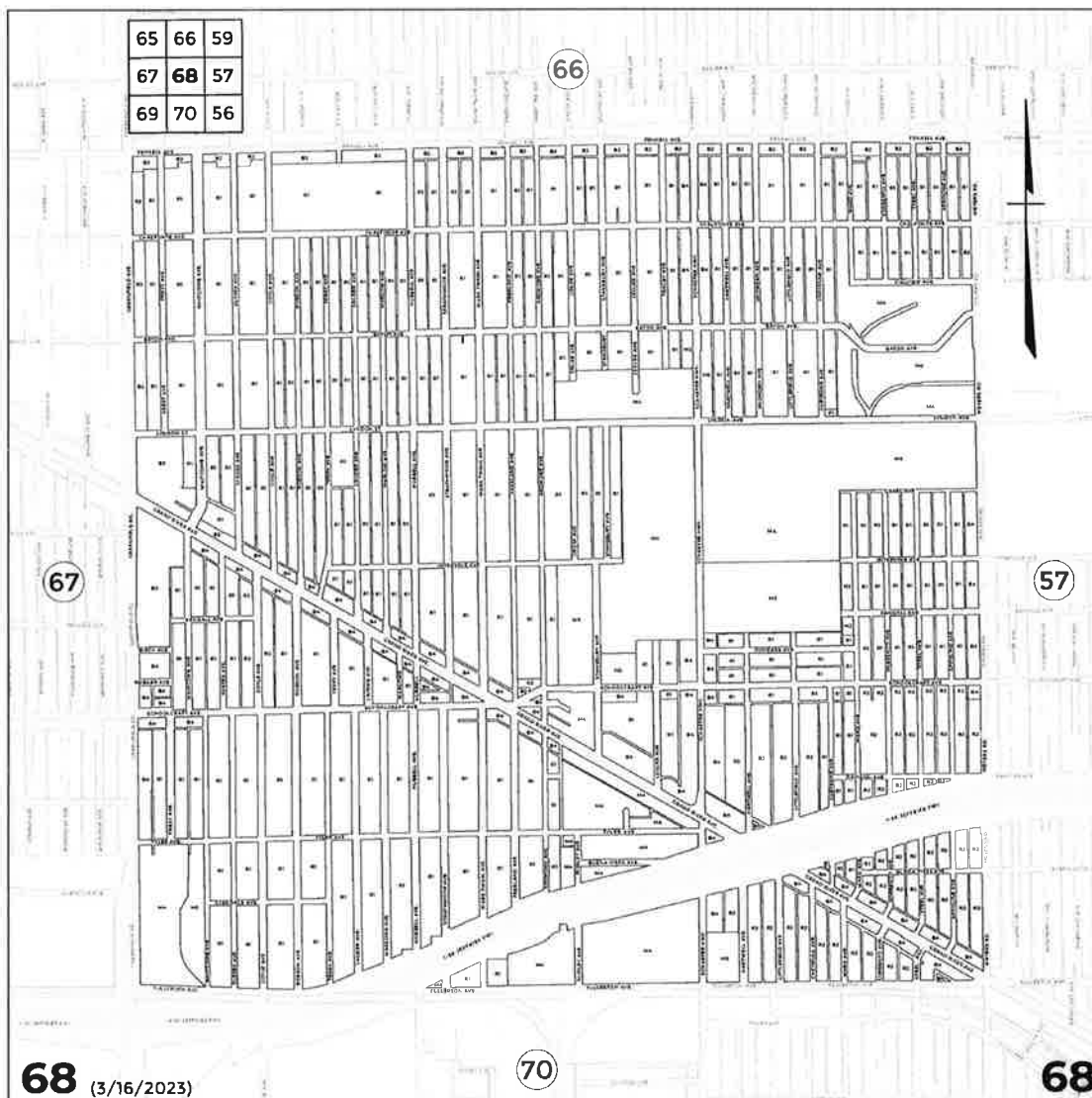


**CITY OF DETROIT**  
**DEPARTMENT OF PUBLIC WORKS**  
**CITY ENGINEERING DIVISION**

**COLEMAN A. YOUNG MUNICIPAL CENTER**  
**2 WOODWARD AVE. SUITE 601**  
**DETROIT, MICHIGAN 48226**  
**PHONE: (313) 224-3949 TTY: 711**  
**[WWW.DETROITMI.GOV](http://WWW.DETROITMI.GOV)**



**Sec. 50-17-70. District Map No. 68.**



(Code 1936; Code 1945; Code 1954; Code 1964; Code 1984; Ord. No. 171-D, § 1, eff. 12-25-1940; Ord. No. 218-D, § 1, eff. 11-6-1941; Ord. No. 273-D, § 1, eff. 7-29-1942; Ord. No. 70-E, § 1, eff. 4-11-1946; Ord. No. 79-E, § 1, eff. 5-16-1946; Ord. No. 151-E, § 1, eff. 5-29-1947; Ord. No. 152-E, § 1, eff. 5-29-1947; Ord. No. 169-E, § 1, eff. 8-21-1947; Ord. No. 355-E, § 1, eff. 8-25-1949; Ord. No. 472-E, § 1, eff. 8-16-1950; Ord. No. 487-E, § 1, eff. 9-7-1950; Ord. No. 657-E, § 1, eff. 7-24-1952; Ord. No. 880-E, § 1, eff. 7-29-1954; Ord. No. 92-F, § 1, eff. 2-23-1956; Ord. No. 312-F, § 1, eff. 7-31-1958; Ord. No. 349-G, § 1, eff. 9-1-1968; Ord. No. 614-G, § 1, eff. 10-14-1971; Ord. No. 628-G, § 1, eff. 11-25-1971; Ord. No. 399-H, § 1, eff. 8-31-1980; Ord. No. 533-H, § 1, eff. 12-21-1982; Ord. No. 20-95, § 1, eff. 8-11-1995; Ord. No. 2023-30, § 1, eff. 10-4-2023)