

Janice M. Winfrey  
City Clerk

**City of Detroit**  
OFFICE OF THE CITY CLERK

Andre P. Gilbert II  
Deputy City Clerk

**DEPARTMENT PETITION REFERENCE COMMUNICATION**

*To: The Department or Commission Listed Below*

*From: Janice M Winfrey, Detroit City Clerk*

---

The following petition is herewith referred to you for report and recommendation to the City Council.

In accordance with that body's directive, kindly return the same with your report in duplicate within four (4) weeks.

---

Petition No.	2025-235
Name of Petitioner	Brewster Wheeler I Limited Dividend Housing Association, LLC
Description of Petition	Petition to request the outright vacation of a portion of the east/west public alley bounded by (I-75) Chrysler Fwy. S.S.D., Alfred St., St. Antoine St., and Brewster St.
Type of Petition	<b>Alley Vacation/Encroachment/Utility Vacation</b>
Submission Date	09/17/25
Concerned Departments	Media Services, Building & Safety Engineering, Police Department, Fire Department, Municipal Parking Department, Transportation Department, Health Department, General Services Department
Petitioner Contact	Paul Stoddard Director of Design & Construction 32500 Telegraph Road, Suite 100 Bingham Farms, MI 48025 (Ph) 248-833-0552



**CITY OF DETROIT  
DEPARTMENT OF PUBLIC WORKS  
CITY ENGINEERING DIVISION**

**COLEMAN A. YOUNG MUNICIPAL CENTER  
2 WOODWARD AVE. SUITE 601  
DETROIT, MICHIGAN 48226  
PHONE: (313) 224-3949 TTY: 711  
WWW.DETROITMI.GOV**

---

To: Clerk's Office  
From: The Department of Public Works  
City Engineering Division  
MapsandRecordsBureau@DetroitMI.Gov  
(313) 224-3970

Petitioner:  
Brewster Wheeler I Limited Dividend Housing Association, LLC  
32500 Telegraph Road  
Bingham Farms, MI 48025

On behalf of the above-mentioned petitioner the Department of Public Works: City Engineering Division is submitting a petition request for the below mentioned action. The petitioner has received a project consultation from the Department of Public Works: City Engineering Division and has been advised the following:

Type of action recommended:

Petition to request the outright vacation of a portion of the east/west public alley bounded by (I-75) Chrysler Fwy. S.S.D., Alfred St., St. Antoine St., and Brewster St.

Georgine Gersdorff  
Manager II  
Department of Public Works  
City Engineering Division  
313-224-3985



CITY OF DETROIT  
DEPARTMENT OF PUBLIC WORKS  
CITY ENGINEERING DIVISION

COLEMAN A. YOUNG MUNICIPAL CENTER  
2 WOODWARD AVE. SUITE 601  
DETROIT, MICHIGAN 48226  
PHONE: (313) 224-3949 TTY: 711  
WWW.DETROITMI.GOV

---

August 19, 2025

City of Detroit  
Maps and Records Bureau  
2 Woodward Avenue, Room 216  
Detroit, MI 48226

**RE: REQUEST FOR EASEMENT VACATION**

- **N/S 13.52-FT VACATED ALLEY LOCATED BETWEEN VACATED BREWSTER STREET AND ALFRED STREET**
- **E/W 20-FT VACATED ALLEY LOCATED BETWEEN 13.52 FT ALLEY DESCRIBED ABOVE AND CHRYSLER DRIVE DETROIT, WAYNE COUNTY, MICHIGAN**

---

To whom it may concern:

On behalf of MHT Housing, Inc, applicant for the above referenced petition, we seek permission to vacate the following easements:

- 13.52-ft wide vacated alley located between vacated Brewster Street and Alfred Street;
- 20-ft wide vacated alley located between 13.52 ft alley described above and Chrysler Drive

The requested vacations are related to construction of three (3) new, 4-story, buildings consisting of 159 residential units. Combined sewer exists within the vacated alleys and the proposed buildings will encroach on the vacated alleys. The existing combined sewer will be removed, and new sanitary sewer is proposed to serve the development.

Currently, the subject property is unimproved.

We respectfully request permission to vacate the easements as described herein, and as illustrated in the attached site plan.

Sincerely,

*Paul Stoddard*

---

Paul Stoddard  
Director of Design & Construction  
MHT Housing, Inc.  
32500 Telegraph Road, Suite 100  
Detroit, Michigan 48025  
Tel.: 248-833-0552  
Email:



**CITY OF DETROIT**  
**DEPARTMENT OF PUBLIC WORKS**  
**CITY ENGINEERING DIVISION**

**COLEMAN A. YOUNG MUNICIPAL CENTER**  
**2 WOODWARD AVE. SUITE 601**  
**DETROIT, MICHIGAN 48226**  
**PHONE: (313) 224-3949 TTY: 711**  
**WWW.DETROITMI.GOV**

**VICINITY MAP**

**BREWSTER WHEELER I LDHA, LLC**  
**BREWSTER WHEELER II LDHA, LLC**  
**BREWSTER WHEELER III LDHA, LLC**  
**NEW HOUSING**  
**631,651,671 ALFRED STREET**  
**WAYNE COUNTY, MICHIGAN 48201**

**INDEX OF SHEETS**

C5	COVER SHEET
ALTA	ALTA SURVEY
C1.2	REMOVALS PLAN
C1.0	OVERALL SITE PLAN
C1.1 - C1.3	SITE PLAN
C2.0	OVERALL GRADING, DRAINAGE, & SESC PLAN
C2.1 - C2.3	GRADING, DRAINAGE, & SESC PLAN
C2.4	CONTRIBUTING AREA PLAN
C2.5	SITE UTILITY PLAN
C2.1 - C2.3	STORM SEWER PLAN & PROFILE
C3.4	SANITARY SEWER PLAN & PROFILE
C4.0 - C4.7	X-SECTIONS, NOTES, AND DETAILS
L1.0	LANDSCAPE PLAN

**OWNER**

**BREWSTER WHEELER I LDHA, LLC**  
32500 TELEGRAPH ROAD, SUITE 100  
DETROIT, MICHIGAN 48025  
PHONE: 248-833-0552

**BREWSTER WHEELER II LDHA, LLC**  
32500 TELEGRAPH ROAD, SUITE 100  
DETROIT, MICHIGAN 48025  
PHONE: 248-833-0552

**BREWSTER WHEELER III LDHA, LLC**  
32500 TELEGRAPH ROAD, SUITE 100  
DETROIT, MICHIGAN 48025  
PHONE: 248-833-0552

**811**  
Know what's below.  
Call before you dig.

The customer is responsible for the 811 call. The 811 call is a request for information only. It does not guarantee the accuracy of the information provided. The customer is responsible for the safety of the excavation and for the safety of the public. The customer is responsible for the safety of the excavation and for the safety of the public.

**NEIGHBORHOOD MAP**

**PLAN PREPARED BY**  
Bryan A. Callan, PE  
Callan Engineering, Inc.  
100 East Seward Street  
Spring Lake, MI 49456  
(616) 414-1200  
bryan.callan@callaneng.com

**DATE OF PLAN:** 08-01-20

**811 - BREWSTER - PHASE 1-3**

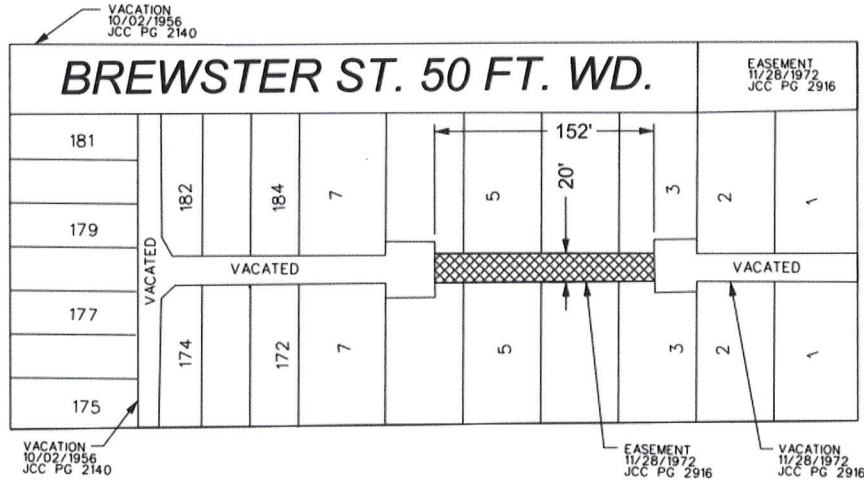


CITY OF DETROIT  
DEPARTMENT OF PUBLIC WORKS  
CITY ENGINEERING DIVISION

COLEMAN A. YOUNG MUNICIPAL CENTER  
2 WOODWARD AVE. SUITE 601  
DETROIT, MICHIGAN 48226  
PHONE: (313) 224-3949 TTY: 711  
WWW.DETROITMI.GOV

MAP-25-86

ST. ANTOINE ST. 50 FT. WD.



ALFRED ST. 50 FT. WD.

(I-75) - CHRYSLER FWY. S.S.D.



- REQUEST OUTRIGHT VACATION

(FOR OFFICE USE ONLY)

CARTO 29 F

B					
A					
DESCRIPTION	REVISED	DATE	CHKD	APPD	DATE
DRAWN BY	AP	CHECKED	LC / TS		
DATE	08-25-2025	APPROVED	GE		

REQUEST OUTRIGHT VACATION  
A PORTION OF THE EAST/WEST ALLEY  
BOUNDED BY CHRYSLER FWY. S.S.D.,  
ALFRED ST., ST. ANTOINE ST., AND  
BREWSTER ST.

CITY OF DETROIT  
CITY ENGINEERING DIVISION  
SURVEY BUREAU  
JOB NO. 25-86  
DRWG. NO.





**CITY OF DETROIT  
DEPARTMENT OF PUBLIC WORKS  
CITY ENGINEERING DIVISION**

**COLEMAN A. YOUNG MUNICIPAL CENTER  
2 WOODWARD AVE. SUITE 601  
DETROIT, MICHIGAN 48226  
PHONE: (313) 224-3949 TTY: 711  
[WWW.DETROITMI.GOV](http://WWW.DETROITMI.GOV)**

---