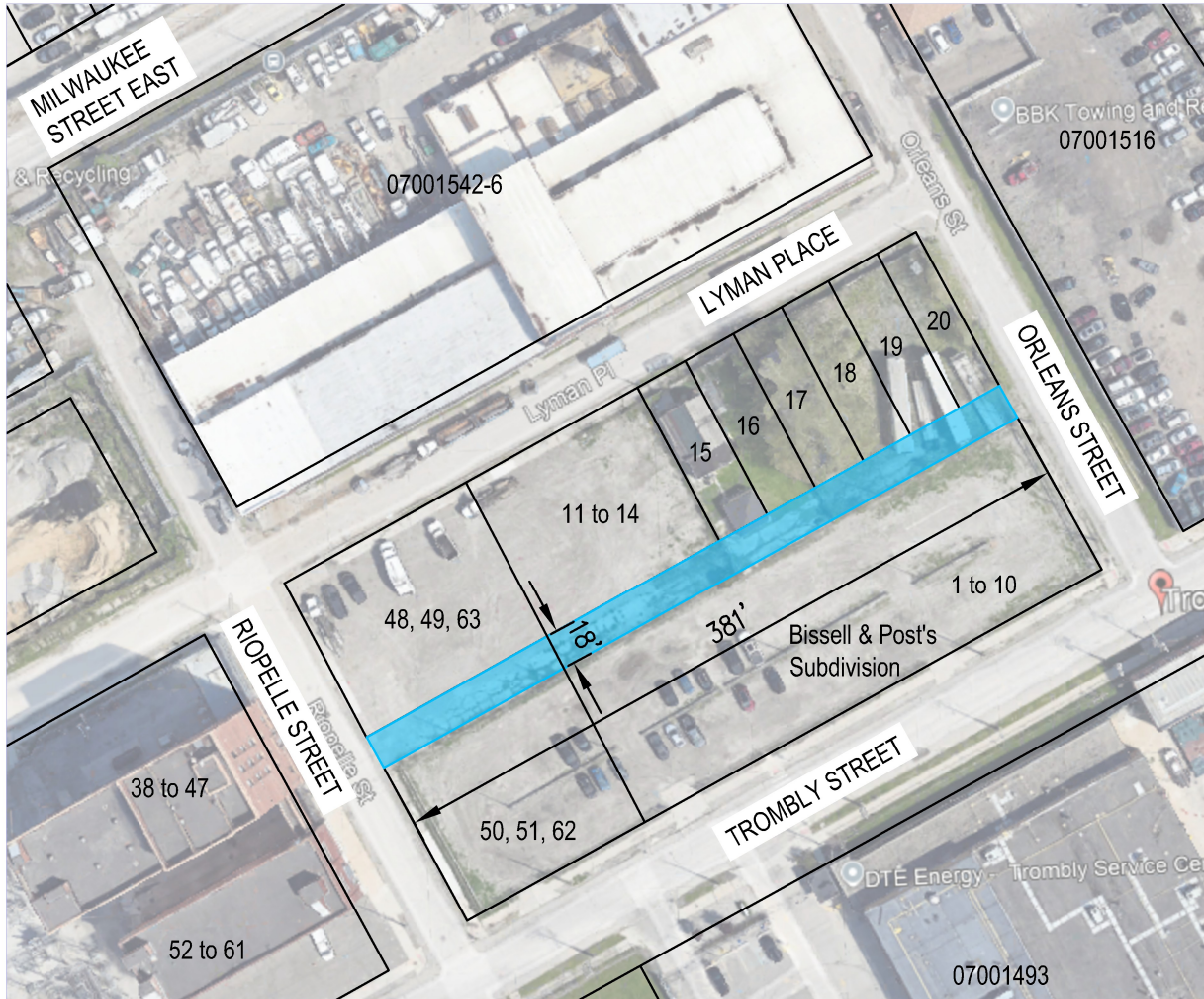
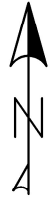


EXHIBIT A

VACATION AND CONVERSION TO EASEMENT OF ALLEYWAY FROM RIOPELLE STREET TO ORLEANS STREET

VACATION AND CONVERSION TO EASEMENT OF 18' ALLEY RIGHT OF WAY FROM THE RIOPELLE STREET
RIGHT OF WAY TO THE ORLEANS STREET RIGHT OF WAY TOTAL LENGTH IS 381'.



SCALE: 1"=100'

LEGEND



VACATION AND CONVERSION TO EASEMENT LIMITS