

Janice M. Winfrey
City Clerk

City of Detroit
OFFICE OF THE CITY CLERK

Andre P. Gilbert II
Deputy City Clerk

DEPARTMENT PETITION REFERENCE COMMUNICATION

To: The Department or Commission Listed Below

From: Janice M Winfrey, Detroit City Clerk

The following petition is herewith referred to you for report and recommendation to the City Council.

In accordance with that body's directive, kindly return the same with your report in duplicate within four (4) weeks.

Petition No.	2025-214
Name of Petitioner	EBE BETHUNE LLC
Description of Petition	Petition for encroachment into the southern part of E. Bethune St. for berm parking. The berm parking will consist of parallel parking spaces along E. Bethune St.
Type of Petition	Alley Vacation/Encroachment/Utility Vacation
Submission Date	08/20/25
Concerned Departments	Buildings, Safety Engineering, and Environmental Department (BSEED), Detroit Department of Transportation (DDOT), Detroit Fire Department (DFD), Detroit Health Department (DHD), General Services Department (GSD), Media Services Department, Municipal Parking Department, Police Department (DPD)
Petitioner Contact	Peter N. Pentescu Studio Detroit 2040 Park Ave. Suite 200 Detroit, MI 48226 P: (586) 747-9717 pete@studio-detroit.com



**CITY OF DETROIT
DEPARTMENT OF PUBLIC WORKS
CITY ENGINEERING DIVISION**

**COLEMAN A. YOUNG MUNICIPAL CENTER
2 WOODWARD AVE. SUITE 601
DETROIT, MICHIGAN 48226
PHONE: (313) 224-3949 TTY: 711
WWW.DETROITMI.GOV**

To: Clerk's Office
From: The Department of Public Works
City Engineering Division
MapsandRecordsBureau@DetroitMI.Gov
(313) 224-3970

Petitioner:
EBE BETHUNE LLC
210 E. Bethune St.
Detroit, MI, 48226

On behalf of the above-mentioned petitioner the Department of Public Works: City Engineering Division is submitting a petition request for the action below. The petitioner has received a project consultation from the Department of Public Works: City Engineering Division and has been advised the following:

Type of action recommended:

Petition for encroachment into the southern part of E. Bethune St. for berm parking. The berm parking will consist of parallel parking spaces along E. Bethune St.

Raven Wright
Supervisor of Maps & Records
Department of Public Works
City Engineering Division
313-224-3985



CITY OF DETROIT
DEPARTMENT OF PUBLIC WORKS
CITY ENGINEERING DIVISION

COLEMAN A. YOUNG MUNICIPAL CENTER
2 WOODWARD AVE. SUITE 601
DETROIT, MICHIGAN 48226
PHONE: (313) 224-3949 TTY: 711
WWW.DETROITMI.GOV

STUDIO**DETROIT**
ARCHITECTS

May 29, 2025

City of Detroit Right of Way Management

RE: Kode Labs Renovation
210 Bethune Street
Detroit, Michigan 48202
ARCHITECT'S PROJECT NO. 1943

To Whom it May Concern,

We are submitting a Right of Way Petition to add parallel parking in the berm at 210 Bethune Street. The client is seeking to renovate the existing historic structure to create new office space as part of Building Permit application BLD2024-02457. As part of the renovation, the client is making site improvements including the provision of off-street parking. Due to the site constraints and the required number of parking spaces, the client seeks to add berm parking in the Bethune Right of Way. The encroachment of the proposed berm parking is approximately 25' deep x 165' wide. This application seeks the approval of this encroachment.

Please feel free to contact us if you require any additional information in relation to this request.
Sincerely,

Peter N. Pentescu
Studio Detroit
2040 Park Ave, Suite 200
Detroit, MI 48226
pete@studio-detroit.com
586.747.9717



CITY OF DETROIT
DEPARTMENT OF PUBLIC WORKS
CITY ENGINEERING DIVISION

COLEMAN A. YOUNG MUNICIPAL CENTER
2 WOODWARD AVE. SUITE 601
DETROIT, MICHIGAN 48226
PHONE: (313) 224-3949 TTY: 711
WWW.DETROITMI.GOV





**CITY OF DETROIT
DEPARTMENT OF PUBLIC WORKS
CITY ENGINEERING DIVISION**

**COLEMAN A. YOUNG MUNICIPAL CENTER
2 WOODWARD AVE. SUITE 601
DETROIT, MICHIGAN 48226
PHONE: (313) 224-3949 TTY: 711
WWW.DETROITMI.GOV**



CITY OF DETROIT
DEPARTMENT OF PUBLIC WORKS
CITY ENGINEERING DIVISION

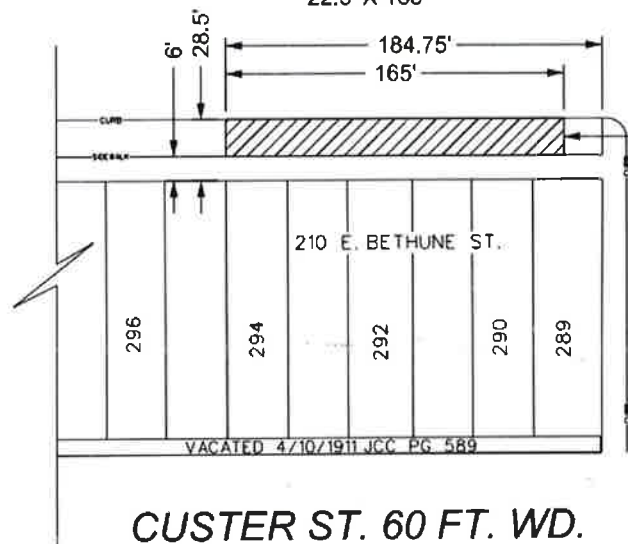
COLEMAN A. YOUNG MUNICIPAL CENTER
2 WOODWARD AVE. SUITE 601
DETROIT, MICHIGAN 48226
PHONE: (313) 224-3949 TTY: 711
WWW.DETROITMI.GOV

MAP-25-56



E. BETHUNE ST. 80 FT. WD.

PROPOSED PARKING AREA
22.5' X 165'

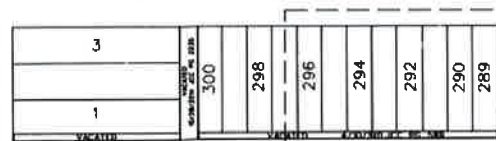


JOHN R. ST. 60 FT. WD.

CUSTER ST. 60 FT. WD.

WOODWARD AVE. 120 FT. WD.

E. BETHUNE ST. 80 FT. WD.



CUSTER ST. 60 FT. WD.

JOHN R. ST. 60 FT. WD.



- REQUEST ENCROACHMENT
(For Parking Area)

(FOR OFFICE USE ONLY)

CARTO 31 A

B					
A					
DESCRIPTION	REV	CHKD	APP	DATE	
AP	LC / TS				
DATE	APPROVED				
06-03-2025	GE				

REQUEST ENCROACHMENT
INTO E. BETHUNE ST. 80 FT. WD.
AT 210 E. BETHUNE ST.

CITY OF DETROIT
CITY ENGINEERING DIVISION
SURVEY BUREAU

JOB NO. 25-56

DRWG. NO.



**CITY OF DETROIT
DEPARTMENT OF PUBLIC WORKS
CITY ENGINEERING DIVISION**

**COLEMAN A. YOUNG MUNICIPAL CENTER
2 WOODWARD AVE. SUITE 601
DETROIT, MICHIGAN 48226
PHONE: (313) 224-3949 TTY: 711
WWW.DETROITMI.GOV**
