

# City of Detroit

Janice M. Winfrey  
City Clerk

OFFICE OF THE CITY CLERK

Andre P. Gilbert II  
Deputy City Clerk

## DEPARTMENT PETITION REFERENCE COMMUNICATION

*To: The Department or Commission Listed Below*

*From: Janice M Winfrey, Detroit City Clerk*

---

The following petition is herewith referred to you for report and recommendation to the City Council.

In accordance with that body's directive, kindly return the same with your report in duplicate within four (4) weeks.

---

Petition No.	2025-210
Name of Petitioner	Himelhoch 2016 LDHA LLC
Description of Petition	Petition to request encroachment into the easterly part of Washington Blvd. for an onsite advertising sign by the property owner Himelhoch 2016 LDHA LLC the sign will be adjacent to property commonly known as 1545 Washington Blvd. The new tenant will be the Museum of Illusions.
Type of Petition	<b>Alley Vacation/Encroachment/Utility Vacation</b>
Submission Date	08/11/25
Concerned Departments	Buildings, Safety Engineering, and Environmental Department (BSEED), Detroit Department of Transportation (DDOT), Detroit Fire Department (DFD), Detroit Health Department (DHD), General Services Department (GSD), Media Services Department, Municipal Parking Department, Police Department (DPD)
Petitioner Contact	Metro Signs & Lighting Kevin Deters 11444 Kaltz Ave Warren, MI 48089 P: (586) 759-2700



CITY OF DETROIT  
DEPARTMENT OF PUBLIC WORKS  
CITY ENGINEERING DIVISION

COLEMAN A. YOUNG MUNICIPAL CENTER  
2 WOODWARD AVE. SUITE 601  
DETROIT, MICHIGAN 48226  
PHONE: (313) 224-3949 TTY: 711  
WWW.DETROITMI.GOV

---

To: Clerk's Office  
From: The Department of Public Works  
City Engineering Division  
MapsandRecordsBureau@DetroitMI.Gov  
(313) 224-3970

Petitioner:  
Himelhoch 2016 LDHA LLC  
20250 Harper Ave.  
Harper Woods, MI 48225

On behalf of the above-mentioned petitioner the Department of Public Works: City Engineering Division is submitting a petition request for the below mentioned action. The petitioner has received a project consultation from the Department of Public Works: City Engineering Division and has been advised the following:

Type of action recommended:

Petition to request encroachment into the easterly part of Washington Blvd. for an onsite advertising sign by the property owner Himelhoch 2016 LDHA LLC the sign will be adjacent to property commonly known as 1545 Washington Blvd. The new tenant will be the Museum of Illusions.

Raven Wright  
Supervisor of Maps & Records  
Department of Public Works  
City Engineering Division  
313-224-3985



**CITY OF DETROIT  
DEPARTMENT OF PUBLIC WORKS  
CITY ENGINEERING DIVISION**

**COLEMAN A. YOUNG MUNICIPAL CENTER  
2 WOODWARD AVE. SUITE 601  
DETROIT, MICHIGAN 48226  
PHONE: (313) 224-3949 TTY: 711  
[WWW.DETROITMI.GOV](http://WWW.DETROITMI.GOV)**

---



CITY OF DETROIT  
DEPARTMENT OF PUBLIC WORKS  
CITY ENGINEERING DIVISION

COLEMAN A. YOUNG MUNICIPAL CENTER  
2 WOODWARD AVE. SUITE 601  
DETROIT, MICHIGAN 48226  
PHONE: (313) 224-3949 TTY: 711  
WWW.DETROITMI.GOV



DATE: 5/27/25  
TO: City of Detroit DPW  
FROM: Kevin Deters  
Metro Signs & Lighting  
RE: Encroachment for projecting sign at "Museum of Illusions"  
1545 Woodward  
SGN2025-00135

We are applying for a permit for a projecting sign on the west elevation along Washington Blvd. The sign is 2.29' x 2.29' (5.24 sq feet). The total projection is 27.5 inches from the building. The sign's underclearance is 9 feet.

Feel free to call me at (586)759-2700 if anything else is needed. Thank you for your assistance.

*Ki Deters* 5-27-25



CITY OF DETROIT  
DEPARTMENT OF PUBLIC WORKS  
CITY ENGINEERING DIVISION

COLEMAN A. YOUNG MUNICIPAL CENTER  
2 WOODWARD AVE, SUITE 601  
DETROIT, MICHIGAN 48226  
PHONE: (313) 224-3949 TTY: 711  
WWW.DETROITMI.GOV

N  
↑  
SHE Plan  
Google Maps

M.O.I.  
1545 Woodward Ave  
Detroit, MI 48226



Frontage Measurements  
100' - west facing Washington Blvd  
60' - east facing Woodward Ave  
160' total

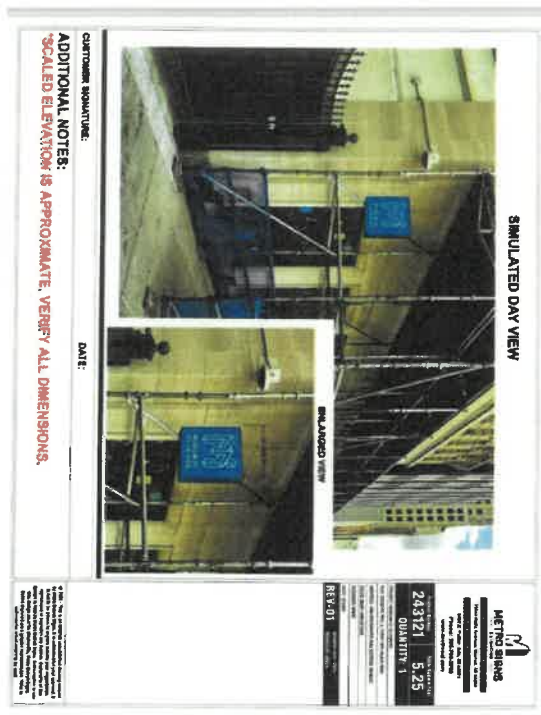
imagery ©2025 Airbus, Maxar Technologies, Map data ©2025 Google





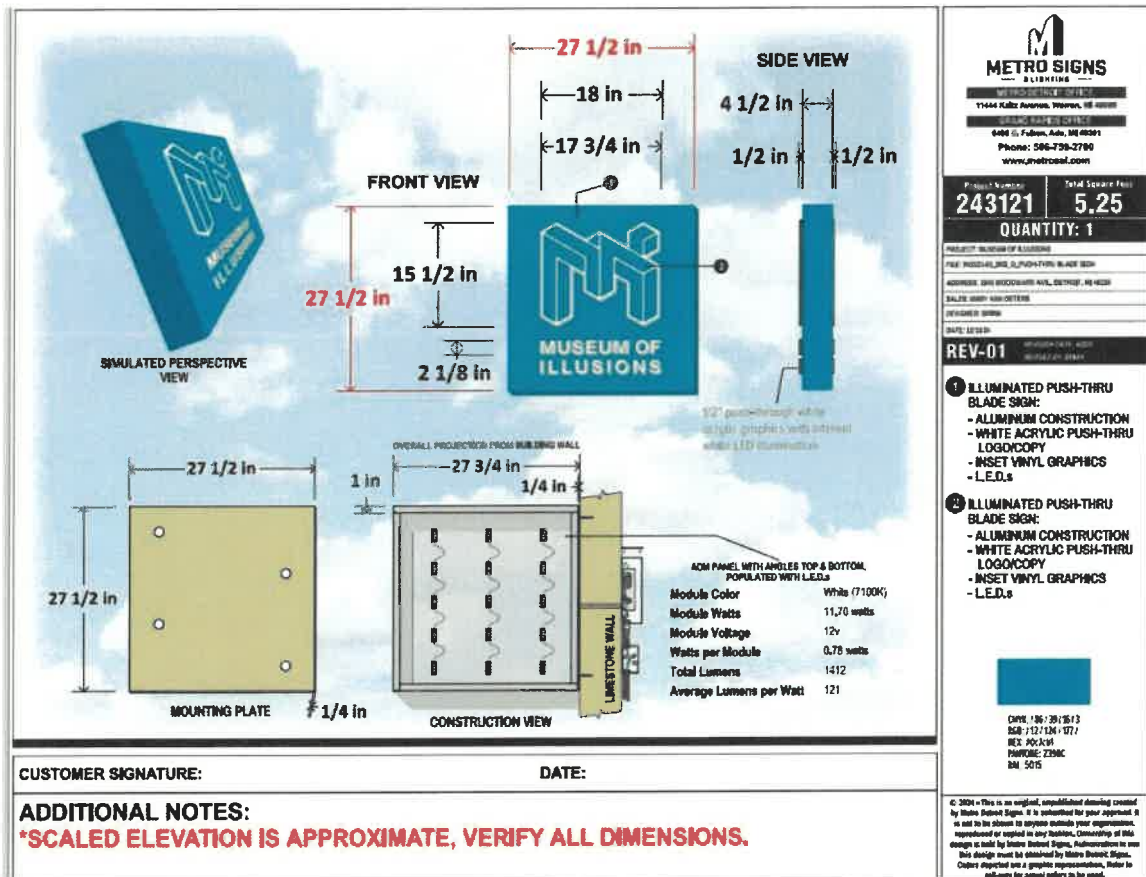
**COLEMAN A. YOUNG MUNICIPAL CENTER**  
**2 WOODWARD AVE. SUITE 601**  
**DETROIT, MICHIGAN 48226**  
**PHONE: (313) 224-3949 TTY: 711**  
**WWW.DETROITMI.GOV**

West elevation facing Washington Blvd  
 $25' h \times 100' w = 2,500 \text{ sq ft}$   
 = proposed projecting sign on the for left side





**COLEMAN A. YOUNG MUNICIPAL CENTER**  
**2 WOODWARD AVE. SUITE 601**  
**DETROIT, MICHIGAN 48226**  
**PHONE: (313) 224-3949 TTY: 711**  
**WWW.DETROITMI.GOV**







CITY OF DETROIT  
DEPARTMENT OF PUBLIC WORKS  
CITY ENGINEERING DIVISION

COLEMAN A. YOUNG MUNICIPAL CENTER  
2 WOODWARD AVE. SUITE 601  
DETROIT, MICHIGAN 48226  
PHONE: (313) 224-3949 TTY: 711  
WWW.DETROITMI.GOV

MAP-25-54

WASHINGTON BLVD. 195 FT. WD.

2.29'

0.5'

PROPOSED BLADE SIGN  
2.29' X 2.29'  
(9' TO 11.29' ABOVE GRADE)

ALLEY

1545 WOODWARD AVE.  
(WEST FACING WASHINGTON BLVD.)

CLIFFORD ST. 60 FT. WD.

PARK AVE. 60 FT. WD.

WASHINGTON BLVD. 195 FT. WD.

WOODWARD AVE. 120 FT. WD.

CLIFFORD ST. 60 FT. WD.

16, 17, 19, 20, 21, 22, 24, 26, 27, 82

1545 WOODWARD AVE.

- REQUEST ENCROACHMENT  
(For Proposed Blade Sign)

(FOR OFFICE USE ONLY)

CARTO 28 B

REQUEST ENCROACHMENT INTO WASHINGTON BLVD. AT 1545 WOODWARD AVE.			
CITY OF DETROIT CITY ENGINEERING DIVISION SURVEY BUREAU			
JOB NO. 25-54			
DATE 06-04-2025			
APPROVED GE			