



CITY OF DETROIT
DEPARTMENT OF PUBLIC WORKS
CITY ENGINEERING DIVISION

COLEMAN A. YOUNG MUNICIPAL CENTER
2 WOODWARD AVE. SUITE 601
DETROIT, MICHIGAN 48226
PHONE: (313) 224-3949 TTY: 711
WWW.DETROITMI.GOV

To: Clerk's Office
From: The Department of Public Works
City Engineering Division
MapsandRecordsBureau@DetroitMI.Gov
(313) 224-3970

Petitioner:
Himelhoch 2016 LDHA LLC
20250 Harper Ave.
Harper Woods, MI 48225

On behalf of the above-mentioned petitioner the Department of Public Works: City Engineering Division is submitting a petition request for the below mentioned action. The petitioner has received a project consultation from the Department of Public Works: City Engineering Division and has been advised the following:

Type of action recommended:

Petition to request encroachment into the easterly part of Washington Blvd. for an onsite advertising sign by the property owner Himelhoch 2016 LDHA LLC the sign will be adjacent to property commonly known as 1545 Washington Blvd. The new tenant will be the Museum of Illusions.

Raven Wright
Supervisor of Maps & Records
Department of Public Works
City Engineering Division
313-224-3985



CITY OF DETROIT
DEPARTMENT OF PUBLIC WORKS
CITY ENGINEERING DIVISION

COLEMAN A. YOUNG MUNICIPAL CENTER
2 WOODWARD AVE. SUITE 601
DETROIT, MICHIGAN 48226
PHONE: (313) 224-3949 TTY: 711
WWW.DETROITMI.GOV



CITY OF DETROIT
DEPARTMENT OF PUBLIC WORKS
CITY ENGINEERING DIVISION

COLEMAN A. YOUNG MUNICIPAL CENTER
2 WOODWARD AVE. SUITE 601
DETROIT, MICHIGAN 48226
PHONE: (313) 224-3949 TTY: 711
WWW.DETROITMI.GOV



DATE: 5/27/25
TO: City of Detroit DPW
FROM: Kevin Deters
Metro Signs & Lighting
RE: Encroachment for projecting sign at "Museum of Illusions"
1545 Woodward
SGN2025-00135

We are applying for a permit for a projecting sign on the west elevation along Washington Blvd. The sign is 2.29' x 2.29' (5.24 sq feet). The total projection is 27.5 inches from the building. The sign's underclearance is 9 feet.

Feel free to call me at (586)759-2700 if anything else is needed. Thank you for your assistance.

Ki Deters 5-27-25

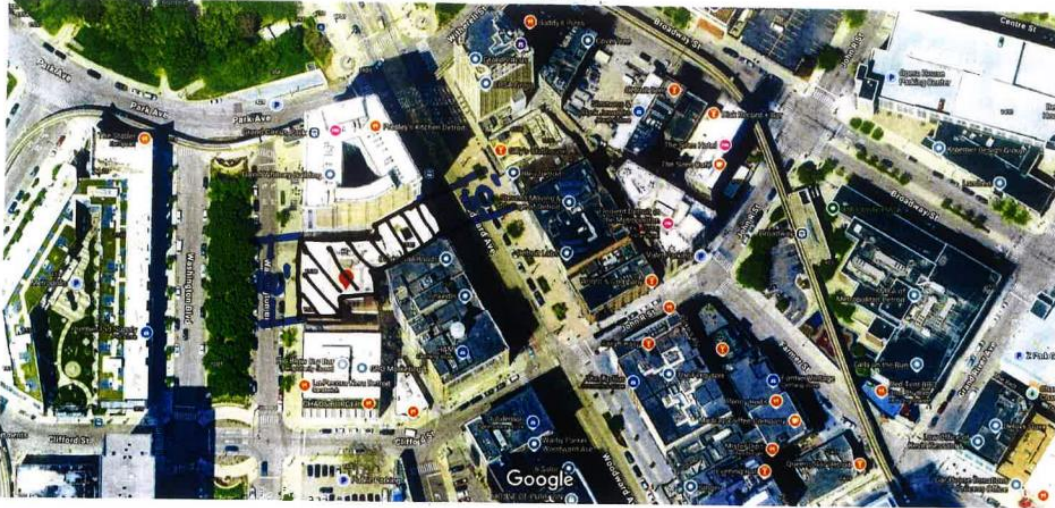


CITY OF DETROIT
DEPARTMENT OF PUBLIC WORKS
CITY ENGINEERING DIVISION

COLEMAN A. YOUNG MUNICIPAL CENTER
2 WOODWARD AVE. SUITE 601
DETROIT, MICHIGAN 48226
PHONE: (313) 224-3949 TTY: 711
WWW.DETROITMI.GOV

N
↑ SHE Plan
Google Maps

M.O.I.
1545 Woodward Ave
Detroit, MI 48226



Imagery ©2025 Airbus, Maxar Technologies, Map data ©2025 Google 50 ft

Frontage Measurements

100' - west facing Washington Blvd
60' - east facing Woodward Ave
160' total



West elevation facing Washington Blvd
25' h x 100' w = 2,500 ϕ
= Proposed projecting sign on the far left side



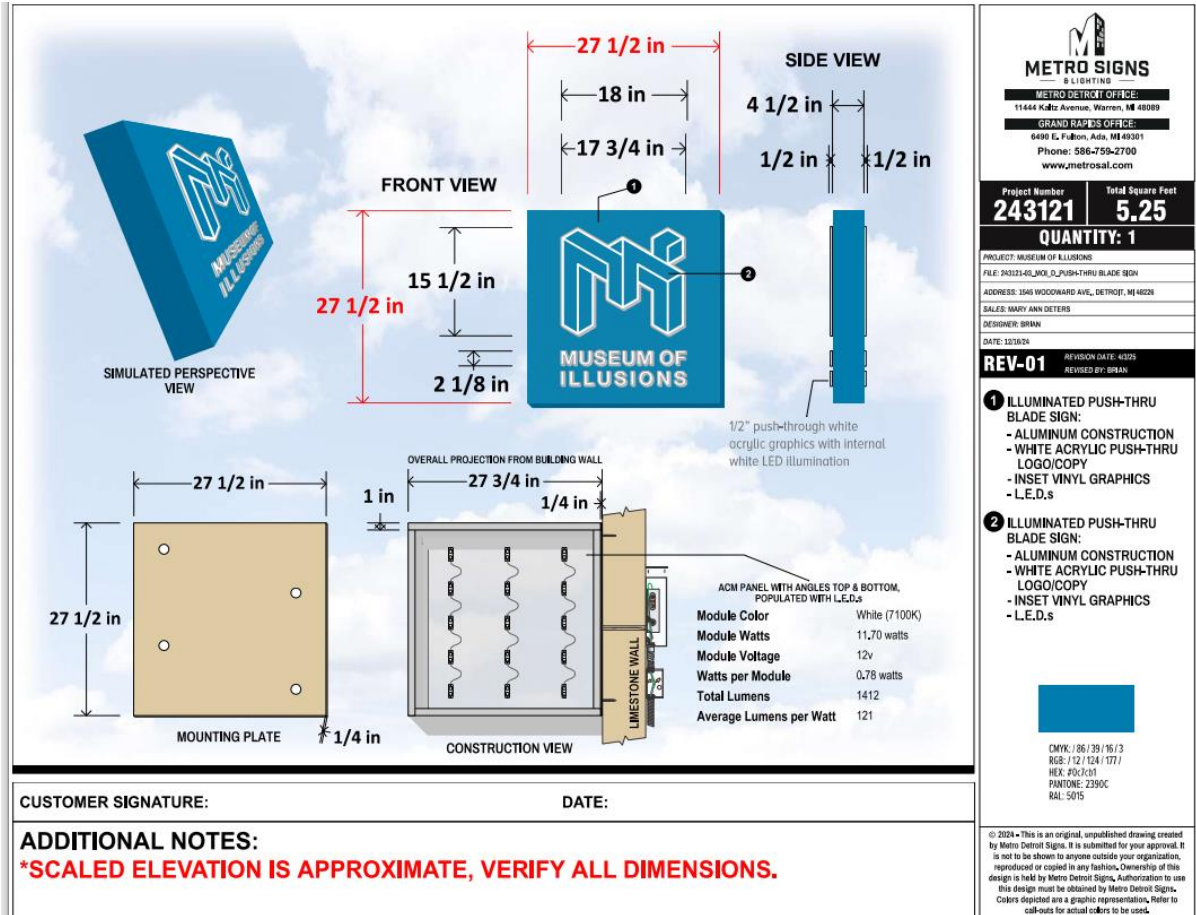
1/1

[illegible]



CITY OF DETROIT
DEPARTMENT OF PUBLIC WORKS
CITY ENGINEERING DIVISION

COLEMAN A. YOUNG MUNICIPAL CENTER
2 WOODWARD AVE. SUITE 601
DETROIT, MICHIGAN 48226
PHONE: (313) 224-3949 TTY: 711
WWW.DETROITMI.GOV





CITY OF DETROIT
DEPARTMENT OF PUBLIC WORKS
CITY ENGINEERING DIVISION

COLEMAN A. YOUNG MUNICIPAL CENTER
2 WOODWARD AVE. SUITE 601
DETROIT, MICHIGAN 48226
PHONE: (313) 224-3949 TTY: 711
WWW.DETROITMI.GOV

MAP-25-54

WASHINGTON BLVD. 195 FT. WD.

CLIFFORD ST. 60 FT. WD.

ALLEY

1545 WOODWARD AVE.
(WEST FACING WASHINGTON BLVD.)

PROPOSED BLADE SIGN
2.29' X 2.29'
(9' TO 11.29' ABOVE GRADE)

PARK AVE. 60 FT. WD.

WASHINGTON BLVD. 195 FT. WD.

WOODWARD AVE. 120 FT. WD.

CLIFFORD ST. 60 FT. WD.

1545 WOODWARD AVE.

19, 20, 21, 22, 24, 26, 27, 82, 16, 17

- REQUEST ENCROACHMENT
(For Proposed Blade Sign)

(FOR OFFICE USE ONLY)

CARTO 28 B

B					
A					
DESCRIPTION	REVISED	CHKD	APPD	DATE	
DRAWN BY	LC	CHECKED	AP/TS		
DATE	06-04-2025	APPROVED	GE		

REQUEST ENCROACHMENT
INTO WASHINGTON BLVD.
AT 1545 WOODWARD AVE.

CITY OF DETROIT CITY ENGINEERING DIVISION SURVEY BUREAU	
JOB NO.	25-54
DRWG. NO.	