



Central Services Facility

313-267-8000 • detroitmi.gov/DWSD

Date:

Petition Map:

- ☐ Outright Vacation
- ☐ Conversion to Easement

- ☐ Dedication
- ☐ Encroachment

☐ Berm Use

☐ Temporary Closing

The above petition has been received and reviewed by this office. Please see below for the review status as marked.

☐ Approved Subject to Attached Provisions

☐ Not Approved

☐ Revise and Resubmit

Attached is the DWSD provision related to the petition.

	Name	Title	Signature	Date
Reviewed by:			Mohammad Siddique	
Approved by:			Mohammad Siddique For Syed Ali	



DATE: 5/27/25

TO: City of Detroit DPW

FROM: Kevin Deters
Metro Signs & Lighting

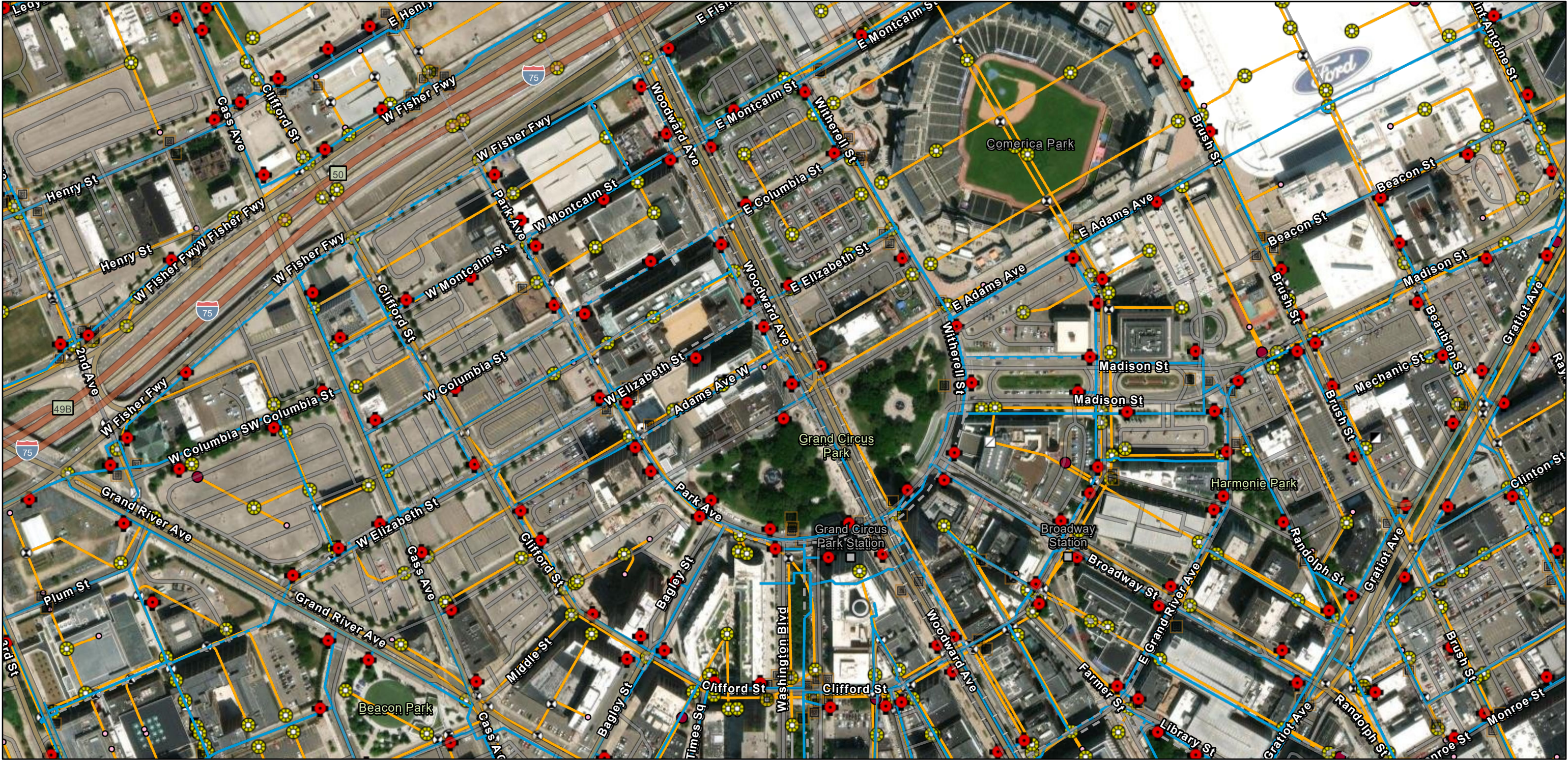
RE: Encroachment for projecting sign at "Museum of Illusions"
1545 Woodward
SGN2025-00135

We are applying for a permit for a projecting sign on the west elevation along Washington Blvd. The sign is 2.29' x 2.29' (5.24 sq feet). The total projection is 27.5 inches from the building. The sign's underclearance is 9 feet.

Feel free to call me at (586)759-2700 if anything else is needed. Thank you for your assistance.

Ki Deters 5-27-25

1545 Woodward



6/5/2025

- Distribution System Hydrant

Wastewater Catch Basin

Bulkhead/Cap

Wastewater Gravity Main

Distribution System Main

Wastewater Manhole

Material/Size Change

Active
- Wastewater Fitting
- Crown/Main Point
- Abandoned/Inactive/Retired

Active

Wastewater Lamp Hole

Wastewater Regulator

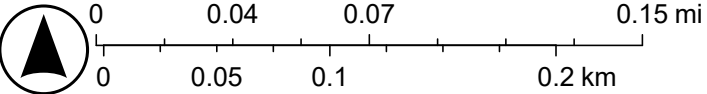
Abandoned

World Imagery

Bend/Slope Change

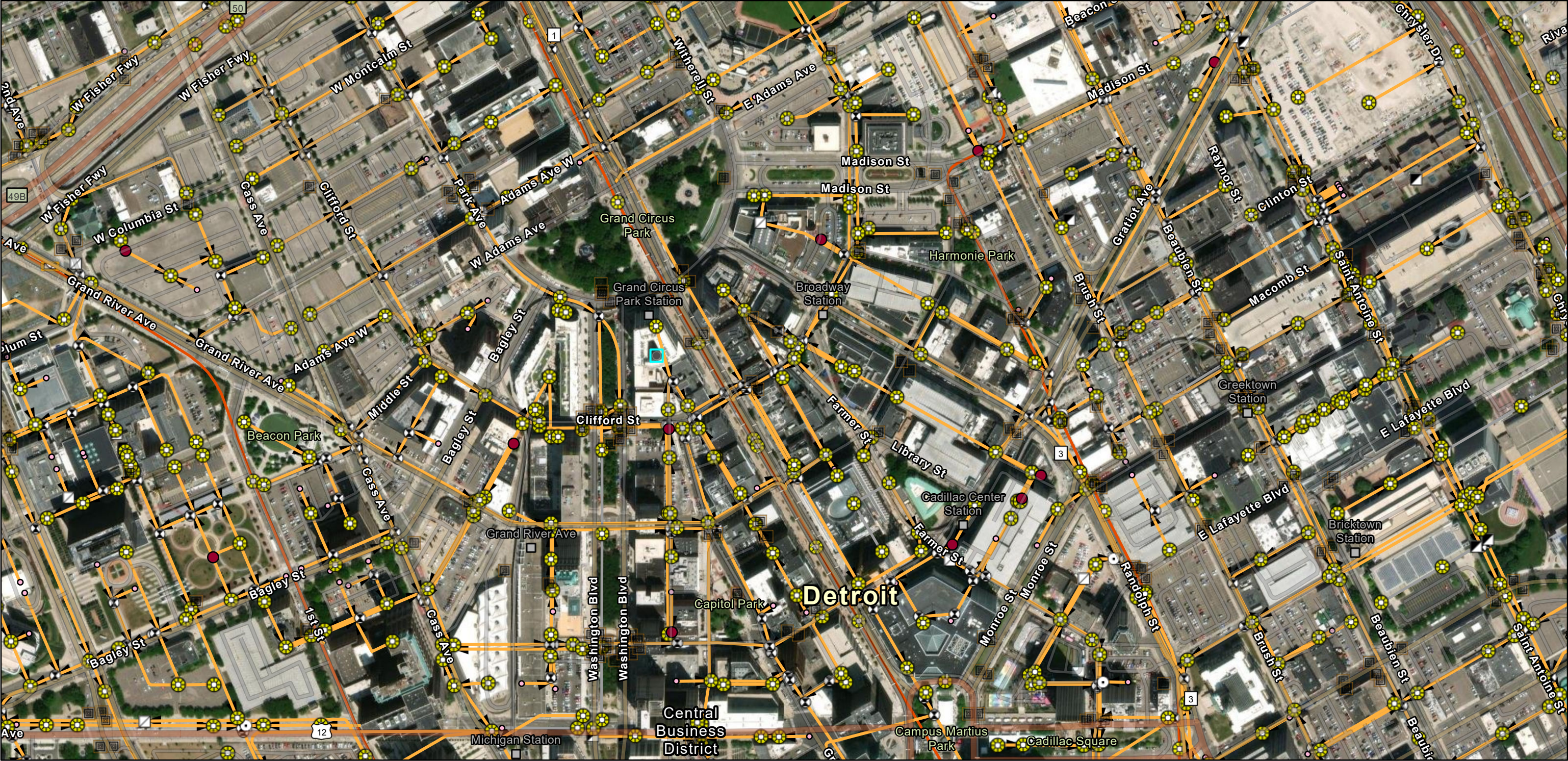
Blind Connection

Low Resolution 15m Imagery
High Resolution 60cm Imagery
High Resolution 30cm Imagery
Citations



DWSD, Sources: Esri, TomTom, Garmin, FAO, NOAA, USGS, © OpenStreetMap contributors, and the GIS User Community, Maxar

1545 Woodward



6/5/2025, 2:13:27 PM

Wastewater Catch Basin (DWSD)

Wastewater Lamp Hole (DWSD)

Wastewater Manhole (DWSD)

Wastewater Fitting (DWSD)

Bend/Slope Change

Blind Connection

Bulkhead/Cap

Material/Size Change

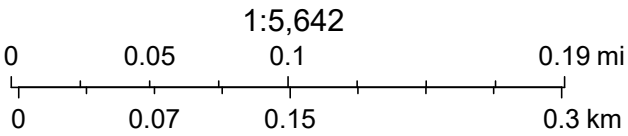
Crown/Main Point

Wastewater Gravity Main (DWSD)

Wastewater Mains (GLWA)

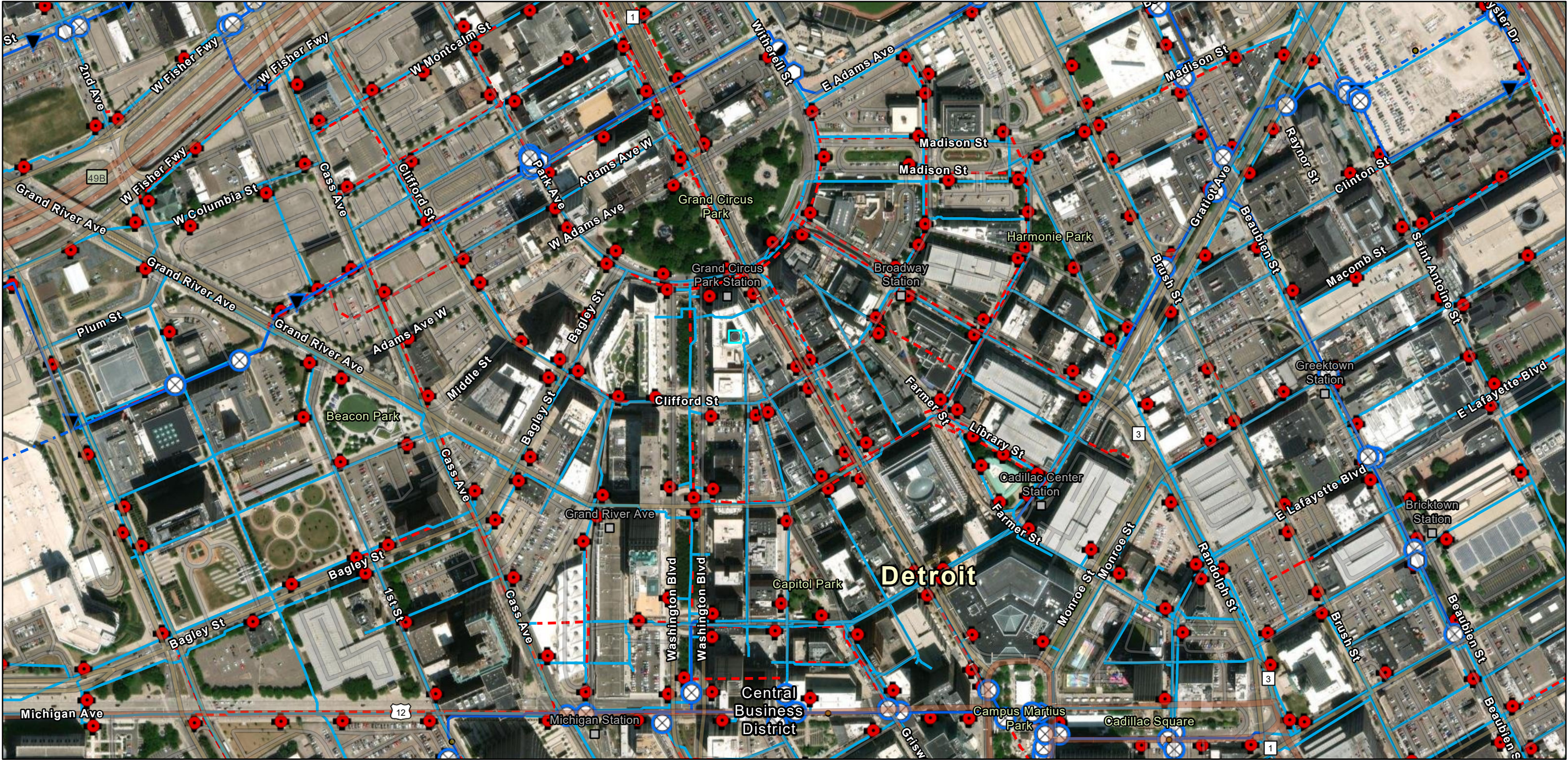
GLWA Gravity Main

DWSD Wastewater Flow Direction



Sources: Esri, TomTom, Garmin, FAO, NOAA, USGS, © OpenStreetMap contributors, and the GIS User Community, Maxar

1545 Woodward



6/5/2025, 2:13:33 PM

Transmission System Valves (GLWA)

- Blowoff
- Butterfly
- Gate

- Manual Air
- Pressure Reducing
- Tapping Sleeve

Transmission System Mains (GLWA)

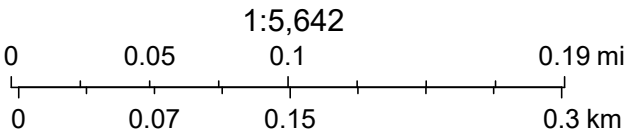
- Abandoned/Inactive Water Main
- Active Water Main

Distribution System Hydrant

- DWSD

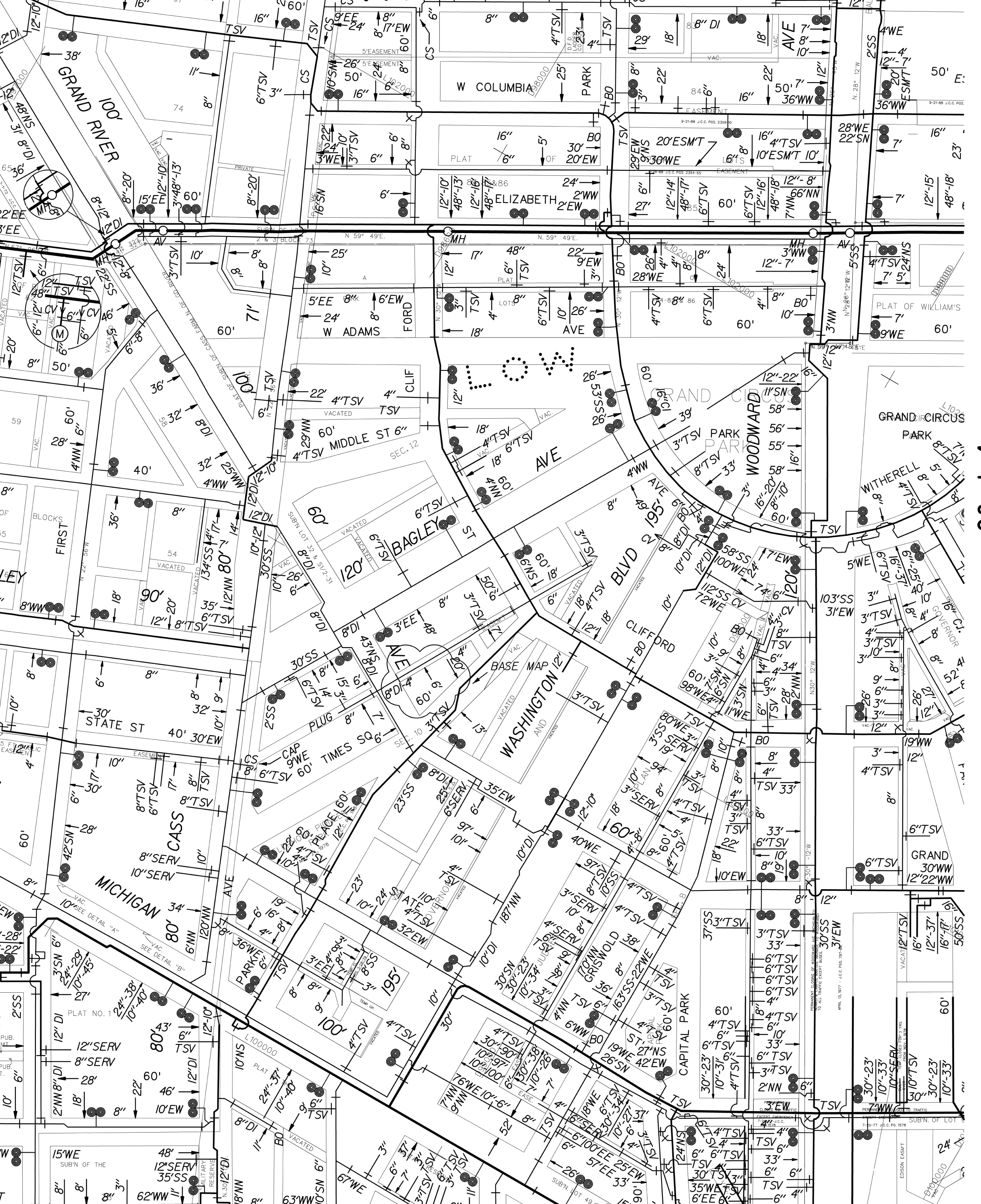
Distribution System Main

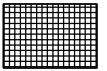
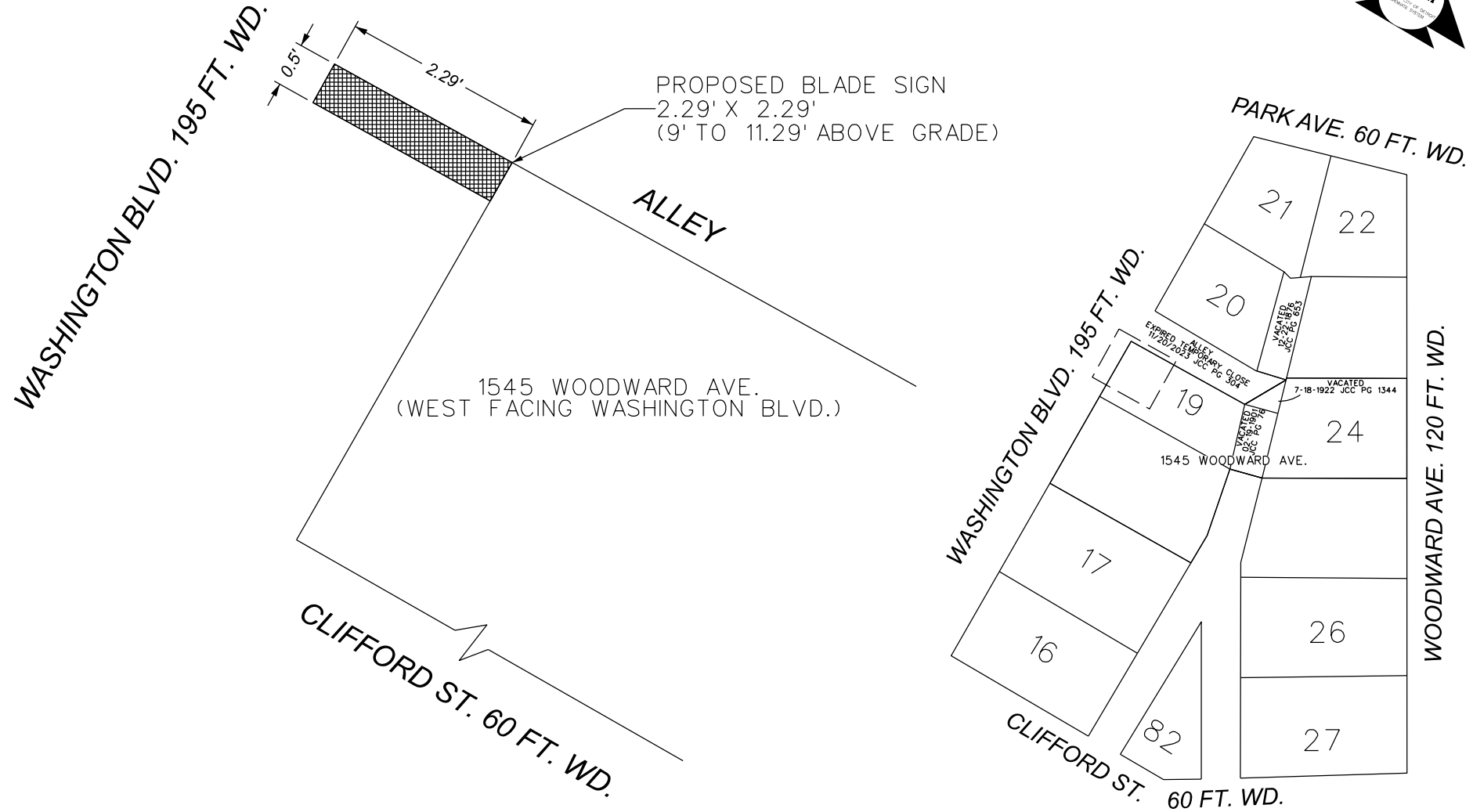
- Active
- Abandoned



Sources: Esri, TomTom, Garmin, FAO, NOAA, USGS, © OpenStreetMap contributors, and the GIS User Community, Maxar







- REQUEST ENCROACHMENT
(For Proposed Blade Sign)

(FOR OFFICE USE ONLY)

CARTO 28 B

REQUEST ENCROACHMENT
INTO WASHINGTON BLVD.
AT 1545 WOODWARD AVE.

CITY OF DETROIT
CITY ENGINEERING DIVISION
SURVEY BUREAU

JOB NO. 25-54

DRWG. NO.

B					
A					
DESCRIPTION		DRWN	CHKD	APPD	DATE
REVISIONS					
DRAWN BY		CHECKED		AP/TS	
DATE		APPROVED			
06-04-2025		GE			

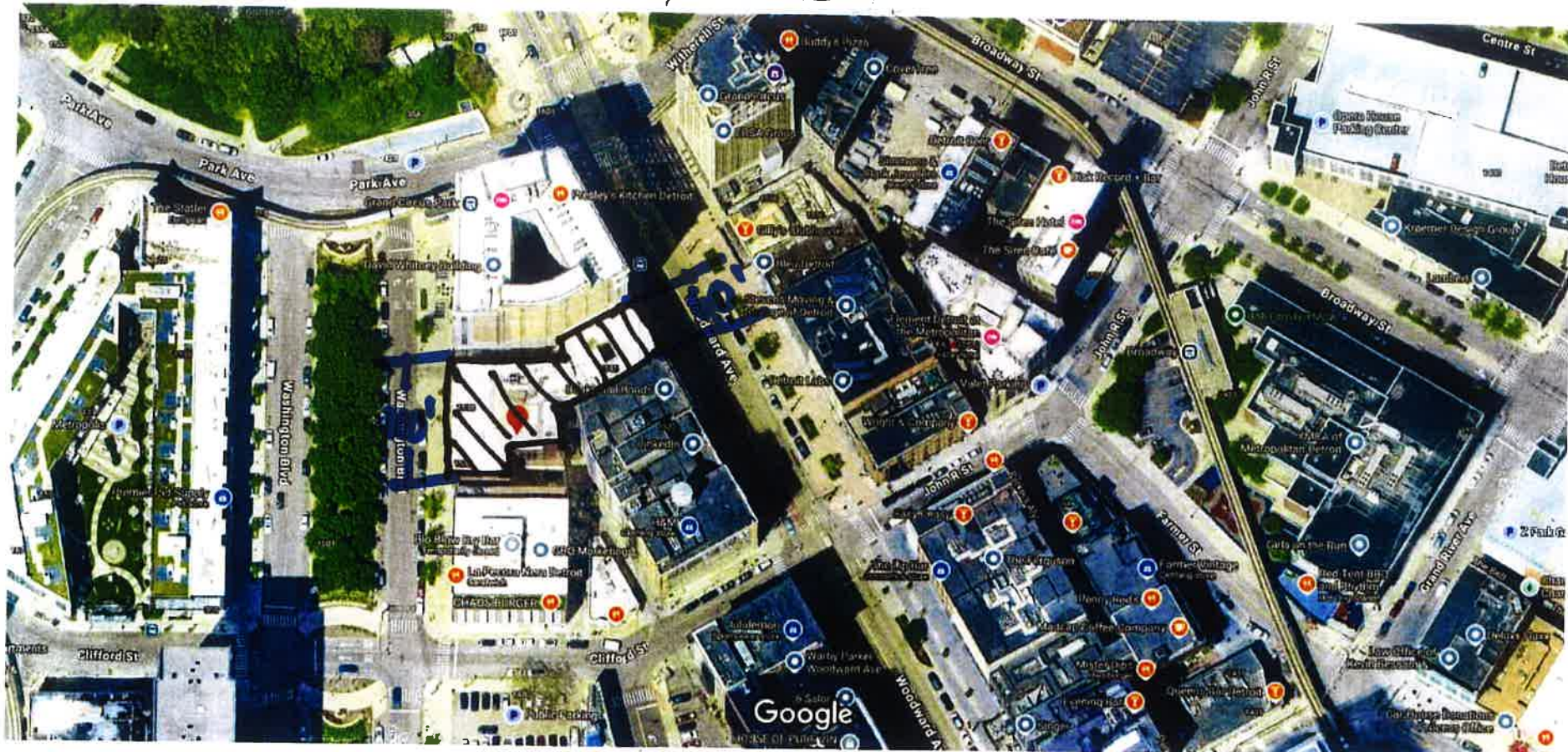
West elevation facing Washington Blvd
 $25' \text{ h} \times 100' \text{ w} = 2,500 \text{ sf}$

● = Proposed projecting sign on the far left side



N
↑ SHE Plan
Google Maps

M.O.I.
1545 Woodward Ave
Detroit, MI 48226



Imagery ©2025 Airbus, Maxar Technologies, Map data ©2025 Google 50 ft

Frontage Measurements

100' - west facing Washington Blvd
60' - east facing Woodward Ave

160' total



SIMULATED DAY VIEW



ENLARGED VIEW



METRO SIGNS
S LIGHTING

METRO DETROIT OFFICE:

11444 Keltz Avenue, Warren, MI 48089

GRAND RAPIDS OFFICE:

6490 E. Fulton, Ada, MI 49301

Phone: 586-759-2700

www.metrodal.com

Project Number

243121

Total Square Feet

5.25

QUANTITY: 1

PROJECT: MUSEUM OF ILLUSIONS

FILE: 243121-03_MOI_O_PUSH-THRU BLADE SIGN

ADDRESS: 1546 WOODWARD AVE., DETROIT, MI 48228

SALES: MARY ANN DETERS

DESIGNER: BRIAN

DATE: 12/18/24

REV-01

REVISION DATE: 4/3/25

REVISED BY: BRIAN

CUSTOMER SIGNATURE:

DATE:

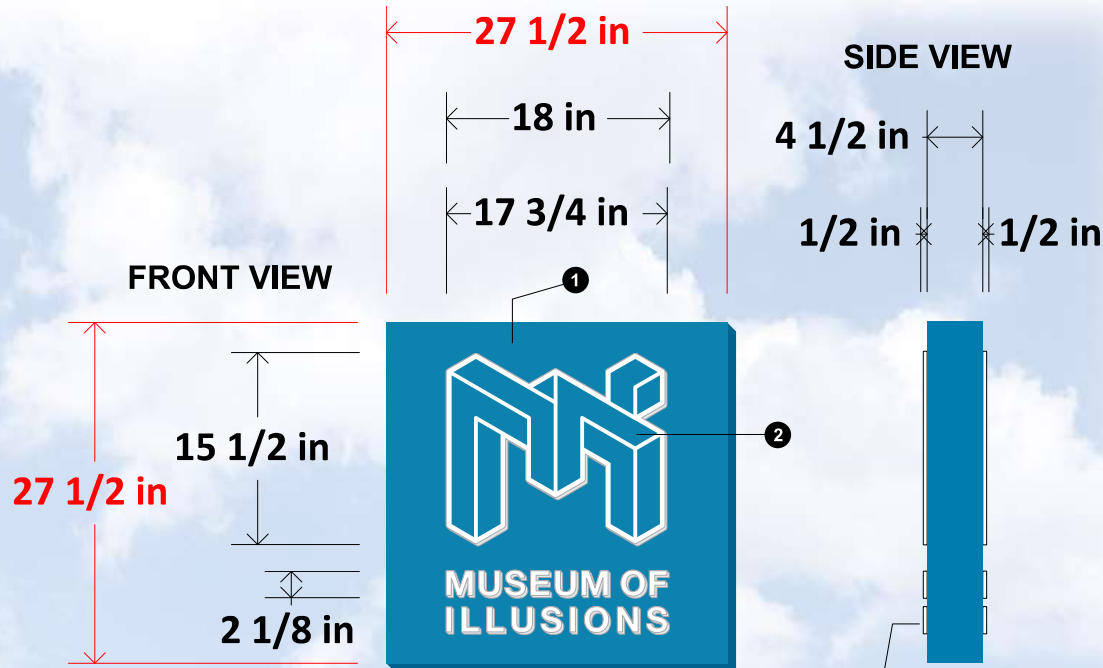
ADDITIONAL NOTES:

***SCALED ELEVATION IS APPROXIMATE, VERIFY ALL DIMENSIONS.**

© 2024 - This is an original, unpublished drawing created by Metro Detroit Signs. It is submitted for your approval. It is not to be shown to anyone outside your organization, reproduced or copied in any fashion. Ownership of this design is held by Metro Detroit Signs. Authorization to use this design must be obtained by Metro Detroit Signs. Colors depicted are a graphic representation. Refer to call-outs for actual colors to be used.

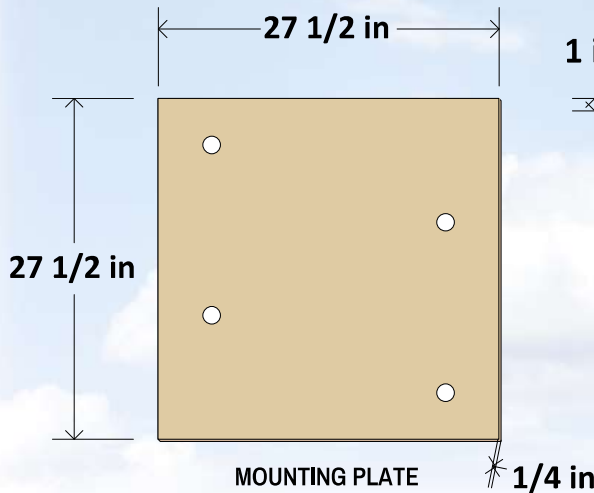


SIMULATED PERSPECTIVE VIEW

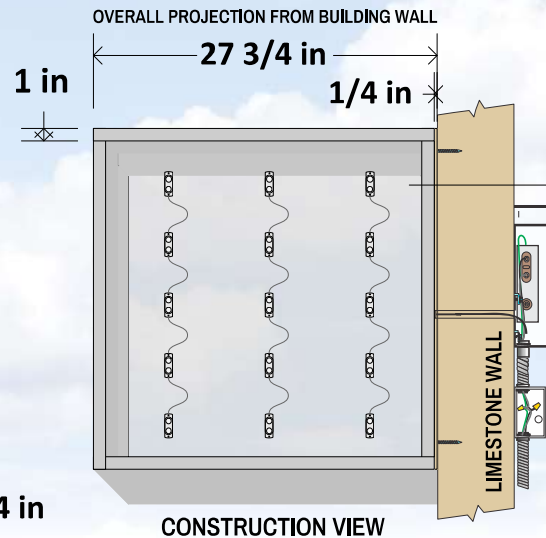


FRONT VIEW

SIDE VIEW



MOUNTING PLATE



CONSTRUCTION VIEW

1/2" push-through white acrylic graphics with internal white LED illumination

ACM PANEL WITH ANGLES TOP & BOTTOM, POPULATED WITH L.E.D.s

Module Color	White (7100K)
Module Watts	11.70 watts
Module Voltage	12v
Watts per Module	0.78 watts
Total Lumens	1412
Average Lumens per Watt	121

Project Number	Total Square Feet
243121	5.25

QUANTITY: 1

PROJECT: MUSEUM OF ILLUSIONS

FILE: 243121-03_MOI_D_PUSH-THRU BLADE SIGN

ADDRESS: 1545 WOODWARD AVE., DETROIT, MI 48226

SALES: MARY ANN DETERS

DESIGNER: BRIAN

DATE: 12/16/24

REV-01

REVISION DATE: 4/3/25
REVISED BY: BRIAN

- 1 ILLUMINATED PUSH-THRU BLADE SIGN:**
 - ALUMINUM CONSTRUCTION
 - WHITE ACRYLIC PUSH-THRU LOGO/COPY
 - INSET VINYL GRAPHICS
 - L.E.D.s
- 2 ILLUMINATED PUSH-THRU BLADE SIGN:**
 - ALUMINUM CONSTRUCTION
 - WHITE ACRYLIC PUSH-THRU LOGO/COPY
 - INSET VINYL GRAPHICS
 - L.E.D.s



CMYK: / 86 / 39 / 16 / 3
RGB: / 12 / 124 / 177 /
HEX: #0c7cb1
PANTONE: 2390C
RAL: 5015

CUSTOMER SIGNATURE:

DATE:

ADDITIONAL NOTES:

***SCALED ELEVATION IS APPROXIMATE, VERIFY ALL DIMENSIONS.**



City of Detroit
Department of Public Works
City Engineering Division

COLEMAN A. YOUNG MUNICIPAL CENTER
2 Woodward Ave. Suite 601
Detroit, Michigan 48226
Phone: (313) 224-3949 TTY: 711
www.detroitmi.gov

WRITTEN ACCEPTANCE OF THE TERMS AND CONDITIONS OF
DETROIT CITY COUNCIL RESOLUTION
PETITION NUMBER , ADOPTED

Karin Detwors at Metro Detroit Signs, whose address is
11444 Kalfz Ave Warren MI 48089, (hereinafter referred to as the "Permittee") do hereby accept the terms and conditions of the City Council Resolution granting Petition Number , and agrees to comply with its requirements; and further, that pursuant to the said Resolution, Permittee does hereby agree to defend, indemnify and save harmless the City of Detroit from any and all claims, liabilities, obligations, penalties, costs, charges, demands, losses, damages, or expenses (including without limitation, fees, and expenses of attorneys, expert witness and other consultants) that may be imposed upon, incurred by or asserted against the City of Detroit or its departments, officers, employees, or agents by reason of the issuance of said permit(s), or the performance or non-performance by the Permittee of the terms of the permit(s) hereof, or that may rise out of its activities described in said Resolution by Permittee and its personnel, agents, representatives and employees.

Permittee agrees to waive, release and discharge the City of Detroit or its departments, officers, employees, or agents from any and all liability, claims, demands, and causes of action whatsoever, legal and equitable, because of damages, losses, or injuries to Permittee or Permittee's property or both, arising from or related to Permittee's activities described in said Resolution. Permittee agrees and covenants not to sue the City of Detroit or its departments, officers, employees, or agents, and to refrain from instituting, continuing, presenting, subrogating, collecting or in any way aiding or proceeding upon any claims, judgments, debts, causes of action, suits and proceedings of any kind at law or in equity arising from or related to Permittee's activities described in said Resolution.

Date June 5, 20 25

Permittee Signature: 