

Janice M. Winfrey
City Clerk

City of Detroit
OFFICE OF THE CITY CLERK

Andre P. Gilbert II
Deputy City Clerk

DEPARTMENT PETITION REFERENCE COMMUNICATION

To: The Department or Commission Listed Below

From: Janice M Winfrey, Detroit City Clerk

The following petition is herewith referred to you for report and recommendation to the City Council.

In accordance with that body's directive, kindly return the same with your report in duplicate within four (4) weeks.

Petition No.	2025-201
Name of Petitioner	Olympia Development of Michigan, LLC
Description of Petition	Petition to request outright vacation a portion of W. Columbia St., in the block bounded by W. Elizabeth St., W. Montcalm St., Park Ave., and Woodward Ave.
Type of Petition	Alley Vacation/Encroachment/Utility Vacation
Submission Date	07/23/25
Concerned Departments	Media Services, Building & Safety Engineering, Police Department, Fire Department, Municipal Parking Department, Transportation Department, Health Department, General Services Department
Petitioner Contact	Sean Coleshill Project Engineer Giffels Webster (Ph) 313-962-4442 scoleshill@giffelswebster.com



**CITY OF DETROIT
DEPARTMENT OF PUBLIC WORKS
CITY ENGINEERING DIVISION**

**COLEMAN A. YOUNG MUNICIPAL CENTER
2 WOODWARD AVE. SUITE 601
DETROIT, MICHIGAN 48226
PHONE: (313) 224-3949 TTY: 711
WWW.DETROITMI.GOV**

To: Clerk's Office
From: The Department of Public Works
City Engineering Division
MapsandRecordsBureau@DetroitMI.Gov
(313) 224-3970

Petitioner:
Olympia Development of Michigan, LLC
2211 Woodward Ave.
Detroit, MI 48201

On behalf of the above-mentioned petitioner the Department of Public Works: City Engineering Division is submitting a petition request for the below mentioned action. The petitioner has received a project consultation from the Department of Public Works: City Engineering Division and has been advised the following:

Type of action recommended:

Petition to request outright vacation a portion of W. Columbia St., in the block bounded by W. Elizabeth St., W. Montcalm St., Park Ave., and Woodward Ave.

Georgine Gersdorff
Manager II
Department of Public Works
City Engineering Division
313-224-3985



**CITY OF DETROIT
DEPARTMENT OF PUBLIC WORKS
CITY ENGINEERING DIVISION**

**COLEMAN A. YOUNG MUNICIPAL CENTER
2 WOODWARD AVE. SUITE 601
DETROIT, MICHIGAN 48226
PHONE: (313) 224-3949 TTY: 711
WWW.DETROITMI.GOV**



June 18, 2024

**DPW, City Engineering Division
200 Coleman A. Young Municipal Center
2 Woodward Avenue
Detroit, Michigan 48226**

RE: Giffels Webster – Request for an outright vacation into the reserved easement within the former public right-of-way of W. Columbia St (50 feet wide) between Woodward Ave (120 feet wide) and Park Avenue (60 feet wide).

Giffels Webster, 28 W. Adams, Suite 1200, Detroit, Michigan 48226 on behalf of Olympia Development of Michigan, LLC, 2211 Woodward Ave, Detroit, MI 48201, respectfully requests the following encroachment into the right-of-way within the block bounded by Woodward Ave (120 feet wide), Park Avenue (60 feet wide), W. Montcalm (60 feet wide), and the W. Elizabeth (60 feet wide) in the City of Detroit:

- An outright vacation into the Columbia Street Easement (50 feet wide) that starts 117.6 feet west of the northeast corner of the parcel of 2125 Woodward Ave and extends 320 feet west, ending at the Park Avenue (60 feet wide) right-of-way. This outright vacation will also extend 9.0 feet into the Columbia Street (50 feet wide) right-of-way. The vacation will be reduced to 6.9 feet of width from 191.3' feet north to 208.0 feet north of the southwest corner of the 2210 Park Avenue parcel, to accommodate DTE electric infrastructure.

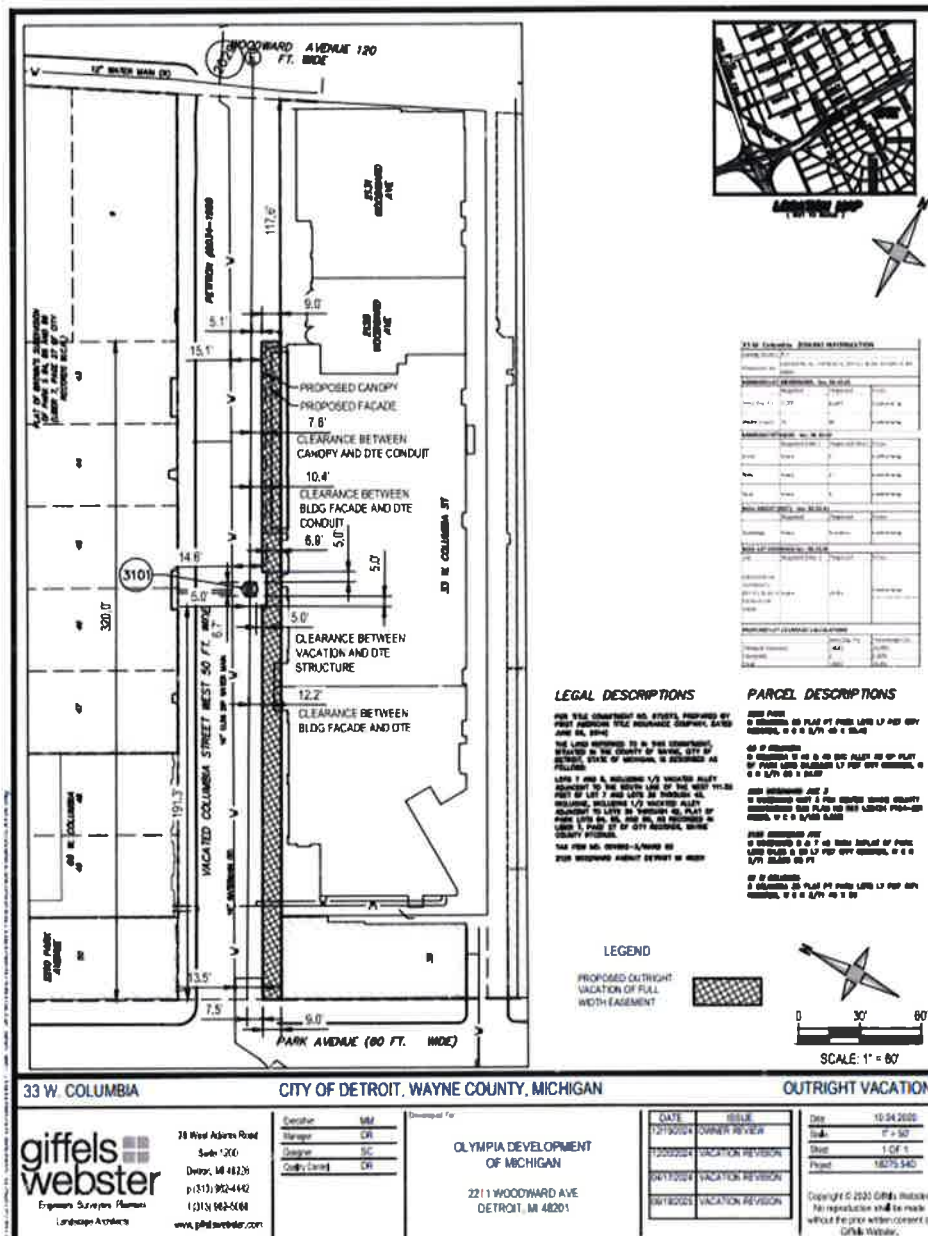
Please refer to the attached detailed sketch for further clarification.

If you should have any questions, please do not hesitate to contact me at (P) 313.962.4442 or at scoleshill@giffelswebster.com.

Respectfully,

**Sean Coleshill
Project Engineer
Giffels Webster**

28 W. Adams, Suite 1200 | Detroit, Michigan 48226 | Phone (313) 962-4442 | Fax (313) 962-5068





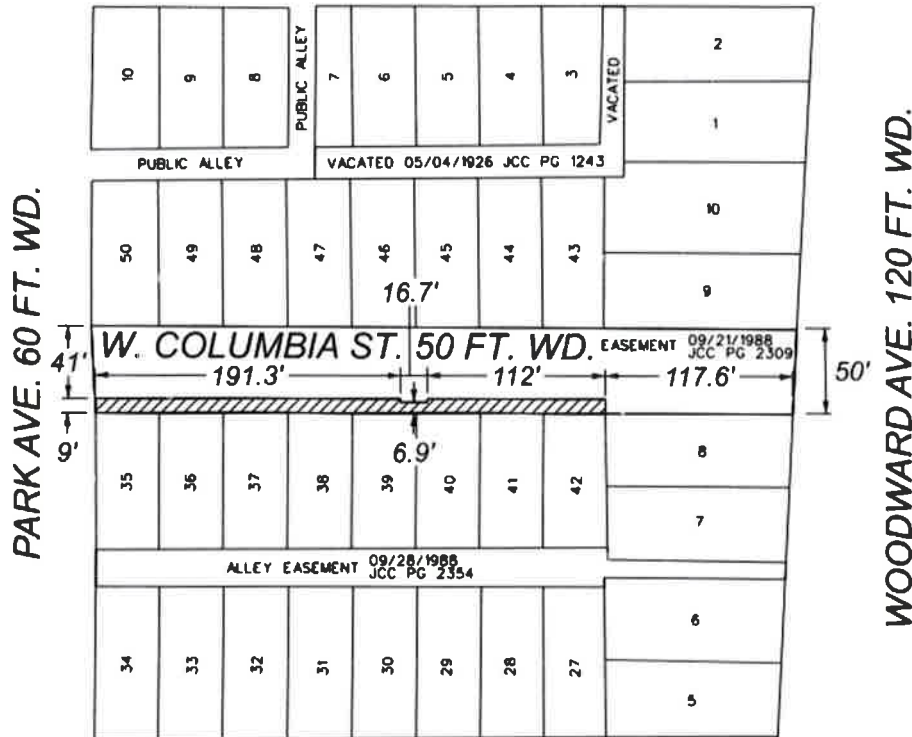
CITY OF DETROIT
DEPARTMENT OF PUBLIC WORKS
CITY ENGINEERING DIVISION

COLEMAN A. YOUNG MUNICIPAL CENTER
2 WOODWARD AVE. SUITE 601
DETROIT, MICHIGAN 48226
PHONE: (313) 224-3949 TTY: 711
WWW.DETROITMI.GOV

MAP-24-162



W. MONTCALM ST. 50 FT. WD.



W. ELIZABETH ST. 60 FT. WD.



- OUTRIGHT VACATION

(FOR OFFICE USE ONLY)

CARTO 29 E

B					
A					
DESCRIPTION	DATE	CHK	APR	DATE	
BRASH OF	TS	CHUCK	AP/LC		
DATE	06-23-2025	APPROVED	GE		

REQUEST TO VACATE
A PORTION OF W. COLUMBIA ST.
IN THE BLOCK BOUNDED BY
W. ELIZABETH ST., W. MONTCALM ST.,
PARK AVE., AND WOODWARD AVE.

CITY OF DETROIT CITY ENGINEERING DIVISION SURVEY BUREAU	
JOB NO.	24-162
DRWG. NO.	