

Janice M. Winfrey  
City Clerk

**City of Detroit**  
OFFICE OF THE CITY CLERK

Andre P. Gilbert II  
Deputy City Clerk

**DEPARTMENT PETITION REFERENCE COMMUNICATION**

*To: The Department or Commission Listed Below*

*From: Janice M Winfrey, Detroit City Clerk*

---

The following petition is herewith referred to you for report and recommendation to the City Council.

In accordance with that body's directive, kindly return the same with your report in duplicate within four (4) weeks.

---

Petition No.	2025-176
Name of Petitioner	General Services Department
Description of Petition	Petition for encroachment into the Garland St. right-of-way for an above grade sign with a below-grade concrete slab and a below-grade monolithic curb. This comes as part for approval of a park sign and curb located in the corner of Charlevoix St. and Garland St. on the east side of Detroit. This work is associated with the adjacent Dr. Ossian Sweet House and Dr. Ossian Sweet Memorial Plaza; the construction is led by the General Services Department Parks Division.
Type of Petition	<b>Alley Vacation/Encroachment/Utility Vacation</b>
Submission Date	07/07/25
Concerned Departments	Buildings, Safety Engineering, and Environmental Department (BSEED), Detroit Department of Transportation (DDOT), Detroit Fire Department (DFD), Detroit Health Department (DHD), General Services Department (GSD), Media Services Department, Municipal Parking Department, Police Department (DPD)
Petitioner Contact	Jeff Klein P1: (313) 400-5014 P2: (248) 571-8033 <a href="mailto:kleinj@detroitmi.gov">kleinj@detroitmi.gov</a> <a href="mailto:ebunkek@peagroup.com">ebunkek@peagroup.com</a>

2 Woodward Ave. Coleman A. Young Municipal Center Rm. 200, Detroit, MI 48225

(313) 224 - 3260 | Fax: (313) 224 - 1466



**CITY OF DETROIT  
DEPARTMENT OF PUBLIC WORKS  
CITY ENGINEERING DIVISION**

**COLEMAN A. YOUNG MUNICIPAL CENTER  
2 WOODWARD AVE. SUITE 601  
DETROIT, MICHIGAN 48226  
PHONE: (313) 224-3949 TTY: 711  
WWW.DETROITMI.GOV**

---

To: Clerk's Office  
From: The Department of Public Works  
City Engineering Division  
MapsandRecordsBureau@DetroitMI.Gov  
(313) 224-3970

Petitioner:  
General Services Department  
115 Eliot St.  
Detroit, MI, 48201

On behalf of the above-mentioned petitioner the Department of Public Works: City Engineering Division is submitting a petition request for the action below. The petitioner has received a project consultation from the Department of Public Works: City Engineering Division and has been advised the following:

Type of action recommended:

Petition for encroachment into the Garland St. right-of-way for an above grade sign with a below-grade concrete slab and a below-grade monolithic curb. This comes as part for approval of a park sign and curb located in the corner of Charlevoix St. and Garland St. on the east side of Detroit. This work is associated with the adjacent Dr. Ossian Sweet House and Dr. Ossian Sweet Memorial Plaza; the construction is led by the General Services Department Parks Division.

Raven Wright  
Supervisor of Maps & Records  
Department of Public Works  
City Engineering Division  
313-224-3985



**CITY OF DETROIT  
DEPARTMENT OF PUBLIC WORKS  
CITY ENGINEERING DIVISION**

**COLEMAN A. YOUNG MUNICIPAL CENTER  
2 WOODWARD AVE. SUITE 601  
DETROIT, MICHIGAN 48226  
PHONE: (313) 224-3949 TTY: 711  
[WWW.DETROITMI.GOV](http://WWW.DETROITMI.GOV)**

---



CITY OF DETROIT  
DEPARTMENT OF PUBLIC WORKS  
CITY ENGINEERING DIVISION

COLEMAN A. YOUNG MUNICIPAL CENTER  
2 WOODWARD AVE. SUITE 601  
DETROIT, MICHIGAN 48226  
PHONE: (313) 224-3949 TTY: 711  
WWW.DETROITMI.GOV

## PEA GROUP



844.813.2949  
PEAGROUP.COM

June 6, 2025

### RE: ENCROACHMENT APPROVAL FOR DR. OSSIAN SWEET PROJECT SIGN AND CURB

This letter is being submitted along with the formal request for approval of park sign and curb located in the ROW at the corner of Charlevoix and Garland St. on Detroit's east side. This work is associated with the adjacent Dr. Ossian Sweet House and Dr. Ossian Sweet Memorial Plaza construction led by GSD parks division.

The project is currently under construction.

The property will be maintained by the General Services.

Thank you for your consideration and If you have any questions or concerns about the project, please contact Jeff Klein at 313.400.5014 or [kleinj@detroitmi.gov](mailto:kleinj@detroitmi.gov). You can also contact me at 248-571-8033 or [ebunek@peagroup.com](mailto:ebunek@peagroup.com).

Sincerely,

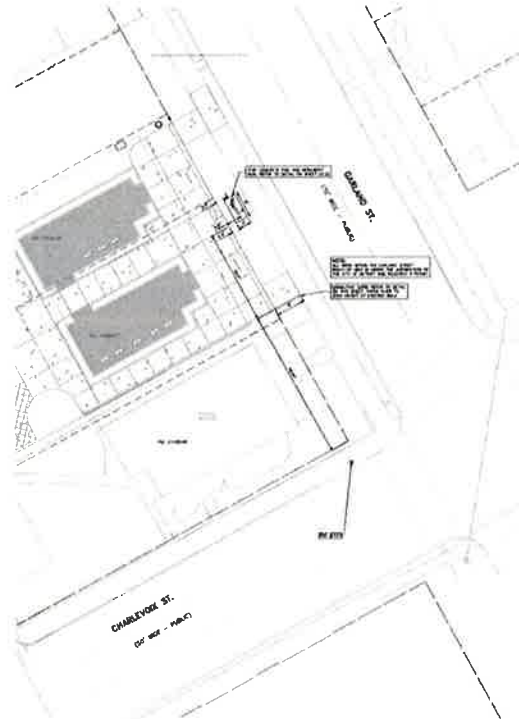
**PEA Group**

Emil S. Bunek III, PE  
Detroit Engineering Department Manager



CITY OF DETROIT  
DEPARTMENT OF PUBLIC WORKS  
CITY ENGINEERING DIVISION

COLEMAN A. YOUNG MUNICIPAL CENTER  
2 WOODWARD AVE. SUITE 601  
DETROIT, MICHIGAN 48226  
PHONE: (313) 224-3949 TTY: 711  
WWW.DETROITMI.GOV

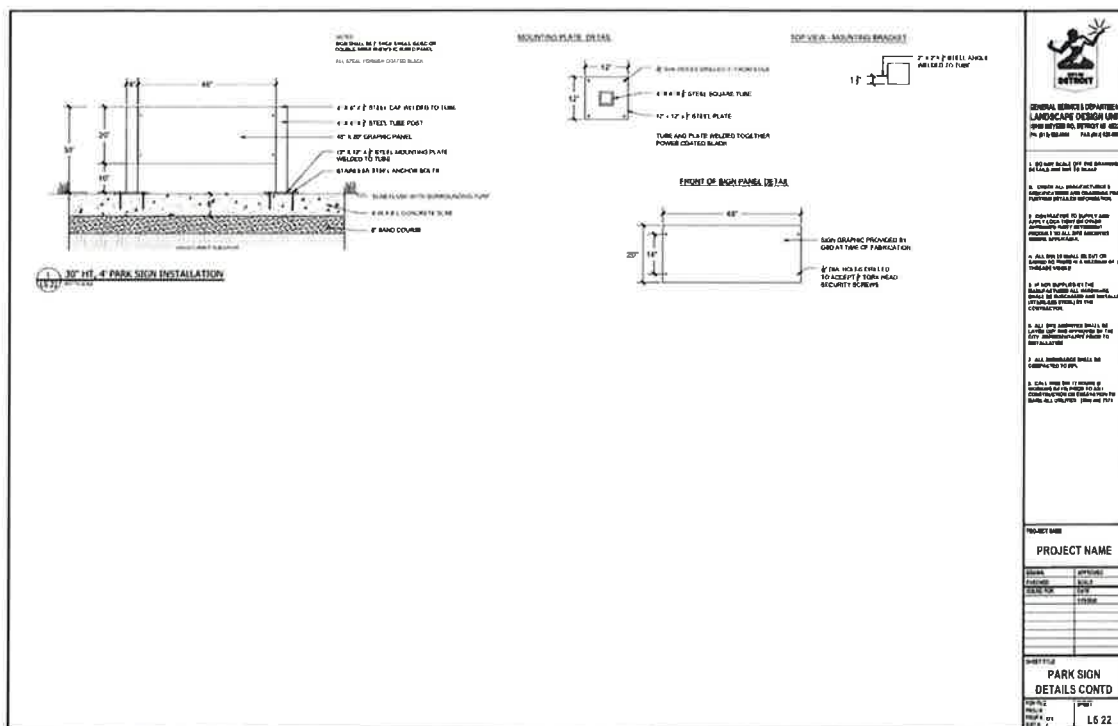


CONTRACTOR  
WILLIAMSON  
DETROIT

PROJECT NO.  
1400 1/2 ST. (1400 1/2 ST. - PUBLIC)  
DETROIT

ENCROACHMENT  
PLAN

NO. 1400 1/2 ST. (1400 1/2 ST. - PUBLIC)  
C-3.0





**CITY OF DETROIT  
DEPARTMENT OF PUBLIC WORKS  
CITY ENGINEERING DIVISION**

**COLEMAN A. YOUNG MUNICIPAL CENTER  
2 WOODWARD AVE. SUITE 601  
DETROIT, MICHIGAN 48226  
PHONE: (313) 224-3949 TTY: 711  
[WWW.DETROITMI.GOV](http://WWW.DETROITMI.GOV)**

---



CITY OF DETROIT  
DEPARTMENT OF PUBLIC WORKS  
CITY ENGINEERING DIVISION

COLEMAN A. YOUNG MUNICIPAL CENTER  
2 WOODWARD AVE. SUITE 601  
DETROIT, MICHIGAN 48226  
PHONE: (313) 224-3949 TTY: 711  
WWW.DETROITMI.GOV

MAP-25-58

GOETHE ST. 50 FT. WD.

BEWICK ST. 70 FT. WD.

GARLAND ST. 70 FT. WD.

CHARLEVOIX ST. 50 FT. WD.

379

469

468

29.5'

0.67'

46.83'

2.5'

4'

8'

4.5'

9'

16'

8'

CURB

CONCRETE SLAB, 4' x 8'  
(0' TO 0.67' BELOW GRADE  
WITH 0.5' SAND COURSE)

MONUMENT SIGN, 4.67' x 2.5'  
(0' TO 2.5' ABOVE GRADE)

MONOLITHIC CURB 0.67' x 9'  
(1.5' BELOW GRADE TO 0.75'  
TAPERED TO 0' HEIGHT AT  
EXISTING WALK)

GOETHE ST. 50 FT. WD.

BEWICK ST. 70 FT. WD.

GARLAND ST. 70 FT. WD.

CHARLEVOIX ST. 50 FT. WD.

250

252

254

256

258

260

262

264

266

458

459

395

393

391

389

387

385

383

381

379

469

468

- REQUEST ENCROACHMENT  
(For Monolithic Curb)

- REQUEST ENCROACHMENT  
(For Monument Sign)

- REQUEST ENCROACHMENT  
(For Concrete Slab)

(FOR OFFICE USE ONLY)

CARTO 55 C

B		A	
DESCRIPTION	REVISIONS	DATE	DATE
DRAWN BY	LC	CHECKED	AP/TS
DATE	7-02-2025	APPROVED	GE

REQUEST ENCROACHMENT  
INTO GARLAND ST.  
BETWEEN CHARLEVOIX ST.  
AND GOETHE ST.

CITY OF DETROIT  
CITY ENGINEERING DIVISION  
SURVEY BUREAU

JOB NO. 25-58

DRAWG. NO.





**CITY OF DETROIT**  
**DEPARTMENT OF PUBLIC WORKS**  
**CITY ENGINEERING DIVISION**

**COLEMAN A. YOUNG MUNICIPAL CENTER**  
**2 WOODWARD AVE. SUITE 601**  
**DETROIT, MICHIGAN 48226**  
**PHONE: (313) 224-3949 TTY: 711**  
**[WWW.DETROITMI.GOV](http://WWW.DETROITMI.GOV)**

---