



CITY OF DETROIT
DEPARTMENT OF PUBLIC WORKS
CITY ENGINEERING DIVISION

COLEMAN A. YOUNG MUNICIPAL CENTER
2 WOODWARD AVE. SUITE 601
DETROIT, MICHIGAN 48226
PHONE: (313) 224-3949 TTY: 711
WWW.DETROITMI.GOV

To: Clerk's Office
From: The Department of Public Works
City Engineering Division
MapsandRecordsBureau@DetroitMI.Gov
(313) 224-3970

Petitioner:
General Services Department
115 Eliot St.
Detroit, MI, 48201

On behalf of the above-mentioned petitioner the Department of Public Works: City Engineering Division is submitting a petition request for the action below. The petitioner has received a project consultation from the Department of Public Works: City Engineering Division and has been advised the following:

Type of action recommended:

Petition for encroachment into the Garland St. right-of-way for an above grade sign with a below-grade concrete slab and a below-grade monolithic curb. This comes as part for approval of a park sign and curb located in the corner of Charlevoix St. and Garland St. on the east side of Detroit. This work is associated with the adjacent Dr. Ossian Sweet House and Dr. Ossian Sweet Memorial Plaza; the construction is led by the General Services Department Parks Division.

Raven Wright
Supervisor of Maps & Records
Department of Public Works
City Engineering Division
313-224-3985



CITY OF DETROIT
DEPARTMENT OF PUBLIC WORKS
CITY ENGINEERING DIVISION

COLEMAN A. YOUNG MUNICIPAL CENTER
2 WOODWARD AVE. SUITE 601
DETROIT, MICHIGAN 48226
PHONE: (313) 224-3949 TTY: 711
WWW.DETROITMI.GOV



CITY OF DETROIT
DEPARTMENT OF PUBLIC WORKS
CITY ENGINEERING DIVISION

COLEMAN A. YOUNG MUNICIPAL CENTER
2 WOODWARD AVE. SUITE 601
DETROIT, MICHIGAN 48226
PHONE: (313) 224-3949 TTY: 711
WWW.DETROITMI.GOV

PEA GROUP



844.813.2949
PEAGROUP.COM

June 6, 2025

RE: ENCROACHMENT APPROVAL FOR DR. OSSIAN SWEET PROJECT SIGN AND CURB

This letter is being submitted along with the formal request for approval of park sign and curb located in the ROW at the corner of Charlevoix and Garland St. on Detroit's east side. This work is associated with the adjacent Dr. Ossian Sweet House and Dr. Ossian Sweet Memorial Plaza construction led by GSD parks division.

The project is currently under construction.

The property will be maintained by the General Services.

Thank you for your consideration and If you have any questions or concerns about the project, please contact Jeff Klein at 313.400.5014 or kleinj@detroitmi.gov. You can also contact me at 248-571-8033 or ebunek@peagroup.com.

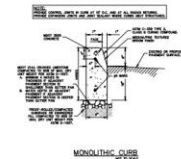
Sincerely,

PEA Group

Emil S. Bunek III, PE
Detroit Engineering Department Manager



COLEMAN A. YOUNG MUNICIPAL CENTER
2 WOODWARD AVE. SUITE 601
DETROIT, MICHIGAN 48226
PHONE: (313) 224-3949 TTY: 711
WWW.DETROITMI.GOV



LEGEND

	CONCRETE IN PLAN VIEW
	ASPHALT IN PLAN VIEW
	GRAVEL
	WETLAND
	CONCRETE CURB AND GUT
	REFERENCE CUT-OFF LINE
	DETECTION LINE
	HIGH LIGHTED AREA
	DRAINAGE

GENERAL NOTES:

1. THESE NOTES APPLY TO ALL CONSTRUCTION ACTIVITIES ON THIS PROJECT.
2. PRIOR TO CONSTRUCTION, THE DESIGN OF THE PROJECT, INCLUDING THE LOCATION OF THE CONCRETE CURB AND GUT, THE LOCATION OF THE DETECTION LINE, THE LOCATION OF THE REFERENCE CUT-OFF LINE, AND THE LOCATION OF THE DRAINAGE, SHALL BE REVIEWED BY THE DESIGNER.
3. REFER TO SHEET 6-01 DETAIL SHEET FOR CURB AND GUT.
4. REFER TO SHEET 6-01 DETAIL SHEET FOR DETECTION LINE.
5. REFER TO SHEET 6-01 DETAIL SHEET FOR DRAINAGE.

Notes & Revision Table

NO.	REVISION	DATE
1	ADDED DETECTION LINE	10/1/2010
2	ADDED DETECTION LINE	10/1/2010
3	ADDED DETECTION LINE	10/1/2010
4	ADDED DETECTION LINE	10/1/2010
5	ADDED DETECTION LINE	10/1/2010
6	ADDED DETECTION LINE	10/1/2010
7	ADDED DETECTION LINE	10/1/2010
8	ADDED DETECTION LINE	10/1/2010
9	ADDED DETECTION LINE	10/1/2010
10	ADDED DETECTION LINE	10/1/2010



CLIENT
WCI CONTRACTORS, INC.
2010 CHANDLER STREET
DETROIT, MI

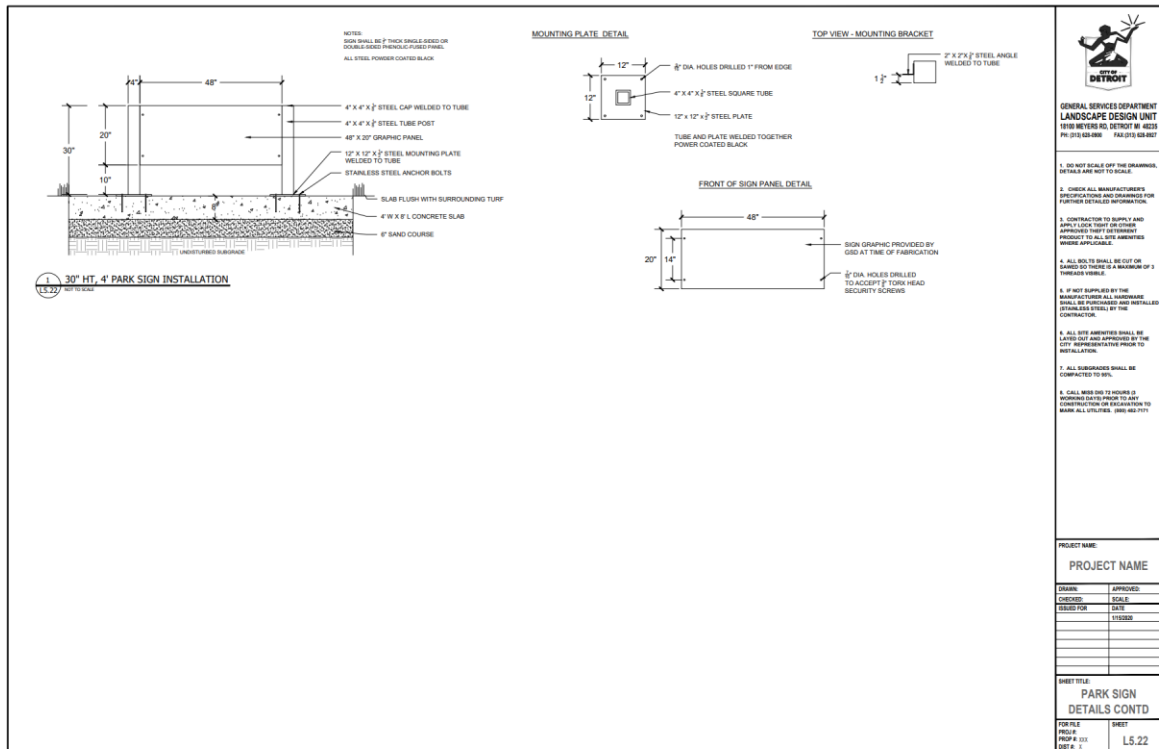
PROJECT TITLE
OSSIAN SWEET DETROIT
2010 CHANDLER STREET
DETROIT, MI

REVISIONS	
ORIGINAL ISSUE DATE:	JUNE 4, 2023
DRAWING TITLE	ENCROACHMENT PLAN
PEA JOB NO.	24-1323
P.M.	EJ
CN.	CR
DES.	BW
DRAWING NUMBER	C-3.0

C-3.0



COLEMAN A. YOUNG MUNICIPAL CENTER
2 WOODWARD AVE. SUITE 601
DETROIT, MICHIGAN 48226
PHONE: (313) 224-3949 TTY: 711
WWW.DETROITMI.GOV





CITY OF DETROIT
DEPARTMENT OF PUBLIC WORKS
CITY ENGINEERING DIVISION

COLEMAN A. YOUNG MUNICIPAL CENTER
2 WOODWARD AVE. SUITE 601
DETROIT, MICHIGAN 48226
PHONE: (313) 224-3949 TTY: 711
WWW.DETROITMI.GOV



CITY OF DETROIT
DEPARTMENT OF PUBLIC WORKS
CITY ENGINEERING DIVISION

COLEMAN A. YOUNG MUNICIPAL CENTER
2 WOODWARD AVE. SUITE 601
DETROIT, MICHIGAN 48226
PHONE: (313) 224-3949 TTY: 711
WWW.DETROITMI.GOV

MAP-25-58

GOETHE ST. 50 FT. WD.

BEWICK ST. 70 FT. WD.

GARLAND ST. 70 FT. WD.

CHARLEVOIX ST. 50 FT. WD.

379

469

468

29.5'

0.67'

46.83'

8'

16'

2.5'

4'

8'

4.5'

9'

CURB

CURB

CONCRETE SLAB, 4' X 8'
(0' TO 0.67' BELOW GRADE
WITH 0.5' SAND COURSE)

MONUMENT SIGN, 4.67' X 2.5'
(0' TO 2.5' ABOVE GRADE)

MONOLITHIC CURB 0.67' X 9'
(1.5' BELOW GRADE TO 0.75'
TAPERED TO 0' HEIGHT AT
EXISTING WALK)

GOETHE ST. 50 FT. WD.

BEWICK ST. 70 FT. WD.

GARLAND ST. 70 FT. WD.

CHARLEVOIX ST. 50 FT. WD.

250

252

254

256

258

260

262

264

266

458

459

395

393

391

389

387

385

383

381

379

469

468

LEGEND

- REQUEST ENCROACHMENT
(For Monolithic Curb)
- REQUEST ENCROACHMENT
(For Monument Sign)
- REQUEST ENCROACHMENT
(For Concrete Slab)

(FOR OFFICE USE ONLY)

CARTO 55 C

B	A	DESCRIPTION	REVISIONS	DEWN	CHKD	APPD	DATE
		DRAWN BY	LC	CHECKED	AP/TS		
		DATE	7-02-2025	APPROVED	GE		

REQUEST ENCROACHMENT
INTO GARLAND ST.
BETWEEN CHARLEVOIX ST.
AND GOETHE ST.

CITY OF DETROIT
CITY ENGINEERING DIVISION
SURVEY BUREAU

JOB NO. 25-58

DRWG. NO.



CITY OF DETROIT
DEPARTMENT OF PUBLIC WORKS
CITY ENGINEERING DIVISION

COLEMAN A. YOUNG MUNICIPAL CENTER
2 WOODWARD AVE. SUITE 601
DETROIT, MICHIGAN 48226
PHONE: (313) 224-3949 TTY: 711
WWW.DETROITMI.GOV
