



Central Services Facility

313-267-8000 • detroitmi.gov/DWSD

Date:

Petition Map:

- ☐ Outright Vacation
- ☐ Conversion to Easement

- ☐ Dedication
- ☐ Encroachment

☐ Berm Use

☐ Temporary Closing

The above petition has been received and reviewed by this office. Please see below for the review status as marked.

☐ Approved Subject to Attached Provisions

☐ Not Approved

☐ Revise and Resubmit

Attached is the DWSD provision related to the petition.

	Name	Title	Signature	Date
Reviewed by:			<i>Mohammad Siddique</i>	
Approved by:			<i>Mohammad Siddique</i> For Syed Ali	

PROVISIONS FOR ENCROACHMENT

1. By approval of this petition the Detroit Water and Sewerage Department (DWSD) does not waive any of its rights to its facilities located in the right of way, and at all time, DWSD, its agents or employees, shall have the right to enter upon the right of way to maintain, repair, alter, service, inspect, or install its facilities. All costs incident to the damaging, dismantling, demolishing, removal and replacement of structures or other improvements herein permitted and incurred in gaining access to DWSD's facilities for maintenance, repairing, alteration, servicing, or inspection by DWSD shall be borne by the petitioner. All costs associated with gaining access to DWSD's facilities, which could normally be expected had the petitioner not encroached into the right of way shall be borne by DWSD.
2. All construction performed under this petition shall not be commenced until after five (5) days written notice to DWSD. Seventy-two (72) hour notice shall also be provided in accordance with P.A. 53 1974, as amended, utilizing the MISS DIG one call system.
3. Construction under this petition is subject to inspection and approval by DWSD. The cost of such inspection shall, at the discretion of DWSD, be borne by the petitioner.
4. DWSD prohibits the use of heavy construction equipment or the storage of building material directly over or near DWSD facilities. DWSD also prohibits the use of cranes and balls or hydraulic rams for pavement removal where DWSD facilities are involved. If the water main or sewer facilities are broken or damaged as a result of any action on the part of the contractor, the contractor shall be liable for all costs incidental to the repair of such broken or damaged water main or sewer facilities. If DWSD facilities located within the street shall break or be damaged as the result of any action on the part of the petitioner, then in such event the petitioner agrees to be liable for all costs incident to the repair, replacement or relocation of such broken or damaged DWSD facilities.
5. The petitioner shall hold DWSD harmless for any damage to the encroaching device constructed or installed under this petition, which may be caused by the failure of DWSD's facilities.
6. If at any time in the future the petitioner shall request removal and / or relocation of DWSD's facilities in the street being encroached upon, the petitioner agrees to pay all costs for such removal and/or relocation.
7. Prior to construction, Easement Encroachment Permit (EEP) should be obtained and the insurance required by the EEP should not expire until after completion of the construction.
8. For any proposed work that involves DWSD water mains and/or sewers, an approval and a permit is required from DWSD before commencement of work.
9. It is DWSD's requirement that any proposed utility crossing DWSD water mains and/or sewers perpendicularly must maintain a minimum of 18 inches vertical clearance. Any proposed utility running adjacent to DWSD water mains and/or sewers must maintain a minimum of 10 feet lateral clearance including any conduit and/or manholes walls. No utility is allowed to run along the top of the water main or/or sewer.
10. It is DWSD's requirement that no encroachment has a vertical clearance of less than 16 feet from the ground surface over DWSD water mains and/or sewers.



844.813.2949
PEAGROUP.COM

June 6, 2025

RE: ENCROACHMENT APPROVAL FOR DR. OSSIAN SWEET PROJECT SIGN AND CURB

This letter is being submitted along with the formal request for approval of park sign and curb located in the ROW at the corner of Charlevoix and Garland St. on Detroit's east side. This work is associated with the adjacent Dr. Ossian Sweet House and Dr. Ossian Sweet Memorial Plaza construction led by GSD parks division.

The project is currently under construction.

The property will be maintained by the General Services.

Thank you for your consideration and If you have any questions or concerns about the project, please contact Jeff Klein at 313.400.5014 or kleinj@detroitmi.gov. You can also contact me at 248-571-8033 or ebunek@peagroup.com.

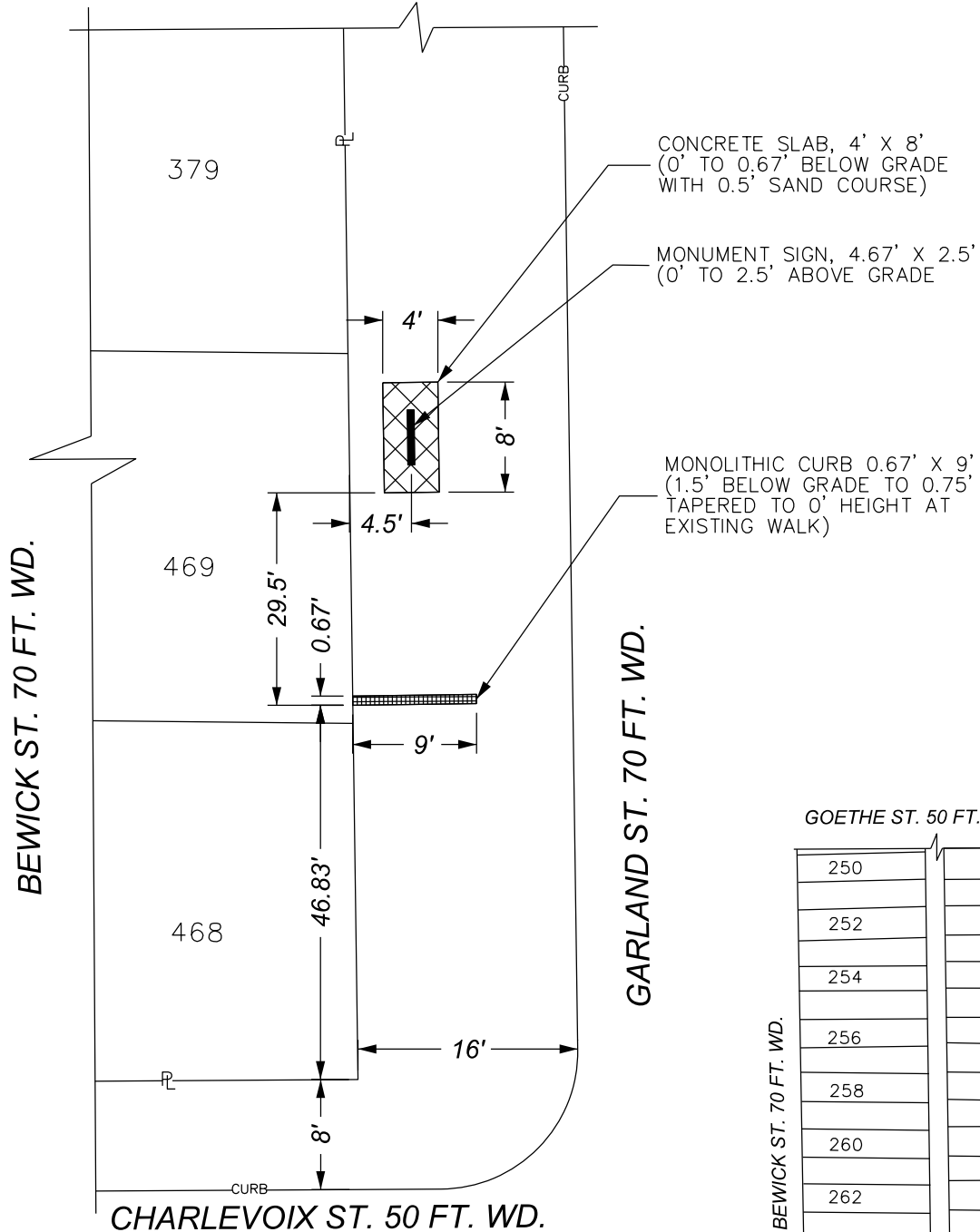
Sincerely,

PEA Group

Emil S. Bunek III, PE
Detroit Engineering Department Manager

MAP-25-58

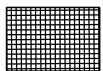
GOETHE ST. 50 FT. WD.



GOETHE ST. 50 FT. WD.	
250	395
252	393
254	391
256	389
258	387
260	385
262	383
264	381
266	379
458	469
459	468
CHARLEVOIX ST. 50 FT. WD.	

BEWICK ST. 70 FT. WD.

GARLAND ST. 70 FT. WD.



- REQUEST ENCROACHMENT
(For Monolithic Curb)



- REQUEST ENCROACHMENT
(For Monument Sign)



- REQUEST ENCROACHMENT
(For Concrete Slab)

(FOR OFFICE USE ONLY)

CARTO 55 C

B					
A					
DESCRIPTION		DRWN	CHKD	APPD	DATE
REVISIONS					
DRAWN BY	LC	CHECKED		AP/TS	
DATE	6-11-2025	APPROVED		GE	

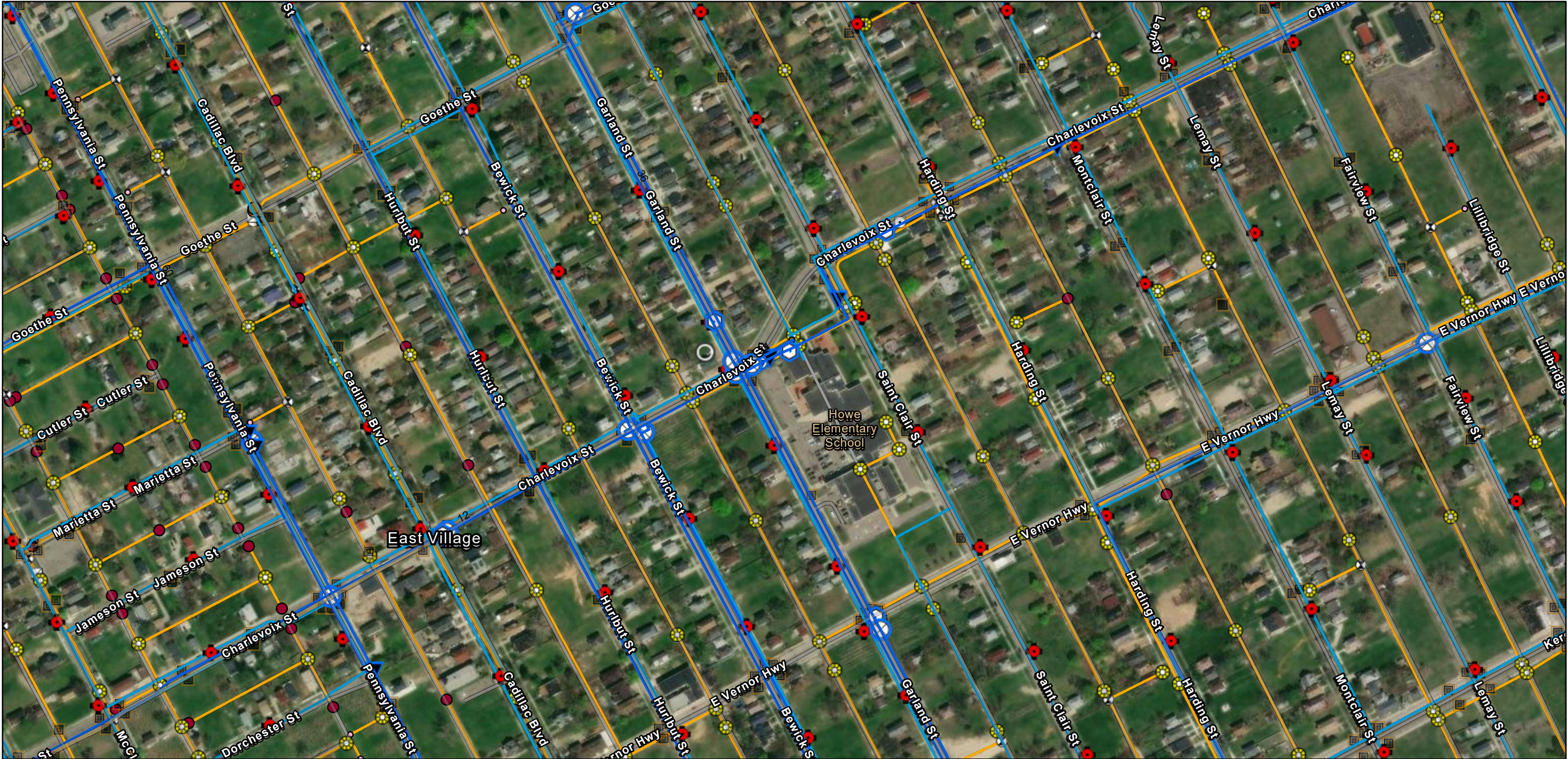
REQUEST ENCROACHMENT
INTO GARLAND ST.
BETWEEN CHARLEVOIX ST.
AND GOETHE ST.

CITY OF DETROIT
CITY ENGINEERING DIVISION
SURVEY BUREAU

JOB NO. 25-58

DRWG. NO.

2015 Garland St



6/16/2025

Transmission System Mains - GLWA

Active Water Main

Transmission System Valves - GLWA



Blowoff



Cone



Gate



Manual Air



Tapping Sleeve



Distribution System Hydrant

Distribution System Main



Active



Wastewater Catch Basin



Wastewater Manhole



Wastewater Chamber

Wastewater Fitting



Bend/Slope Change



Blind Connection



Material/Size Change



Crown/Main Point



Wastewater Lamp Hole

Wastewater GravityMain



Active



Abandoned/Inactive/Retired



Wastewater Regulator

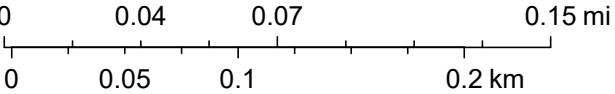
World Imagery

Low Resolution 15m Imagery

High Resolution 60cm Imagery

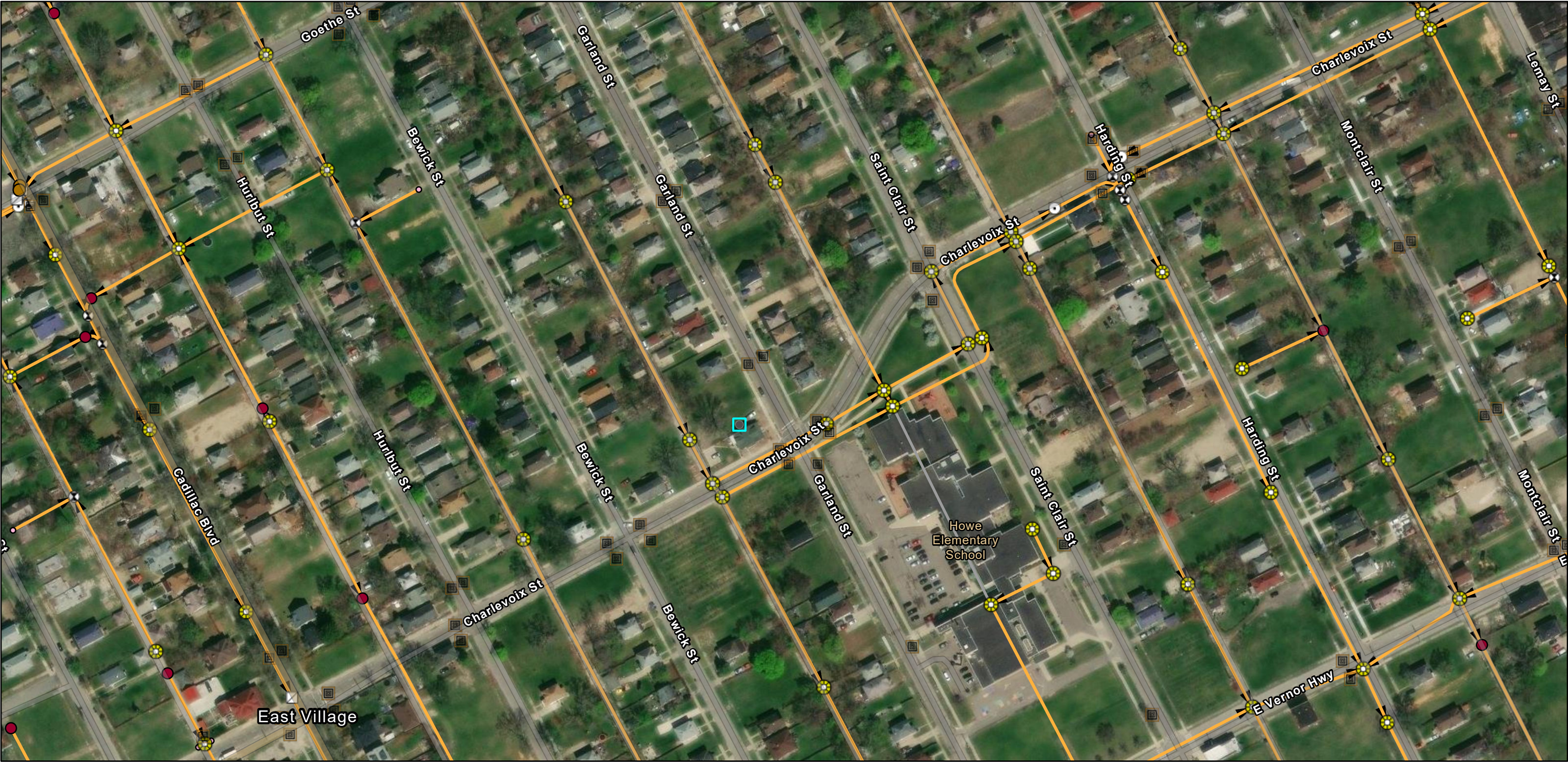
High Resolution 30cm Imagery

Citations



DWSD, Sources: Esri, TomTom, Garmin, FAO, NOAA, USGS, © OpenStreetMap contributors, and the GIS User Community, Maxar

2915 Garland St



6/16/2025, 2:44:53 PM

- Wastewater Catch Basin (DWSD)

Wastewater Chamber (DWSD)

Wastewater Lamp Hole (DWSD)

Wastewater Manhole (DWSD)
- Wastewater Fitting (DWSD)

Bend/Slope Change

Blind Connection

Material/Size Change

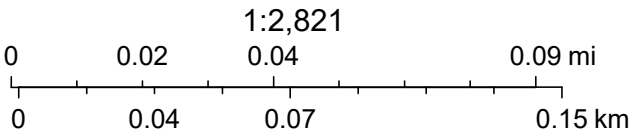
Crown/Main Point
- Wastewater Regulator (DWSD)

Wastewater Gravity Main (DWSD)

Active

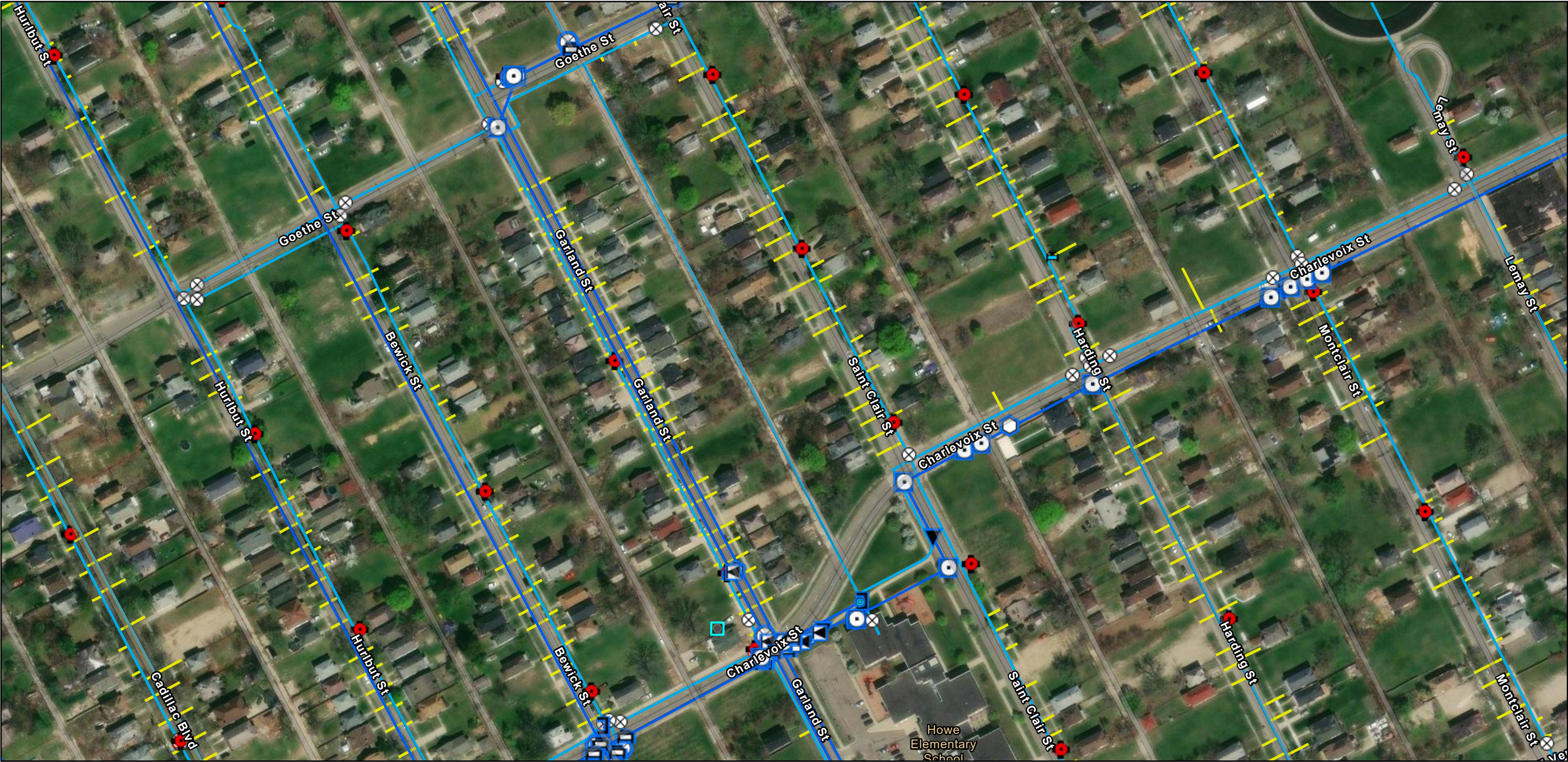
Abandoned/Inactive/Retired

DWSD Wastewater Flow Direction



Sources: Esri, TomTom, Garmin, FAO, NOAA, USGS, © OpenStreetMap contributors, and the GIS User Community, Maxar

2915 Garland St



6/16/2025, 2:44:46 PM

Transmission System Fittings (GLWA)



Cap



Horizontal Bend



Reducer



Sleeve



Tap



Tee

Transmission System Valves (GLWA)



Blowoff



Cone



Gate



Manual Air



Tapping Sleeve

Transmission System Mains (GLWA)



Active Water Main

Distribution System Hydrant



DWSD

Distribution System Valve



Gate



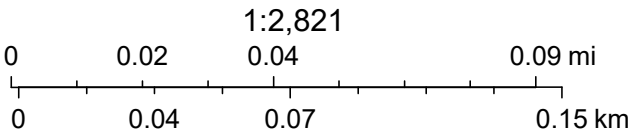
TSV

Hydrant

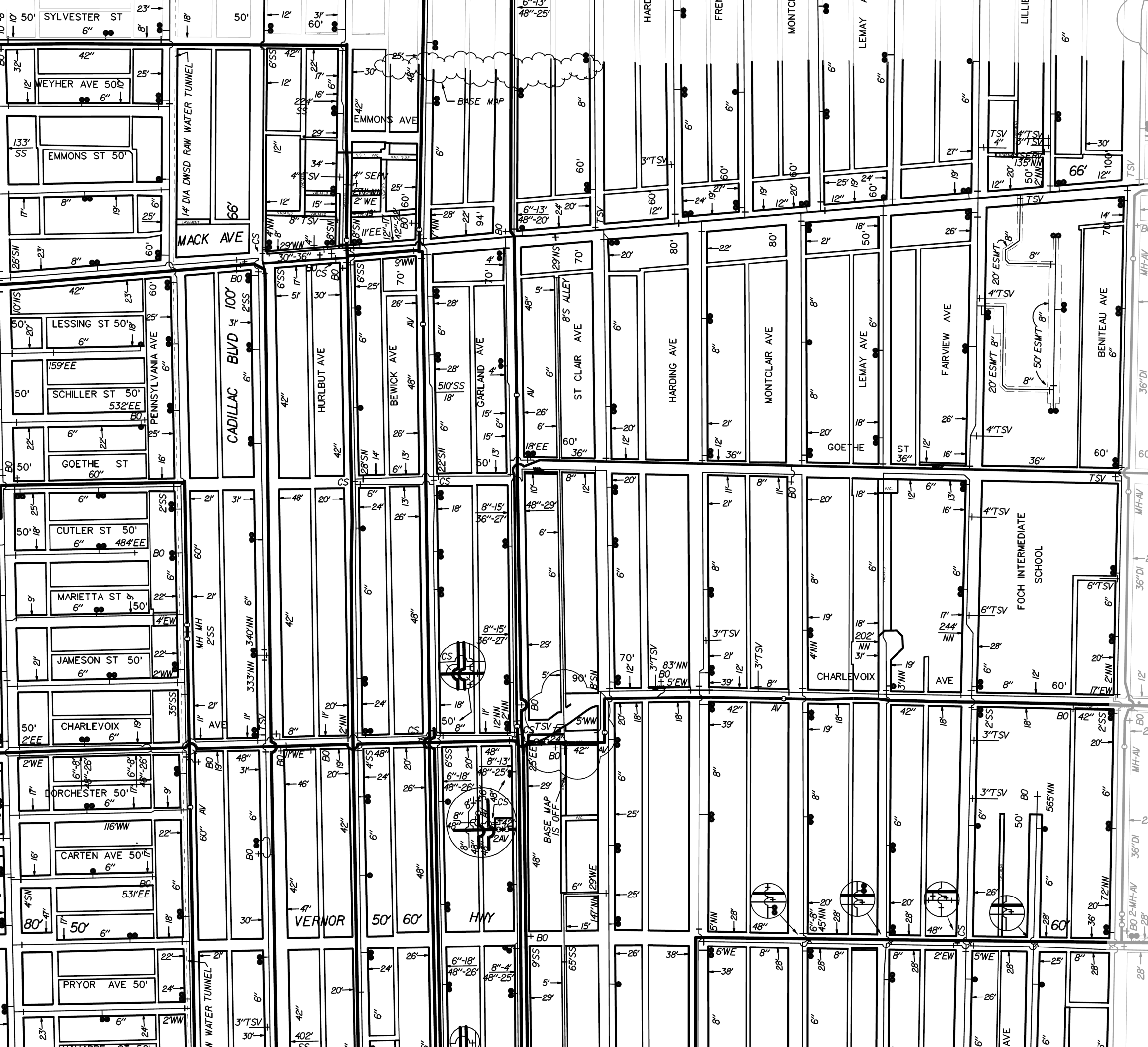
Distribution System Main

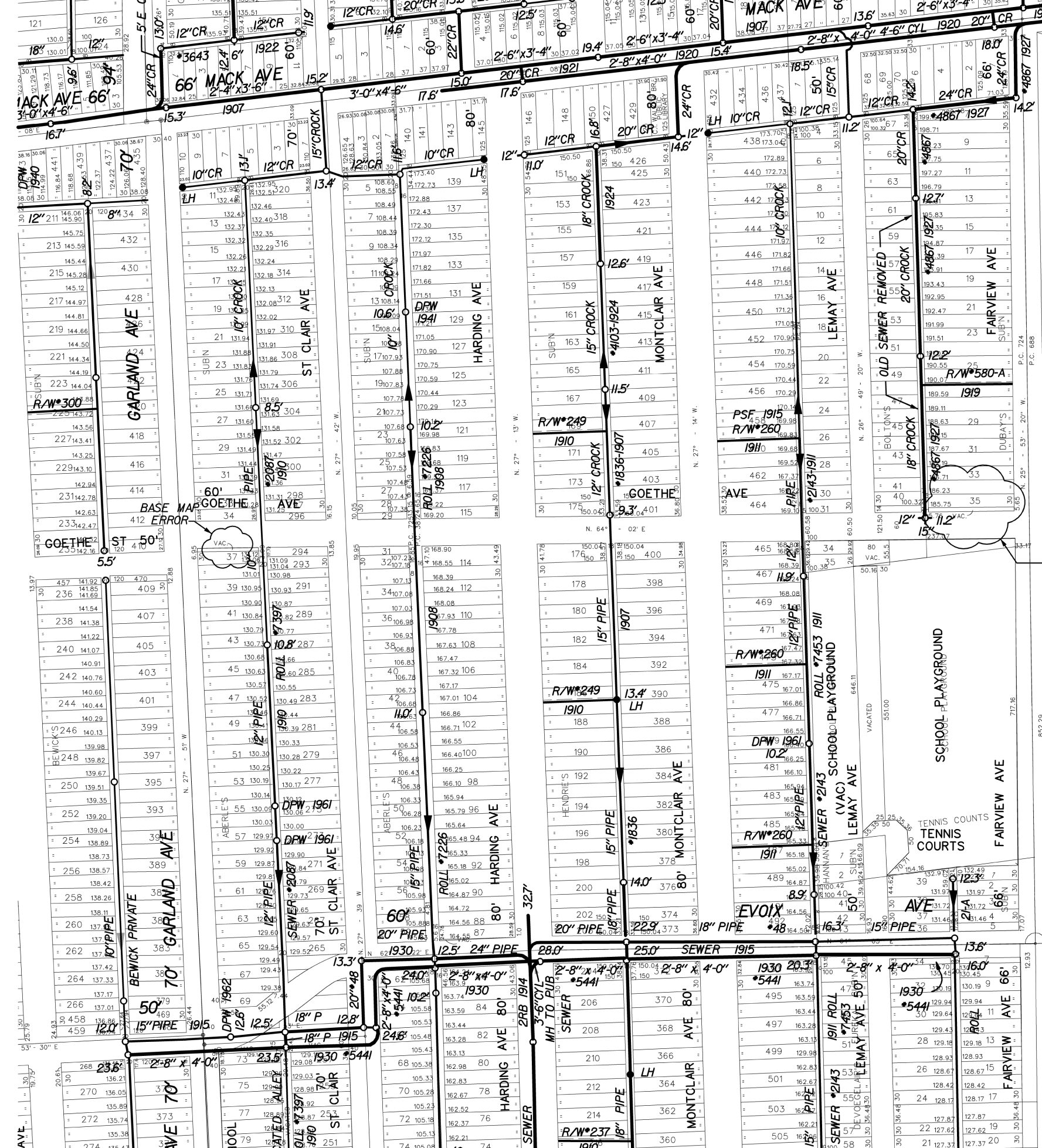
Active

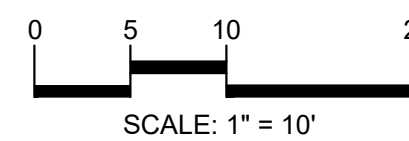
Distribution System Service Line



Sources: Esri, TomTom, Garmin, FAO, NOAA, USGS, © OpenStreetMap contributors, and the GIS User Community, Maxar







CAUTION!!
THE LOCATIONS AND ELEVATIONS OF EXISTING UNDERGROUND UTILITIES AS SHOWN ON THIS DRAWING ARE ONLY APPROXIMATE. NO GUARANTEE IS EITHER EXPRESSED OR IMPLIED AS TO THE COMPLETENESS OR ACCURACY THEREOF. THE CONTRACTOR SHALL BE EXCLUSIVELY RESPONSIBLE FOR DETERMINING THE EXACT UTILITY LOCATIONS AND ELEVATIONS PRIOR TO THE START OF CONSTRUCTION.

CLIENT
**WCI
CONTRACTORS,
INC.**
20210 CONNER STREET
DETROIT, MI

PROJECT TITLE
OSSIAN SWEET
DETROIT
2905 GARLAND STREET
DETROIT, MI

REVISIONS

ORIGINAL ISSUE DATE:
JUNE 4, 2025

DRAWING TITLE
**ENCROACHMENT
PLAN**

PFA JOB NO 24-1323

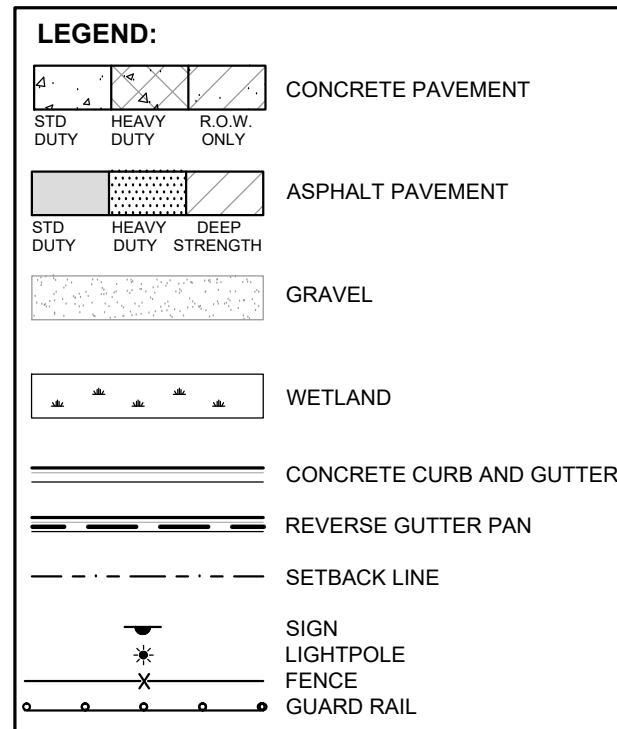
P.M. EB

DN.	CR
-----	----

DES.	RW
------	----

DRAWING NUMBER

C-3.0



GENERAL NOTES:

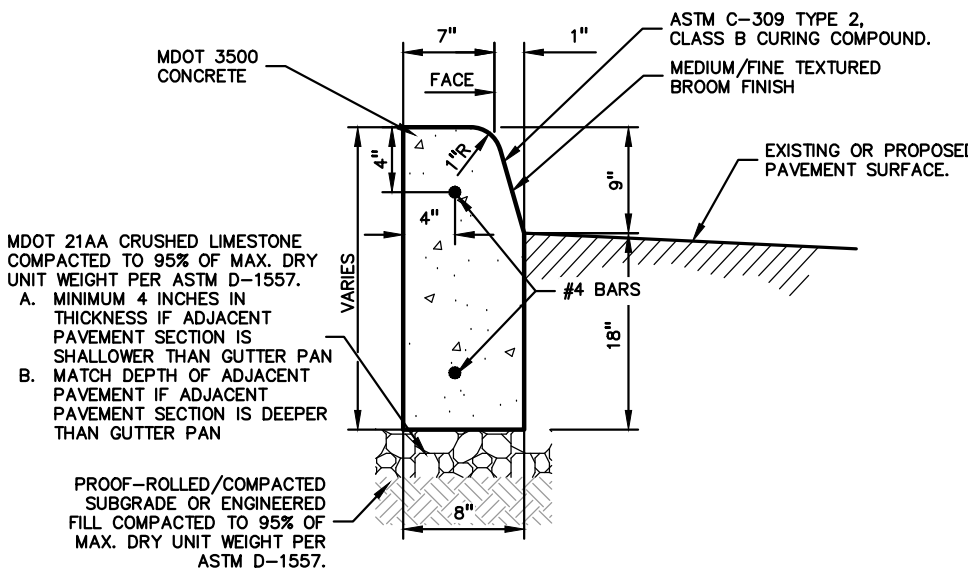
THESE NOTES APPLY TO ALL CONSTRUCTION
ACTIVITIES ON THIS PROJECT.

1. ALL DIMENSIONS SHOWN ARE TO BACK OF CURB FACE OF SIDEWALK, OUTSIDE FACE OF BUILDING PROPERTY LINE, CENTER OF MANHOLE/CATCH BASIN OR CENTERLINE OF PIPE UNLESS OTHERWISE NOTED.
2. REFER TO NOTES & DETAILS SHEET FOR ON-SITE PAVING DETAILS.
3. REFER TO NOTES & DETAILS SHEET FOR ON-SITE SIDEWALK RAMP DETAILS

DWSD STORMWATER NOTE

PROPOSED IMPERVIOUS AREA DOES NOT EXCEED 1/2
ACRE. STORMWATER ORDINANCE REQUIREMENTS FOR
TREATMENT INFILTRATION AND DETENTION DO NOT
APPLY TO THIS PROJECT.

NOTE:
 PROVIDE CONTROL JOINTS IN CURB AT 10' O.C. AND AT ALL RADIUS RETURNS.
 PROVIDE EXPANSION JOINTS AND JOINT SEALANT WHERE CURBS ABUT STRUCTURES.



MONOLITHIC CURB

NOT TO SCALE