

Janice M. Winfrey
City Clerk

City of Detroit
OFFICE OF THE CITY CLERK

Andre P. Gilbert II
Deputy City Clerk

DEPARTMENT PETITION REFERENCE COMMUNICATION

To: The Department or Commission Listed Below

From: Janice M Winfrey, Detroit City Clerk

The following petition is herewith referred to you for report and recommendation to the City Council.

In accordance with that body's directive, kindly return the same with your report in duplicate within four (4) weeks.

Petition No.	2025-162
Name of Petitioner	1201 Webward Avenue LLC
Description of Petition	Petition to request encroachment within the northerly part of State St., adjacent to the parcel commonly known as 1201 Woodward Ave., for the installation of a building-mounted internally illuminated blade sign.
Type of Petition	Alley Vacation/Encroachment/Utility Vacation
Submission Date	06/30/25
Concerned Departments	Media Services, Building & Safety Engineering, Police Department, Fire Department, Municipal Parking Department, Transportation Department, Health Department, General Services Department
Petitioner Contact	Kevin Deters Metro Signs & Lighting (Ph) 586-759-2700



**CITY OF DETROIT
DEPARTMENT OF PUBLIC WORKS
CITY ENGINEERING DIVISION**

**COLEMAN A. YOUNG MUNICIPAL CENTER
2 WOODWARD AVE. SUITE 601
DETROIT, MICHIGAN 48226
PHONE: (313) 224-3949 TTY: 711
WWW.DETROITMI.GOV**

To: Clerk's Office
From: The Department of Public Works
City Engineering Division
MapsandRecordsBureau@DetroitMI.Gov
(313) 224-3970

Petitioner:
1201 Woodward Avenue LLC
630 WOODWARD AVENUE
Detroit, MI, 48226

On behalf of the above-mentioned petitioner the Department of Public Works: City Engineering Division is submitting a petition request for the action below. The petitioner has received a project consultation from the Department of Public Works: City Engineering Division and has been advised the following:

Type of action recommended:

Petition for encroachment within the northerly part of State St., adjacent to the parcel commonly known as 1201 Woodward Ave., for the installation of a building-mounted internally illuminated blade sign.

Raven Wright
Supervisor of Maps & Records
Department of Public Works
City Engineering Division
313-224-3985



**CITY OF DETROIT
DEPARTMENT OF PUBLIC WORKS
CITY ENGINEERING DIVISION**

**COLEMAN A. YOUNG MUNICIPAL CENTER
2 WOODWARD AVE. SUITE 601
DETROIT, MICHIGAN 48226
PHONE: (313) 224-3949 TTY: 711
WWW.DETROITMI.GOV**



**CITY OF DETROIT
DEPARTMENT OF PUBLIC WORKS
CITY ENGINEERING DIVISION**

**COLEMAN A. YOUNG MUNICIPAL CENTER
2 WOODWARD AVE. SUITE 601
DETROIT, MICHIGAN 48226
PHONE: (313) 224-3949 TTY: 711
WWW.DETROITMI.GOV**



DATE: 5/23/25
TO: City of Detroit DPW
FROM: Kevin Deters
Metro Signs & Lighting
RE: Encroachment for projecting sign at "GW Home Detroit"
1201 Woodward
SGN2025-00091

We are applying for a permit for a projecting sign. The sign is a 1.66' x 7.25' (12 sq feet). The total projection is 26 inches from the building. The sign's underclearance is 13.5 feet.

Feel free to call me at (586)759-2700 if anything else is needed. Thank you for your assistance.

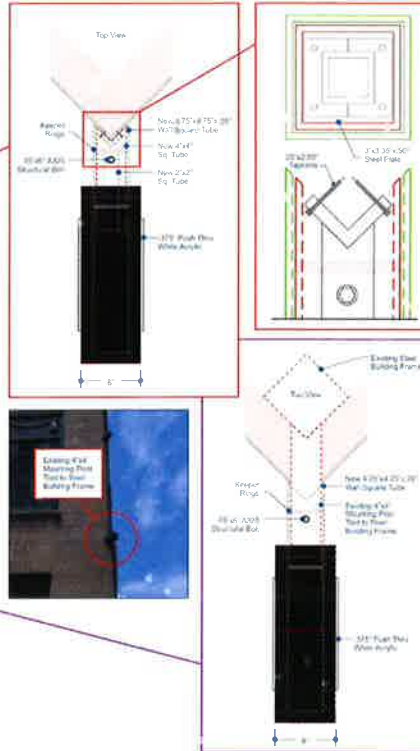
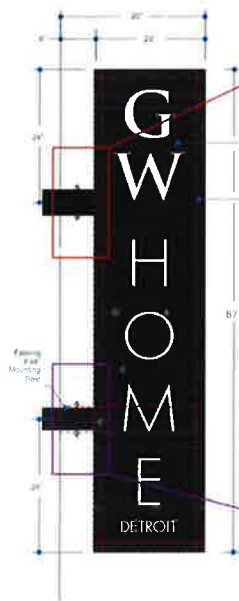
Kevin Deters 5-23-25



CITY OF DETROIT
DEPARTMENT OF PUBLIC WORKS
CITY ENGINEERING DIVISION

COLEMAN A. YOUNG MUNICIPAL CENTER
2 WOODWARD AVE. SUITE 601
DETROIT, MICHIGAN 48226
PHONE: (313) 224-3949 TTY: 711
WWW.DETROITMI.GOV

C-4 Illuminated, Double Sided Blade Sign
Quantity 1



METRO SIGNS
LIGHTING
METRO DETROIT OFFICE
11444 Main Avenue, Warren, MI 48090
DETROIT OFFICE
8480 E. Fisher, Ann Arbor, MI 48101
Phone: 586-759-2700
www.metroal.com

PERMIT DRAWING	
PROJECT NUMBER	TOTAL SQ. FEET
250285	12

Project
GW HOME // GARDNER WHITE

Date
3/18/2025

File Name
250285 GW Home.cdr

Drawing Title
250285 GW Home C-4 Blade Sign
Permit Drawing REV-00 Pg 6

Sales
Joe Stelzer

Designer
Connie Folio

Revision Number
REV-00

Revised By
JSS

Revision Date
XXX

© 2024 - This is an original, unpublished drawing created by Metro Detroit Signs. It is submitted for your approval. It is not to be shown to anyone outside your organization, reproduced or copied in any fashion. Ownership of this design is held by Metro Detroit Signs. Authorization to use this design must be obtained by Metro Detroit Signs. Colors depicted are a graphic representation. Refer to callouts for a full list of materials to be used.



1 column, rectangular, standard

Environmental Conditions

1.15 Vult height 3 second gust at 33 ft elevation per ASCE, Figure 26.5

1.16 Risk Category: Low or Normal II Suburban Hazards IV Exposed Critical

1.17 Wind Exposure: 1. House site elevations for 33 ft II, no obstructions - 3300 ft

1.18 at corner Sign proximity to corner or edge opening $K_{zt} = 1.0$

Sign Particulars

2.04 rectangular extension B (ft) from attachment

2.05 segment height B (ft) (or width if ceiling or horizontal mounted)

2.06 segment width A (ft) (or height if ceiling or horizontal mounted)

2.07 elevation E of sign (ft)

2.08 horizontal attachment columns (usually 1 column per mounting plate)

Calculated values

1.181 = sign area at 33 ft $phi = 0.198$ column area at 33 ft $gust\ totals = 12\ ft^2$

1.182 = K_{zt} velocity pressure exposure coefficient

1.183 = 1.0 from uniform pressure Class II and III, 0.88 alternate per ASCE Figure 26.5-1

1.184 = q_z (psf) velocity pressure at elevation Z using V_{33}

1.185 = P_{se} (psf) suction wind pressure using V_{33}

1.186 = F (ft) (ft) (ft) and shear force (ASD) on sign and column base

1.187 = M (ft) (ft) moment at wall (ASD) base

1.188 = M (ft) (ft) moment at wall (ASD) per column

1.189 = Shear on bolt (ft)

1.190 = section modulus (in³) required per column per calculated moment at wall

1.191 = section modulus (in³) provided by tube dimensions **ACCEPTABLE**

Details & Notes

1.192 = 1.15 Vult height 3 second gust at 33 ft elevation per ASCE, Figure 26.5-1

1.193 = 1.16 Risk Category: Low or Normal II Suburban Hazards IV Exposed Critical

1.194 = 1.17 Wind Exposure: 1. House site elevations for 33 ft II, no obstructions - 3300 ft

1.195 = 1.18 at corner Sign proximity to corner or edge opening $K_{zt} = 1.0$

1.196 = 2.04 rectangular extension B (ft) from attachment

1.197 = 2.05 segment height B (ft) (or width if ceiling or horizontal mounted)

1.198 = 2.06 segment width A (ft) (or height if ceiling or horizontal mounted)

1.199 = 2.07 elevation E of sign (ft)

1.200 = 2.08 horizontal attachment columns (usually 1 column per mounting plate)

1.201 = 2.09 section modulus (in³) required per column per calculated moment at wall

1.202 = 2.10 section modulus (in³) provided by tube dimensions **ACCEPTABLE**

Materials & Notes

1.203 = 1.204 = 1.205 = 1.206 = 1.207 = 1.208 = 1.209 = 1.210 = 1.211 = 1.212 = 1.213 = 1.214 = 1.215 = 1.216 = 1.217 = 1.218 = 1.219 = 1.220 = 1.221 = 1.222 = 1.223 = 1.224 = 1.225 = 1.226 = 1.227 = 1.228 = 1.229 = 1.230 = 1.231 = 1.232 = 1.233 = 1.234 = 1.235 = 1.236 = 1.237 = 1.238 = 1.239 = 1.240 = 1.241 = 1.242 = 1.243 = 1.244 = 1.245 = 1.246 = 1.247 = 1.248 = 1.249 = 1.250 = 1.251 = 1.252 = 1.253 = 1.254 = 1.255 = 1.256 = 1.257 = 1.258 = 1.259 = 1.260 = 1.261 = 1.262 = 1.263 = 1.264 = 1.265 = 1.266 = 1.267 = 1.268 = 1.269 = 1.270 = 1.271 = 1.272 = 1.273 = 1.274 = 1.275 = 1.276 = 1.277 = 1.278 = 1.279 = 1.280 = 1.281 = 1.282 = 1.283 = 1.284 = 1.285 = 1.286 = 1.287 = 1.288 = 1.289 = 1.290 = 1.291 = 1.292 = 1.293 = 1.294 = 1.295 = 1.296 = 1.297 = 1.298 = 1.299 = 1.300 = 1.301 = 1.302 = 1.303 = 1.304 = 1.305 = 1.306 = 1.307 = 1.308 = 1.309 = 1.310 = 1.311 = 1.312 = 1.313 = 1.314 = 1.315 = 1.316 = 1.317 = 1.318 = 1.319 = 1.320 = 1.321 = 1.322 = 1.323 = 1.324 = 1.325 = 1.326 = 1.327 = 1.328 = 1.329 = 1.330 = 1.331 = 1.332 = 1.333 = 1.334 = 1.335 = 1.336 = 1.337 = 1.338 = 1.339 = 1.340 = 1.341 = 1.342 = 1.343 = 1.344 = 1.345 = 1.346 = 1.347 = 1.348 = 1.349 = 1.350 = 1.351 = 1.352 = 1.353 = 1.354 = 1.355 = 1.356 = 1.357 = 1.358 = 1.359 = 1.360 = 1.361 = 1.362 = 1.363 = 1.364 = 1.365 = 1.366 = 1.367 = 1.368 = 1.369 = 1.370 = 1.371 = 1.372 = 1.373 = 1.374 = 1.375 = 1.376 = 1.377 = 1.378 = 1.379 = 1.380 = 1.381 = 1.382 = 1.383 = 1.384 = 1.385 = 1.386 = 1.387 = 1.388 = 1.389 = 1.390 = 1.391 = 1.392 = 1.393 = 1.394 = 1.395 = 1.396 = 1.397 = 1.398 = 1.399 = 1.400 = 1.401 = 1.402 = 1.403 = 1.404 = 1.405 = 1.406 = 1.407 = 1.408 = 1.409 = 1.410 = 1.411 = 1.412 = 1.413 = 1.414 = 1.415 = 1.416 = 1.417 = 1.418 = 1.419 = 1.420 = 1.421 = 1.422 = 1.423 = 1.424 = 1.425 = 1.426 = 1.427 = 1.428 = 1.429 = 1.430 = 1.431 = 1.432 = 1.433 = 1.434 = 1.435 = 1.436 = 1.437 = 1.438 = 1.439 = 1.440 = 1.441 = 1.442 = 1.443 = 1.444 = 1.445 = 1.446 = 1.447 = 1.448 = 1.449 = 1.450 = 1.451 = 1.452 = 1.453 = 1.454 = 1.455 = 1.456 = 1.457 = 1.458 = 1.459 = 1.460 = 1.461 = 1.462 = 1.463 = 1.464 = 1.465 = 1.466 = 1.467 = 1.468 = 1.469 = 1.470 = 1.471 = 1.472 = 1.473 = 1.474 = 1.475 = 1.476 = 1.477 = 1.478 = 1.479 = 1.480 = 1.481 = 1.482 = 1.483 = 1.484 = 1.485 = 1.486 = 1.487 = 1.488 = 1.489 = 1.490 = 1.491 = 1.492 = 1.493 = 1.494 = 1.495 = 1.496 = 1.497 = 1.498 = 1.499 = 1.500 = 1.501 = 1.502 = 1.503 = 1.504 = 1.505 = 1.506 = 1.507 = 1.508 = 1.509 = 1.510 = 1.511 = 1.512 = 1.513 = 1.514 = 1.515 = 1.516 = 1.517 = 1.518 = 1.519 = 1.520 = 1.521 = 1.522 = 1.523 = 1.524 = 1.525 = 1.526 = 1.527 = 1.528 = 1.529 = 1.530 = 1.531 = 1.532 = 1.533 = 1.534 = 1.535 = 1.536 = 1.537 = 1.538 = 1.539 = 1.540 = 1.541 = 1.542 = 1.543 = 1.544 = 1.545 = 1.546 = 1.547 = 1.548 = 1.549 = 1.550 = 1.551 = 1.552 = 1.553 = 1.554 = 1.555 = 1.556 = 1.557 = 1.558 = 1.559 = 1.560 = 1.561 = 1.562 = 1.563 = 1.564 = 1.565 = 1.566 = 1.567 = 1.568 = 1.569 = 1.570 = 1.571 = 1.572 = 1.573 = 1.574 = 1.575 = 1.576 = 1.577 = 1.578 = 1.579 = 1.580 = 1.581 = 1.582 = 1.583 = 1.584 = 1.585 = 1.586 = 1.587 = 1.588 = 1.589 = 1.590 = 1.591 = 1.592 = 1.593 = 1.594 = 1.595 = 1.596 = 1.597 = 1.598 = 1.599 = 1.600 = 1.601 = 1.602 = 1.603 = 1.604 = 1.605 = 1.606 = 1.607 = 1.608 = 1.609 = 1.610 = 1.611 = 1.612 = 1.613 = 1.614 = 1.615 = 1.616 = 1.617 = 1.618 = 1.61



CITY OF DETROIT
DEPARTMENT OF PUBLIC WORKS
CITY ENGINEERING DIVISION

COLEMAN A. YOUNG MUNICIPAL CENTER
2 WOODWARD AVE. SUITE 601
DETROIT, MICHIGAN 48226
PHONE: (313) 224-3949 TTY: 711
WWW.DETROITMI.GOV

 PLANNING & DEVELOPMENT DEPARTMENT 2 WOODWARD AVE SUITE 808, DETROIT, MI 48226		HISTORIC DISTRICT COMMISSION	
CERTIFICATE OF APPROPRIATENESS			
ADMINISTRATIVE APPROVAL			
Application Number: HDC2025-00195		Effective Date: 5/7/2025	
Project Address: 1201 Woodward		Issued to: Kevin Dalers	
Historic District: Lower Woodward Avenue		11444 Kaitz Ave. Warren, MI 48089	
Description of Work: Install three new signs: a wall sign on the south elevation, a wall sign on the east elevation canopy, and a projecting sign per the attached application			
With the Conditions that: n/a			
<small>Pursuant to Section 5(10) of the Michigan Local Historic District Act, as amended, being MCL 389.205 (10) and Sections 21-2-67 and 21-2-73 of the 2019 Detroit City Code, and Detroit Historic District Commission ("DHDC") delegation of administrative authority via Resolutions 97-01, 97-02, 98-01, 20-03, 21-04, and/or 21-07, as applicable, the staff of the DHDC has reviewed the above referenced application and hereby issues a Certificate of Appropriateness ("COA") for the description of work, effective date above, as it meets the Secretary of the Interior's Standards for Rehabilitation and the district's Elements of Design</small>			
For the Commission:  Daniel Rieden Senior Clerk to the Historic District Commission		PSR: 250507j	
<small>Post this COA at the subject property until work is complete. It is important to note that approval by the DHDC does not waive the responsibility to comply with any other applicable ordinances or statutes.</small>			



**CITY OF DETROIT
DEPARTMENT OF PUBLIC WORKS
CITY ENGINEERING DIVISION**

**COLEMAN A. YOUNG MUNICIPAL CENTER
2 WOODWARD AVE. SUITE 601
DETROIT, MICHIGAN 48226
PHONE: (313) 224-3949 TTY: 711
WWW.DETROITMI.GOV**

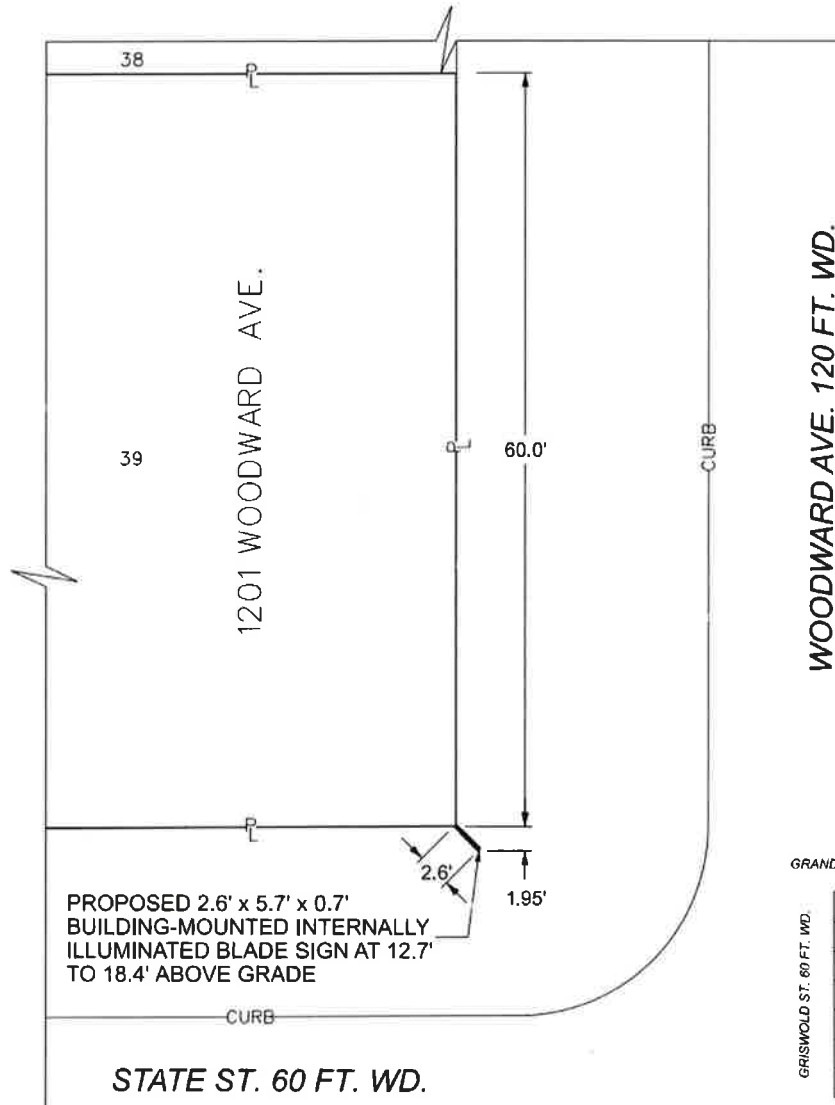


CITY OF DETROIT
DEPARTMENT OF PUBLIC WORKS
CITY ENGINEERING DIVISION

COLEMAN A. YOUNG MUNICIPAL CENTER
2 WOODWARD AVE. SUITE 601
DETROIT, MICHIGAN 48226
PHONE: (313) 224-3949 TTY: 711
WWW.DETROITMI.GOV

MAP-25-52

GRAND RIVER AVE. 60 FT. WD.



GRAND RIVER AVE. 60 FT. WD.

69	33
70	34
71	35
72	36
73	37
74	38
75	39

STATE ST. 60 FT. WD.

■ - REQUEST ENCROACHMENT
(FOR BUILDING-MOUNTED SIGN)

(FOR OFFICE USE ONLY)

CARTO 28 B

B					
A					
REVISIONS					
DESCRIPTION	DRAWN	CHECKED	APPROVED	DATE	
DRAWN BY	TS	CHECKED	AP/LC		
DATE	05-27-2025	APPROVED	GE		

REQUEST ENCROACHMENT
INTO WOODWARD AVE. AT
1201 WOODWARD AVE.

CITY OF DETROIT
CITY ENGINEERING DIVISION
SURVEY BUREAU

JOB NO. 25-52

DRAWG. NO.



CITY OF DETROIT
DEPARTMENT OF PUBLIC WORKS
CITY ENGINEERING DIVISION

COLEMAN A. YOUNG MUNICIPAL CENTER
2 WOODWARD AVE. SUITE 601
DETROIT, MICHIGAN 48226
PHONE: (313) 224-3949 TTY: 711
WWW.DETROITMI.GOV
