



**CITY OF DETROIT  
DEPARTMENT OF PUBLIC WORKS  
CITY ENGINEERING DIVISION**

**COLEMAN A. YOUNG MUNICIPAL CENTER  
2 WOODWARD AVE. SUITE 601  
DETROIT, MICHIGAN 48226  
PHONE: (313) 224-3949 TTY: 711  
WWW.DETROITMI.GOV**

---

To: Clerk's Office  
From: The Department of Public Works  
City Engineering Division  
MapsandRecordsBureau@DetroitMI.Gov  
(313) 224-3970

Petitioner:  
1201 Webward Avenue LLC  
630 WOODWARD AVENUE  
Detroit, MI, 48226

On behalf of the above-mentioned petitioner the Department of Public Works: City Engineering Division is submitting a petition request for the action below. The petitioner has received a project consultation from the Department of Public Works: City Engineering Division and has been advised the following:

Type of action recommended:

Petition for encroachment within the northerly part of State St., adjacent to the parcel commonly known as 1201 Woodward Ave., for the installation of a building-mounted internally illuminated blade sign.

Raven Wright  
Supervisor of Maps & Records  
Department of Public Works  
City Engineering Division  
313-224-3985



**CITY OF DETROIT**  
**DEPARTMENT OF PUBLIC WORKS**  
**CITY ENGINEERING DIVISION**

**COLEMAN A. YOUNG MUNICIPAL CENTER**  
**2 WOODWARD AVE. SUITE 601**  
**DETROIT, MICHIGAN 48226**  
**PHONE: (313) 224-3949 TTY: 711**  
**[WWW.DETROITMI.GOV](http://WWW.DETROITMI.GOV)**

---



CITY OF DETROIT  
DEPARTMENT OF PUBLIC WORKS  
CITY ENGINEERING DIVISION

COLEMAN A. YOUNG MUNICIPAL CENTER  
2 WOODWARD AVE. SUITE 601  
DETROIT, MICHIGAN 48226  
PHONE: (313) 224-3949 TTY: 711  
WWW.DETROITMI.GOV



DATE: 5/23/25  
TO: City of Detroit DPW  
FROM: Kevin Deters  
Metro Signs & Lighting  
RE: Encroachment for projecting sign at "GW Home Detroit"  
1201 Woodward  
SGN2025-00091

We are applying for a permit for a projecting sign. The sign is a 1.66' x 7.25' (12 sq feet). The total projection is 26 inches from the building. The sign's underclearance is 13.5 feet.

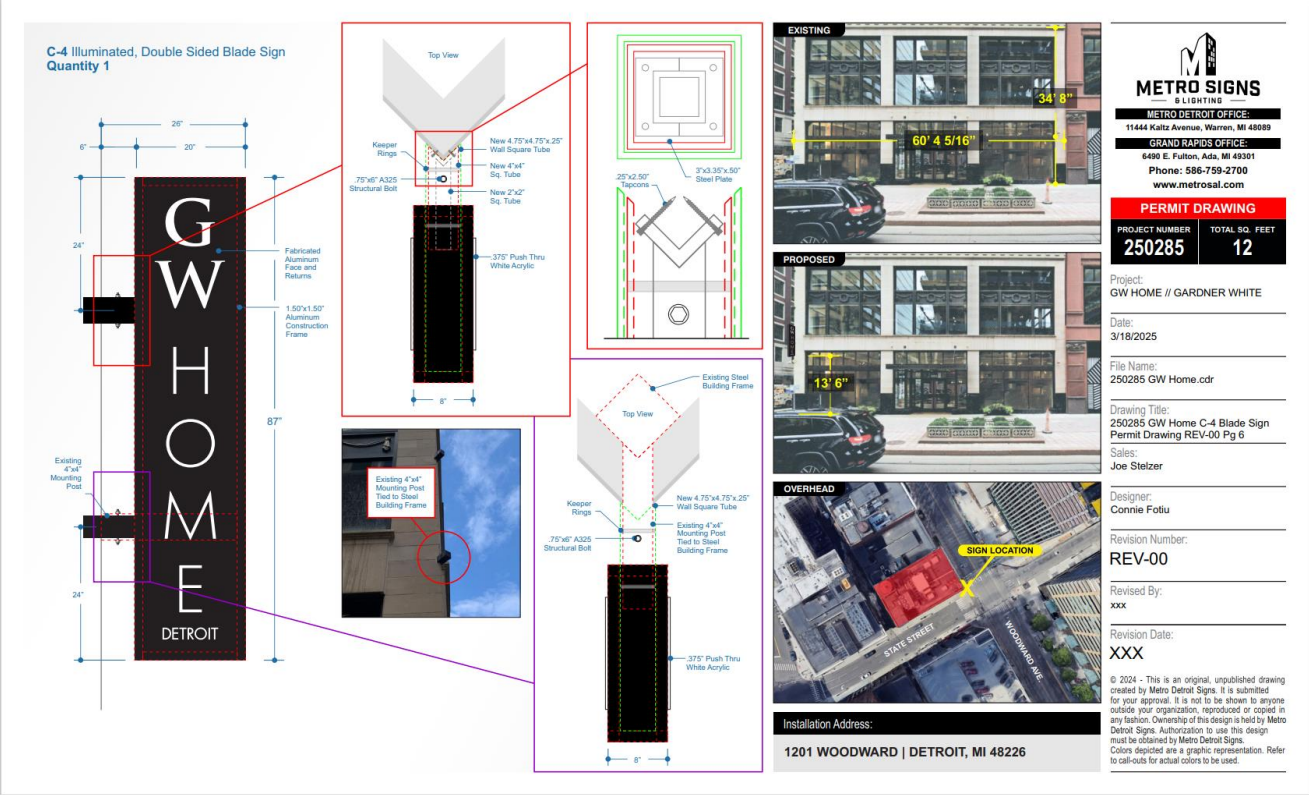
Feel free to call me at (586)759-2700 if anything else is needed. Thank you for your assistance.

*Kevin Deters* 5-23-25



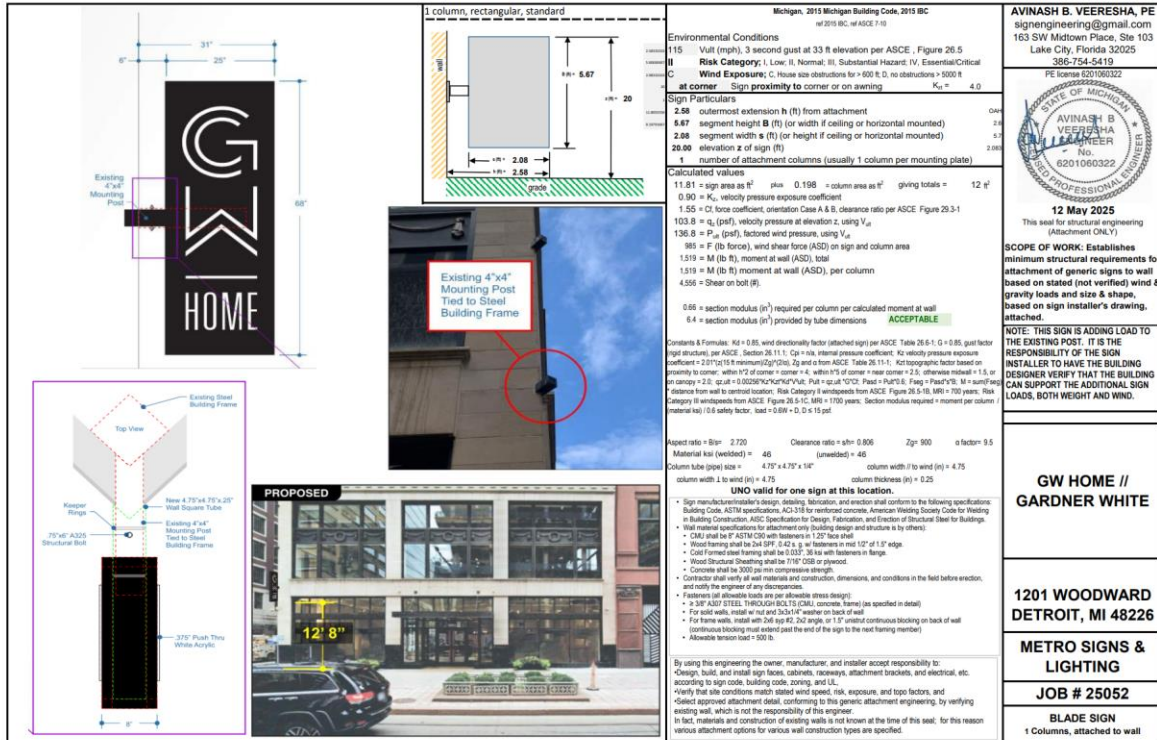
CITY OF DETROIT  
DEPARTMENT OF PUBLIC WORKS  
CITY ENGINEERING DIVISION

COLEMAN A. YOUNG MUNICIPAL CENTER  
2 WOODWARD AVE. SUITE 601  
DETROIT, MICHIGAN 48226  
PHONE: (313) 224-3949 TTY: 711  
WWW.DETROITMI.GOV





**COLEMAN A. YOUNG MUNICIPAL CENTER**  
**2 WOODWARD AVE. SUITE 601**  
**DETROIT, MICHIGAN 48226**  
**PHONE: (313) 224-3949 TTY: 711**  
**WWW.DETROITMI.GOV**





CITY OF DETROIT  
DEPARTMENT OF PUBLIC WORKS  
CITY ENGINEERING DIVISION

COLEMAN A. YOUNG MUNICIPAL CENTER  
2 WOODWARD AVE. SUITE 601  
DETROIT, MICHIGAN 48226  
PHONE: (313) 224-3949 TTY: 711  
WWW.DETROITMI.GOV

 PLANNING & DEVELOPMENT DEPARTMENT 2 WOODWARD AVE SUITE 808, DETROIT, MI 48226	<b>HISTORIC DISTRICT COMMISSION</b>
<b>CERTIFICATE OF APPROPRIATENESS</b> <b>ADMINISTRATIVE APPROVAL</b>	
<b>Application Number:</b> HDC2025-00195	<b>Effective Date:</b> 5/7/2025
<b>Project Address:</b> 1201 Woodward	<b>Issued to:</b> Kevin Deters
<b>Historic District:</b> Lower Woodward Avenue	11444 Kaltz Ave. Warren, MI 48089
<b>Description of Work:</b> Install three new signs: a wall sign on the south elevation, a wall sign on the east elevation canopy, and a projecting sign per the attached application	
<b>With the Conditions that:</b> n/a	
<p>Pursuant to Section 5(10) of the Michigan Local Historic District Act, as amended, being MCL 399.205 (10) and Sections 21-2-57 and 21-2-73 of the 2019 Detroit City Code, and Detroit Historic District Commission ("DHDC") delegation of administrative authority via Resolutions 97-01, 97-02, 98-01, 20-03, 21-04, and/or 21-07, as applicable, the staff of the DHDC has reviewed the above referenced application and hereby issues a Certificate of Appropriateness ("COA") for the description of work, effective date above, as it meets the Secretary of the Interior's Standards for Rehabilitation and the district's Elements of Design</p>	
For the Commission:  Daniel Rieden Senior Clerk to the Historic District Commission	PSR: 250507jr
Post this COA at the subject property until work is complete. It is important to note that approval by the DHDC does not waive the applicant's responsibility to comply with any other applicable ordinances or statutes.	



**CITY OF DETROIT**  
**DEPARTMENT OF PUBLIC WORKS**  
**CITY ENGINEERING DIVISION**

**COLEMAN A. YOUNG MUNICIPAL CENTER**  
**2 WOODWARD AVE. SUITE 601**  
**DETROIT, MICHIGAN 48226**  
**PHONE: (313) 224-3949 TTY: 711**  
**[WWW.DETROITMI.GOV](http://WWW.DETROITMI.GOV)**

---

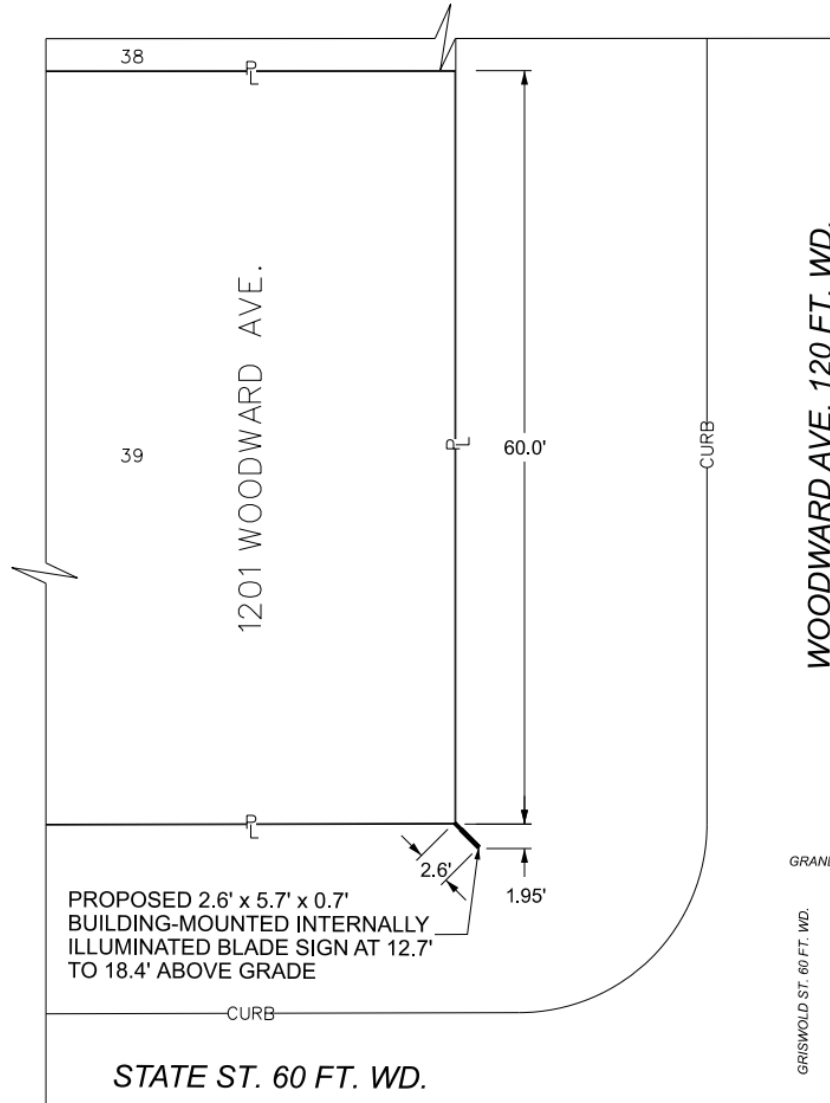


CITY OF DETROIT  
DEPARTMENT OF PUBLIC WORKS  
CITY ENGINEERING DIVISION

COLEMAN A. YOUNG MUNICIPAL CENTER  
2 WOODWARD AVE. SUITE 601  
DETROIT, MICHIGAN 48226  
PHONE: (313) 224-3949 TTY: 711  
WWW.DETROITMI.GOV

MAP-25-52

GRAND RIVER AVE. 60 FT. WD.



GRAND RIVER AVE. 60 FT. WD.

69	33
70	34
71	35
72	36
73	37
74	38
75	39

GRISWOLD ST. 60 FT. WD.

WOODWARD AVE. 120 FT. WD.

STATE ST. 60 FT. WD.

■ - REQUEST ENCROACHMENT  
(FOR BUILDING-MOUNTED SIGN)

(FOR OFFICE USE ONLY)

CARTO 28 B

B					
A					
REVISIONS					
DESCRIPTION	DRWN	CHEK	APPD	DATE	
DRAWN BY	TS	CHECKED	AP/LC		
DATE	05-27-2025	APPROVED	GE		

REQUEST ENCROACHMENT  
INTO WOODWARD AVE. AT  
1201 WOODWARD AVE.

CITY OF DETROIT  
CITY ENGINEERING DIVISION  
SURVEY BUREAU

JOB NO. 25-52

DRWG. NO.





**CITY OF DETROIT**  
**DEPARTMENT OF PUBLIC WORKS**  
**CITY ENGINEERING DIVISION**

**COLEMAN A. YOUNG MUNICIPAL CENTER**  
**2 WOODWARD AVE. SUITE 601**  
**DETROIT, MICHIGAN 48226**  
**PHONE: (313) 224-3949 TTY: 711**  
**[WWW.DETROITMI.GOV](http://WWW.DETROITMI.GOV)**

---