

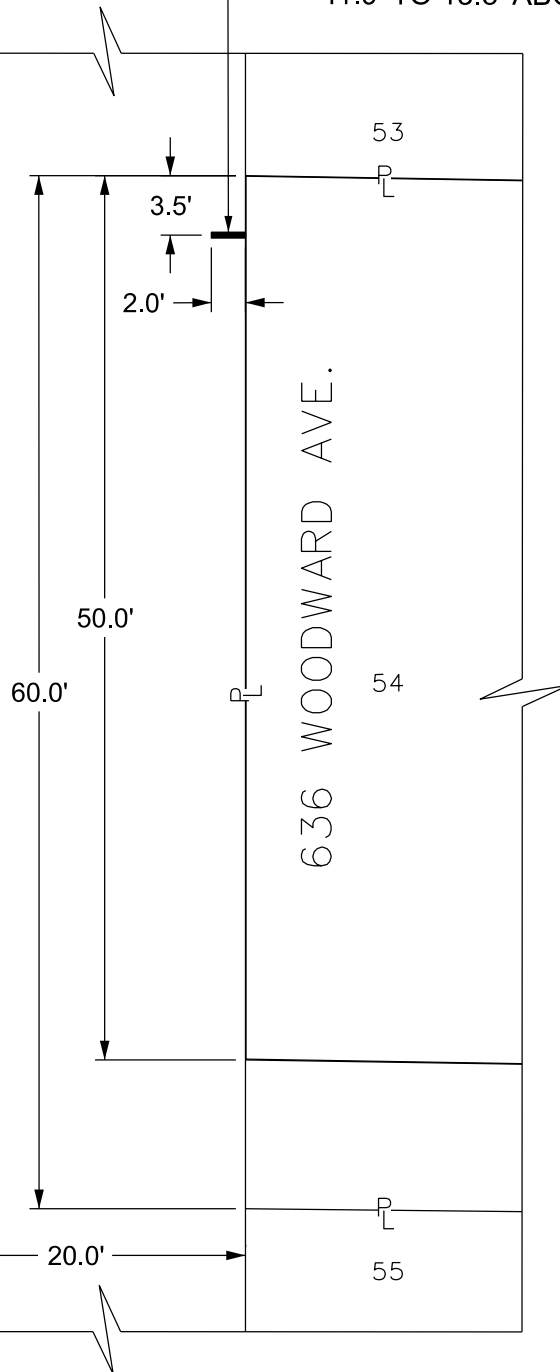


CADILLAC SQUARE 200 FT. WD.

PROPOSED 1.6' x 2.0' x 0.3'  
BUILDING-MOUNTED INTERNALLY  
ILLUMINATED BLADE SIGN AT  
11.9' TO 13.5' ABOVE GRADE

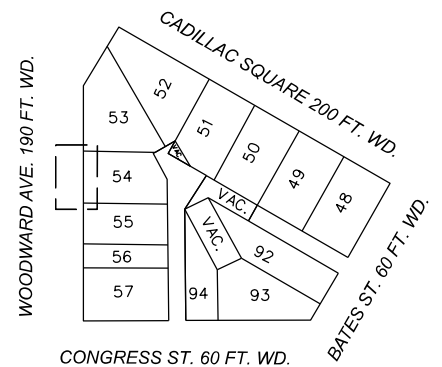
WOODWARD AVE. 190 FT. WD.

CURB



636 WOODWARD AVE.

CONGRESS ST. 60 FT. WD.



 - REQUEST ENCROACHMENT  
(FOR BUILDING-MOUNTED SIGN)

(FOR OFFICE USE ONLY)

CARTO 28 F

B					
A					
DESCRIPTION		DRWN	CHKD	APPD	DATE
REVISIONS					
DRAWN BY		CHECKED		AP/LC	
DATE		APPROVED		GE	
05-21-2025					

REQUEST ENCROACHMENT  
INTO WOODWARD AVE. AT  
636 WOODWARD AVE.

CITY OF DETROIT CITY ENGINEERING DIVISION SURVEY BUREAU	
JOB NO.	25-49
DRWG. NO.	