



CITY OF DETROIT
DEPARTMENT OF PUBLIC WORKS
CITY ENGINEERING DIVISION

COLEMAN A. YOUNG MUNICIPAL CENTER
2 WOODWARD AVE. SUITE 601
DETROIT, MICHIGAN 48226
PHONE: (313) 224-3949 TTY: 711
WWW.DETROITMI.GOV

To: Clerk's Office
From: The Department of Public Works
City Engineering Division
MapsandRecordsBureau@DetroitMI.Gov
(313) 224-3970

Petitioner:
630 Webward Building, LLC
630 Woodward Avenue
Detroit, MI 48226

On behalf of the above-mentioned petitioner the Department of Public Works: City Engineering Division is submitting a petition request for the below mentioned action. The petitioner has received a project consultation from the Department of Public Works: City Engineering Division and has been advised the following:

Type of action recommended:

Petition to request encroachment within the easterly part of Woodward Ave., for the installation of a building mounted, internally illuminated, blade sign.

Georgine Gersdorff
Manager II
Department of Public Works
City Engineering Division
313-224-3985



CITY OF DETROIT
DEPARTMENT OF PUBLIC WORKS
CITY ENGINEERING DIVISION

COLEMAN A. YOUNG MUNICIPAL CENTER
2 WOODWARD AVE. SUITE 601
DETROIT, MICHIGAN 48226
PHONE: (313) 224-3949 TTY: 711
WWW.DETROITMI.GOV



DATE: 5/16/25
TO: City of Detroit DPW
FROM: Kevin Deters
Metro Signs & Lighting
RE: Encroachment for projecting sign at "Cava"
630 Woodward AKA 636 Woodward
SGN2025-00119

We are applying for a permit for a projecting sign at Cava. It is on the west elevation along Woodward Ave. The sign is a 1.66' diameter circle (2.16 sq feet). The total projection is 2 feet from the building. The sign's underclearance is 11.916 feet.

Feel free to call me at (586)759-2700 if anything else is needed. Thank you for your assistance.

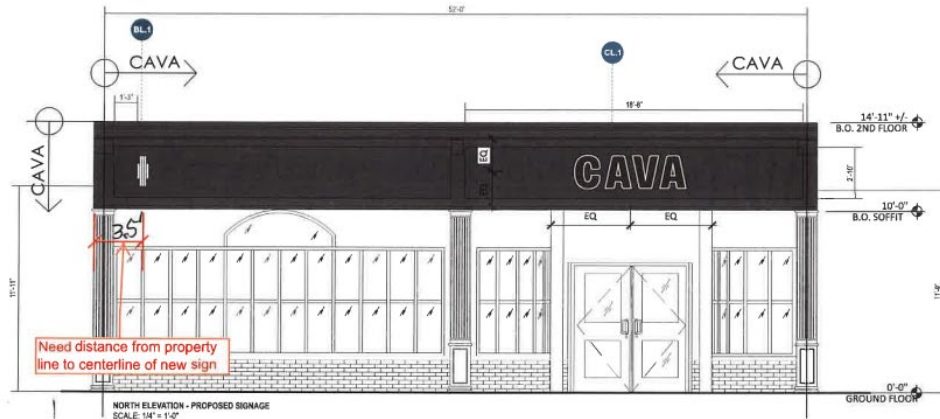
Kevin Deters 5-16-25



CITY OF DETROIT
DEPARTMENT OF PUBLIC WORKS
CITY ENGINEERING DIVISION

COLEMAN A. YOUNG MUNICIPAL CENTER
2 WOODWARD AVE. SUITE 601
DETROIT, MICHIGAN 48226
PHONE: (313) 224-3949 TTY: 711
WWW.DETROITMI.GOV

NORTH ELEVATION



3.5 feet

JONES SIGN Your vision. Accomplished. <small>A Division of Jones & Jones</small>	JOB # 291349_RS DATE 08/24/2018 DESIGNED BY A. GREENGLADE CHECKED BY J. DAVIS PROJECT MANAGER A. MCCANN	REQUIRED: <input type="checkbox"/> FIELD SURVEY <input type="checkbox"/> PAINT COLOR <input type="checkbox"/> FONTS <input type="checkbox"/> VECTOR NETWORK <input type="checkbox"/> CLIENT PMS COLOR <input type="checkbox"/> ENGINEERING OTHER:	LAMPED TO ANY/ALL DATE CLIENT APPROVAL DATE	CAVA	CAVA 636 WOODWARD AVENUE DETROIT, MI 48226	SHEET NUMBER 6.0

This is an original, unpublished drawing by Jones Sign Co., Inc. It is for your personal use in connection with a project being performed for you by JONES SIGN. It is not to be shown to anyone outside of your organization, nor is it to be used, reproduced, copied or exhibited in any fashion. Use of the drawing for the benefit of anyone other than the person or persons for whom it was prepared is prohibited. The drawing is the property of Jones Sign Co., Inc. and is to be returned to the company upon completion of the project.



CITY OF DETROIT
DEPARTMENT OF PUBLIC WORKS
CITY ENGINEERING DIVISION

COLEMAN A. YOUNG MUNICIPAL CENTER
2 WOODWARD AVE. SUITE 601
DETROIT, MICHIGAN 48226
PHONE: (313) 224-3949 TTY: 711
WWW.DETROITMI.GOV

MAP-25-49

CADILLAC SQUARE 200 FT. WD.

PROPOSED 1.6' x 2.0' x 0.3'
BUILDING-MOUNTED INTERNALLY
ILLUMINATED BLADE SIGN AT
11.9' TO 13.5' ABOVE GRADE

WOODWARD AVE. 190 FT. WD.

CURB

60.0'

50.0'

20.0'

636 WOODWARD AVE.

53

54

55

CONGRESS ST. 60 FT. WD.

WOODWARD AVE. 190 FT. WD.

CADILLAC SQUARE 200 FT. WD.

CONGRESS ST. 60 FT. WD.

BATES ST. 60 FT. WD.

- REQUEST ENCROACHMENT
(FOR BUILDING-MOUNTED SIGN)

(FOR OFFICE USE ONLY)

CARTO 28 F

B					
A					
DESCRIPTION	DATE	CHKD	APPD	DATE	
REVISIONS					
DRAWN BY	TS	CHECKED	AP/LC		
DATE	05-21-2025	APPROVED	GE		

REQUEST ENCROACHMENT
INTO WOODWARD AVE. AT
636 WOODWARD AVE.

CITY OF DETROIT
CITY ENGINEERING DIVISION
SURVEY BUREAU

JOB NO. 25-49

DRWG. NO.