

Janice M. Winfrey
City Clerk

City of Detroit
OFFICE OF THE CITY CLERK

Andre P. Gilbert II
Deputy City Clerk

DEPARTMENT PETITION REFERENCE COMMUNICATION

To: The Department or Commission Listed Below

From: Janice M Winfrey, Detroit City Clerk

The following petition is herewith referred to you for report and recommendation to the City Council.

In accordance with that body's directive, kindly return the same with your report in duplicate within four (4) weeks.

Petition No.	2025-140
Name of Petitioner	1201 Webward Avenue, LLC
Description of Petition	Petition to request encroachment into the northerly part of State St. for the installation of an on-site address sign.
Type of Petition	Alley Vacation/Encroachment/Utility Vacation
Submission Date	06/10/25
Concerned Departments	Media Services, Building & Safety Engineering, Police Department, Fire Department, Municipal Parking Department, Transportation Department, Health Department, General Services Department
Petitioner Contact	Michael Marks P.E. (Ph) 313-962-4442 mmarks@giffelswebster.com



**CITY OF DETROIT
DEPARTMENT OF PUBLIC WORKS
CITY ENGINEERING DIVISION**

**COLEMAN A. YOUNG MUNICIPAL CENTER
2 WOODWARD AVE. SUITE 601
DETROIT, MICHIGAN 48226
PHONE: (313) 224-3949 TTY: 711
WWW.DETROITMI.GOV**

To: Clerk's Office
From: The Department of Public Works
City Engineering Division
MapsandRecordsBureau@DetroitMI.Gov
(313) 224-3970

Petitioner:
1201 Webward Avenue, LLC
630 Woodward Avenue
Detroit, MI 48226

On behalf of the above-mentioned petitioner the Department of Public Works: City Engineering Division is submitting a petition request for the below mentioned action. The petitioner has received a project consultation from the Department of Public Works: City Engineering Division and has been advised the following:

Type of action recommended:

Petition to request encroachment into the northerly part of State St. for the installation of an on-site address sign.

Georgine Gersdorff
Manager II
Department of Public Works
City Engineering Division
313-224-3985



**CITY OF DETROIT
DEPARTMENT OF PUBLIC WORKS
CITY ENGINEERING DIVISION**

**COLEMAN A. YOUNG MUNICIPAL CENTER
2 WOODWARD AVE. SUITE 601
DETROIT, MICHIGAN 48226
PHONE: (313) 224-3949 TTY: 711
WWW.DETROITMI.GOV**



April 25, 2025

**DPW, City Engineering Division
200 Coleman A. Young Municipal Center
2 Woodward Avenue
Detroit, Michigan 48226**

RE: Giffels Webster – Request for an encroachment within the public right-of-way of State Street (60 feet wide) between Woodward Ave (120 feet wide) to the East and the Public Alley (20 feet wide) to the West.

Giffels Webster, 28 W. Adams, Suite 1200, Detroit, Michigan 48226 on behalf of 1201 WEBWARD AVENUE LLC, 630 Woodward Avenue, Detroit, MI 48226, respectfully requests the following encroachment into the right-of-way of State Street (60 feet wide) between Woodward Ave (120 feet wide) to the East and the Public Alley (20 feet wide) to the West, in the City of Detroit:

- An above grade encroachment into the State Street right-of-way (60 feet wide) for a sign mounted on the building facade that starts 20.6 feet east of the southwest corner of the parcel of 1201 Woodward Ave and extends 1 foot east. This sign will encroach 3 feet into State Street right-of-way (60 feet wide) starting 9.0 feet above grade extending to 10.5 feet above grade.

Please refer to the attached detailed sketch for further clarification.

If you should have any questions, please do not hesitate to contact me at (P) 313.962.4442 or at mmarks@giffelswebster.com.

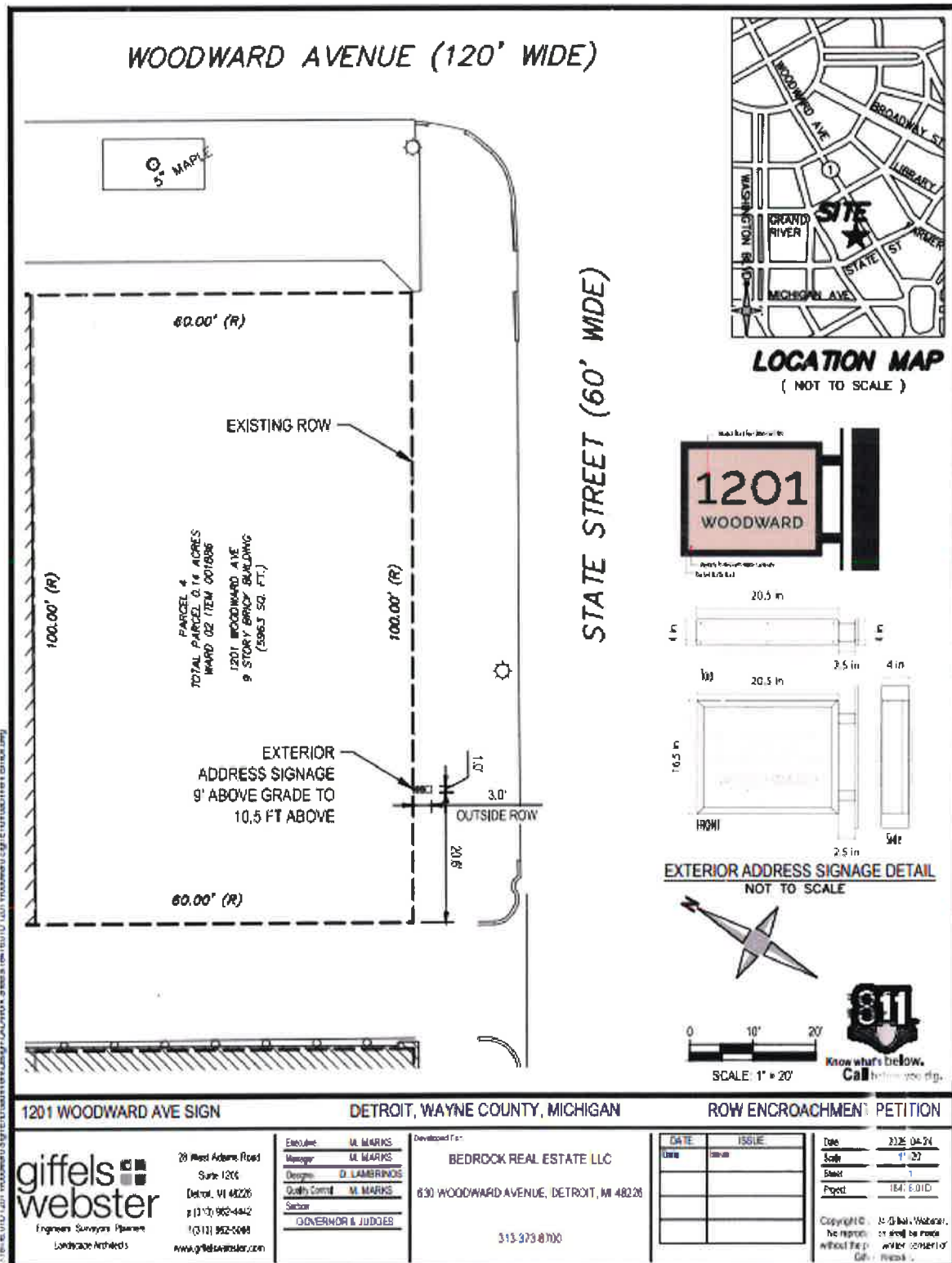
Respectfully,

**Michael Marks P.E.,
Treasurer | Partner
Giffels Webster**



CITY OF DETROIT
DEPARTMENT OF PUBLIC WORKS
CITY ENGINEERING DIVISION

COLEMAN A. YOUNG MUNICIPAL CENTER
2 WOODWARD AVE. SUITE 601
DETROIT, MICHIGAN 48226
PHONE: (313) 224-3949 TTY: 711
WWW.DETROITMI.GOV





MAP-25-43



PUBLIC ALLEY 20 FT. WD.

39

1201 WOODWARD AVE.

WOODWARD AVE. 120 FT. WD.

WALL MOUNTED SIGN, 3' X 1.5' X .3'
FROM 9' TO 10.5' ABOVE GRADE

٤٠

STATE ST. 60 FT. WD.

GRAND RIVER AVE. 60 FT. WD

GRISWOLD D. ST. 60 FT. WAD.

69

70

21

38

33

39

17

100

13

— 花 —

Notes

11

 - REQUEST ENCROACHMENT
(FOR ABOVE GRADE SIGN)

(FOR OFFICE USE ONLY)

STATE ST. 60 FT. WD

CARTO 28 B

B					
A					
DESCRIPTION		ISSN	CHD	APPR	DATE
REVISIONS					
REATH BY	LC	CHGLOG	AP/TS		
DATE	04-30-2025	APPROVED	GE		

**REQUEST ENCROACHMENT
FOR ABOVE GRADE SIGN
AT 1201 WOODWARD AVE.**

CITY OF DETROIT
CITY ENGINEERING DIVISION
SURVEY BUREAU

JOB NO. 25-43

DRAWING NO.