



CITY OF DETROIT
DEPARTMENT OF PUBLIC WORKS
CITY ENGINEERING DIVISION

COLEMAN A. YOUNG MUNICIPAL CENTER
2 WOODWARD AVE. SUITE 601
DETROIT, MICHIGAN 48226
PHONE: (313) 224-3949 TTY: 711
WWW.DETROITMI.GOV

To: Clerk's Office
From: The Department of Public Works
City Engineering Division
MapsandRecordsBureau@DetroitMI.Gov
(313) 224-3970

Petitioner:
1201 Webward Avenue, LLC
630 Woodward Avenue
Detroit, MI 48226

On behalf of the above-mentioned petitioner the Department of Public Works: City Engineering Division is submitting a petition request for the below mentioned action. The petitioner has received a project consultation from the Department of Public Works: City Engineering Division and has been advised the following:

Type of action recommended:

Petition to request encroachment into the northerly part of State St. for the installation of an on-site address sign.

Georgine Gersdorff
Manager II
Department of Public Works
City Engineering Division
313-224-3985



CITY OF DETROIT
DEPARTMENT OF PUBLIC WORKS
CITY ENGINEERING DIVISION

COLEMAN A. YOUNG MUNICIPAL CENTER
2 WOODWARD AVE. SUITE 601
DETROIT, MICHIGAN 48226
PHONE: (313) 224-3949 TTY: 711
WWW.DETROITMI.GOV



April 25, 2025

**DPW, City Engineering Division
200 Coleman A. Young Municipal Center
2 Woodward Avenue
Detroit, Michigan 48226**

RE: Giffels Webster – Request for an encroachment within the public right-of-way of State Street (60 feet wide) between Woodward Ave (120 feet wide) to the East and the Public Alley (20 feet wide) to the West.

Giffels Webster, 28 W. Adams, Suite 1200, Detroit, Michigan 48226 on behalf of 1201 WEBWARD AVENUE LLC, 630 Woodward Avenue, Detroit, MI 48226, respectfully requests the following encroachment into the right-of-way of State Street (60 feet wide) between Woodward Ave (120 feet wide) to the East and the Public Alley (20 feet wide) to the West, in the City of Detroit:

- An above grade encroachment into the State Street right-of-way (60 feet wide) for a sign mounted on the building facade that starts 20.6 feet east of the southwest corner of the parcel of 1201 Woodward Ave and extends 1 foot east. This sign will encroach 3 feet into State Street right-of-way (60 feet wide) starting 9.0 feet above grade extending to 10.5 feet above grade.

Please refer to the attached detailed sketch for further clarification.

If you should have any questions, please do not hesitate to contact me at (P) 313.962.4442 or at mmarks@giffelswebster.com.

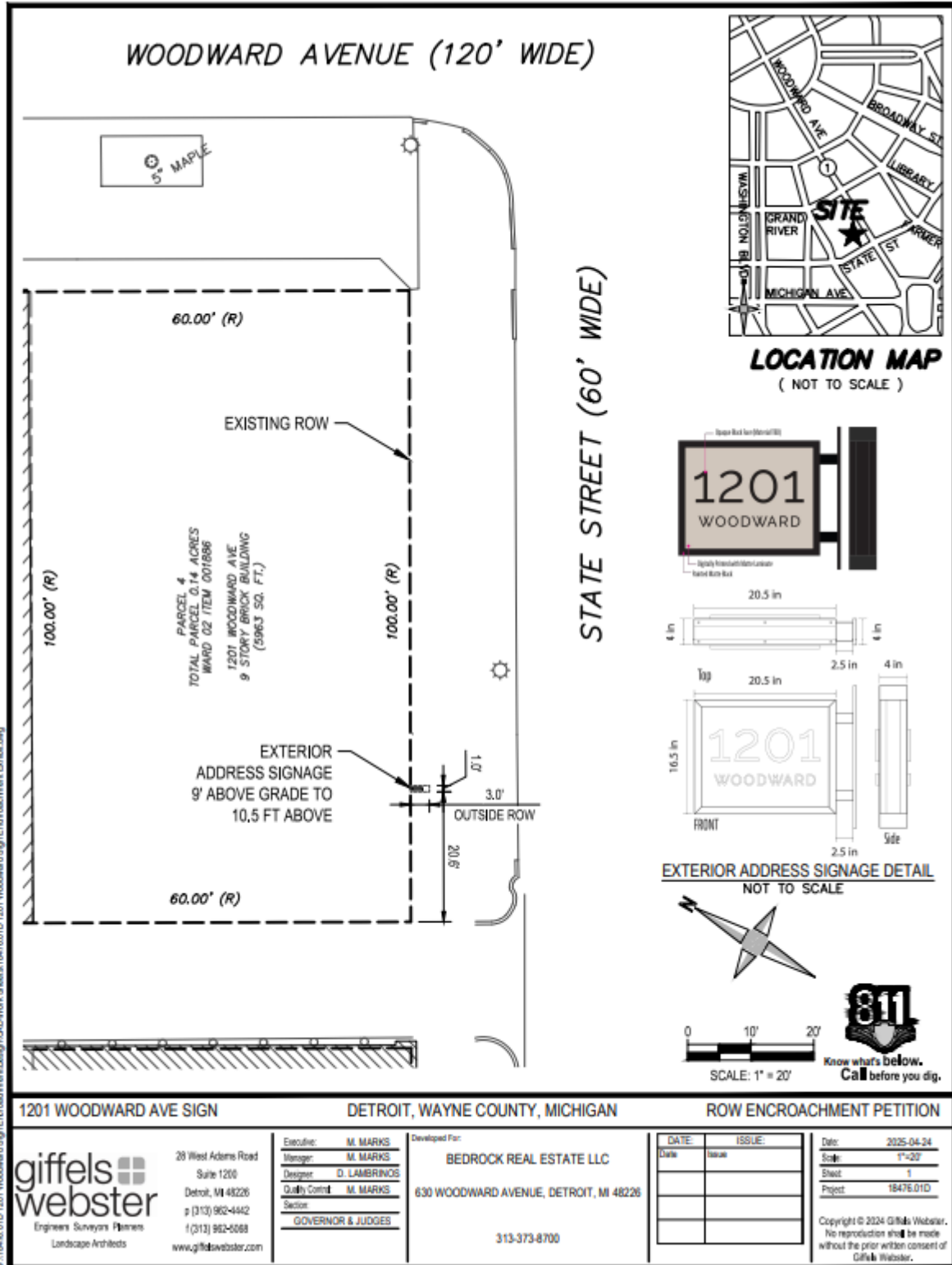
Respectfully,

Michael Marks P.E.,
Treasurer | Partner
Giffels Webster



CITY OF DETROIT
DEPARTMENT OF PUBLIC WORKS
CITY ENGINEERING DIVISION

COLEMAN A. YOUNG MUNICIPAL CENTER
2 WOODWARD AVE. SUITE 601
DETROIT, MICHIGAN 48226
PHONE: (313) 224-3949 TTY: 711
WWW.DETROITMI.GOV





CITY OF DETROIT
DEPARTMENT OF PUBLIC WORKS
CITY ENGINEERING DIVISION

COLEMAN A. YOUNG MUNICIPAL CENTER
2 WOODWARD AVE. SUITE 601
DETROIT, MICHIGAN 48226
PHONE: (313) 224-3949 TTY: 711
WWW.DETROITMI.GOV

MAP-25-43

GRAND RIVER AVE. 60 FT. WD.

39

1201 WOODWARD AVE.

PUBLIC ALLEY 20 FT. WD.

WOODWARD AVE. 120 FT. WD.

WALL MOUNTED SIGN, 3' X 1.5' X .3'
FROM 9' TO 10.5' ABOVE GRADE

3'

1'

20.6'

STATE ST. 60 FT. WD.

GRAND RIVER AVE. 60 FT. WD.

GRISWOLD ST. 60 FT. WD.

WOODWARD AVE. 120 FT. WD.

STATE ST. 60 FT. WD.

69 33

71 35

73 37

75 39

CARTO 28 B

- REQUEST ENCROACHMENT
(FOR ABOVE GRADE SIGN)

(FOR OFFICE USE ONLY)

B				
A				
DESCRIPTION	REVISED	APP	DATE	
DRAWN BY	LC	CHECKED	AP/TS	
DATE	04-30-2025	APPROVED	GE	

REQUEST ENCROACHMENT
FOR ABOVE GRADE SIGN
AT 1201 WOODWARD AVE.

CITY OF DETROIT
CITY ENGINEERING DIVISION
SURVEY BUREAU

JOB NO. 25-43

DRWG. NO.