

Janice M. Winfrey
City Clerk

City of Detroit
OFFICE OF THE CITY CLERK

Andre P. Gilbert II
Deputy City Clerk

DEPARTMENT PETITION REFERENCE COMMUNICATION

To: The Department or Commission Listed Below

From: Janice M Winfrey, Detroit City Clerk

The following petition is herewith referred to you for report and recommendation to the City Council.

In accordance with that body's directive, kindly return the same with your report in duplicate within four (4) weeks.

Petition No.	2025-128
Name of Petitioner	Detroit Public Schools
Description of Petition	Petition to request for the Decertification/Vacation, 'Outright' of Rosemont Avenue, lying Southerly of Cathedral Avenue and lying northerly of Dover Street and within the parcel commonly known as 18445 Cathedral Street.
Type of Petition	Alley Vacation/Encroachment/Utility Vacation
Submission Date	06/03/25
Concerned Departments	Media Services, Building & Safety Engineering, Police Department, Fire Department, Municipal Parking Department, Transportation Department, Health Department, General Services Department
Petitioner Contact	Dave Root, PE 28 W. Adams St. Suite 1200 Detroit, MI 48226 (Ph) 313-962-4442 droot@giffelswebster.com



**CITY OF DETROIT
DEPARTMENT OF PUBLIC WORKS
CITY ENGINEERING DIVISION**

**COLEMAN A. YOUNG MUNICIPAL CENTER
2 WOODWARD AVE. SUITE 601
DETROIT, MICHIGAN 48226
PHONE: (313) 224-3949 TTY: 711
WWW.DETROITMI.GOV**

To: Clerk's Office
From: The Department of Public Works
City Engineering Division
MapsandRecordsBureau@DetroitMI.Gov
(313) 224-3970

Petitioner:
Detroit Public Schools
1601 Farnsworth, Building C
Detroit, MI 48211

On behalf of the above-mentioned petitioner the Department of Public Works: City Engineering Division is submitting a petition request for the below mentioned action. The petitioner has received a project consultation from the Department of Public Works: City Engineering Division and has been advised the following:

Type of action recommended:

Petition to request for the Decertification/Vacation, 'Outright' of Rosemont Avenue, lying Southerly of Cathedral Avenue and lying northerly of Dover Street and within the parcel commonly known as 18445 Cathedral Street.

Georgine Gersdorff
Manager II
Department of Public Works
City Engineering Division
313-224-3985



CITY OF DETROIT
DEPARTMENT OF PUBLIC WORKS
CITY ENGINEERING DIVISION

COLEMAN A. YOUNG MUNICIPAL CENTER
2 WOODWARD AVE. SUITE 601
DETROIT, MICHIGAN 48226
PHONE: (313) 224-3949 TTY: 711
WWW.DETROITMI.GOV



January 9, 2025

City of Detroit Clerk
Honorable Detroit City Council
2 Woodward Avenue
200 Coleman A. Young Municipal Center
Detroit, Michigan 48226

Project: DPSCD Cody High School
Project #: 20511.00D

RE: Giffels Webster – Request for outright vacation of Rosemont Ave (60 feet wide) between Cathedral (150 feet wide) and Dover (60 feet wide).

Giffels Webster, 28 W. Adams, Suite 1200, Detroit, Michigan 48226 on behalf of the Detroit Public School District respectfully requests the following outright vacation within the block bounded by Cathedral Avenue (150 feet wide), Ashton Avenue (60 feet wide), Dover Avenue (60 feet wide), Penrod (60 feet wide).

- Rosemont (60 feet wide) having been previously vacated with easement for Detroit Water and Sewerage Department, April 26, 1949; J.C.C. Pg. 1217, from Cathedral (150 feet wide) to Dover Avenue (60 feet wide) to be outright vacated due to water main modification.

See attached exhibit for further clarification. We will be working with the City of Detroit's Department of Public Works in collaboration with Detroit Water and Sewerage Department to satisfy the necessary requirements of a new water main to accommodate the new school construction.

If you should have any questions, please do not hesitate to contact Dave Root at 313.962.444 or droot@giffelswebster.com.

Respectfully

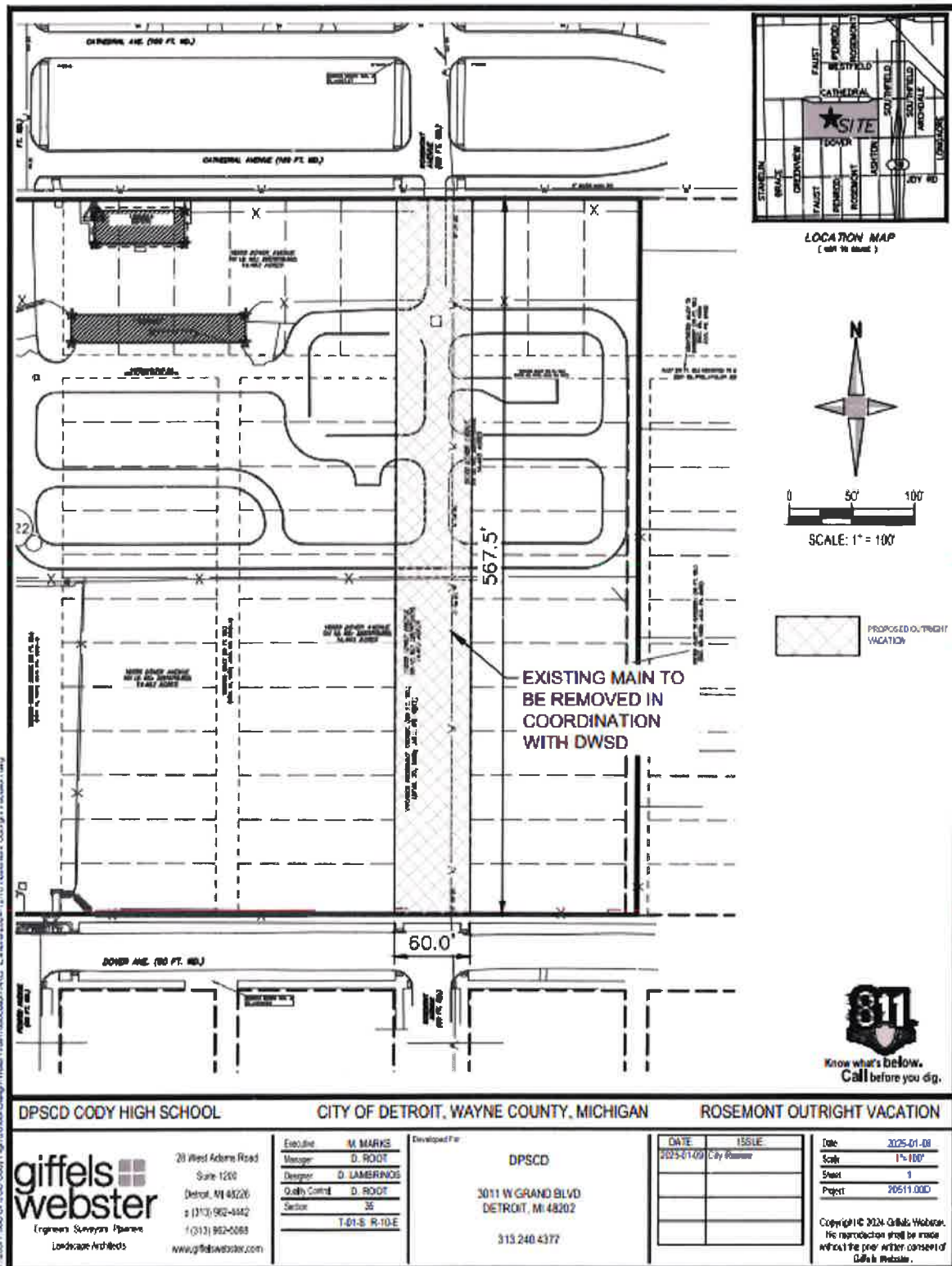
GIFFELS WEBSTER

Dave Root, PE
Senior Project Manager



CITY OF DETROIT
DEPARTMENT OF PUBLIC WORKS
CITY ENGINEERING DIVISION

COLEMAN A. YOUNG MUNICIPAL CENTER
2 WOODWARD AVE. SUITE 601
DETROIT, MICHIGAN 48226
PHONE: (313) 224-3949 TTY: 711
WWW.DETROITMI.GOV



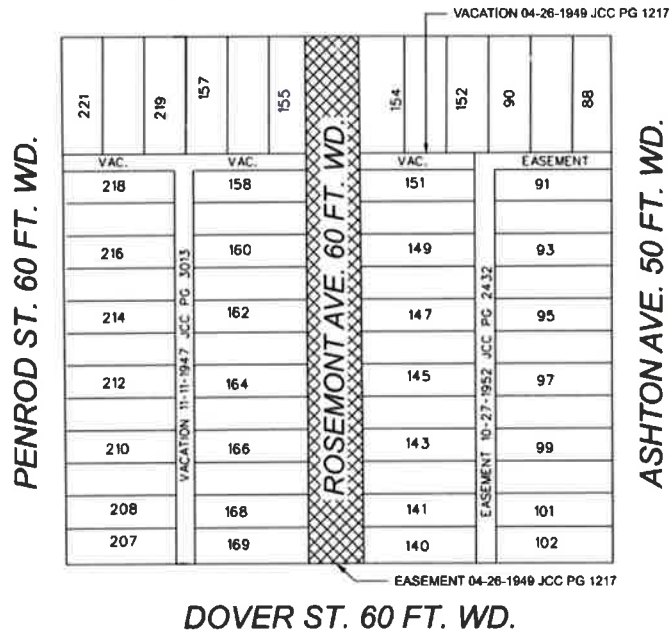


CITY OF DETROIT
DEPARTMENT OF PUBLIC WORKS
CITY ENGINEERING DIVISION

COLEMAN A. YOUNG MUNICIPAL CENTER
2 WOODWARD AVE. SUITE 601
DETROIT, MICHIGAN 48226
PHONE: (313) 224-3949 TTY: 711
WWW.DETROITMI.GOV

MAP-25-3

CATHEDRAL AVE. 150 FT. WD.



 - REQUEST OUTRIGHT VACATION

(FOR OFFICE USE ONLY)

CARTO 100 D

B					
A					
DESIGNED BY	AP	REVIEWED	LC / TS	DATE	01-14-2025
DATE	01-14-2025	APPROVED	GE		

REQUEST TO OUTRIGHT VACATE
ROSEMONT AVE. 60 FT. WD.
BETWEEN CATHEDRAL AVE. AND DOVER ST.

CITY OF DETROIT	
CITY ENGINEERING DIVISION	
SURVEY BUREAU	
JOB NO.	25-3
DRWG. NO.	