



**CITY OF DETROIT  
DEPARTMENT OF PUBLIC WORKS  
CITY ENGINEERING DIVISION**

**COLEMAN A. YOUNG MUNICIPAL CENTER  
2 WOODWARD AVE. SUITE 601  
DETROIT, MICHIGAN 48226  
PHONE: (313) 224-3949 TTY: 711  
WWW.DETROITMI.GOV**

---

To: Clerk's Office  
From: The Department of Public Works  
City Engineering Division  
MapsandRecordsBureau@DetroitMI.Gov  
(313) 224-3970

Petitioner:  
EW Grobbel  
2500 Orleans  
Detroit, MI 48207

On behalf of the above-mentioned petitioner the Department of Public Works: City Engineering Division is submitting a petition request for the below mentioned action. The petitioner has received a project consultation from the Department of Public Works: City Engineering Division and has been advised the following:

Type of action recommended:

Petition to request encroachment within the northerly part of Adelaide St., 50 ft. wide, adjacent to the parcel commonly known as 1811 Adelaide St., for the installation of a mountable curb and two bollards.

Georgine Gersdorff  
Manager II  
Department of Public Works  
City Engineering Division  
313-224-3985



CITY OF DETROIT  
DEPARTMENT OF PUBLIC WORKS  
CITY ENGINEERING DIVISION

COLEMAN A. YOUNG MUNICIPAL CENTER  
2 WOODWARD AVE. SUITE 601  
DETROIT, MICHIGAN 48226  
PHONE: (313) 224-3949 TTY: 711  
WWW.DETROITMI.GOV



PO Box 07580 • Detroit, MI 48207

April 4, 2025

City of Detroit  
Right of Way Management  
2 Woodward Ave Ste 642  
Detroit, MI 48226

To Whom it May Concern,

We are requesting approval of a non-standard sidewalk/curb configuration on Adelaide Street to allow our delivery vehicles to service our truck docks safely.

EW Grobbel has been providing high quality food products to the Detroit area since 1883. We are proudly headquartered in Eastern Market, with our central processing plant at 2500 Orleans. We have truck deliveries daily operating from our docks on Orleans and Adelaide Streets. On a busy day, we have dozens of semi-trucks arriving and departing from these docks. Navigating the narrow streets of Eastern Market is a challenge, and our drivers are trained to ensure that the path of a truck backing into the docks and pulling out is done with the highest standards of safety, to pedestrians, vehicles, and property. And, as part of our safety culture, we query visiting drivers for their abilities to navigate in the narrow streets in the Market prior to arrival. If we are not 100% confident in their abilities, we will have them drop off their trailer outside of the Market and we then pick it up with our own tractor unit and driver, making the delivery into the docks ourselves. The mandate is that all deliveries and pick-ups are done in an entirely safe and efficient manner.

One of the specific challenges has been managing city 'standard' curbs in areas across from a loading dock. Ideally curbs allow for a truck to slightly ride over the edge to properly align when arriving or departing a dock. A mountable curb lets the driver manage the maneuver without having to add torque when backing up or pulling out, making the motion safer with less time blocking traffic. Unfortunately, mountable curbs are not a standard City practice and require special approval.

Such is the case on Adelaide Street. We request that the existing mountable curb be allowed to remain as-is where shown, even though it is not a standard detail per DPW/City Engineering standards. This curb is directly across from our loading dock and is a critical area for our operations. The City has proposed steel bollards against the property line behind the sidewalk as part of a mountable curb solution, and we have no objections to this design.

We agree to maintain the sidewalk to ensure it is kept in good condition and are willing to enter into an agreement with the City for this responsibility.

We respectfully request for approval of this condition and are available to answer any questions or issues you may have.

Sincerely,

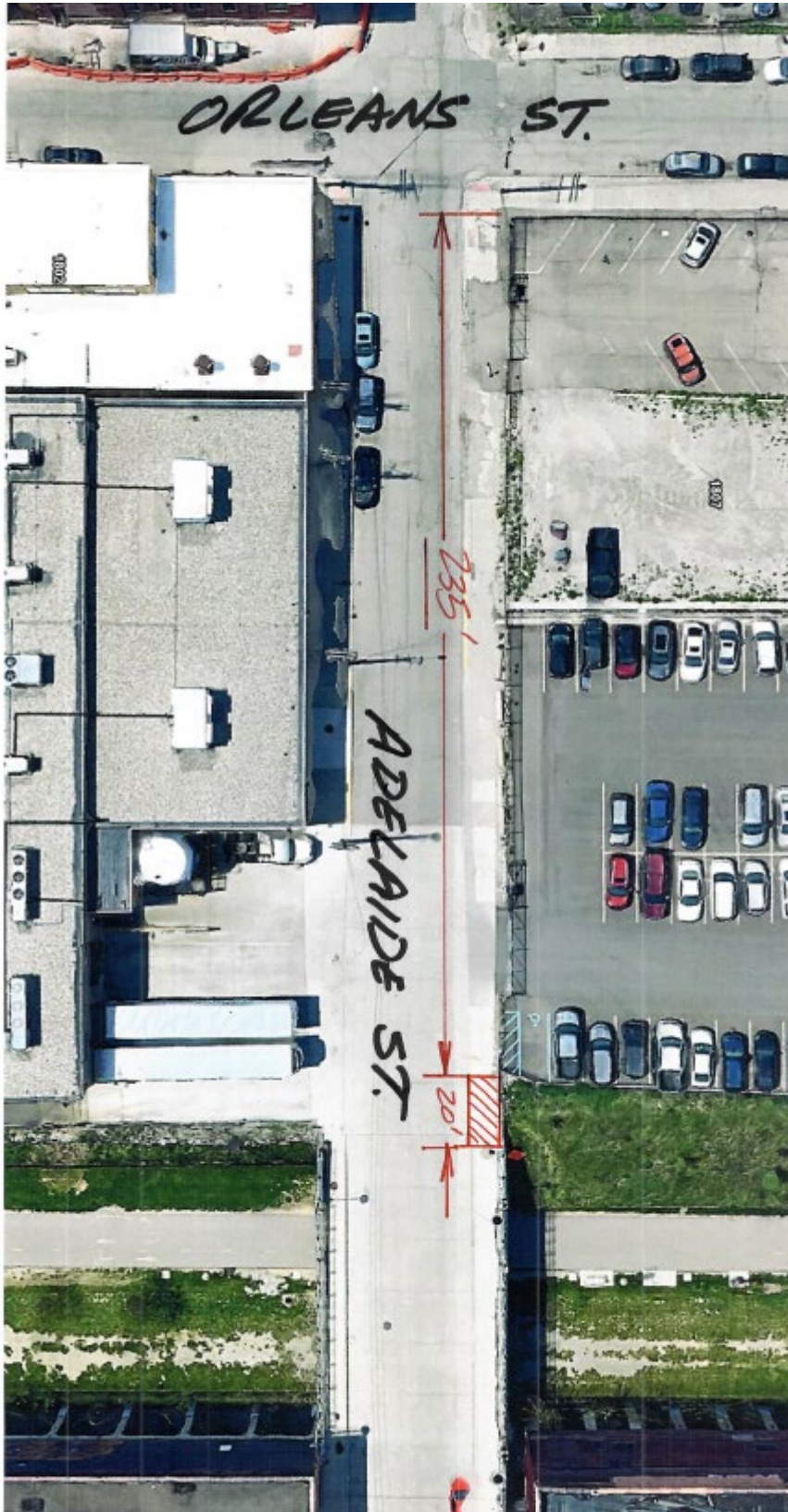
*Mike Leinweber*

Mike Leinweber  
VP Construction  
E.W. Grobbel Sons, Inc.  
(313) 567-8000  
mleinweber@grobbel.com



CITY OF DETROIT  
DEPARTMENT OF PUBLIC WORKS  
CITY ENGINEERING DIVISION

COLEMAN A. YOUNG MUNICIPAL CENTER  
2 WOODWARD AVE. SUITE 601  
DETROIT, MICHIGAN 48226  
PHONE: (313) 224-3949 TTY: 711  
WWW.DETROITMI.GOV



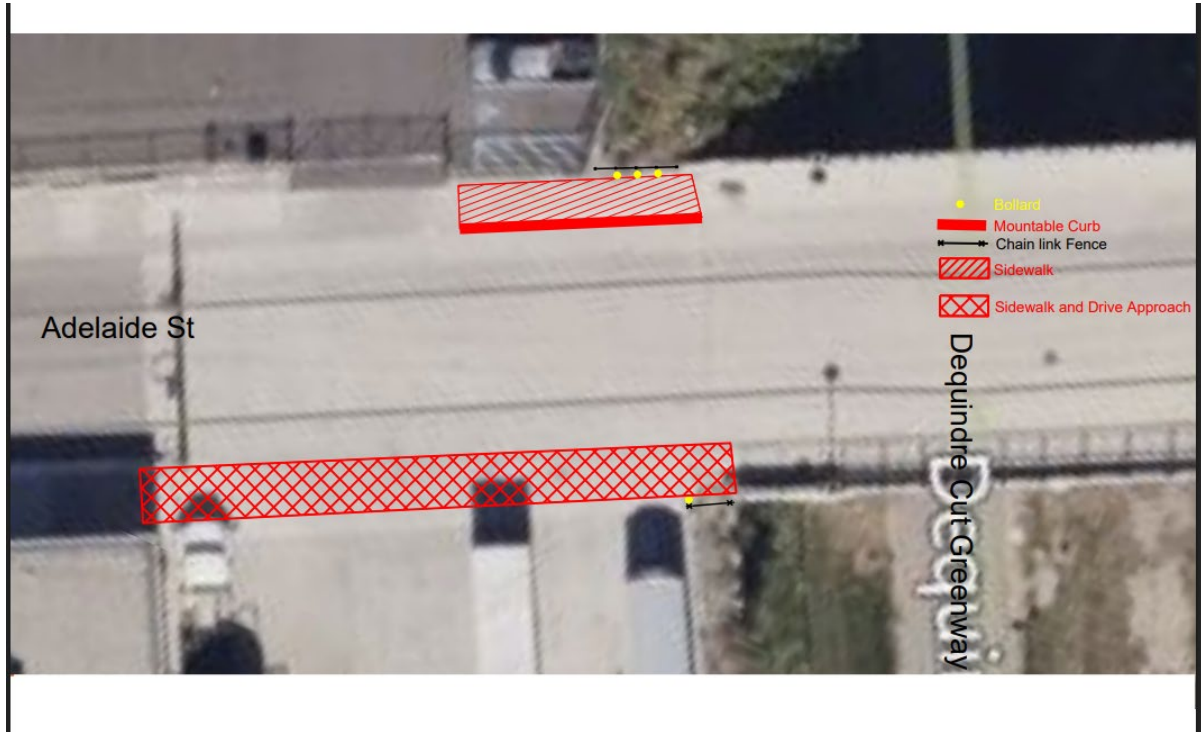
E.W. GEBBEL

4-1-25



CITY OF DETROIT  
DEPARTMENT OF PUBLIC WORKS  
CITY ENGINEERING DIVISION

COLEMAN A. YOUNG MUNICIPAL CENTER  
2 WOODWARD AVE. SUITE 601  
DETROIT, MICHIGAN 48226  
PHONE: (313) 224-3949 TTY: 711  
WWW.DETROITMI.GOV







CITY OF DETROIT  
DEPARTMENT OF PUBLIC WORKS  
CITY ENGINEERING DIVISION

COLEMAN A. YOUNG MUNICIPAL CENTER  
2 WOODWARD AVE. SUITE 601  
DETROIT, MICHIGAN 48226  
PHONE: (313) 224-3949 TTY: 711  
WWW.DETROITMI.GOV

MAP-25-36

ORLEANS ST. 50 FT. WD.

DEQUINDRE CUT GREENWAY (FMRLY GRAND TRUNK R.R.)

DEDICATED ALLEY  
10/21/1868  
JCC PG 268

VACATED ALLEY  
2/26/1946  
JCC PG 406

VACATED ALLEY  
10/31/1938  
JCC PG 2565

43

45

47

235'

ADELAIDE ST. 50 FT. WD.

CURB

1'

8"

20'

MOUNTABLE CURB ZONE

BOLLARD ZONE

- REQUEST ENCROACHMENT (FOR 1' BOLLARD ZONE)

- REQUEST ENCROACHMENT (FOR MOUNTABLE CURB ZONE)

(FOR OFFICE USE ONLY)

CARTO 39 D

B					
A					
DESCRIPTION	DATE	CHECKED	APPD	DATE	
REVISIONS					
DRAWN BY	LC	CHECKED	AP/TS		
DATE	04-08-2025	APPROVED	GE		

REQUEST ENCROACHMENT INTO  
ADELAIDE ST. BETWEEN  
ORLEANS ST. AND DEQUINDRE CUT GREENWAY

CITY OF DETROIT CITY ENGINEERING DIVISION SURVEY BUREAU	
JOB NO.	25-36
DRWG. NO.	