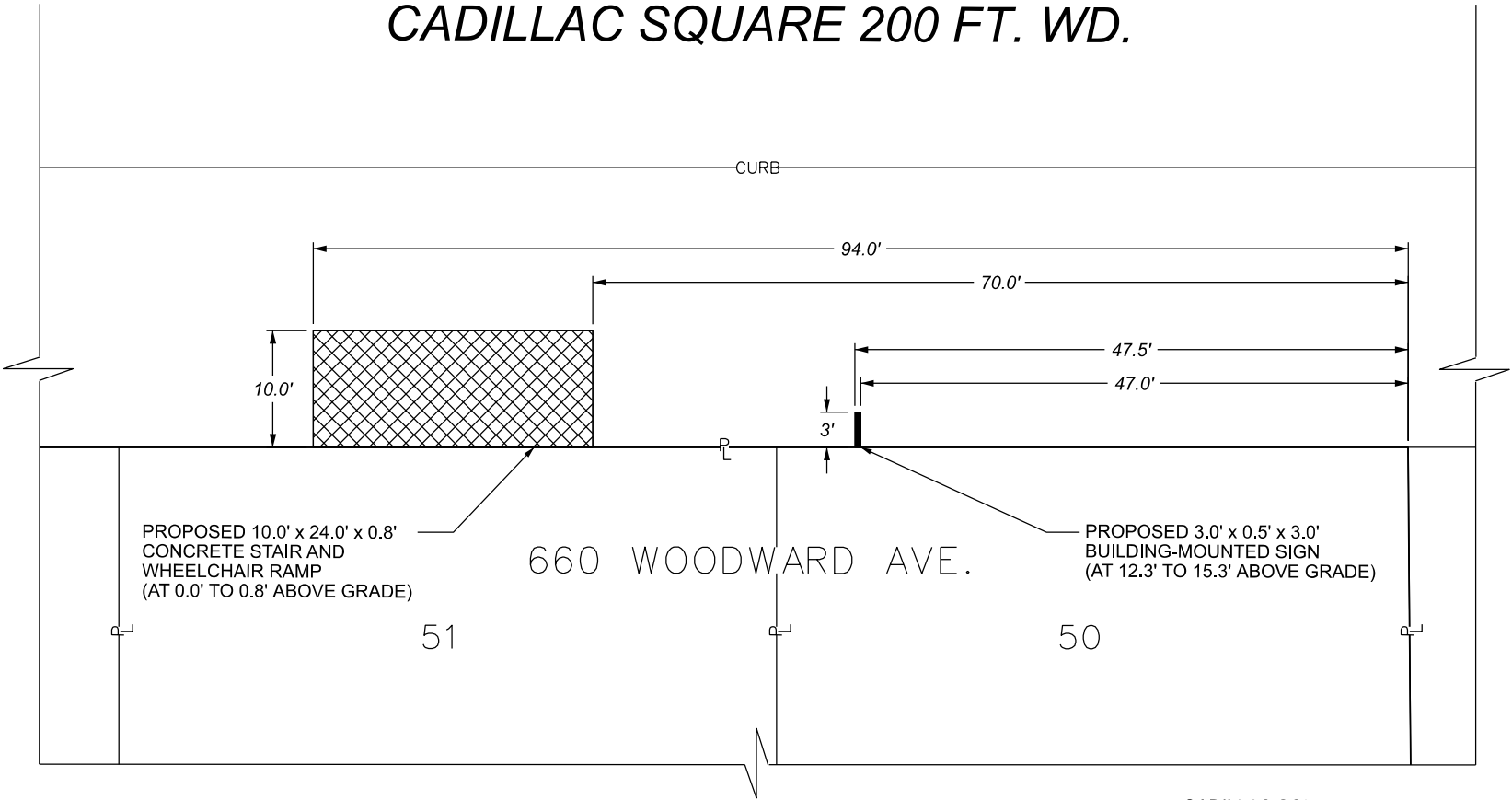


CADILLAC SQUARE 200 FT. WD.



WOODWARD AVE. 190 FT. WD.

CONGRESS ST. 60 FT. WD.



PROPOSED 10.0' x 24.0' x 0.8'
CONCRETE STAIR AND
WHEELCHAIR RAMP
(AT 0.0' TO 0.8' ABOVE GRADE)

660 WOODWARD AVE.

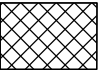
PROPOSED 3.0' x 0.5' x 3.0'
BUILDING-MOUNTED SIGN
(AT 12.3' TO 15.3' ABOVE GRADE)

51

50

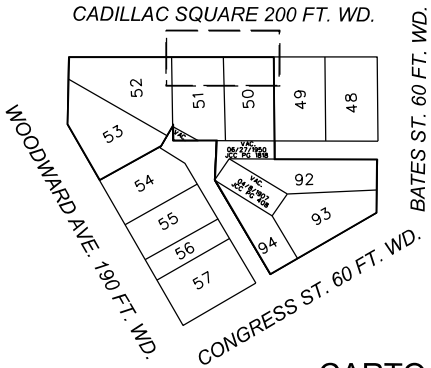


- REQUEST ENCROACHMENT
(FOR BUILDING-MOUNTED SIGN)



- REQUEST ENCROACHMENT
(FOR CONCRETE STAIR
AND WHEELCHAIR RAMP)

(FOR OFFICE USE ONLY)



CARTO 28 F

B					
A					
DESCRIPTION		DRWN	CHKD	APPD	DATE
REVISIONS					
DRAWN BY		CHECKED		AP/LC	
DATE		APPROVED		GE	
04-22-2025					

REQUEST ENCROACHMENTS INTO
CADILLAC SQUARE
AT 660 WOODWARD AVE.

CITY OF DETROIT
CITY ENGINEERING DIVISION
SURVEY BUREAU

JOB NO. 25-38

DRWG. NO.