



Central Services Facility

313-267-8000 • detroitmi.gov/DWSD

Date:

	Name	Title	Signature	Date
Reviewed by:			Mohammad Siddique	
Approved by:			Mohammad Siddique For Syed Ali	

PROVISIONS FOR ENCROACHMENT

1. By approval of this petition the Detroit Water and Sewerage Department (DWSD) does not waive any of its rights to its facilities located in the right of way, and at all time, DWSD, its agents or employees, shall have the right to enter upon the right of way to maintain, repair, alter, service, inspect, or install its facilities. All costs incident to the damaging, dismantling, demolishing, removal and replacement of structures or other improvements herein permitted and incurred in gaining access to DWSD's facilities for maintenance, repairing, alteration, servicing, or inspection by DWSD shall be borne by the petitioner. All costs associated with gaining access to DWSD's facilities, which could normally be expected had the petitioner not encroached into the right of way shall be borne by DWSD.
2. All construction performed under this petition shall not be commenced until after five (5) days written notice to DWSD. Seventy-two (72) hour notice shall also be provided in accordance with P.A. 53 1974, as amended, utilizing the MISS DIG one call system.
3. Construction under this petition is subject to inspection and approval by DWSD. The cost of such inspection shall, at the discretion of DWSD, be borne by the petitioner.
4. DWSD prohibits the use of heavy construction equipment or the storage of building material directly over or near DWSD facilities. DWSD also prohibits the use of cranes and balls or hydraulic rams for pavement removal where DWSD facilities are involved. If the water main or sewer facilities are broken or damaged as a result of any action on the part of the contractor, the contractor shall be liable for all costs incidental to the repair of such broken or damaged water main or sewer facilities. If DWSD facilities located within the street shall break or be damaged as the result of any action on the part of the petitioner, then in such event the petitioner agrees to be liable for all costs incident to the repair, replacement or relocation of such broken or damaged DWSD facilities.
5. The petitioner shall hold DWSD harmless for any damage to the encroaching device constructed or installed under this petition, which may be caused by the failure of DWSD's facilities.
6. If at any time in the future the petitioner shall request removal and / or relocation of DWSD's facilities in the street being encroached upon, the petitioner agrees to pay all costs for such removal and/or relocation.
7. Prior to construction, Easement Encroachment Permit (EEP) should be obtained and the insurance required by the EEP should not expire until after completion of the construction.
8. For any proposed work that involves DWSD water mains and/or sewers, an approval and a permit is required from DWSD before commencement of work.
9. It is DWSD's requirement that any proposed utility crossing DWSD water mains and/or sewers perpendicularly must maintain a minimum of 18 inches vertical clearance. Any proposed utility running adjacent to DWSD water mains and/or sewers must maintain a minimum of 10 feet lateral clearance including any conduit and/or manholes walls. No utility is allowed to run along the top of the water main or/or sewer.
10. It is DWSD's requirement that no encroachment has a vertical clearance of less than 16 feet from the ground surface over DWSD water mains and/or sewers.



Coleman A. Young Municipal Center
2 Woodward Avenue, Suite 526
Detroit, Michigan 48226

Phone 313•224•3765 TTY:311
Fax 313•224•1647
www.detroitmi.gov

February 13, 2025

RE: SEEKING FORMAL ENCROACHMENT APPROVAL FOR DR. OSSIAN SWEET PROJECT

This letter is being submitted along with the formal request for approval of a small park development located in the ROW at the corner of Charlevoix and Garland St. on Detroit's east side. This work is associated with the adjacent Dr. Ossian Sweet House and Dr. Ossian Sweet Memorial Plaza construction led by GSD parks division.

The project is completing design and nearing construction this coming spring. When the project kicked off in the spring of 2024 GSD met with TED and had an informal meeting (3/27/24) to understand if the encroachment seemed permissible. GSD met with representatives Ahmad Fawaz, Sonny Jacobs, and Prasad Nannapaneni, and Jay Biernat to discuss the plans. Sighting similar park ROW projects like the Grand Parklet off Gratiot Ave, TED saw no objection to the work we were proposing if the project did not create any visual barriers to vehicular traffic. Since that time, we have developed the plans accordingly and are now seeking formal approval to proceed with the work.

The property will be maintained by the General Services Department and will be supplementary to the memorial park that will be located across the street.

Thank you for your consideration and If you have any questions or concerns about the project, please contact me at 313.400.5014 or kleinj@detroitmi.gov.

Thank you,

Jeffrey Klein

Jeff Klein
Deputy Chief of Landscape Architecture
General Services Department
City of Detroit

2912 GARLAND ST



3/5/2025

Transmission System Mains - GLWA

Active Water Main

Transmission System Valves - GLWA



Blowoff



Cone



Gate



Manual Air



Tapping Sleeve



Distribution System Hydrant

Distribution System Main

Active



Wastewater Catch Basin



Wastewater Manhole



Wastewater Chamber

Wastewater Fitting



Bend/Slope Change



Blind Connection



Material/Size Change



Crown/Main Point

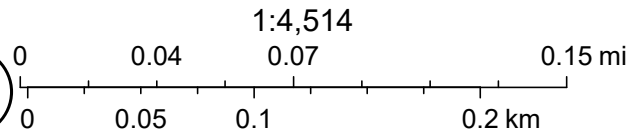
Wastewater Lamp Hole

Wastewater GravityMain

Active

Abandoned/Inactive/Retired

Wastewater Regulator



DWSD, Sources: Esri, TomTom, Garmin, FAO, NOAA, USGS, © OpenStreetMap contributors, and the GIS User Community

2912 GARLAND ST

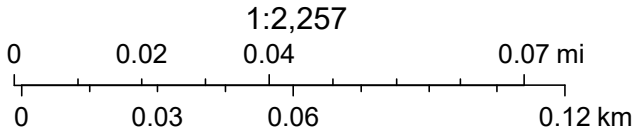


3/5/2025, 8:26:57 AM

Wastewater GravityMain

- Active
- Abandoned/Inactive/Retired
- DWSD Wastewater Flow Direction

- Wastewater Lamp Hole
- Wastewater Fitting
- Bend/Slope Change
- Blind Connection
- Crown/Main Point
- Wastewater Manhole
- Wastewater Catch Basin



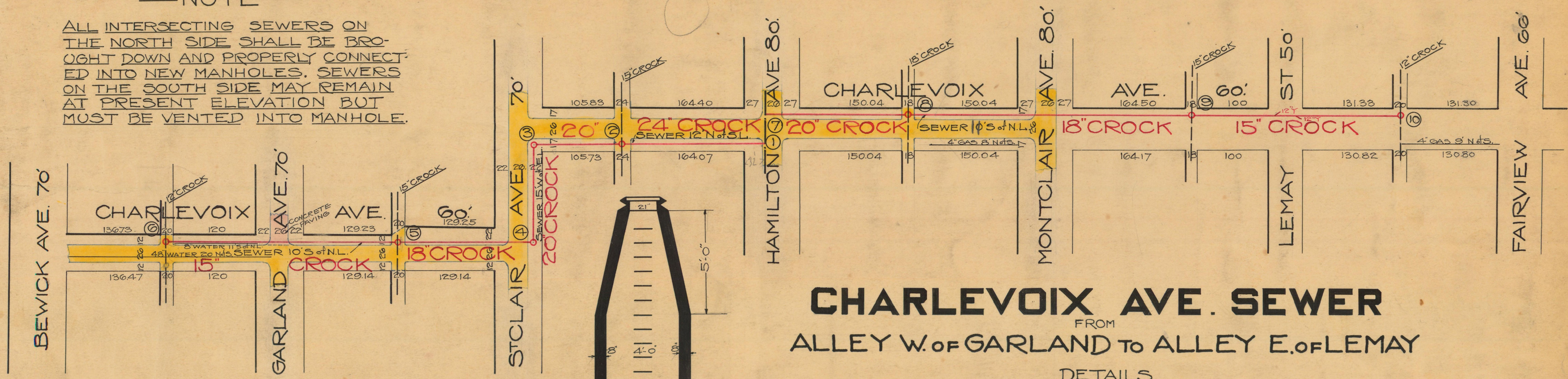
Sources: Esri, TomTom, Garmin, FAO, NOAA, USGS, © OpenStreetMap contributors, and the GIS User Community, Maxar

1915

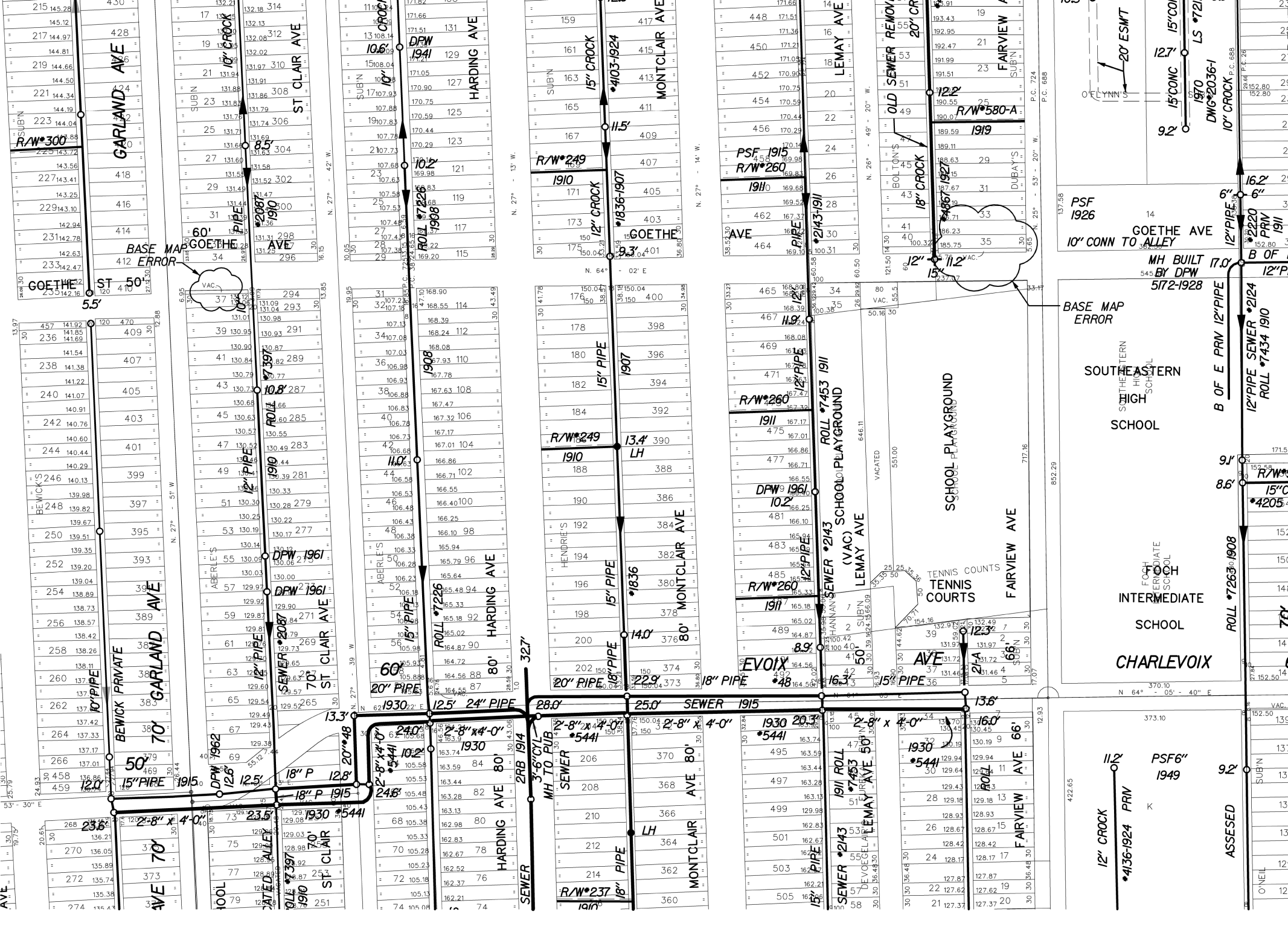
48

—NOTE—

ALL INTERSECTING SEWERS ON THE NORTH SIDE SHALL BE BROUGHT DOWN AND PROPERLY CONNECTED INTO NEW MANHOLES. SEWERS ON THE SOUTH SIDE MAY REMAIN AT PRESENT ELEVATION BUT MUST BE VENTED INTO MANHOLE.

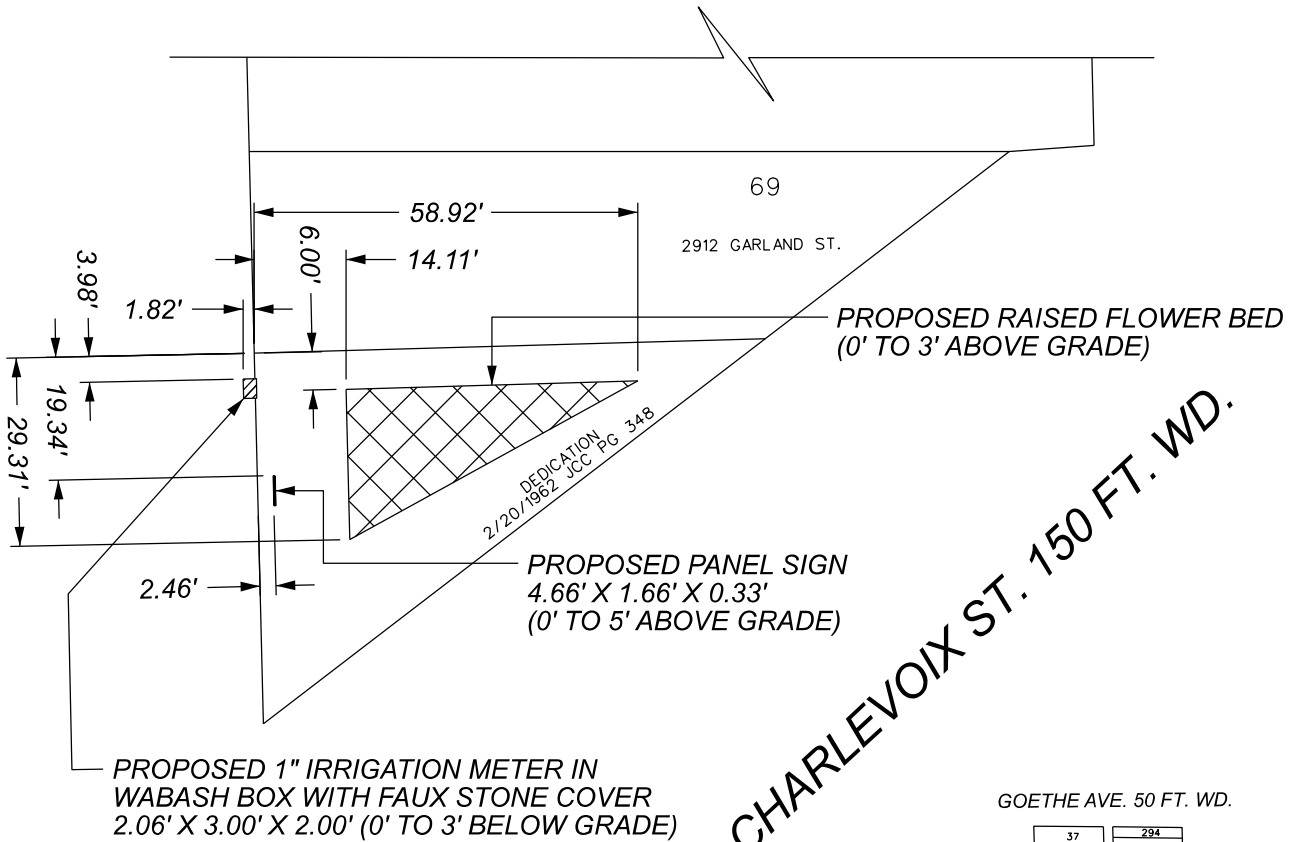








GARLAND ST. 70 FT. WD.



CHARLEVOIX ST. 150 FT. WD.

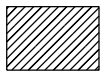
GOETHE AVE. 50 FT. WD.

37	294
39	293
41	291
43	289
45	287
47	285
49	283
51	281
53	279
55	277
57	275
59	273
61	271
63	269
65	267
67	265
69	

GARLAND ST. 70 FT. WD.

ST. CLAIR ST. 70 FT. WD.

CHARLEVOIX ST. 150 FT. WD.



- REQUEST ENCROACHMENT
(For New Wabash Box and Irrigation Meter)



- REQUEST ENCROACHMENT
(For New Panel Sign)



- REQUEST ENCROACHMENT
(For New Raised Flower Bed)

(FOR OFFICE USE ONLY)

CARTO 55 B

B					
A					
DESCRIPTION	DRWN	CHKD	APPD	DATE	
REVISIONS					
DRAWN BY	AP	CHECKED	LC / TS		
DATE	02-28-2025	APPROVED	GE		

REQUEST ENCROACHMENT
INTO CHARLEVOIX ST.
AT 2912 GARLAND ST.

CITY OF DETROIT
ENGINEERING DIVISION
SURVEY BUREAU

JOB NO. 25-11

DRWG.NO.

S:\PROJECTS\2024\24-1323_OSSIAN_SWEET_DETROIT\DWG\CONSTRUCTION\CONSTRUCTION\24-1323.dwg PLOT DATE: 2/27/2025 BY: PHL/BWA



LEGEND:

	CONCRETE PAVEMENT
	ASPHALT PAVEMENT
	GRAVEL
	WETLAND
	CONCRETE CURB AND GUTTER
	REVERSE GUTTER PAN
	SETBACK LINE
	SIGN LIGHTPOLE FENCE GUARD RAIL

GENERAL NOTES:

THESE NOTES APPLY TO ALL CONSTRUCTION ACTIVITIES ON THIS PROJECT.

- ALL DIMENSIONS SHOWN ARE TO BACK OF CURB, FACE OF SIDEWALK, OUTSIDE FACE OF BUILDING, PROPERTY LINE, CENTER OF MANHOLE/CATCH BASIN OR CENTERLINE OF PIPE UNLESS OTHERWISE NOTED.
- REFER TO NOTES & DETAILS SHEET FOR ON-SITE PAVING DETAILS.
- REFER TO NOTES & DETAILS SHEET FOR ON-SITE SIDEWALK RAMP DETAILS.

DWSD STORMWATER NOTE:

PROPOSED IMPERVIOUS AREA DOES NOT EXCEED 1/2 ACRE. STORMWATER ORDINANCE REQUIREMENTS FOR TREATMENT INFILTRATION AND DETENTION DO NOT APPLY TO THIS PROJECT.

t: 844.813.2949
www.peagroup.com

NORTH

0 5 10 20
SCALE: 1" = 10'

811 Know what's below.
Call before you dig.

CAUTION!!
THE LOCATIONS AND ELEVATIONS OF EXISTING UNDERGROUND UTILITIES AS SHOWN ON THIS DRAWING ARE ONLY APPROXIMATE. NO GUARANTEE IS EITHER EXPRESSED OR IMPLIED AS TO THE COMPLETENESS OR ACCURACY THEREOF. THE CONTRACTOR SHALL BE EXCLUSIVELY RESPONSIBLE FOR DETERMINING THE EXACT UTILITY LOCATIONS AND ELEVATIONS PRIOR TO THE START OF CONSTRUCTION.

CLIENT
WCI CONTRACTORS, INC.
20210 CONNER STREET
DETROIT, MI

PROJECT TITLE
OSSIAN SWEET DETROIT
2905 GARLAND STREET
DETROIT, MI

REVISIONS	
ROW REVISIONS	02/27/25

ORIGINAL ISSUE DATE:
FEBRUARY 2, 2025

DRAWING TITLE
DIMENSION PLAN

PEA JOB NO.	24-1323
P.M.	EB
DN.	CR
DES.	RW

DRAWING NUMBER:
C-RW

**MEMORIAL
PARK SITE**

CEMENT

GRASS

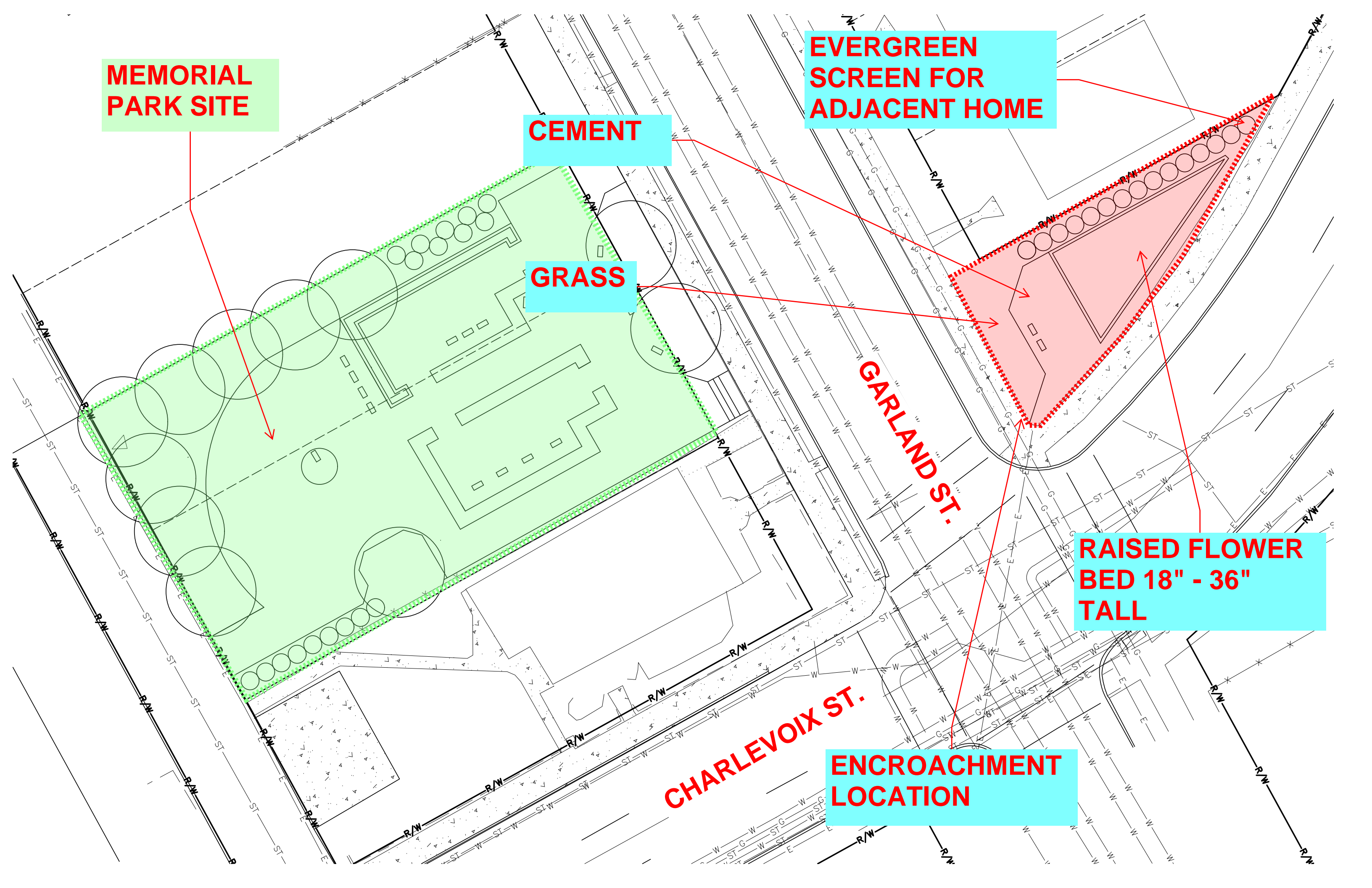
**EVERGREEN
SCREEN FOR
ADJACENT HOME**

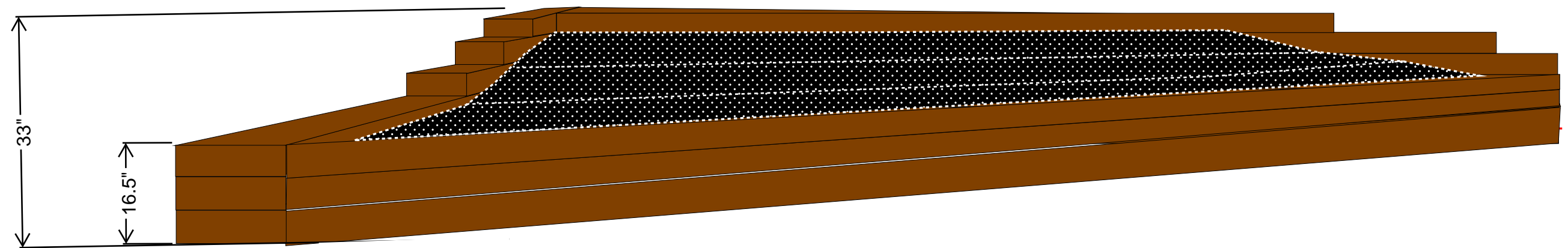
GARLAND ST.

**RAISED FLOWER
BED 18" - 36"
TALL**

CHARLEVOIX ST.

**ENCROACHMENT
LOCATION**





ROW RAISED BED ELEVATION

PROJECT TITLE

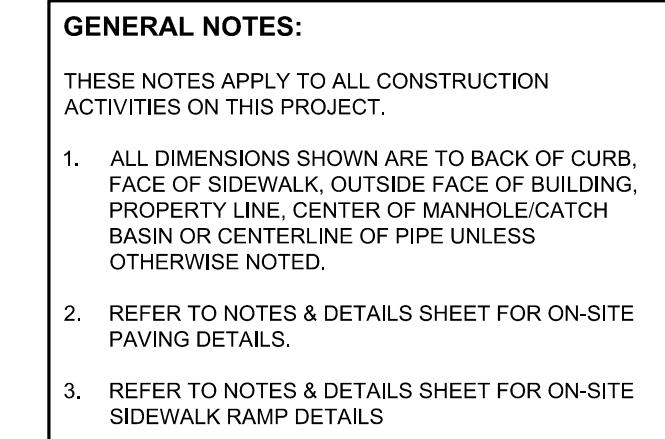
OSSIAN SWEET
DETROIT

2905 GARLAND STREET
DETROIT, MI

ORIGINAL ISSUE DATE:
FEBRUARY 2, 2025

PEA JOB NO.	24-1323
P.M.	EB
DN.	CR
DES.	RW

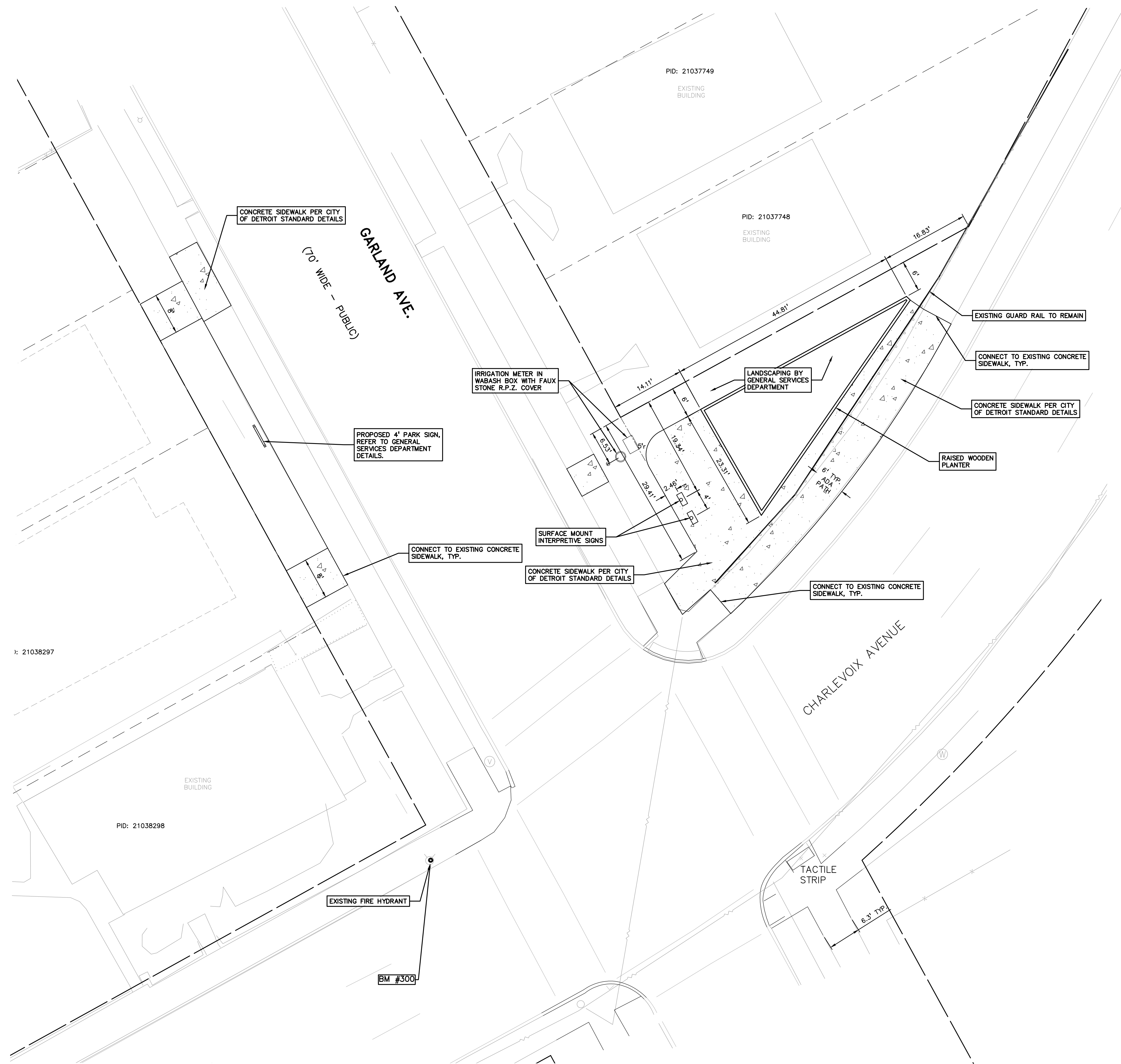
C-ROW

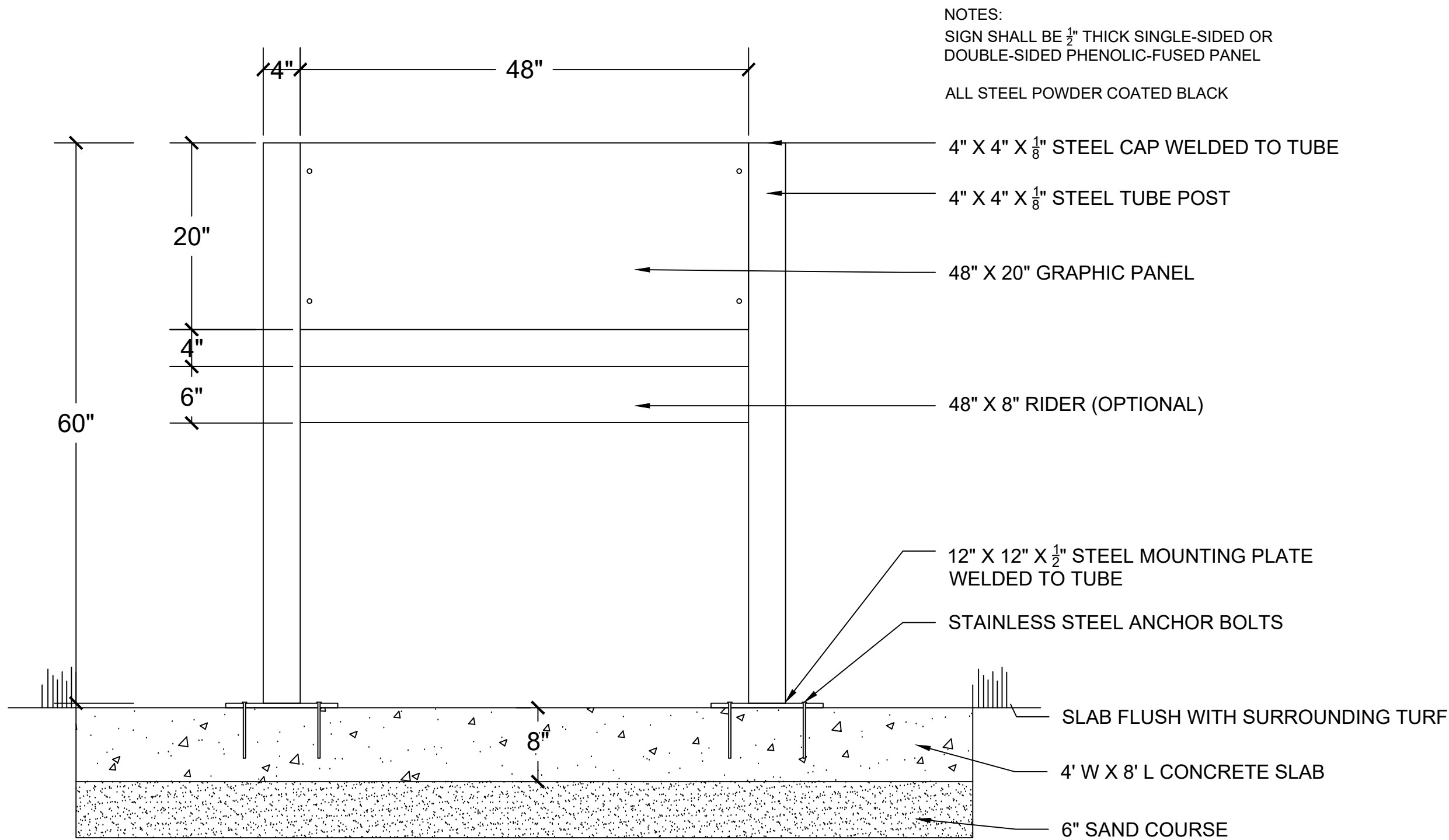


DWSD STORMWATER NOTE:

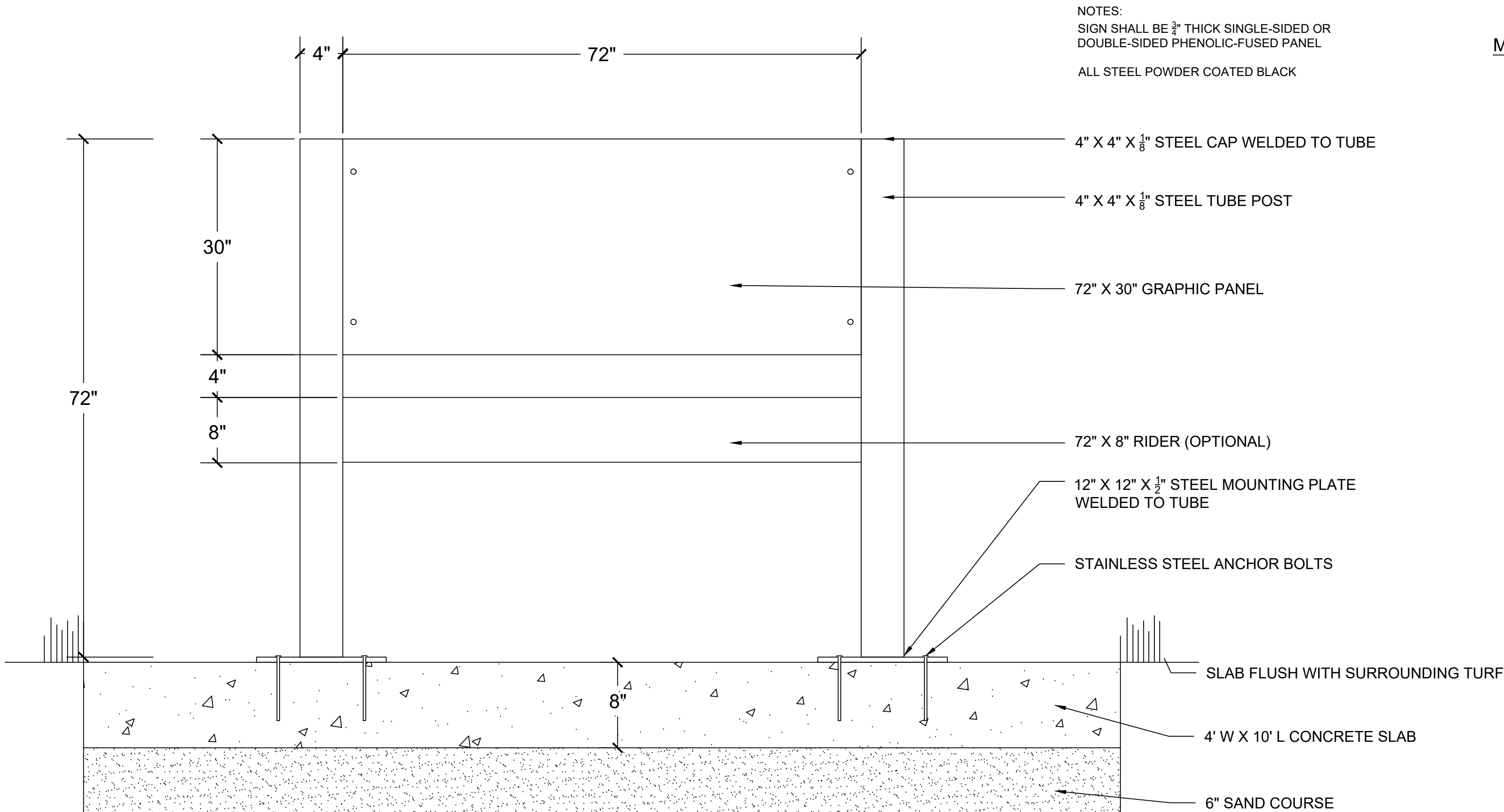
PROPOSED IMPERVIOUS AREA DOES NOT EXCEED 1/2 ACRE. STORMWATER ORDINANCE REQUIREMENTS FOR TREATMENT INFILTRATION AND DETENTION DO NOT APPLY TO THIS PROJECT.

CAUTION!!
THE LOCATIONS AND ELEVATIONS OF EXISTING UNDERGROUND UTILITIES AS SHOWN ON THIS DRAWING ARE ONLY APPROXIMATE. NO GUARANTEE IS EITHER EXPRESSED OR IMPLIED AS TO THE COMPLETENESS OR ACCURACY THEREOF. THE CONTRACTOR SHALL BE EXCLUSIVELY RESPONSIBLE FOR DETERMINING THE EXACT UTILITY LOCATIONS AND ELEVATIONS PRIOR TO THE START OF CONSTRUCTION.



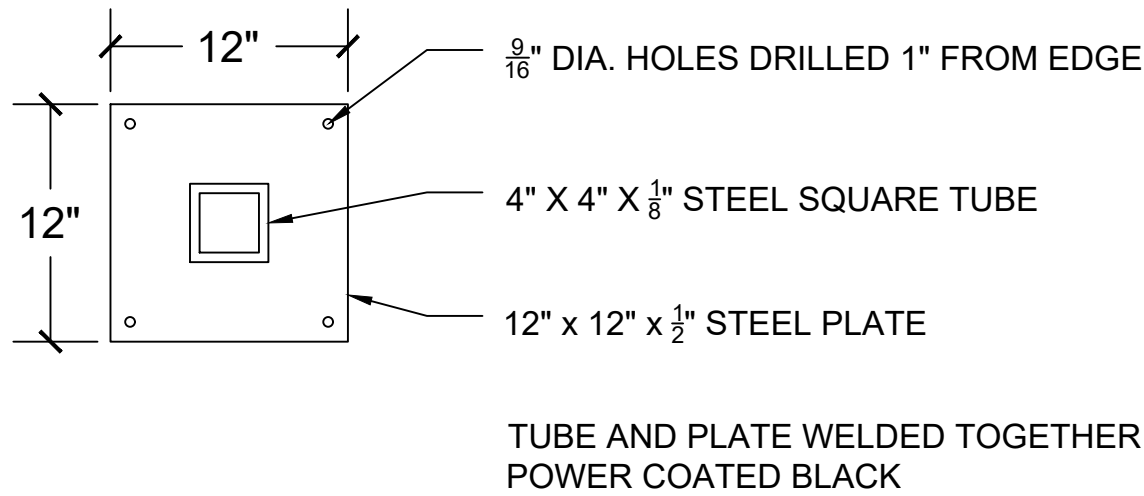


1 4' PARK SIGN INSTALLATION
L5.21 NOT TO SCALE

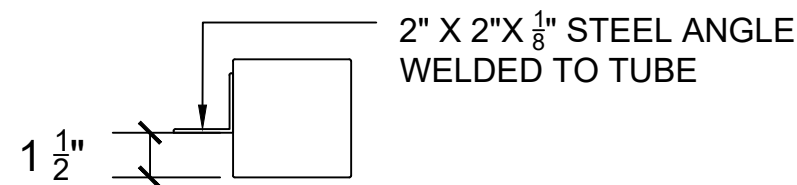


2 6' PARK SIGN INSTALLATION
L5.21 NOT TO SCALE

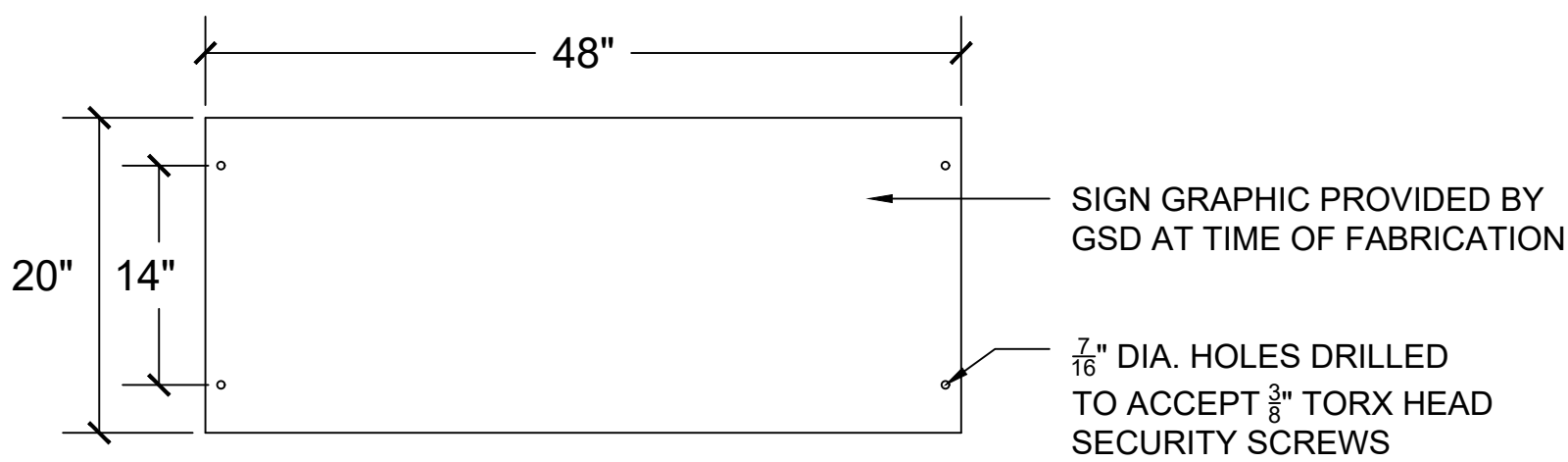
MOUNTING PLATE DETAIL



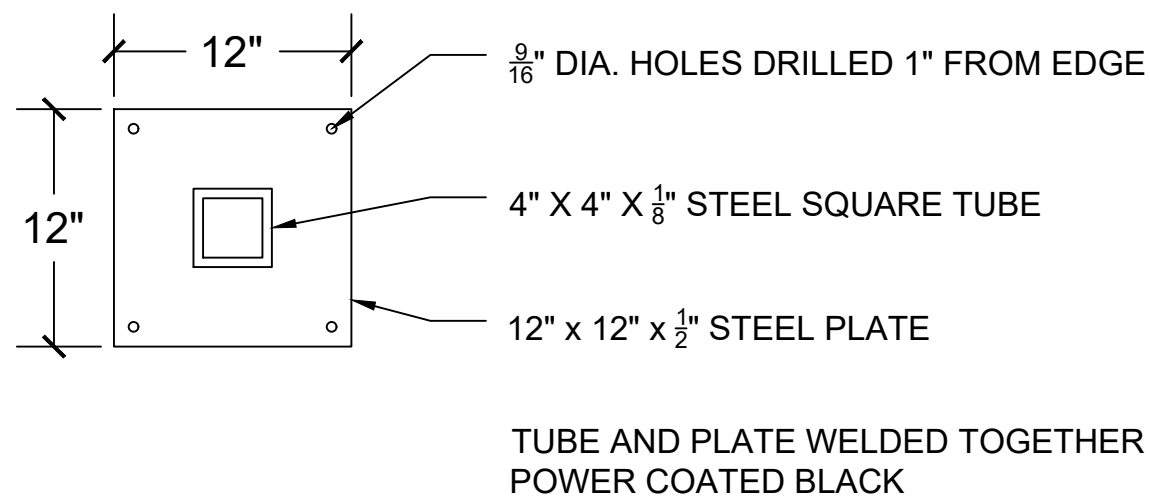
TOP VIEW - MOUNTING BRACKET



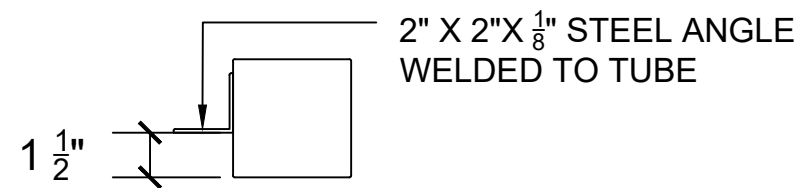
FRONT OF SIGN PANEL DETAIL



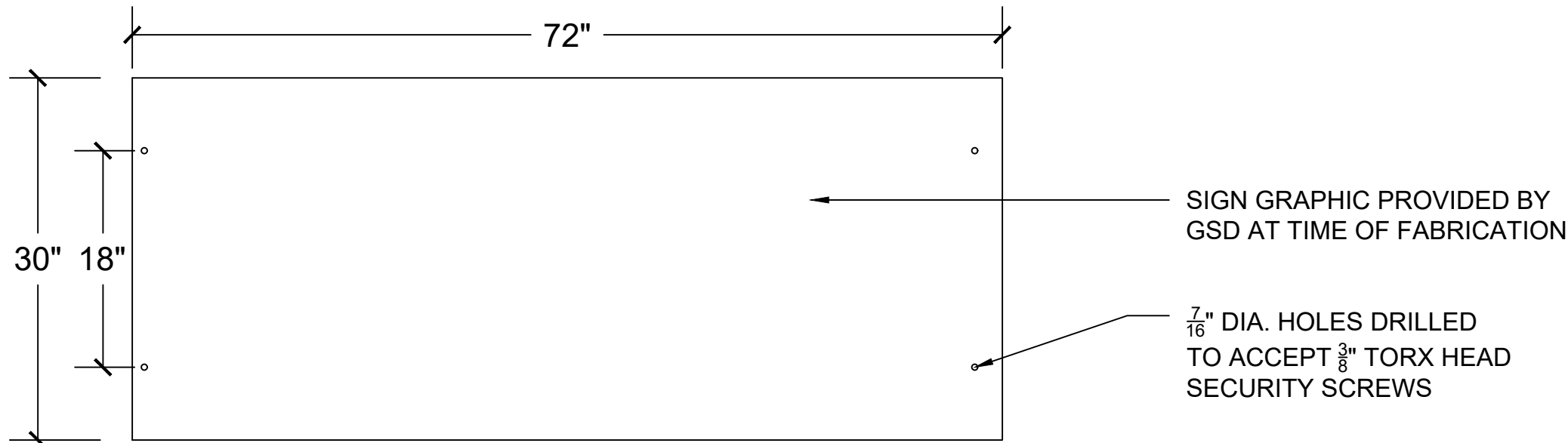
MOUNTING PLATE DETAIL



TOP VIEW - MOUNTING BRACKET



FRONT OF SIGN PANEL DETAIL



GENERAL SERVICES DEPARTMENT
LANDSCAPE DESIGN UNIT
18100 MEYERS RD, DETROIT MI 48235
PH: (313) 628-0900 FAX:(313) 628-0927

1. DO NOT SCALE OFF THE DRAWINGS, DETAILS ARE NOT TO SCALE.

2. CHECK ALL MANUFACTURER'S SPECIFICATIONS AND DRAWINGS FOR FURTHER DETAILED INFORMATION.

3. CONTRACTOR TO SUPPLY AND APPLY LOCK TIGHT OR OTHER APPROVED THEFT DETERRENT PRODUCT TO ALL SITE AMENITIES WHERE APPLICABLE.

4. ALL BOLTS SHALL BE CUT OR SAWED SO THERE IS A MAXIMUM OF 3 THREADS VISIBLE.

5. IF NOT SUPPLIED BY THE MANUFACTURER ALL HARDWARE SHALL BE PURCHASED AND INSTALLED (STAINLESS STEEL) BY THE CONTRACTOR.

6. ALL SITE AMENITIES SHALL BE LAYED OUT AND APPROVED BY THE CITY REPRESENTATIVE PRIOR TO INSTALLATION.

7. ALL SUBGRADES SHALL BE COMPACTED TO 95%.

8. CALL MISS DIG 72 HOURS (3 WORKING DAYS) PRIOR TO ANY CONSTRUCTION OR EXCAVATION TO MARK ALL UTILITIES. (800) 482-7171

PROJECT NAME:

PROJECT NAME

DRAWN:	APPROVED:
CHECKED:	SCALE:
ISSUED FOR	DATE
	1/15/2020

SHEET TITLE:

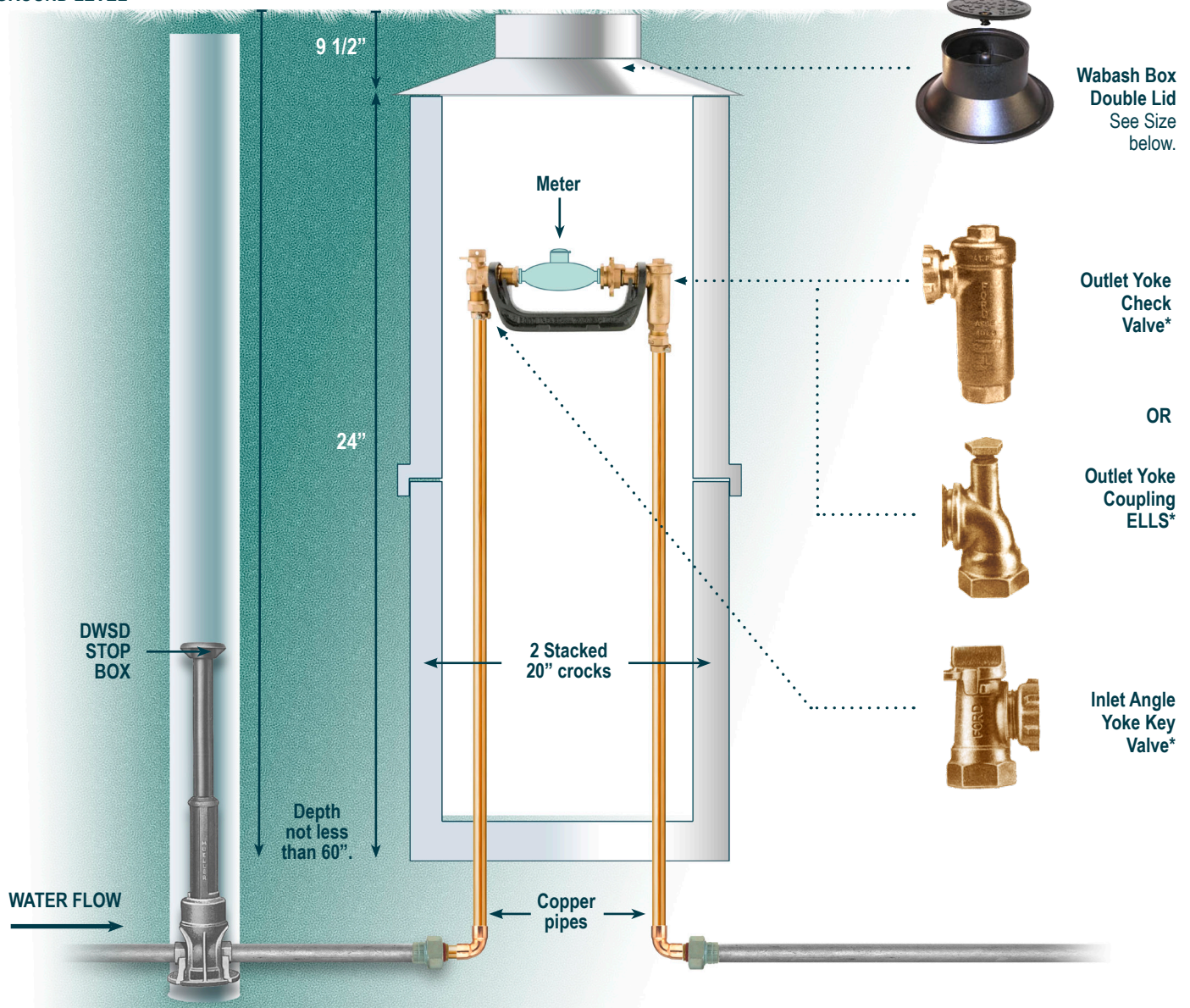
PARK SIGN
DETAILS

FOR FILE PROJ #: PROP #: XXX DIST #: X	SHEET L5.21
---	----------------

DOUBLE-CHECK VALVE BACK-FLOW PREVENTION DEVICE

Whenever a residence has a secondary water supply, a double-check valve or other back-flow prevention devices meeting the approval of the Detroit Health Department will be required to be installed within 180 inches of the premises or where provisions are made for a Fire Department pumper supply to premises.

GROUND LEVEL



WABASH BOX

METER	METER	VALVES	COUPLINGS
5/8 INCH	7 1/2 INCHES	3/4 INCH	3/4 INCH
3/4 INCH	9 INCHES	1 INCH	1 INCH
1 INCH	10 3/4 INCHES	1 1/4 INCHES	1 1/4 INCHES

The depth of the service line shall be installed below the lowest frost line. The heat generated from the soil at the base of the meter pit will circulate warm air and keep the service from freezing during winter.

*National Pipe Thread (NPT)

Please contact our Customer Care Center for questions or to schedule an appointment at **313-267-8000**.



DETROIT
**Water & Sewerage
Department**