



**CITY OF DETROIT
DEPARTMENT OF PUBLIC WORKS
CITY ENGINEERING DIVISION**

**COLEMAN A. YOUNG MUNICIPAL CENTER
2 WOODWARD AVE. SUITE 601
DETROIT, MICHIGAN 48226
PHONE: (313) 224-3949 TTY: 711
WWW.DETROITMI.GOV**

To: Clerk's Office
From: The Department of Public Works
City Engineering Division
MapsandRecordsBureau@DetroitMI.Gov
(313) 224-3970

Petitioner:
Detroit Doghouse Islandview, LLC
2238 Mt. Elliott Ave.
Detroit, MI 48207

On behalf of the above-mentioned petitioner the Department of Public Works: City Engineering Division is submitting a petition request for the below mentioned action. The petitioner has received a project consultation from the Department of Public Works: City Engineering Division and has been advised the following:

Type of action recommended:

Petition to request encroachment within the southerly part of Waterloo Ave., adjacent to the parcel commonly known as 2238 Mt. Elliott Ave., for two existing window wells.

Georgine Gersdorff
Manager II
Department of Public Works
City Engineering Division
313-224-3985



CITY OF DETROIT
DEPARTMENT OF PUBLIC WORKS
CITY ENGINEERING DIVISION

COLEMAN A. YOUNG MUNICIPAL CENTER
2 WOODWARD AVE. SUITE 601
DETROIT, MICHIGAN 48226
PHONE: (313) 224-3949 TTY: 711
WWW.DETROITMI.GOV

MSA Construction

BP2024-02607
2238 Mt Elliott

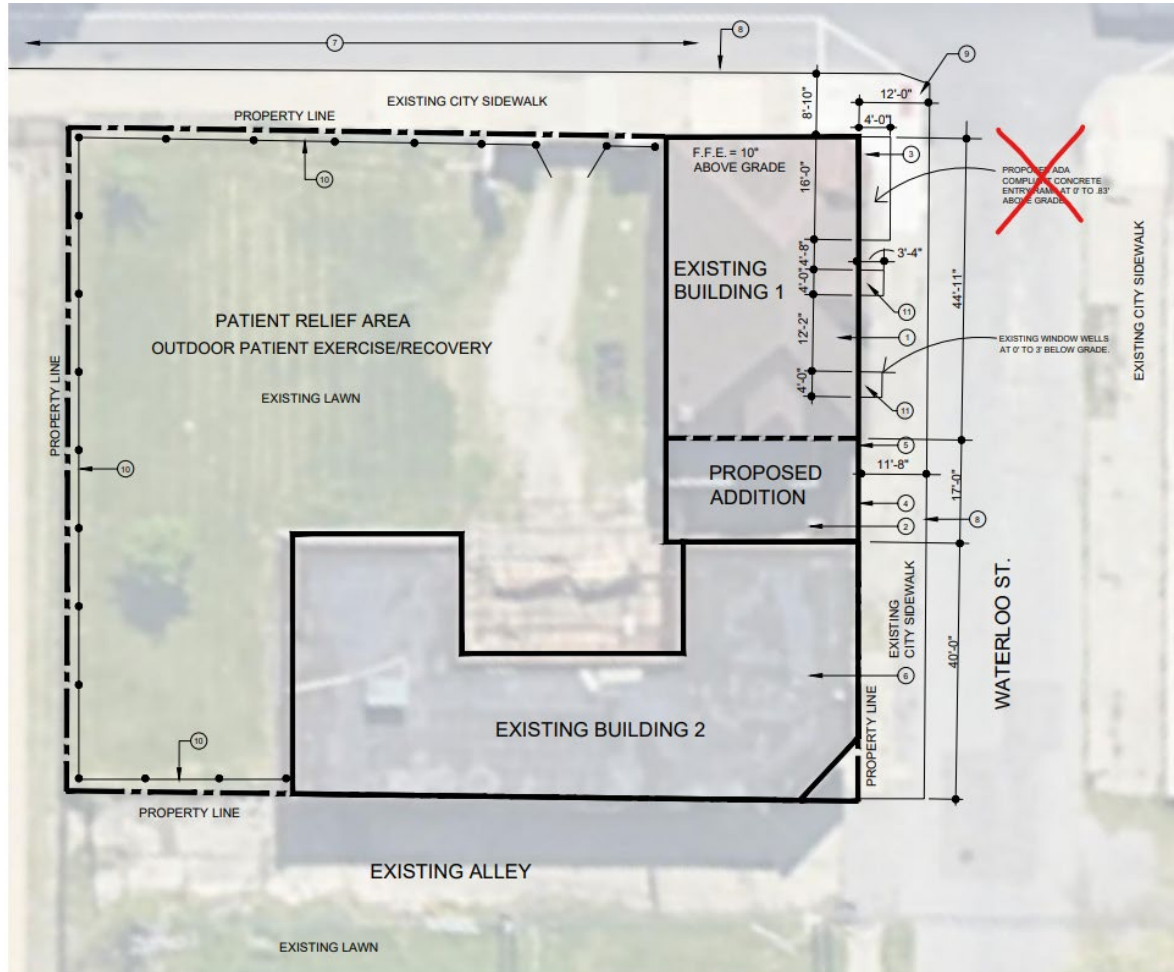
Description for Right-of-way approval

~~Add ADA entrance ramp on Waterloo.~~
Request variance for (2) existing window wells on Waterloo.

Owner
Julia Filipiak
2144 Montclair
Detroit MI 48214
517-673-2019
detroitanimalhospital@gmail.com

Architect
Wayne Dutton
45650 Grand River
Novi MI 48374
248-349-4500
wddutton@sidockgroup.com

Builder
Mark Affer
MSA Construction
4248 Delemere Ct
Royal Oak MI 48073
586-709-4853
msaconstructionbuilds@gmail.com





CITY OF DETROIT
DEPARTMENT OF PUBLIC WORKS
CITY ENGINEERING DIVISION

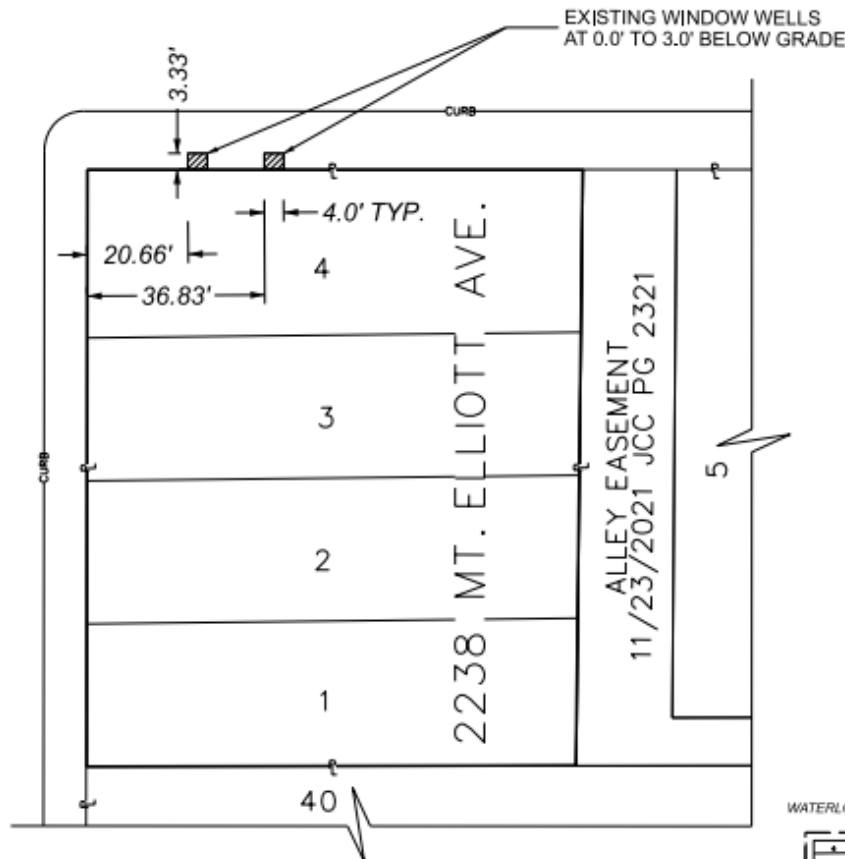
COLEMAN A. YOUNG MUNICIPAL CENTER
2 WOODWARD AVE. SUITE 601
DETROIT, MICHIGAN 48226
PHONE: (313) 224-3949 TTY: 711
WWW.DETROITMI.GOV

MAP-25-18

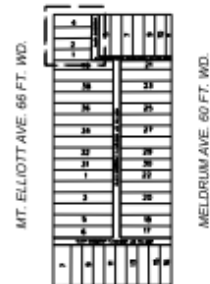
WATERLOO AVE. 50 FT. WD.



MT. ELLIOTT AVE. 66 FT. WD.



WATERLOO AVE. 50 FT. WD.



KERCHEVAL AVE. 80 FT. WD.



- REQUEST ENCROACHMENT
(FOR EXISTING WINDOW WELLS,
0.0' TO 3.0' BELOW GRADE)

(FOR OFFICE USE ONLY)

CARTO 47 D

B					
A					
REVISIONS					
DESCRIPTION	REV	CHKD	APPR	DATE	
DRAWN BY	TS	CHECKED	LC/AP		
DATE	04-29-2025	APPROVED	GE		

REQUEST ENCROACHMENT
INTO THE SOUTHERLY PART
OF WATERLOO AVE.
AT 2238 MT. ELLIOTT AVE.

CITY OF DETROIT
CITY ENGINEERING DIVISION
SURVEY BUREAU

JOB NO. 25-18

DRWG. NO.