



**CITY OF DETROIT
DEPARTMENT OF PUBLIC WORKS
CITY ENGINEERING DIVISION**

**COLEMAN A. YOUNG MUNICIPAL CENTER
2 WOODWARD AVE. SUITE 601
DETROIT, MICHIGAN 48226
PHONE: (313) 224-3949 TTY: 711
WWW.DETROITMI.GOV**

To: Clerk's Office
From: The Department of Public Works
City Engineering Division
MapsandRecordsBureau@DetroitMI.Gov
(313) 224-3970

Petitioner:
Arab American & Chaldean Council
28551 Southfield Road
Lathrup Village, MI 48076

On behalf of the above-mentioned petitioner the Department of Public Works: City Engineering Division is submitting a petition request for the below mentioned action. The petitioner has received a project consultation from the Department of Public Works: City Engineering Division and has been advised the following:

Type of action recommended:

Petition to request encroachment within the northerly part of W. Seven Mile, adjacent to the parcel commonly known as 106-110 W. Seven Mile Road, for the installation of a building-mounted blade sign.

Georgine Gersdorff
Manager II
Department of Public Works
City Engineering Division
313-224-3985



CITY OF DETROIT
DEPARTMENT OF PUBLIC WORKS
CITY ENGINEERING DIVISION

COLEMAN A. YOUNG MUNICIPAL CENTER
2 WOODWARD AVE. SUITE 601
DETROIT, MICHIGAN 48226
PHONE: (313) 224-3949 TTY: 711
WWW.DETROITMI.GOV

phillips SIGN & LIGHTING INC.

40920 Executive Drive, Harrison Township, MI 48045
Phone: 586.468.7110 Fax: 586.468.7441 www.phillipssign.com

March 19, 2025

RE: 110 W. Seven Mile Rd
America's Community Council Marketplace

Encroachment

We have been instructed to apply for an encroachment permit to install a 6 square foot projecting sign on the southeast building elevation.

Detailed drawings containing dimensional information as well as a site plan will be uploaded in the application portal.

If anything else is needed, please contact myself or Janet at 586-468-7110.

Sincerely,

Steven M. Beauvais
General Manager
Phillips Sign & Lighting
40920 Executive Drive
Harrison Township, MI 48045

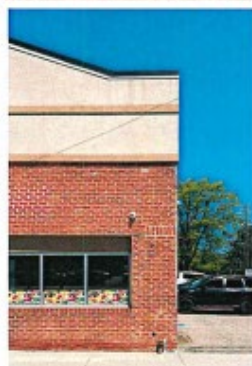
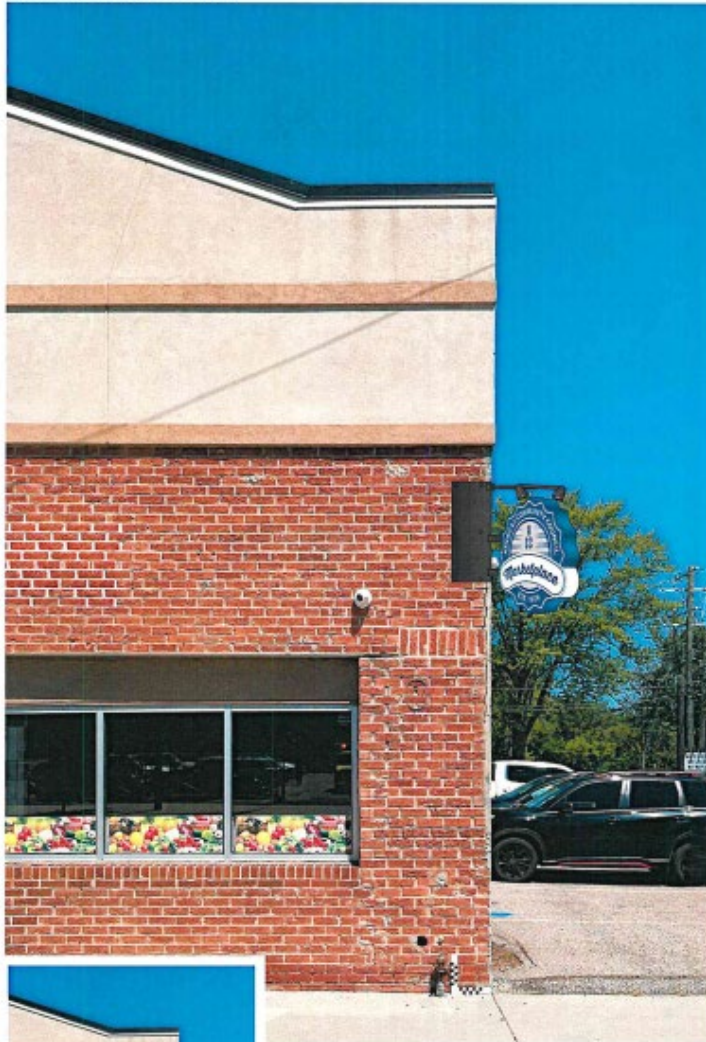


CITY OF DETROIT
DEPARTMENT OF PUBLIC WORKS
CITY ENGINEERING DIVISION

COLEMAN A. YOUNG MUNICIPAL CENTER
2 WOODWARD AVE. SUITE 601
DETROIT, MICHIGAN 48226
PHONE: (313) 224-3949 TTY: 711
WWW.DETROITMI.GOV

SOUTHEAST ELEVATION

Simulated Elevation View



Existing at Site

Item #3-R2

TOTAL SIGN AREA: 6 Sq. Ft.

Projecting Sign
Qty: (1) Double sided

Lead #: P21004359-44834

MOUNT: ACC Marketplace

FILE: 44834-Permit

SITE ADDRESS: 110 W. 7 Mile Rd.,
Detroit, MI

LEAD: SM

REVISION:

KP-9-30-24

LAYOUT: KP

KP-10-24-24

Date:

9-19-24

Design, details and plans represented herein are the sole property of Phillips Sign & Lighting, Inc. All in any part of these designs (except registered trademarks) are protected. Attempts to duplicate designs without written consent may result in Legal Repressions.

phillips SIGN & LIGHTING inc.

PS&L

Ph: 586.468.7110

visit us at: **phillipssign.com**

Approved: *CPM*

Date: *12/2/24*

Permit: DM 11-4-24

40920 Executive Drive
Harrison Twp., MI
48045-1363



MAP-25-31

PUBLIC ALLEY 15 FT. WD.

EXETER ST. 60 FT. WD.

110 W. 7 MILE RD.

DERBY ST. 60 FT. WD.

PROPOSED BLADE SIGN
3' X 0.3' X 3'
(10.1' TO 12.6' ABOVE GRADE)

0.3'

3'

CURB

W. 7 MILE RD. 66 FT. WD.

10

8

6

EXETER ST. 60 FT. WD.

PUBLIC ALLEY 15 FT. WD.

DERBY ST. 60 FT. WD.

W. 7 MILE RD. 66 FT. WD.

■ - REQUEST ENCROACHMENT
(FOR PROPOSED BLADE SIGN)

(FOR OFFICE USE ONLY)

CARTO 37 D

B					
A					
DESCRIPTION	DATE	CHKD	APP	DATE	
DRAWN BY	LC	CHECKED	AP/TS		
DATE	04-07-2025	APPROVED	GE		

REQUEST ENCROACHMENT INTO
W. 7 MILE RD. BETWEEN
EXETER ST. AND DERBY ST.
AT 110 W. 7 MILE RD.

CITY OF DETROIT
CITY ENGINEERING DIVISION
SURVEY BUREAU

JOB NO. 25-31

DRWG. NO.