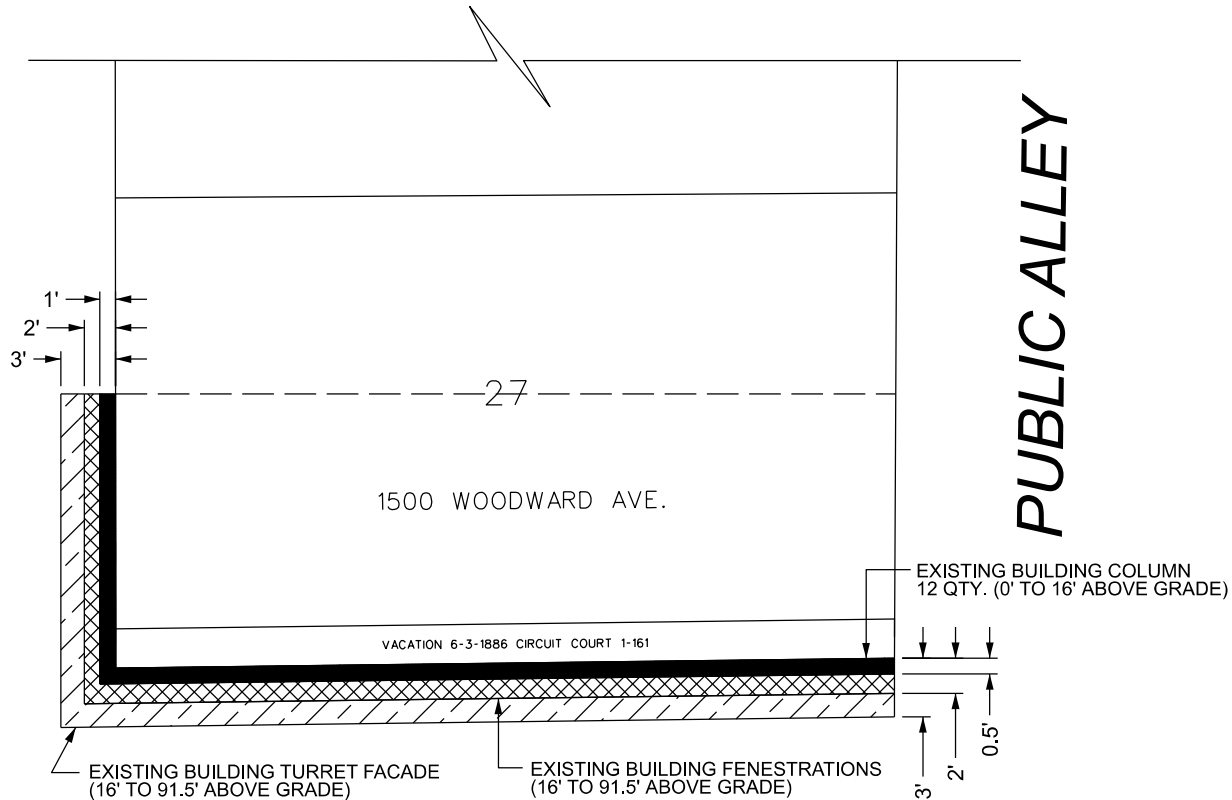


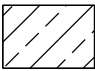
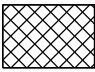



WOODWARD AVE. 120 FT. WD.



JOHN R. ST. 55 FT. WD.

(FOR OFFICE USE ONLY)

-  - REQUEST ENCROACHMENT (For Building Turret Facade)
-  - REQUEST ENCROACHMENT (For Building Fenestrations)
-  - REQUEST ENCROACHMENT (For Building Columns)

B					
A					
DESCRIPTION		DRWN	CHKD	APPD	DATE
REVISIONS					
DRAWN BY	AP	CHECKED		LC / TS	
DATE	05-02-2025	APPROVED		GE	

REQUEST ENCROACHMENT
INTO WOODWARD AVE. 120 FT. WD.,
JOHN R. ST. 55 FT.WD. AND NORTH/SOUTH PUBLIC ALLEY
AT 1500 WOODWARD AVE.

CITY OF DETROIT CITY ENGINEERING DIVISION SURVEY BUREAU	
JOB NO.	25-34
DRWG.NO.	02