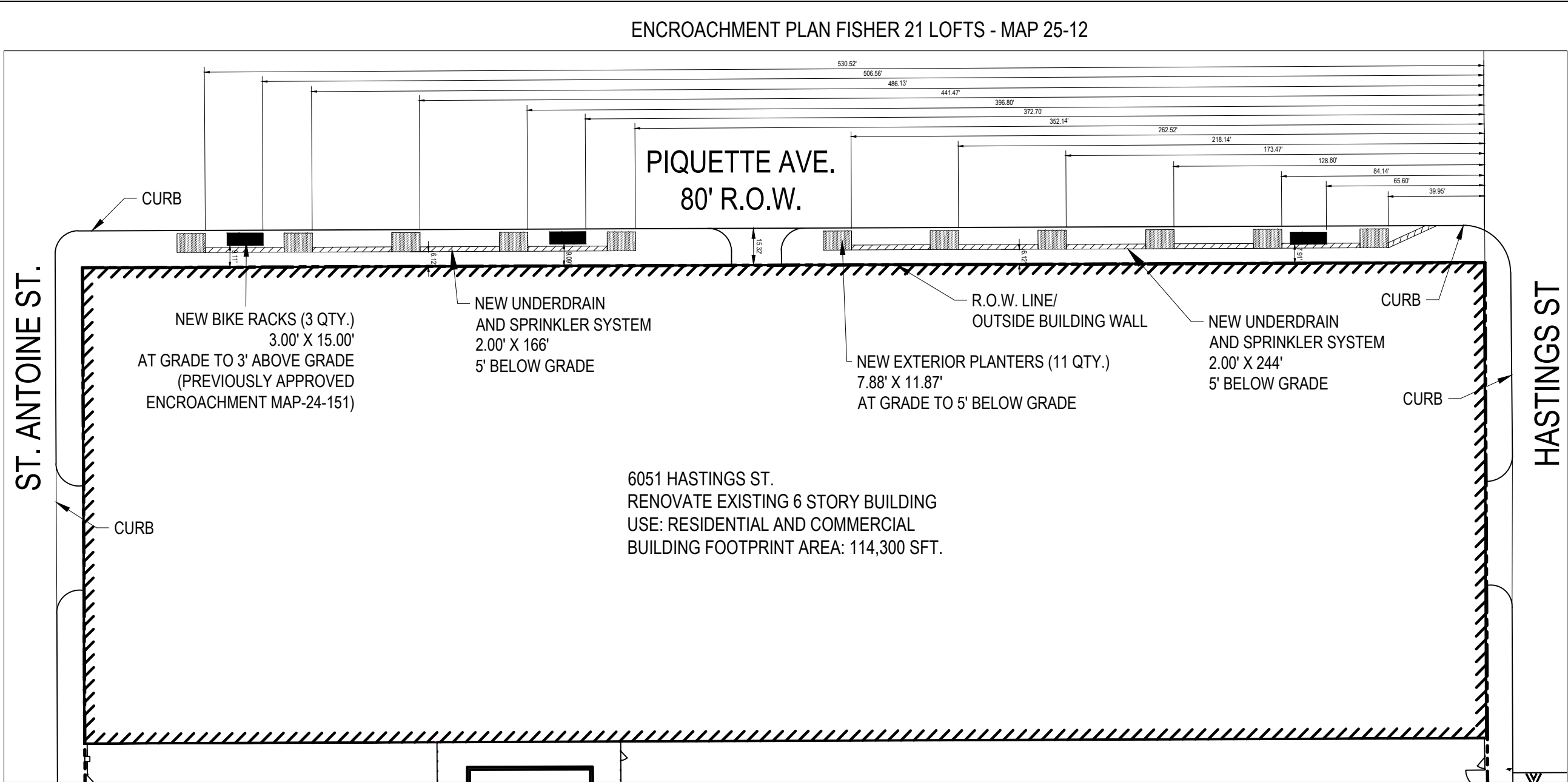


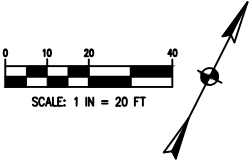
W:\Projects\2024\400-599\2400587\CAD\SHTS\ENCROACHMENT PLAN.dwg - Last printed 4/3/2025 5:05 PM




NOTE:  
THESE ENCROACHMENTS WILL NEITHER IMPEDE PEDESTRIAN NOR  
VEHICULAR TRAFFIC, NOR WILL THEY INTERFERE WITH THE  
MAINTENANCE OF THE PUBLIC RIGHTS-OF-WAY, INCLUDING UTILITY  
COMPANY AND FIRE DEPARTMENT ACCESS. THE REQUESTED  
ENCROACHMENTS MAINTAIN A MINIMUM 6 FOOT WIDE ADA ACCESS WAY  
WITHIN THE SIDEWALK FOR PEDESTRIAN USE. OBTAINING THESE  
ENCROACHMENTS ARE CRITICAL TO FULLY UTILIZE THIS PROPERTY AS  
COMMERCIAL ESTABLISHMENT AND WILL PROMOTE ACTIVITY ALONG THE  
STREET

ENCROACHMENT PLAN LEGEND

- REQUESTED ENCROACHMENT FOR EXTERIOR PLANTERS  
INCLUDING SILVA CELLS, UNDERDRAINS, AND GRATES.  
-BEGINNING AT GRADE TO 5 FT BELOW GRADE
- REQUESTED ENCROACHMENT FOR EXTERIOR  
UNDERDRAINS AND IRRIGATION SYSTEM.  
-5 FT BELOW GRADE
- REQUESTED ENCROACHMENT FOR EXTERIOR  
BIKE RACKS.  
-GRADE TO 3' ABOVE GRADE



1.0	ENCROACHMENT PLAN	FISHER 21 LOFTS  6051 HASTINGS STREET DETROIT, MI 48211	PREPARED FOR:  FISHER 21 LOFTS, LLC	 <b>TRANSMIT CELL CATIVE SPENT</b>  <a href="http://www.MannikSmithGroup.com">www.MannikSmithGroup.com</a>	607 SHELBY ST. SUITE 300 DETROIT, MI 48226 TEL: (313) 961-9500	NO.	DATE	BY	DESCRIPTION
						1	03/10/2025	KCC	CITY ROW ENCROACHMENT
						PROJECT DATE:	04/05/2022		
						PROJECT NO.:	401,240,087		
						DRAWN BY:	JBH		
						CHECKED BY:	JBH		