



**CITY OF DETROIT  
DEPARTMENT OF PUBLIC WORKS  
CITY ENGINEERING DIVISION**

**COLEMAN A. YOUNG MUNICIPAL CENTER  
2 WOODWARD AVE. SUITE 601  
DETROIT, MICHIGAN 48226  
PHONE: (313) 224-3949 TTY: 711  
WWW.DETROITMI.GOV**

---

To: Clerk's Office  
From: The Department of Public Works  
City Engineering Division  
MapsandRecordsBureau@DetroitMI.Gov  
(313) 224-3970

Petitioner:  
Great Lakes Water Authority  
9300 W Jefferson  
Detroit, MI 48209

On behalf of the above-mentioned petitioner the Department of Public Works: City Engineering Division is submitting a petition request for the below mentioned action. The petitioner has received a project consultation from the Department of Public Works: City Engineering Division and has been advised the following:

Type of action recommended:

Petition to request encroachment into the westerly part of Southfield Service Drive, adjacent to the parcel commonly known as 12235 Southfield Service Drive, for the installation of a new level sensor and a new electrical cabinet.

Georgine Gersdorff  
Manager II  
Department of Public Works  
City Engineering Division  
313-224-3985



CITY OF DETROIT  
DEPARTMENT OF PUBLIC WORKS  
CITY ENGINEERING DIVISION

COLEMAN A. YOUNG MUNICIPAL CENTER  
2 WOODWARD AVE. SUITE 601  
DETROIT, MICHIGAN 48226  
PHONE: (313) 224-3949 TTY: 711  
WWW.DETROITMI.GOV



Wade Trim, Inc.  
555 S. Saginaw Street, Suite 201 • Flint, MI 48502  
810.235.2555 • [www.wadetrim.com](http://www.wadetrim.com)

February 18, 2025

On Behalf of the Great Lakes Water Authority  
9300 West Jefferson Boulevard  
Detroit, MI 48209

Attention: City of Detroit Department of Public Works  
Engineering Division

Re: Encroachment - Letter of Intent

Dear City Engineer:

On behalf of the Great Lakes Water Authority (GLWA), I am requesting for a status change to the right-of-way for encroachment. This letter is to detail the summary of the proposed work in the right-of-way.

GLWA is planning to perform improvements at their Hubbell Southfield Combined Sewer Overflow (CSO) Facilities in the City of Dearborn. In coordination with the work being performed at the Hubbell Southfield facility, GLWA is proposing to refurbish two level sensors within the City of Detroit. GLWA is proposing to refurbish a level sensor at the Capital and Southfield Freeway West Service Drive at 12255 Southfield Road (L-205).

The sensor will be serviced by DTE Electric. New two-inch PVC conduit will be installed from the existing utility pole, on the fence line, to a new DTE meter and disconnection switch which will be in the berm. The new conduit will be installed 24 inches below grade. The meter and switch will be installed on a service rack, which will be 7.2 inches in depth, 27.25 inches in length, and 43.4 inches in height. From the new meter and switch, a new pedestal will be installed in the berm. We are proposing to remove the existing concrete pedestal and replace it with a new pedestal. New wires will be run through the existing one-inch conduit from the pedestal to the existing manhole in the roadway. The contractor shall clean and verify the depth of the existing conduit prior to installing the new wiring. New wires will then be run from the manhole in the roadway to the manhole under the overpass ramp. The new sensor and other instruments will be installed and housed in the manhole under the overpass ramp, as indicated on the plans. A new electrical cabinet will be installed on top of the new pedestal. The dimensions of the new cabinet will be 15 inches in depth, 20 inches in length, 36 inches in height, and 33.2 inches above the ground. The site will be restored according to City of Detroit specifications and standards. There will be no full road closures on Southfield Road; southbound traffic will be maintained.

Right-of-Way Permit Applications for this petition have been submitted to the Michigan Department of Transportation and City of Detroit, and they are currently under review (all related maps, drawings, and plan sheets are attached). If you need additional information regarding this project, please contact its project manager, Kevin VanderTuig, or Kashmira Patel at [kashmira.Patel@glwater.org](mailto:kashmira.Patel@glwater.org).

Very truly yours,

Wade Trim, Inc.

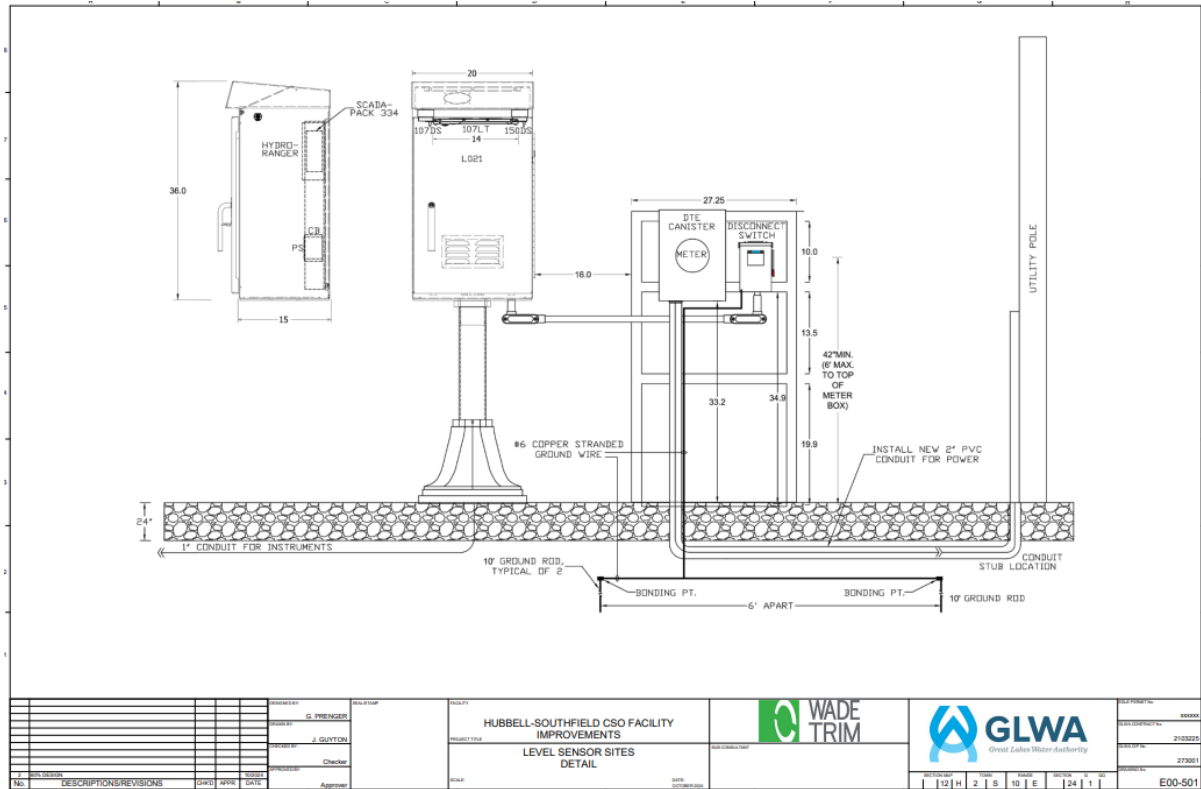
Danielle Garlington  
GLW 2033.01D  
[Letter of Intent ENG-24-1445\\_L205\\_12200 Southfield.docx](#)  
Attachments

cc: Kevin VanderTuig, Wade Trim



CITY OF DETROIT  
DEPARTMENT OF PUBLIC WORKS  
CITY ENGINEERING DIVISION

COLEMAN A. YOUNG MUNICIPAL CENTER  
2 WOODWARD AVE. SUITE 601  
DETROIT, MICHIGAN 48226  
PHONE: (313) 224-3949 TTY: 711  
WWW.DETROITMI.GOV







CITY OF DETROIT  
DEPARTMENT OF PUBLIC WORKS  
CITY ENGINEERING DIVISION

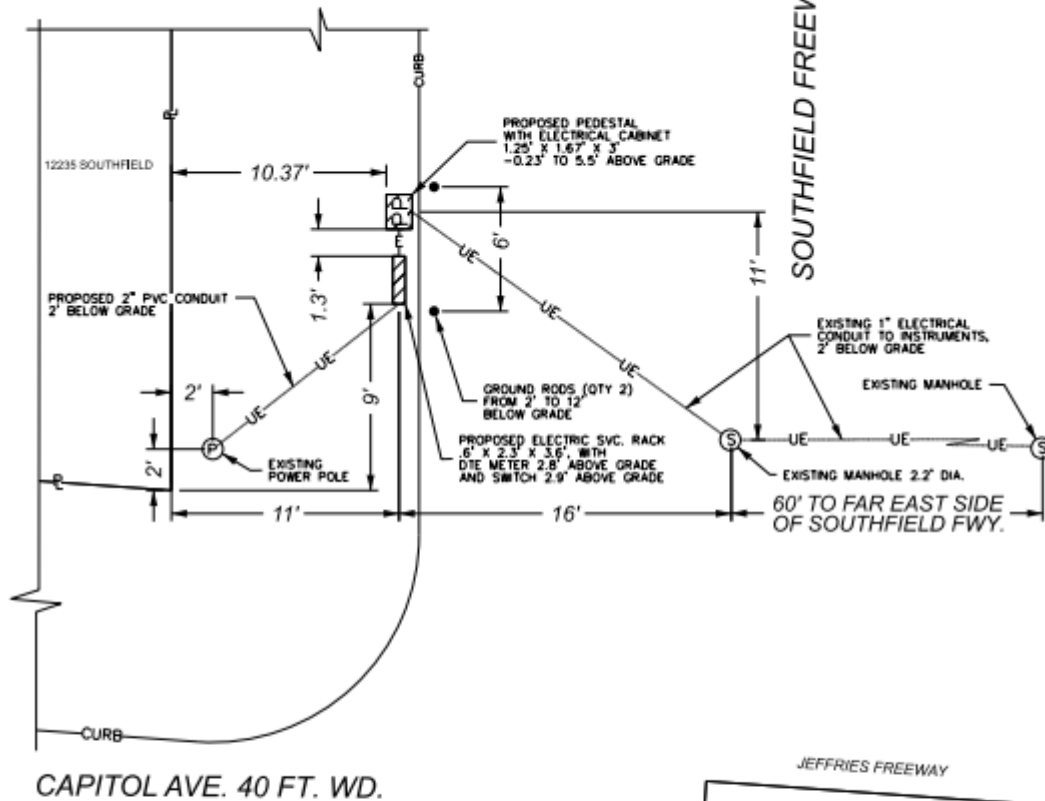
COLEMAN A. YOUNG MUNICIPAL CENTER  
2 WOODWARD AVE. SUITE 601  
DETROIT, MICHIGAN 48226  
PHONE: (313) 224-3949 TTY: 711  
WWW.DETROITMI.GOV

MAP-25-13



JEFFRIES FREEWAY

SOUTHFIELD FREEWAY



CAPITOL AVE. 40 FT. WD.

⚡ - ELECTRICAL CONDUIT

• - BELOW GRADE GROUND RODS (QTY 2)

UE  
UE  
UE - BELOW GRADE ELECTRICAL CONDUIT

 - REQUEST ENCROACHMENT (FOR ELECTRIC SERVICE RACK AND PEDestal WITH ELECTRICAL CABINET INCLUDING 2' COMPACT GRANULAR FILL AND 0.16' SAND BED)

(FOR OFFICE USE ONLY)

CARTO 101 D

B					
A					
DESCRIPTION		REV	CHG	APP	DATE
REVISIONS					
DRAWN BY LC		CHECKED AP/TS			
DATE 04-23-2025		APPROVED GE			

REQUEST ENCROACHMENT INTO THE  
SOUTHFIELD FWY. SERVICE DRIVE  
AT 12235 SOUTHFIELD

CITY OF DETROIT  
CITY ENGINEERING DIVISION  
SURVEY BUREAU

JOB NO. 25-13

DRWG. NO.