

Janice M. Winfrey  
City Clerk

**City of Detroit**  
OFFICE OF THE CITY CLERK

Andre P. Gilbert II  
Deputy City Clerk

**DEPARTMENT PETITION REFERENCE COMMUNICATION**

*To: The Department or Commission Listed Below*

*From: Janice M Winfrey, Detroit City Clerk*

---

The following petition is herewith referred to you for report and recommendation to the City Council.

In accordance with that body's directive, kindly return the same with your report in duplicate within four (4) weeks.

---

Petition No.	2025-078
Name of Petitioner	Great Lakes Water Authority
Description of Petition	Petition to request encroachment into the westerly part of Hubbell Ave., adjacent to the parcel commonly known as 9533 Hubbell Ave., for the installation of a new level sensor and a new electrical cabinet.
Type of Petition	<b>Alley Vacation/Encroachment/Utility Vacation</b>
Submission Date	04/23/25
Concerned Departments	Media Services, Building & Safety Engineering, Police Department, Fire Department, Municipal Parking Department, Transportation Department, Health Department, General Services Department
Petitioner Contact	Kevin Vander Tuig or Kashmira Patel <a href="mailto:kvandertuig@wadetrim.com">kvandertuig@wadetrim.com</a> <a href="mailto:Kashmira.Patel@glwater.org">Kashmira.Patel@glwater.org</a>



**CITY OF DETROIT  
DEPARTMENT OF PUBLIC WORKS  
CITY ENGINEERING DIVISION**

**COLEMAN A. YOUNG MUNICIPAL CENTER  
2 WOODWARD AVE. SUITE 601  
DETROIT, MICHIGAN 48226  
PHONE: (313) 224-3949 TTY: 711  
WWW.DETROITMI.GOV**

---

To: Clerk's Office  
From: The Department of Public Works  
City Engineering Division  
MapsandRecordsBureau@DetroitMI.Gov  
(313) 224-3970

Petitioner:  
Great Lakes Water Authority  
9300 W Jefferson  
Detroit, MI 48209

On behalf of the above-mentioned petitioner the Department of Public Works: City Engineering Division is submitting a petition request for the below mentioned action. The petitioner has received a project consultation from the Department of Public Works: City Engineering Division and has been advised the following:

Type of action recommended:

Petition to request encroachment into the westerly part of Hubbell Ave., adjacent to the parcel commonly known as 9533 Hubbell Ave., for the installation of a new level sensor and a new electrical cabinet.

Georgine Gersdorff  
Manager II  
Department of Public Works  
City Engineering Division  
313-224-3985



**CITY OF DETROIT  
DEPARTMENT OF PUBLIC WORKS  
CITY ENGINEERING DIVISION**

**COLEMAN A. YOUNG MUNICIPAL CENTER  
2 WOODWARD AVE. SUITE 601  
DETROIT, MICHIGAN 48226  
PHONE: (313) 224-3949 TTY: 711  
WWW.DETROITMI.GOV**



**Wade Trim, Inc.**  
555 S. Saginaw Street, Suite 201 • Flint, MI 48502  
810.235.2555 • [www.wadetrिम.com](http://www.wadetrिम.com)

December 10, 2024

On Behalf of  
Great Lakes Water Authority  
9300 West Jefferson Boulevard  
Detroit, MI 48209

Attention: City of Detroit-Dept of Public Works  
Engineering Division

Re: Encroachment - Letter of Intent

Dear City Engineer:

On behalf of Great Lakes Water Authority (GLWA), I am requesting for a status change to the right of way for encroachment. This letter is to detail the summary of the proposed work in the right of way.

GLWA, is planning to perform improvements at their Hubbell Southfield Combined Sewer Overflow (CSO) Facilities in the City of Dearborn. In coordination with the work being performed at the Hubbell Southfield facility, GLWA is proposing to refurbish two level sensors within the City of Detroit. GLWA is proposing to refurbish a level sensor at West Chicago and Hubbell at 9523 Hubbell (L-201).

The sensor will be serviced by DTE electric. New 2-inch PVC conduit will be installed from the existing utility pole, in the berm, to a new DTE meter. From the new meter, a new pedestal will be installed. We are proposing to remove the existing concrete pedestal and replace it with a new pedestal. New wire will be run through the existing 1-inch conduit from the pedestal to the existing manhole in the roadway. The new sensor and other instruments will be installed and housed in existing manhole indicated on the plans. A new electrical cabinet will be installed on top of the new pedestal. The dimensions of the new cabinet will be 15 inches in depth, 20 inches in length, and 36 inches in height. The site will be restored according to City of Detroit specifications and standards.

The right of way permit application for this petition has been submitted and is currently under review. See attached for all related maps, drawings, and plan sheets.



**CITY OF DETROIT  
DEPARTMENT OF PUBLIC WORKS  
CITY ENGINEERING DIVISION**

**COLEMAN A. YOUNG MUNICIPAL CENTER  
2 WOODWARD AVE. SUITE 601  
DETROIT, MICHIGAN 48226  
PHONE: (313) 224-3949 TTY: 711  
WWW.DETROITMI.GOV**

---

Great Lakes Water Authority  
December 10, 2024  
Page 2

If you need additional information regarding this project, please contact its project manager, Kevin Vander Tuig or Kashmira Patel, respectively at [kvandertuig@wadetrim.com](mailto:kvandertuig@wadetrim.com) and [kashmira.Patel@glwater.org](mailto:kashmira.Patel@glwater.org).

Very truly yours,

Wade Trim, Inc.

Danielle Garlington  
Engineer

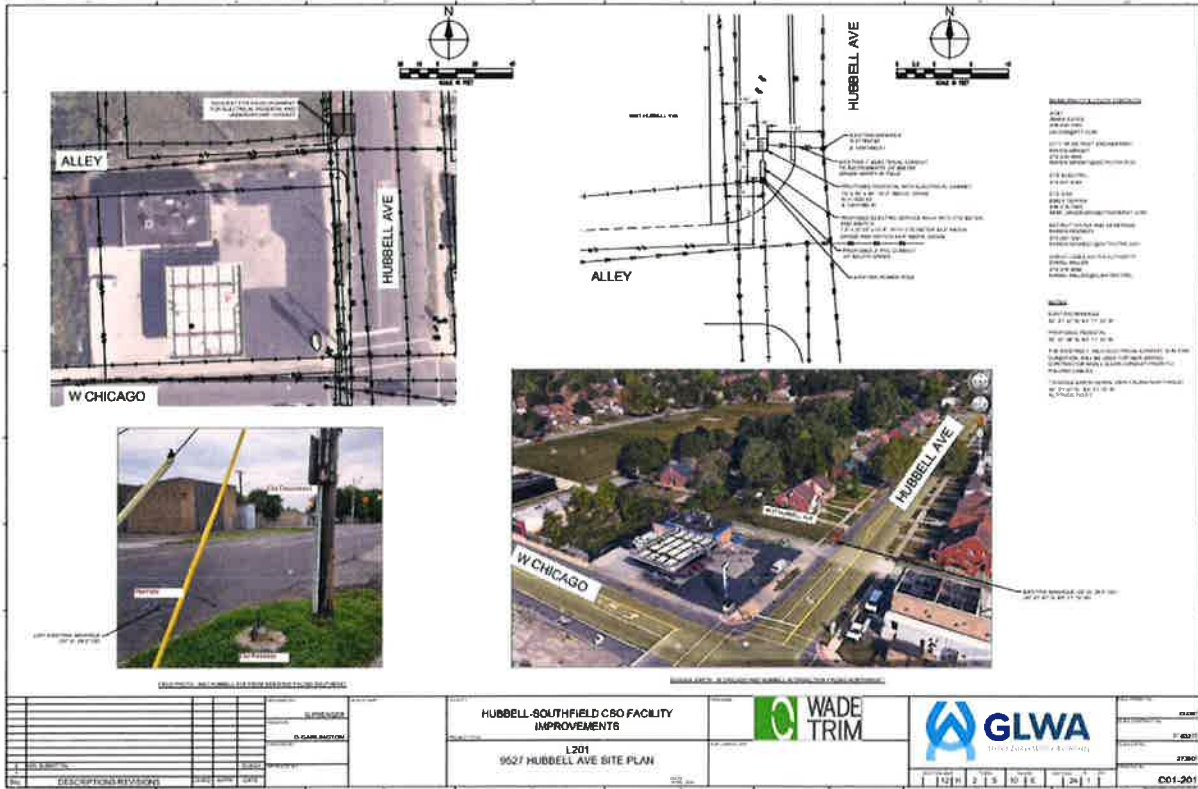
DG:reb  
GLW2033  
[20241210\\_Letter of Intent ENG-24-1443\\_L201\\_9533 Hubbell.docx](#)

cc: Kevin Vander Tuig



**CITY OF DETROIT**  
**DEPARTMENT OF PUBLIC WORKS**  
**CITY ENGINEERING DIVISION**

**COLEMAN A. YOUNG MUNICIPAL CENTER**  
**2 WOODWARD AVE. SUITE 601**  
**DETROIT, MICHIGAN 48226**  
**PHONE: (313) 224-3949 TTY: 711**  
**WWW.DETROITMI.GOV**



MAP-24-180

ORANGELAWN AVE. 60 FT. WD.

MARLOWE AVE. 60 FT. WD.

HUBBELL AVE. 66 FT. WD.

PUBLIC ALLEY 18 FT. WD.

HUBBELL AVE. 66 FT. WD.

396

9533 HUBBELL AVE.

EXISTING MANHOLE 2.2' DIA

EXISTING 1" ELECTRICAL CONDUIT TO INSTRUMENTS, 2' BELOW GRADE

PROPOSED PEDESTAL WITH ELECTRICAL CABINET 1.25' X 1.67' X 3' -0.23' TO 5.5' ABOVE GRADE

PROPOSED ELECTRIC SERVICE RACK .6' X 2.3' X 3.6' WITH DTE METER 2.8' ABOVE GRADE AND SWITCH 2.9' ABOVE GRADE

EXISTING POWER POLE

PROPOSED 2" PVC CONDUIT 2' BELOW GRADE

ORANGELAWN AVE. 60 FT. WD.

MARLOWE AVE. 60 FT. WD.

HUBBELL AVE. 66 FT. WD.

PUBLIC ALLEY 18 FT. WD.

HUBBELL AVE. 66 FT. WD.

277

276

395

396

11

9

7

5

3

1

WEST CHICAGO AVE. 66 FT. WD.

LEGEND:

- ELECTRICAL CONDUIT
- BELOW GRADE GROUND ROD (QTY 2)
- BELOW GRADE ELECTRICAL CONDUIT
- REQUEST ENCROACHMENT (FOR ELECTRIC SERVICE RACK AND PEDESTAL WITH ELECTRICAL CABINET INCLUDING 2' COMPACT GRANULAR FILL AND 0.16' SAND BED)

(FOR OFFICE USE ONLY)

CARTO 82 C

B

A

DESCRIPTION

REVISED

DATE

AP/TS

DATE

04-22-2025

GE

REQUEST ENCROACHMENT INTO HUBBELL ST. AT 9533 HUBBELL

CITY OF DETROIT

CITY ENGINEERING DIVISION

SURVEY BUREAU

JOB NO. 24-180

DRAWING NO.