

Janice M. Winfrey
City Clerk

City of Detroit
OFFICE OF THE CITY CLERK

Andre P. Gilbert II
Deputy City Clerk

DEPARTMENT PETITION REFERENCE COMMUNICATION

To: The Department or Commission Listed Below

From: Janice M Winfrey, Detroit City Clerk

The following petition is herewith referred to you for report and recommendation to the City Council.

In accordance with that body's directive, kindly return the same with your report in duplicate within four (4) weeks.

Petition No.	2025-072
Name of Petitioner	Rory Quentin Hyde
Description of Petition	Petition to request the vacation with the reservation of a utility easement the westerly 90.5' of the east-west public alley bounded by Queen St., Rosemary Ave., Hayes St., and E Outer Drive.
Type of Petition	Alley Vacation/Encroachment/Utility Vacation
Submission Date	04/14/25
Concerned Departments	Media Services, Building & Safety Engineering, Police Department, Fire Department, Municipal Parking Department, Transportation Department, Health Department, General Services Department
Petitioner Contact	Rory Quentin Hyde 9721 E Outer Dr Detroit, MI 48213 P: (586) 530-8681



**CITY OF DETROIT
DEPARTMENT OF PUBLIC WORKS
CITY ENGINEERING DIVISION**

**COLEMAN A. YOUNG MUNICIPAL CENTER
2 WOODWARD AVE. SUITE 601
DETROIT, MICHIGAN 48226
PHONE: (313) 224-3949 TTY: 711
WWW.DETROITMI.GOV**

To: Clerk's Office
From: The Department of Public Works
City Engineering Division
MapsandRecordsBureau@DetroitMI.Gov
(313) 224-3970

Petitioner:
Rory Quentin Hyde
9721 E Outer Drive
Detroit, MI 48213

On behalf of the above-mentioned petitioner the Department of Public Works: City Engineering Division is submitting a petition request for the below mentioned action. The petitioner has received a project consultation from the Department of Public Works: City Engineering Division and has been advised the following:

Type of action recommended:

Petition to request the vacation with the reservation of a utility easement the westerly 90.5' of the east-west public alley bounded by Queen St., Rosemary Ave., Hayes St., and E Outer Drive.

Georgine Gersdorff
Manager II
Department of Public Works
City Engineering Division
313-224-3985



**CITY OF DETROIT
DEPARTMENT OF PUBLIC WORKS
CITY ENGINEERING DIVISION**

**COLEMAN A. YOUNG MUNICIPAL CENTER
2 WOODWARD AVE. SUITE 601
DETROIT, MICHIGAN 48226
PHONE: (313) 224-3949 TTY: 711
WWW.DETROITMI.GOV**

City of Detroit

Department of Public Works - Maps and Records Bureau

Coleman A. Young Municipal Center

2 Woodward Avenue Suite 642

Detroit, MI 48226

To whom it may concern,

I, Rory Quentin Hyde, owner of 9721 E Outer Dr, 14900 Rosemary and 14912 Rosemary am writing with the intent to petition to vacate the open alley behind my home to for Conversion to Easement.

Public record shows that the majority of the alley in this block (Queen, Hayes, E Outer Dr, Rosemary) was converted in this manner approved March 6, 1985. Currently, this two-lot alley is an unpaved dead end and does not serve any garages. I petition to complete this vacation from the western edge of the easement to Queen.

I own three of the 4 parcels abutting said residential alley and intend to revise my parcels to combine them. This vacation will be necessary to process my parcel revision and is integral to the preservation and enjoyment of my property rights.

I am a Landscape Designer working for OHM Advisors at the Detroit office. Granting this vacation will allow me to continue to maintain said parcels as one continuous property. It is my desire to beautify the end of my block by replacing the lawns on these empty lots with ornamental beds of wildflowers and native shrubs to promote biodiversity, provide habitat for birds and butterflies, reduce water use, and enhance property values.

Thank you for your consideration,

Rory Quentin Hyde

(586) 530-8681

9721 E Outer Dr

Detroit, MI 48213



CITY OF DETROIT
DEPARTMENT OF PUBLIC WORKS
CITY ENGINEERING DIVISION

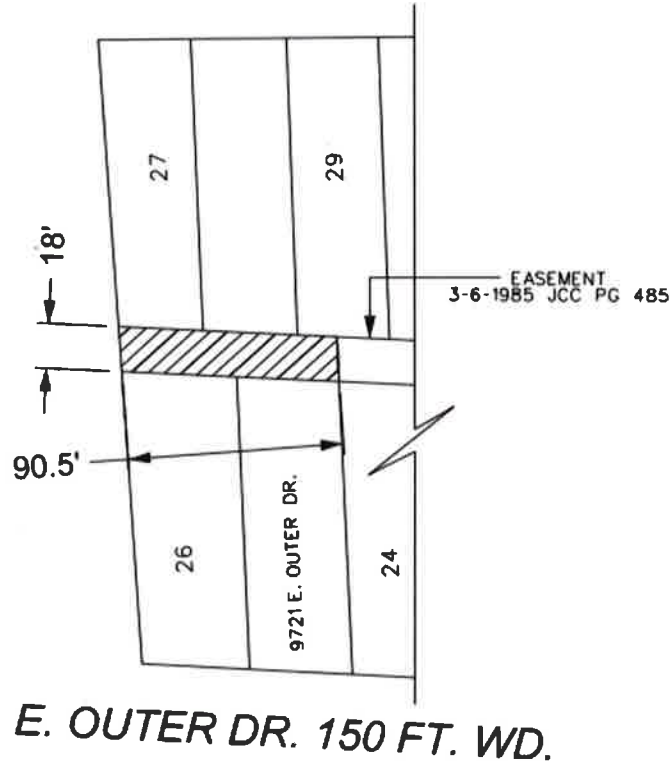
COLEMAN A. YOUNG MUNICIPAL CENTER
2 WOODWARD AVE. SUITE 601
DETROIT, MICHIGAN 48226
PHONE: (313) 224-3949 TTY: 711
WWW.DETROITMI.GOV

MAP-25-28

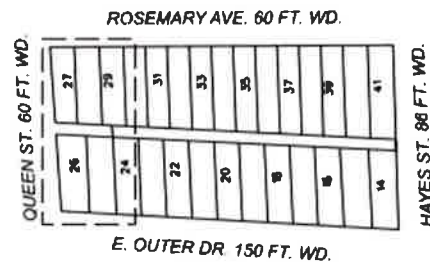


ROSEMARY AVE. 60 FT. WD.

QUEEN ST. 60 FT. WD.



E. OUTER DR. 150 FT. WD.





**CITY OF DETROIT
DEPARTMENT OF PUBLIC WORKS
CITY ENGINEERING DIVISION**

**COLEMAN A. YOUNG MUNICIPAL CENTER
2 WOODWARD AVE. SUITE 601
DETROIT, MICHIGAN 48226
PHONE: (313) 224-3949 TTY: 711
WWW.DETROITMI.GOV**
