



**CITY OF DETROIT
DEPARTMENT OF PUBLIC WORKS
CITY ENGINEERING DIVISION**

**COLEMAN A. YOUNG MUNICIPAL CENTER
2 WOODWARD AVE. SUITE 601
DETROIT, MICHIGAN 48226
PHONE: (313) 224-3949 TTY: 711
WWW.DETROITMI.GOV**

To: Clerk's Office
From: The Department of Public Works
City Engineering Division
MapsandRecordsBureau@DetroitMI.Gov
(313) 224-3970

Petitioner:
Kintsugi Village Holdings, L3C
1420 Washington Blvd., Ste 301
Detroit, MI 48226

On behalf of the above-mentioned petitioner the Department of Public Works: City Engineering Division is submitting a petition request for the below mentioned action. The petitioner has received a project consultation from the Department of Public Works: City Engineering Division and has been advised the following:

Type of action recommended:

Petition to request vacating with the reservation of a utility easement, the north-south public alley bounded by 14th St., Dalzelle St., Wabash St., and Marantette St.

Georgine Gersdorff
Manager II
Department of Public Works
City Engineering Division
313-224-3985



CITY OF DETROIT
DEPARTMENT OF PUBLIC WORKS
CITY ENGINEERING DIVISION

COLEMAN A. YOUNG MUNICIPAL CENTER
2 WOODWARD AVE. SUITE 601
DETROIT, MICHIGAN 48226
PHONE: (313) 224-3949 TTY: 711
WWW.DETROITMI.GOV



October 5, 2024

Honorable Detroit City Council
C/o Detroit City Clerk
200 Coleman A. Young Municipal Center
2 Woodward Avenue
Detroit, Michigan 48226

RE: Giffels Webster - Request to vacate a public alley with reservation of utility easement.

Giffels Webster, 28 W. Adams, Suite 1200, Detroit, Michigan 48226 on behalf of Kintsugi Village, 2020 14th Street, Detroit, MI, 48216, respectfully requests that the City of Detroit vacate the following public alley with reservation of the utility easement:

- The public alley (20 feet wide) in the block bounded by 14th Street (80 feet wide), Dalzelle Street (70 feet wide), Wabash Street (65 feet wide) and Marantette Street (60 feet wide).

Limits of the requested vacation and adjacent property owner letters of support can be found in the attachment, enclosed herein.

Giffels Webster has been asked to facilitate the requested vacation. If you should have any questions, please do not hesitate to contact me at (P) 313.962.4442 (M) 313.980.1469 or mmarks@giffelswebster.com.

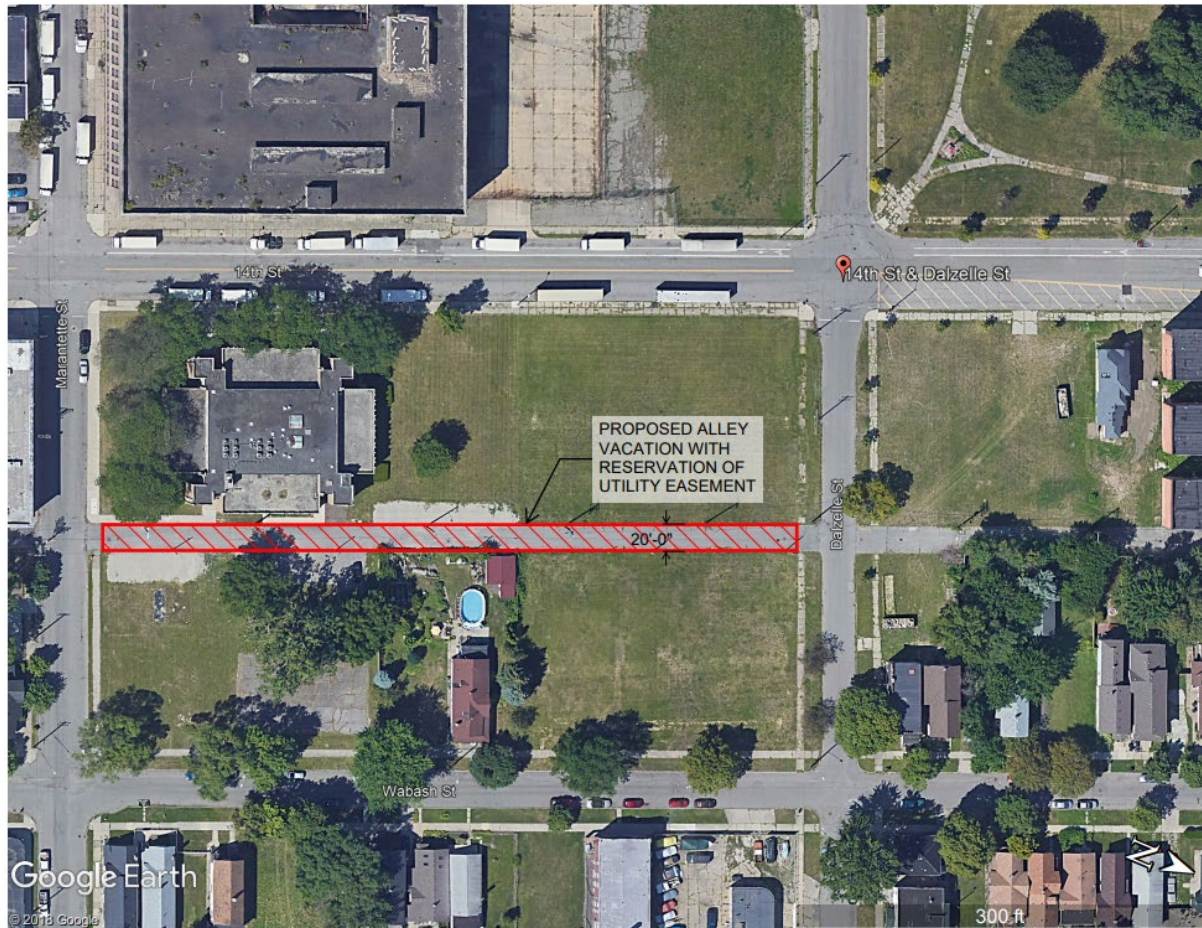
Respectfully,

Michael W. Marks P.E.,
Partner | Treasurer
Giffels Webster



CITY OF DETROIT
DEPARTMENT OF PUBLIC WORKS
CITY ENGINEERING DIVISION

COLEMAN A. YOUNG MUNICIPAL CENTER
2 WOODWARD AVE. SUITE 601
DETROIT, MICHIGAN 48226
PHONE: (313) 224-3949 TTY: 711
WWW.DETROITMI.GOV





CITY OF DETROIT
DEPARTMENT OF PUBLIC WORKS
CITY ENGINEERING DIVISION

COLEMAN A. YOUNG MUNICIPAL CENTER
2 WOODWARD AVE. SUITE 601
DETROIT, MICHIGAN 48226
PHONE: (313) 224-3949 TTY: 711
WWW.DETROITMI.GOV

MAP-24-165



DALZELLE ST. 50 FT. WD.

14TH ST. 60 FT. WD.

43	44
46	45
49	50
52	51
55	56
58	57
61	62
64	63
67	68
70	69

WABASH ST. 65 FT. WD.

→ | ← 20'

MARANTETTE ST. 60 FT. WD.



- REQUEST VACATION WITH EASEMENT

(FOR OFFICE USE ONLY)

CARTO 18 A 19 F

B					
A					
DESCRIPTION		DATE	CHKD	APP	DATE
REVISIONS					
DRAWN BY	AP	CHECKED	LC / TS		
DATE	11-12-2024	APPROVED	RW		

REQUEST VACATION WITH EASEMENT
THE NORTH / SOUTH ALLEY 20 FT. WD.
BOUNDED BY
14TH ST., DALZELLE ST., WABASH ST.,
AND MARANTETTE ST.

CITY OF DETROIT
CITY ENGINEERING DIVISION
SURVEY BUREAU

JOB NO. 24-165

DRWG. NO.