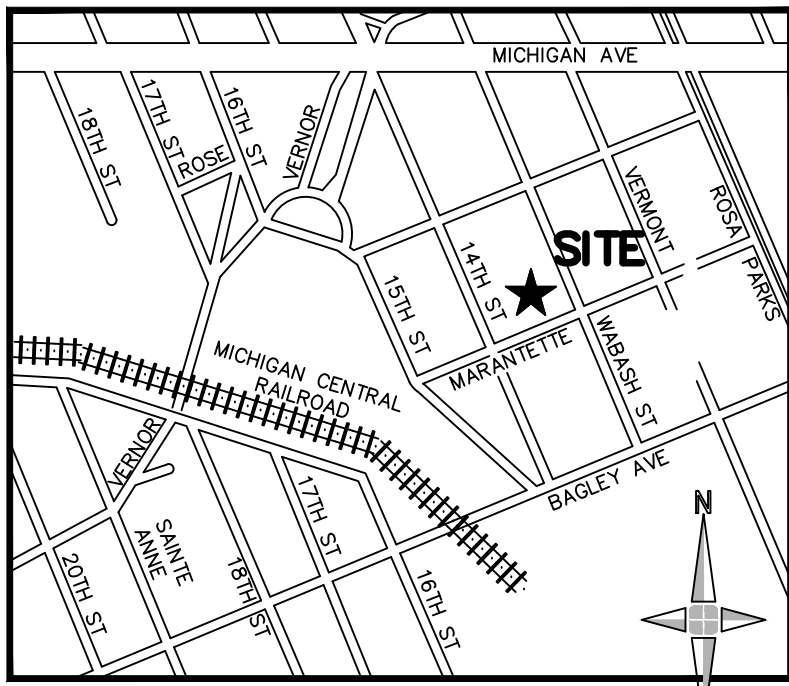
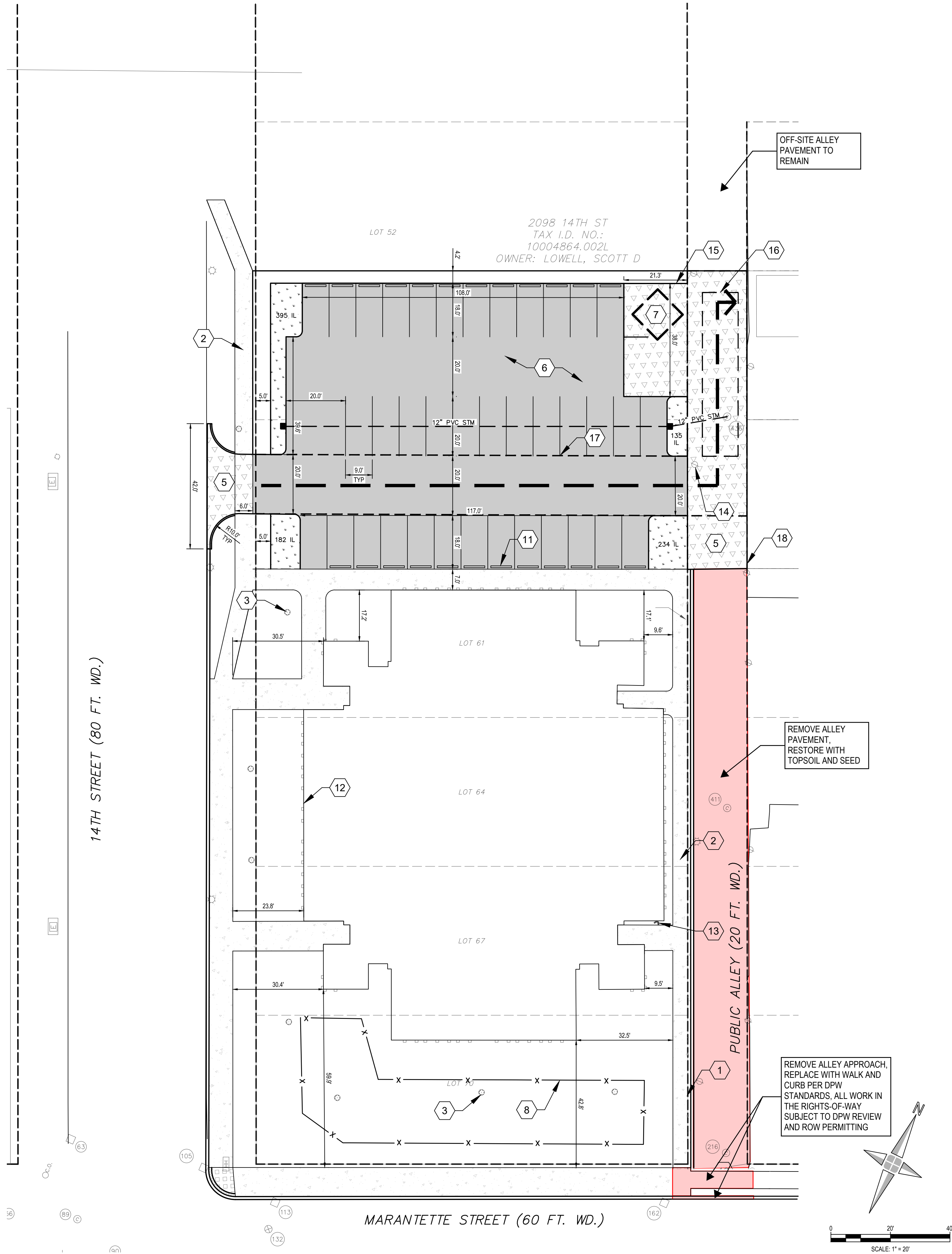


V:\20569.000 Kintsugi Village\Design\CAD\Work Sheets\C-500 Geometric & Paving Plan.dwg



LOCATION MAP
(NOT TO SCALE)

PAVING PLAN - LEGEND

- 4" CONCRETE SIDEWALK PAVEMENT
- 6" CONCRETE PAVEMENT
- STANDARD DUTY HMA
- 8" CONCRETE DRIVEWAY PAVEMENT
- ADJACENT PROPERTY ACCESS PATH

PAVING PLAN - KEY NOTES

- 1 INTEGRAL CURB AND SIDEWALK, TYP.
- 2 4" CONCRETE SIDEWALK PAVEMENT, TYP. SEE DETAIL ON SHEET C-800
- 3 PROTECT EXISTING TREE, TYP
- 4 6" CONCRETE SIDEWALK PAVEMENT
- 5 8" CONCRETE PAVEMENT PER CITY OF DETROIT ALLEY PAVEMENT DETAIL AND JOINTING
- 6 STANDARD DUTY HMA PAVEMENT
- 7 TRASH DISPOSAL BIN & AREA
- 8 PROPOSED FENCE
- 9 ADA COMPLIANT BARRIER FREE CURB RAMP PER CITY OF DETROIT STANDARDS
- 10 EXISTING HYDRANT
- 11 CONCRETE PARKING BLOCK, SEE DETAIL ON C-800
- 12 EXISTING BUILDING
- 13 EXISTING FDC CONNECTION
- 14 EXISTING ELECTRICAL STRUCTURE RELOCATION TO BE COORDINATED WITH DTE
- 15 MASONRY SCREEN WALL, 8'-0" MAX, SEE ARCHITECTURE FOR DETAILS
- 16 PROPOSED 12'-0" x 55'-0" LOADING ZONE
- 17 PROPOSED INGRESS-EGRESS EASEMENT
- 18 PUBLIC ALLEY TO BE VACATED WITH RESERVATION OF EASEMENT, MAP-24-XXX

giffels
webster

Engineers
Surveyors
Planners
Landscape Architects

28 West Adams Road
Suite 1200
Detroit, MI 48226
p (313) 962-4442
f (313) 962-5068
www.giffelswebster.com

Executive: MM
Manager: DR
Designer: SC
Quality Control: DR
Section:

Professional Seal:



Know what's below.
Call before you dig.

DATE:	ISSUE:
2024-10-10	GEOMETRIC & PAVING EXHIBIT

Developed For:

KINTSUGI
VILLAGE

14TH ST & MARANTETTE

GEOMETRIC &
PAVING PLAN

Kintsugi Parking Layout,
Option B

Detroit
Wayne
MICHIGAN

Date: 2024-10-10
Scale: 1"=20'
Sheet: C-500
Project: 20569.000

Copyright © 2023 Giffels Webster.
No reproduction shall be made without the
prior written consent of Giffels Webster.