

Janice M. Winfrey
City Clerk

City of Detroit
OFFICE OF THE CITY CLERK

Andre P. Gilbert II
Deputy City Clerk

DEPARTMENT PETITION REFERENCE COMMUNICATION

To: The Department or Commission Listed Below

From: Janice M Winfrey, Detroit City Clerk

The following petition is herewith referred to you for report and recommendation to the City Council.

In accordance with that body's directive, kindly return the same with your report in duplicate within four (4) weeks.

Petition No. 2025-035

Name of Petitioner Henry Ford Health System

Description of Petition Petition to request an encroachment into Lincoln St. for six new steel service pipes. The proposed below grade encroachment is for the Henry Ford Health Central Energy Hub (CEH) hydronic piping. The CEH hydronic piping consists of six privately owned pipes: three insulated chilled water pipes with a 36-inch outside diameter and three insulated hot water pipes with a 30-inch outside diameter, with 1-foot spacing between each pipe. The system utilizes steel service pipes with polyurethane insulation and HDPE jacket.

Type of Petition **Alley Vacation/Encroachment/Utility Vacation**

Submission Date 02/26/25

Concerned Departments Media Services, Building & Safety Engineering, Police Department, Fire Department, Municipal Parking Department, Transportation Department, Health Department, General Services Department

Petitioner Contact Giffels Webster
(Ph) 313-962-4442
rjones@giffelswebster.com

2 Woodward Ave. Coleman A. Young Municipal Center Rm. 200, Detroit, MI 48226

(313) 224 - 3260 | Fax: (313) 224 - 1466



To: Clerk's Office
From: The Department of Public Works
City Engineering Division
MapsandRecordsBureau@DetroitMI.Gov
(313) 224-3970

On behalf of the above-mentioned petitioner the Department of Public Works: City Engineering Division is submitting a petition request for the action below. The petitioner has received a project consultation from the Department of Public Works: City Engineering Division and has been advised the following:

Petition for encroachment into Lincoln St. for six new steel service pipes. The proposed below grade encroachment is for the Henry Ford Health Central Energy Hub (CEH) hydronic piping. The CEH hydronic piping consists of six privately owned pipes: three insulated chilled water pipes with a 36-inch outside diameter and three insulated hot water pipes with a 30-inch outside diameter, with 1-foot spacing between each pipe. The system utilizes steel service pipes with polyurethane insulation and HDPE jacket.



**CITY OF DETROIT
DEPARTMENT OF PUBLIC WORKS
CITY ENGINEERING DIVISION**

**COLEMAN A. YOUNG MUNICIPAL CENTER
2 WOODWARD AVE. SUITE 601
DETROIT, MICHIGAN 48226
PHONE: (313) 224-3949 TTY: 711
WWW.DETROITMI.GOV**

January 16, 2025

**Honorable Detroit City Council
C/o Detroit City Clerk
200 Coleman A. Young Municipal Center
2 Woodward Avenue
Detroit, Michigan 48226**

RE: Giffels Webster - Request for an encroachment into the right-of-way of Lincoln St (60 ft. wide) between Baltimore St and Milwaukee Avenue.

Giffels Webster, 28 W. Adams, Suite 1200, Detroit, Michigan 48226 on behalf of Kiewit Power Constructors Co., 8900 Renner Blvd., Lenexa, Kansas, 66219 respectfully requests the following below grade encroachment into the City of Detroit public right-of-way:

- The proposed below grade encroachment is for the Henry Ford Health Central Energy Hub (CEH) hydronic piping. The CEH hydronic piping consists of six privately owned pipes: three insulated chilled water pipes with a 36-inch outside diameter and three insulated hot water pipes with a 30-inch outside diameter, with 1-foot spacing between each pipe. The system utilizes steel service pipes with polyurethane insulation and HDPE jacket. The proposed encroachment begins at the right-of-way line at the southwest corner of Milwaukee Ave and Lincoln St, extends south 24.5 ft and spans the full 60-foot width of Lincoln St to the east. The proposed encroachment begins 3.5' below grade and extends to 7.5' below grade.

Limits of the requested encroachments can be found in the attachment, enclosed herein. Additional documentation further detailing the proposed encroachment for the CEH hydronic piping, including a spec sheet for the pipe material, is attached.

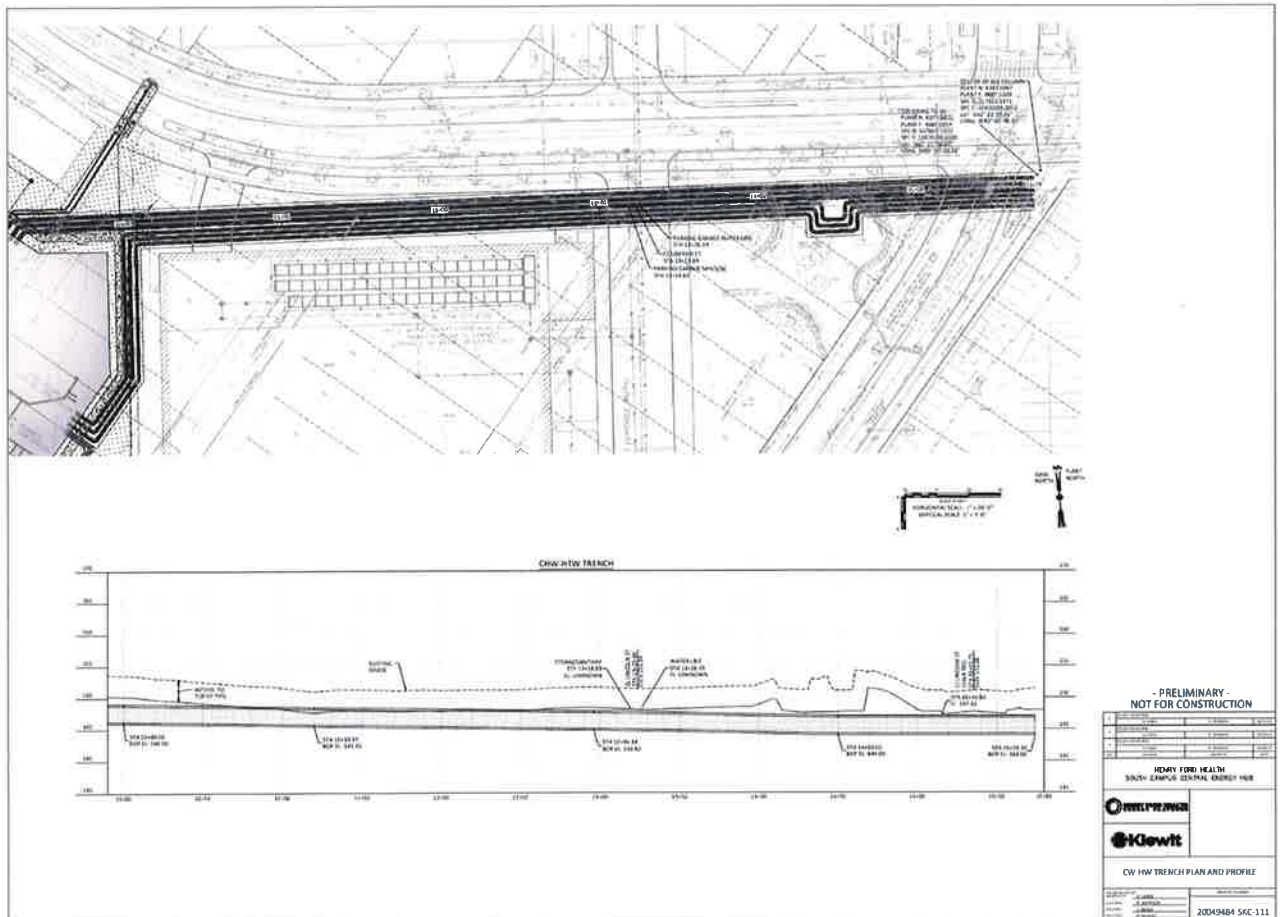
Giffels Webster has been asked to facilitate the requested encroachments on behalf of Kiewit Power Constructors Co. If you should have any questions, please do not hesitate to contact me at 313.962.4442 or at rjones@giffelswebster.com.

Respectfully,

Ryan Jones, PE
Project Manager



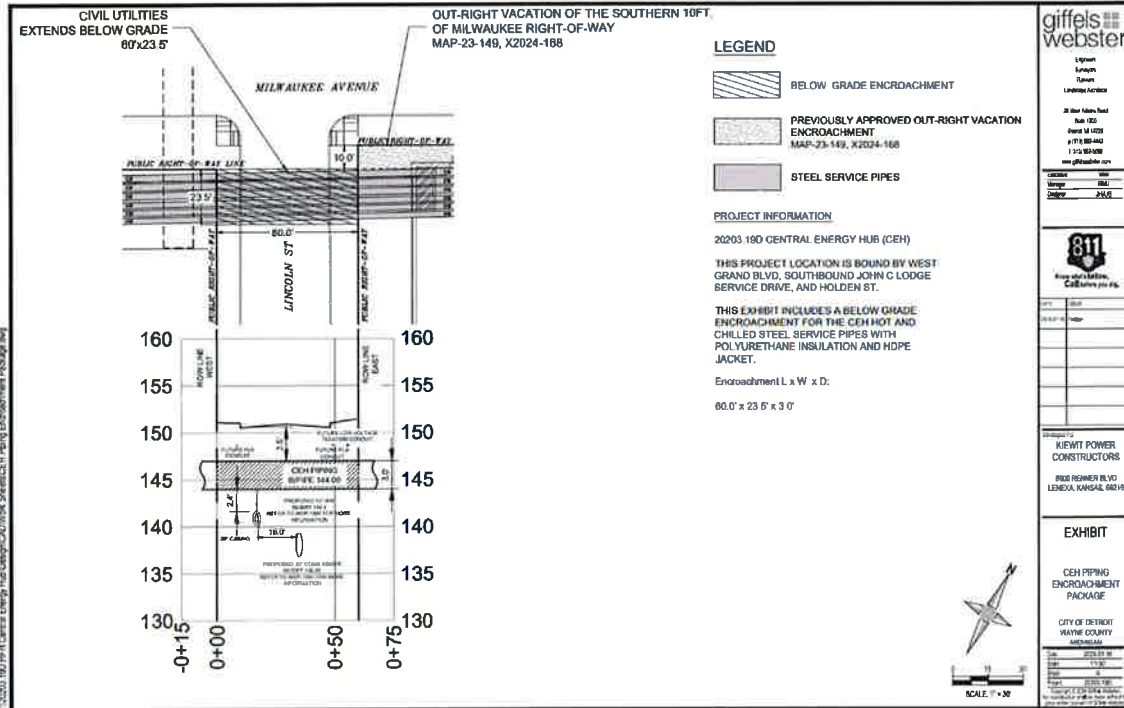
COLEMAN A. YOUNG MUNICIPAL CENTER
2 WOODWARD AVE. SUITE 601
DETROIT, MICHIGAN 48226
PHONE: (313) 224-3949 TTY: 711
WWW.DETROITMI.GOV





CITY OF DETROIT
DEPARTMENT OF PUBLIC WORKS
CITY ENGINEERING DIVISION

COLEMAN A. YOUNG MUNICIPAL CENTER
2 WOODWARD AVE. SUITE 601
DETROIT, MICHIGAN 48226
PHONE: (313) 224-3949 TTY: 711
WWW.DETROITMI.GOV





**COLEMAN A. YOUNG MUNICIPAL CENTER
2 WOODWARD AVE. SUITE 601
DETROIT, MICHIGAN 48226
PHONE: (313) 224-3949 TTY: 711
WWW.DETROITMI.GOV**

