

Janice M. Winfrey  
City Clerk

**City of Detroit**  
OFFICE OF THE CITY CLERK

Andre P. Gilbert II  
Deputy City Clerk

**DEPARTMENT PETITION REFERENCE COMMUNICATION**

*To: The Department or Commission Listed Below*

*From: Janice M Winfrey, Detroit City Clerk*

---

The following petition is herewith referred to you for report and recommendation to the City Council.

In accordance with that body's directive, kindly return the same with your report in duplicate within four (4) weeks.

---

Petition No.	2025-032
Name of Petitioner	Henry Ford Health System
Description of Petition	Petition to request several encroachments into W. Grand Blvd. for the installation of directional and regulatory signs for Henry Ford Health System.
Type of Petition	<b>Alley Vacation/Encroachment/Utility Vacation</b>
Submission Date	02/26/25
Concerned Departments	Media Services, Building & Safety Engineering, Police Department, Fire Department, Municipal Parking Department, Transportation Department, Health Department, General Services Department
Petitioner Contact	Kevin Deters Metro Signs & Lighting 11444 Kaltz Ave. Warren, MI 48089 (P): (586) 759-2700 <a href="mailto:kdeters@metrodetroitsigns.com">kdeters@metrodetroitsigns.com</a>



**CITY OF DETROIT  
DEPARTMENT OF PUBLIC WORKS  
CITY ENGINEERING DIVISION**

**COLEMAN A. YOUNG MUNICIPAL CENTER  
2 WOODWARD AVE. SUITE 601  
DETROIT, MICHIGAN 48226  
PHONE: (313) 224-3949 TTY: 711  
WWW.DETROITMI.GOV**

---

To: Clerk's Office  
From: The Department of Public Works  
City Engineering Division  
MapsandRecordsBureau@DetroitMI.Gov  
(313) 224-3970

Petitioner:  
Henry Ford Health System  
1 Ford Place  
Detroit, MI 48202

On behalf of the above-mentioned petitioner the Department of Public Works: City Engineering Division is submitting a petition request for the below mentioned action. The petitioner has received a project consultation from the Department of Public Works: City Engineering Division and has been advised the following:

Type of action recommended:

Petition to request several encroachments into W. Grand Blvd. for the installation of directional and regulatory signs for Henry Ford Health System.

Georgine Gersdorff  
Manager II  
Department of Public Works  
City Engineering Division  
313-224-3985



CITY OF DETROIT  
DEPARTMENT OF PUBLIC WORKS  
CITY ENGINEERING DIVISION

COLEMAN A. YOUNG MUNICIPAL CENTER  
2 WOODWARD AVE. SUITE 601  
DETROIT, MICHIGAN 48226  
PHONE: (313) 224-3949 TTY: 711  
WWW.DETROITMI.GOV



11444 Kaltz Ave. Warren, MI 48089  
P: (586)759-2700 F: (586)759-2703  
[kdeters@metrodetroitsigns.com](mailto:kdeters@metrodetroitsigns.com)

DATE: 12/11/24  
TO: City of Detroit Encroachment  
FROM: Kevin Deters  
Metro Detroit Signs  
RE: Henry Ford Health – 2799 W Grand Blvd

Cover Letter

Hello,

The sign permits are approved for Henry Ford Health, but we were instructed to get encroachment approval for the following six signs:

- E02 - SGN2024-00311 – Emergency Entrance panel sign
- E59 - SGN2024-00279 – Main Entrance directional sign
- E58 – SGN2024-00278 – Emergency directional sign
- E195 – SGN2024-00303 – face change on parking panels
- E197 – SGN2024-00304 – Outpatient Entrance cabinet sign
- E198 – SGN2024-00305 – Outpatient Clinic directional sign

The drawings for the signs are attached with the encroachment application.

Feel free to call me at (586)759-2700 if anything else is needed. Thank you for your assistance.

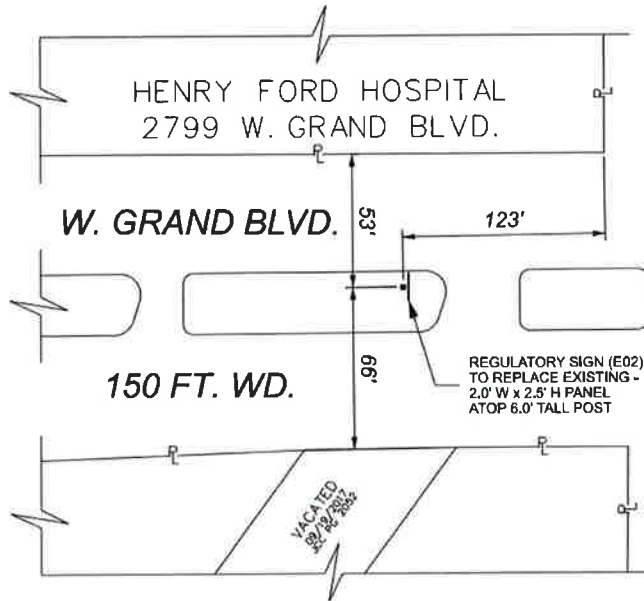
*Kevin Deters* 12-11-24



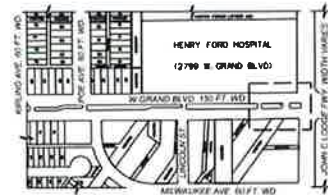
CITY OF DETROIT  
DEPARTMENT OF PUBLIC WORKS  
CITY ENGINEERING DIVISION

COLEMAN A. YOUNG MUNICIPAL CENTER  
2 WOODWARD AVE. SUITE 601  
DETROIT, MICHIGAN 48226  
PHONE: (313) 224-3949 TTY: 711  
WWW.DETROITMI.GOV

MAP-24-179



JOHN C. LODGE SERVICE DR.



REQUEST ENCROACHMENT  
(NEW SIGNAGE, 0.0' TO 6.0' ABOVE GRADE)

(FOR OFFICE USE ONLY)

CARTO 31 C & 31 D

B					
A					
REVISIONS					
DESIGN BY	TS	CHECKED	AP/LC	DATE	
DATE	12-20-2024	APPROVED	GE		

REQUEST ENCROACHMENTS INTO  
W. GRAND BLVD, 150 FT. WD.,  
AT 2799 W. GRAND BLVD.

CITY OF DETROIT  
CITY ENGINEERING DIVISION  
SURVEY BUREAU

JOB NO. 24-179

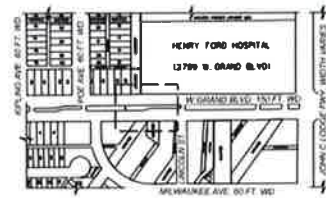
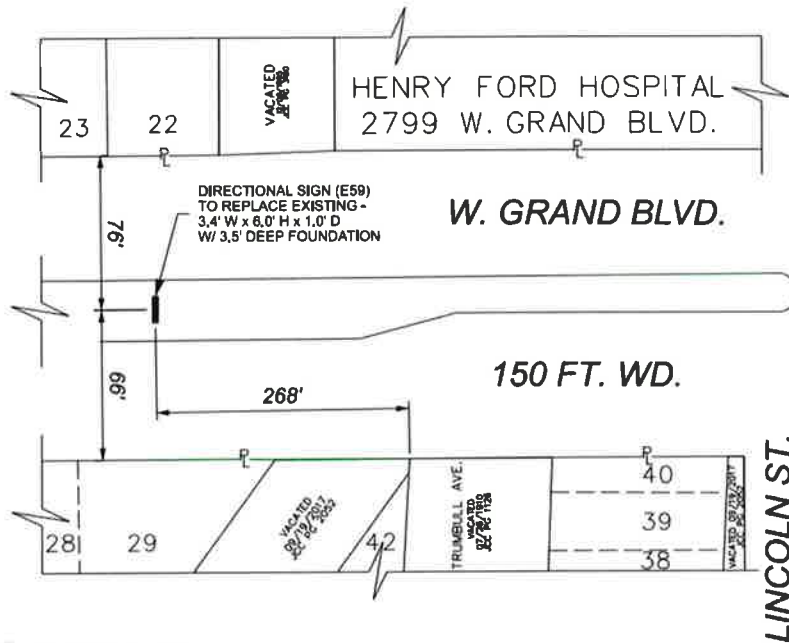
DRWG. NO. 01



CITY OF DETROIT  
DEPARTMENT OF PUBLIC WORKS  
CITY ENGINEERING DIVISION

COLEMAN A. YOUNG MUNICIPAL CENTER  
2 WOODWARD AVE. SUITE 601  
DETROIT, MICHIGAN 48226  
PHONE: (313) 224-3949 TTY: 711  
WWW.DETROITMI.GOV

MAP-24-179



- REQUEST ENCROACHMENT  
(NEW SIGNAGE, -3.5' TO 6.0' ABOVE GRADE)

(FOR OFFICE USE ONLY)

CARTO 31 C & 31 D

B				
A				
DESCRIPTION	REV	CHK	APP	DATE
DRAWN BY	TS	CHKD BY	AP/LC	
DATE	02-19-2025	APPROVED	GE	

REQUEST ENCROACHMENTS INTO  
W. GRAND BLVD, 150 FT. WD.,  
AT 2799 W. GRAND BLVD.

CITY OF DETROIT  
CITY ENGINEERING DIVISION  
SURVEY BUREAU

JOB NO. 24-179

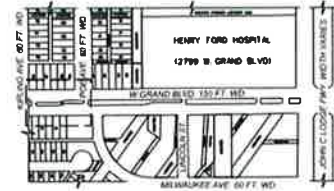
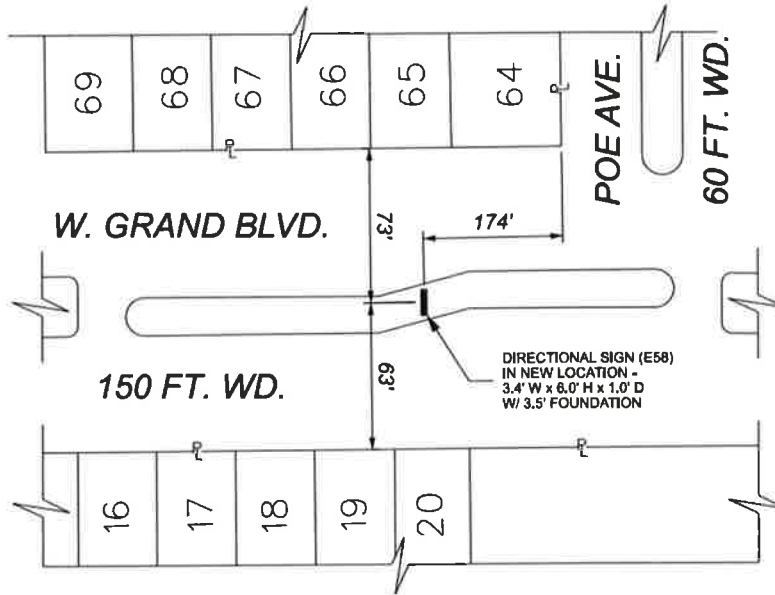
DRWG. NO. 02



CITY OF DETROIT  
DEPARTMENT OF PUBLIC WORKS  
CITY ENGINEERING DIVISION

COLEMAN A. YOUNG MUNICIPAL CENTER  
2 WOODWARD AVE. SUITE 601  
DETROIT, MICHIGAN 48226  
PHONE: (313) 224-3949 TTY: 711  
WWW.DETROITMI.GOV

MAP-24-179



- REQUEST ENCROACHMENT  
(NEW SIGNAGE, -3.5' TO 6.0' ABOVE GRADE)

(FOR OFFICE USE ONLY)

CARTO 31 C & 31 D

B					
A					
REVISIONS					
REASON BY	TS	DESIGNED	AP/LC		
DATE	12-20-2024	APPROVED	GE		

REQUEST ENCROACHMENTS INTO  
W. GRAND BLVD, 150 FT. WD.,  
AT 2799 W. GRAND BLVD.

CITY OF DETROIT  
CITY ENGINEERING DIVISION  
SURVEY BUREAU

JOB NO. 24-179

DRWG. NO. 03





**COLEMAN A. YOUNG MUNICIPAL CENTER**  
**2 WOODWARD AVE. SUITE 601**  
**DETROIT, MICHIGAN 48226**  
**PHONE: (313) 224-3949 TTY: 711**  
**WWW.DETROITMI.GOV**

[illegible]





**CITY OF DETROIT**  
**DEPARTMENT OF PUBLIC WORKS**  
**CITY ENGINEERING DIVISION**

**COLEMAN A. YOUNG MUNICIPAL CENTER**  
**2 WOODWARD AVE. SUITE 601**  
**DETROIT, MICHIGAN 48226**  
**PHONE: (313) 224-3949 TTY: 711**  
**WWW.DETROITMI.GOV**

