

CONTROL POINTS			
Pt. No.	Northing	Easting	Elev.
1	302532.43	13469719.34	594.04
2	302807.82	13469875.70	594.73
3	302861.05	13470011.11	595.17
4	302779.39	13470158.58	594.98

HORIZONTAL DATUM: MICHIGAN STATE PLANE COORDINATE SYSTEM, SOUTH ZONE 2113, INTERNATIONAL FEET, NAD 83, 2011 ADJUSTMENT YEAR
VERTICAL DATUM: NAVD 1988 (BASED ON GPS OBSERVATION REFERENCED TO MSRN NETWORK)

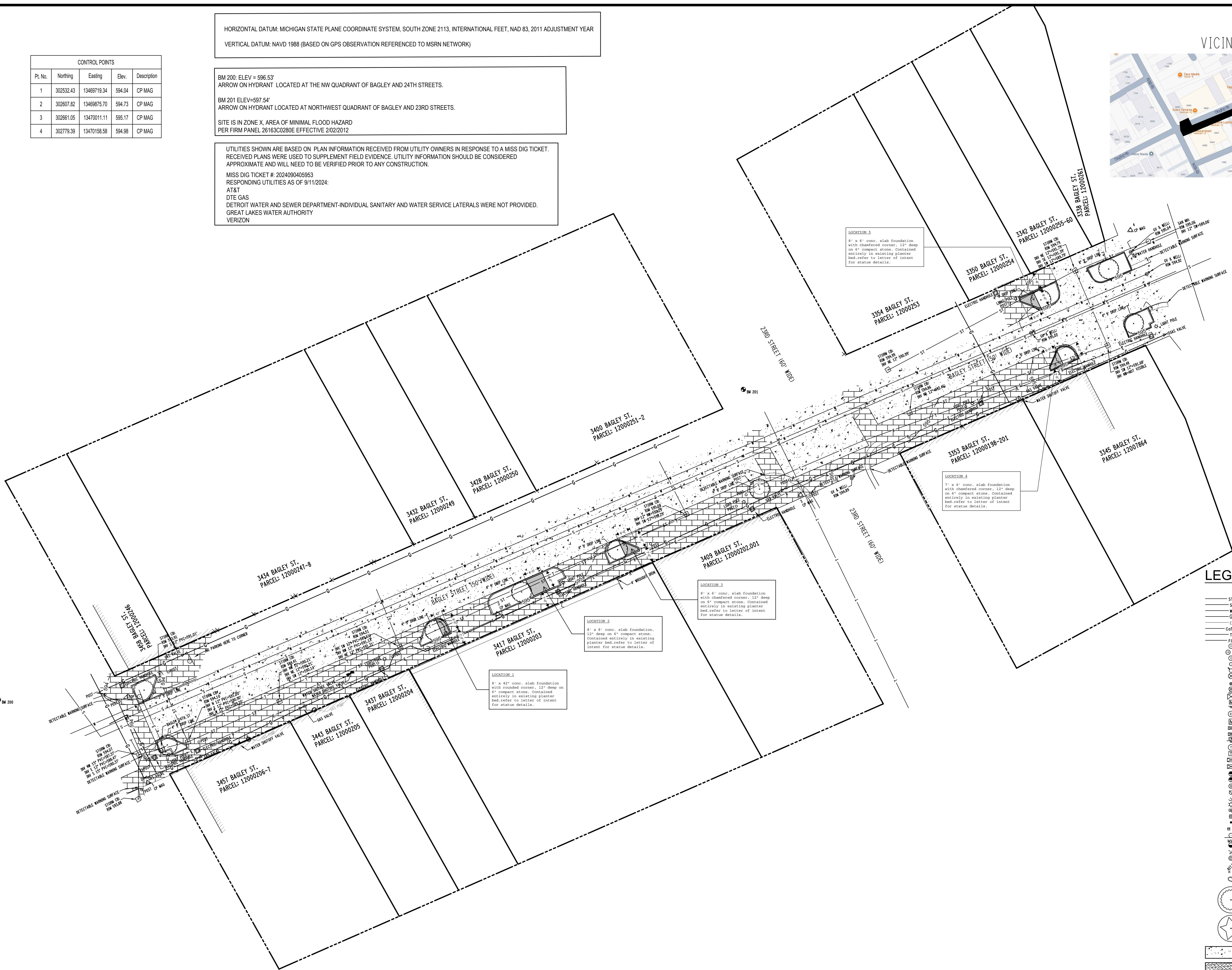
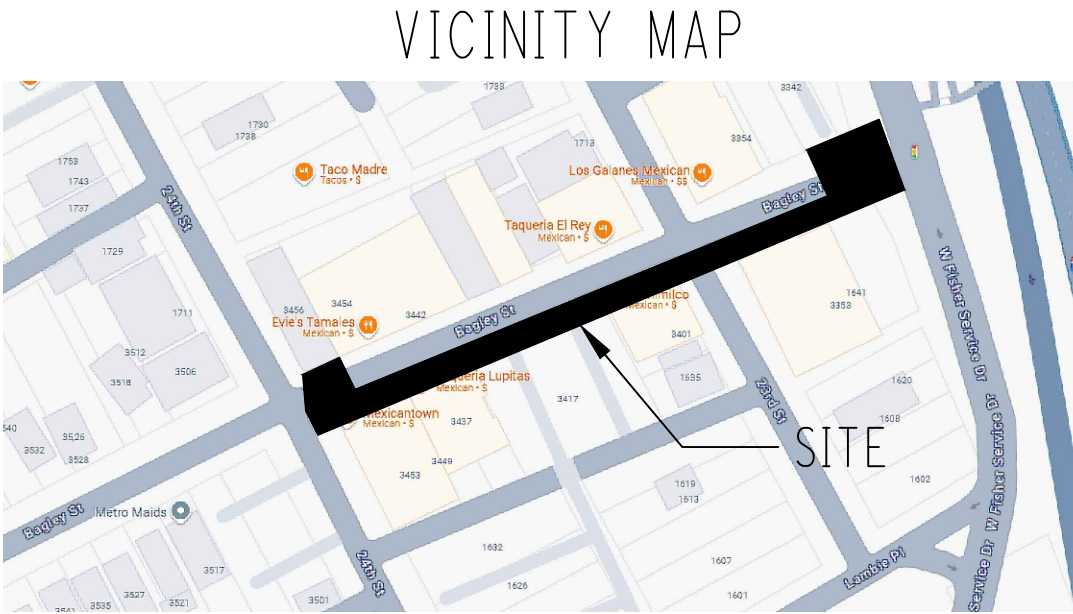
BM 200: ELEV = 596.53'
ARROW ON HYDRANT LOCATED AT THE NW QUADRANT OF BAGLEY AND 24TH STREETS.

BM 201 ELEV=597.54'
ARROW ON HYDRANT LOCATED AT NORTHWEST QUADRANT OF BAGLEY AND 23RD STREETS.

SITE IS IN ZONE X, AREA OF MINIMAL FLOOD HAZARD
PER FIRM PANEL 26163C0280E EFFECTIVE 2/02/2012

UTILITIES SHOWN ARE BASED ON PLAN INFORMATION RECEIVED FROM UTILITY OWNERS IN RESPONSE TO A MISS DIG TICKET. RECEIVED PLANS WERE USED TO SUPPLEMENT FIELD EVIDENCE. UTILITY INFORMATION SHOULD BE CONSIDERED APPROXIMATE AND WILL NEED TO BE VERIFIED PRIOR TO ANY CONSTRUCTION.

MISS DIG TICKET #: 2024090405953
RESPONDING UTILITIES AS OF 9/11/2024:
AT&T
DTE GAS
DETROIT WATER AND SEWER DEPARTMENT-INDIVIDUAL SANITARY AND WATER SERVICE LATERALS WERE NOT PROVIDED.
GREAT LAKES WATER AUTHORITY
VERIZON



LEGEND

- EXISTING
- ST STORM SEWER
 - S SANITARY SEWER
 - W WATER MAIN
 - G GAS MAIN
 - U UNDERGROUND ELECTRIC
 - CoTV UNDERGROUND CABLE
 - T UNDERGROUND TELEPHONE/CONDUIT
 - F UNDERGROUND FIBER OPTIC
 - SM STORM MANHOLE
 - CB CATCH BASIN
 - SMH SANITARY MANHOLE
 - CO CLEAN OUT
 - FD FIRE HYDRANT
 - GV GATE VALVE & WELL
 - FW FIRE HYDRANT VALVE
 - WS WATER SERVICE - SHUT OFF
 - GV GAS VALVE
 - GM GAS METER
 - GMK GAS MARKER
 - EMH ELECTRIC MANHOLE
 - EM ELECTRIC METER
 - UEB U/G ELECTRIC BOX
 - EOU ELECTRIC OUTLET
 - EMR ELECTRIC MARKER
 - TMH TELEPHONE MANHOLE
 - TP TELEPHONE PEDISTAL
 - UTB U/G CABLE TV BOX
 - SV SPRINKLER VALVE
 - SH SPRINKLER HEAD
 - W WELL
 - UP UTILITY POLE
 - GA GUY ANCHOR
 - LP LIGHT POLE
 - GP GUARD POST
 - P POST
 - CFP CONCRETE FILLED POST
 - M MAILBOX
 - S SIGN
 - MW MONITORING WELL
 - FIR FOUND IRON/RE-ROD/PIPE
 - FM FOUND MONUMENT
 - ET ELEVATION TAKEN HERE
 - B BUSH
 - DT DECIDUOUS TREE w/ DRIPLINE
 - CT CONIFEROUS TREE w/ DRIPLINE
- EX. CONCRETE
- EX. GRAVEL
- EX. BITUMINOUS PAVEMENT
- EX. BRICK PAVEMENT

Know what's below
Call before you dig
MISS DIG 888, 888, 888
1-800-482-7171 www.missdig.net

811 3 FULL WORKING DAYS
BEFORE YOU DIG CALL

WARNING

UTILITY LOCATIONS ARE NOT CONFIRMED. THOSE SHOWN WERE OBTAINED FROM UTILITY OWNERS OR PLANS. CONTRACTORS SHALL VERIFY PRIOR TO BEGINNING WORK. THE CONTRACTOR SHALL NOTIFY UTILITY OWNERS TO HAVE WORK AREA STAKED AND RELOCATED AS NOTED IN THE SPECIFICATIONS. ALL UTILITIES THERE WITH INTERFERE WITH CONSTRUCTION.

Infrastructure Engineering Inc.
3331 West Street Name
City, Michigan 48zip

Bagley Street
Topographic Survey
Bagley Street
Detroit, MI

DLZ

ARCHITECTURE • ENGINEERING • PLANNING
SURVEYING • CONSTRUCTION SERVICES

INNOVATIVE IDEAS
EXCEPTIONAL DESIGN
UNMATCHED CLIENT SERVICE

DRAWN BY: DRW
DESIGN BY: -
CHECKED BY: -

DLZ JOB NUMBER: 2442780701

SHEET NO.

1 OF 1