

Janice M. Winfrey
City Clerk

City of Detroit
OFFICE OF THE CITY CLERK

Andre P. Gilbert II
Deputy City Clerk

DEPARTMENT PETITION REFERENCE COMMUNICATION

To: The Department or Commission Listed Below

From: Janice M Winfrey, Detroit City Clerk

The following petition is herewith referred to you for report and recommendation to the City Council.

In accordance with that body's directive, kindly return the same with your report in duplicate within four (4) weeks.

Petition No.	2025-002
Name of Petitioner	411 Piquette, LLC
Description of Petition	Petition to request encroachment into the Piquette St. and Brush St. for the installation of an on-site advertising blade sign.
Type of Petition	Alley Vacation/Encroachment/Utility Vacation
Submission Date	01/06/25
Concerned Departments	Media Services, Building & Safety Engineering, Police Department, Fire Department, Municipal Parking Department, Transportation Department, Health Department, General Services Department
Petitioner Contact	411 Piquette, LLC 2937 E Grand Blvd. Detroit, MI 48202 P: (586) 759-2700



**CITY OF DETROIT
DEPARTMENT OF PUBLIC WORKS
CITY ENGINEERING DIVISION**

**COLEMAN A. YOUNG MUNICIPAL CENTER
2 WOODWARD AVE. SUITE 601
DETROIT, MICHIGAN 48226
PHONE: (313) 224-3949 TTY: 711
WWW.DETROITMI.GOV**

To: Clerk's Office
From: The Department of Public Works
City Engineering Division
MapsandRecordsBureau@DetroitMI.Gov
(313) 224-3970

Petitioner:
411 Piquette, LLC
2937 E Grand Blvd.
Detroit, MI 48202

On behalf of the above-mentioned petitioner the Department of Public Works: City Engineering Division is submitting a petition request for the below mentioned action. The petitioner has received a project consultation from the Department of Public Works: City Engineering Division and has been advised the following:

Type of action recommended:

Petition to request encroachment into the Piquette St. and Brush St. for the installation of an on-site advertising blade sign.

Georgine Gersdorff
Manager II
Department of Public Works
City Engineering Division
313-224-3985



**CITY OF DETROIT
DEPARTMENT OF PUBLIC WORKS
CITY ENGINEERING DIVISION**

**COLEMAN A. YOUNG MUNICIPAL CENTER
2 WOODWARD AVE. SUITE 601
DETROIT, MICHIGAN 48226
PHONE: (313) 224-3949 TTY: 711
WWW.DETROITMI.GOV**



DATE: 11/26/24
TO: City of Detroit Encroachment
FROM: Kevin Deters
Metro Detroit Signs
RE: Projecting sign for Piquette Flats at 411 Piquette
SGN2024-00140

Hello,

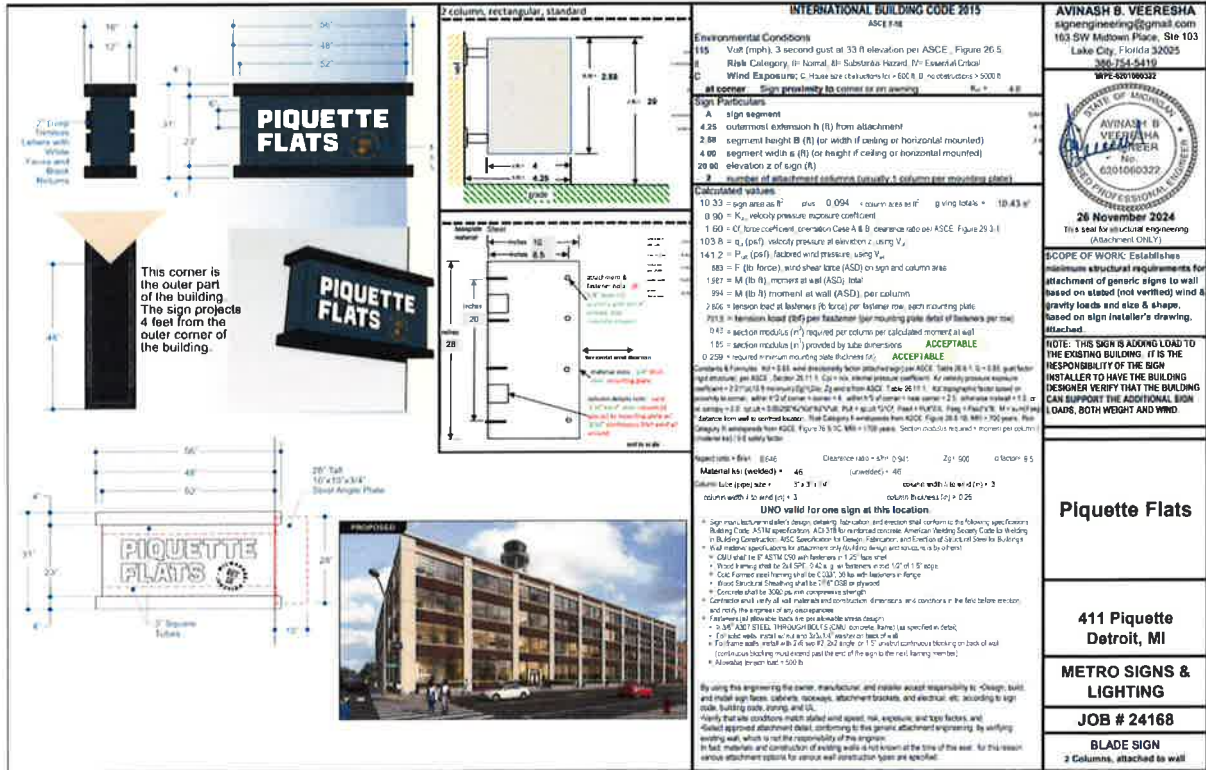
We are applying for an encroachment for an internally illuminated projecting sign on the southwest corner of the building. The sign projects 4 feet from the corner of the building. I have attached the site plan and a sealed drawing from an engineer for the sign.

Feel free to call me at (586)759-2700 if anything else is needed. Thank you for your assistance.



CITY OF DETROIT
DEPARTMENT OF PUBLIC WORKS
CITY ENGINEERING DIVISION

COLEMAN A. YOUNG MUNICIPAL CENTER
2 WOODWARD AVE. SUITE 601
DETROIT, MICHIGAN 48226
PHONE: (313) 224-3949 TTY: 711
WWW.DETROITMI.GOV





CITY OF DETROIT
DEPARTMENT OF PUBLIC WORKS
CITY ENGINEERING DIVISION

COLEMAN A. YOUNG MUNICIPAL CENTER
2 WOODWARD AVE. SUITE 601
DETROIT, MICHIGAN 48226
PHONE: (313) 224-3949 TTY: 711
WWW.DETROITMI.GOV

MAP-24-171

TROMBLY ST. 60 FT. WD.

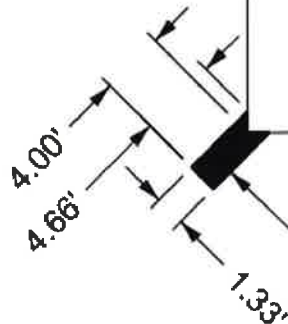
VACATED
10/6/1941 JCC PG 2908



BRUSH ST. 60 FT. WD.

BEAUBIEN ST. 60 FT. WD.

4



PIQUETTE ST. 80 FT. WD.

NEW BLADE SIGN
4.66' X 2.58' X 1.33'
17.42' TO 20' ABOVE GRADE



- REQUEST ENCROACHMENT
(For New Blade Sign)

(FOR OFFICE USE ONLY)

CARTO 31 F

B					
A					
DESCRIPTION					
REVISION					
DRAWN BY	AP	CHECKED	TS / LC		
DATE	12-02-2024	APPROVED	GE		

REQUEST ENCROACHMENT
INTO PIQUETTE ST. AND BRUSH ST.
AT 411 PIQUETTE ST.

CITY OF DETROIT
CITY ENGINEERING DIVISION
SURVEY BUREAU

JOB NO. 24-171

DRWG. NO.